

THIS MESSAGE HAS BEEN BROUGHT TO YOU BY THESE COMMUNITY MINDED BUSINESSES.

Reply to Flanders Fields

by John McCrae

Oh! sleep in peace where poppies grow;
The torch your falling hands let go
Was caught by us, again held high,
A beacon light in Flanders sky
That dims the stars to those below.
You are our dead, you held the foe,
And ere the poppies cease to blow,
We'll prove our faith in you who lie
In Flanders Fields.

Oh! rest in peace, we quickly go
To you who bravely died, and know
In other fields was heard the cry,
For freedom's cause, of you who lie,
So still asleep where poppies grow,
In Flanders Fields.

Thanks to your generosity during the 2013 Poppy Campaign, the following donations were made:

Balance remaining from 2012 campaign	\$23,691
Raised during 2013 campaign (Oct 2013- Sep 2014)	\$71,457
Total	\$95,148
Expenses including purchase of poppies, poppy boxes, wreaths, advertising, audit Disbursements	\$21,612
Veteran's comforts and assistance	\$5,060
Milton District Hospital	\$15,000
District and Provincial Poppy Funds	\$5,000
District B charitable fund	\$5,000
District B Hospital Fund	\$5,000
Provincial Bursary Fund	\$5,000
Ontario Command Leave the Streets Behind Campaign	\$5,000
Royal Commonwealth Ex-Services League - Carribean Fund	\$3,500
Total	\$48,560
Balance remaining end of 2013 campaign	\$24,976

Wreaths are available
through the Legion for
display in store windows
or reception areas of
businesses.
Phone 905-878-9005
to place an order.

Thank you for supporting the Poppy Campaign.
Visit our website: rcl136.com

HE LIVES NOT IN HEAVEN ALONE BUT IN HEARTS
TO WHICH HIS MEMORY IS A PRESENCE

Take Time To

REMEMBER

Legion 
**THE ROYAL
CANADIAN LEGION**

the Canadian
Champion

Serving the Community
Since 1860

555 Industrial Dr.,
Milton 905-878-2341

Favourite Painter

Favourite Renovator

Specializing in
REPAIRS & RENOVATIONS
to your home or workplace

Handymen Enterprises

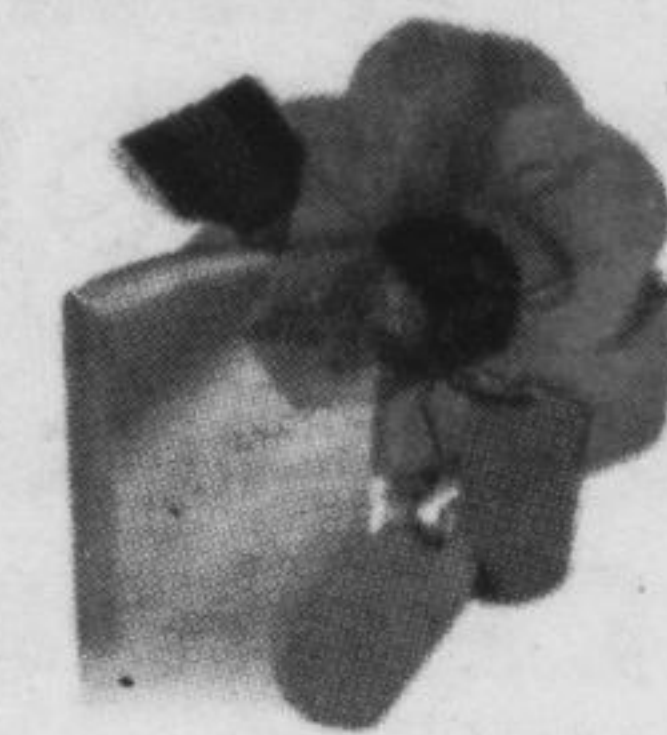
ENJOY A CHANGE,
HOME IMPROVEMENT OR PREP TO SELL

- Bathrooms
- Basements
- Home Offices
- Kitchens
- Decks
- Tiling
- Odd Jobs
- You make the list....

CALL JIM
905-878-8751
Fully insured References available


J. SCOTT EARLY
Funeral Home, Inc.

21 James Street, Milton
earlyfuneralhome@cogeco.net



Lest We Forget
(905) 878-2669 &



Birkdale Place

SENIORS COMMUNITY

Celebrate life with us

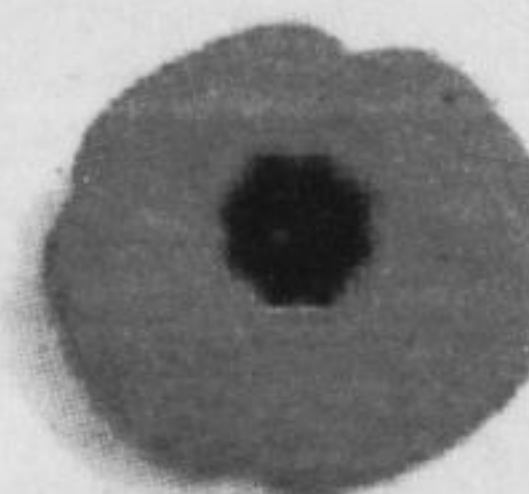
We remember.....

611 Farmstead Dr., Milton • 905-636-6300
www.birkdaleplace.com

**Katherine
Barnett**
BROKER

RE/MAX REALTY SPECIALISTS INC., BROKERAGE
Each office independently owned & operated.

katherine@katherinebarnett.com
O 905-858-3434
C 416-856-5161
F 905-858-2682



MILTON CHAMBER OF COMMERCE

SUPPORTING LOCAL BUSINESS SINCE 1888

251 Main St. E, Suite 104 • 905-878-0581 • www.miltonchamber.ca



**DISABILITY
TAX SOLUTIONS**

Debbie Wilson
Founder

647-241-7020
Info@DisabilityTaxSolutions.ca
www.DisabilityTaxSolutions.ca

4145 North Service Rd., 2nd Floor
Burlington, ON Canada, L7L 6A3



At Disability
Tax Solutions

We Focus on
One Thing

Disability
Tax Credits
for YOU!

CREATIVE MEMORIALS LIMITED



Serving Milton & the
community for 61 years

Now in our 3rd generation

190 Ontario St. S., Milton 905-878-6522

"WE REMEMBER"