



Check out some of the reasons why Nissan is  
**THE FASTEST GROWING  
 AUTOMOTIVE BRAND IN CANADA**  
 Over the last 12 months in the non-luxury segment.\*

# 2014 NISSAN CLEAROUT

**0%** APR FINANCING FOR UP TO  
**84** MOS ON SELECT MODELS OR UP TO  
**\$13,000** IN CASH DISCOUNTS ON VIRTUALLY ALL TITAN MODELS



Platinum model shown\*

## 2014 NISSAN PATHFINDER

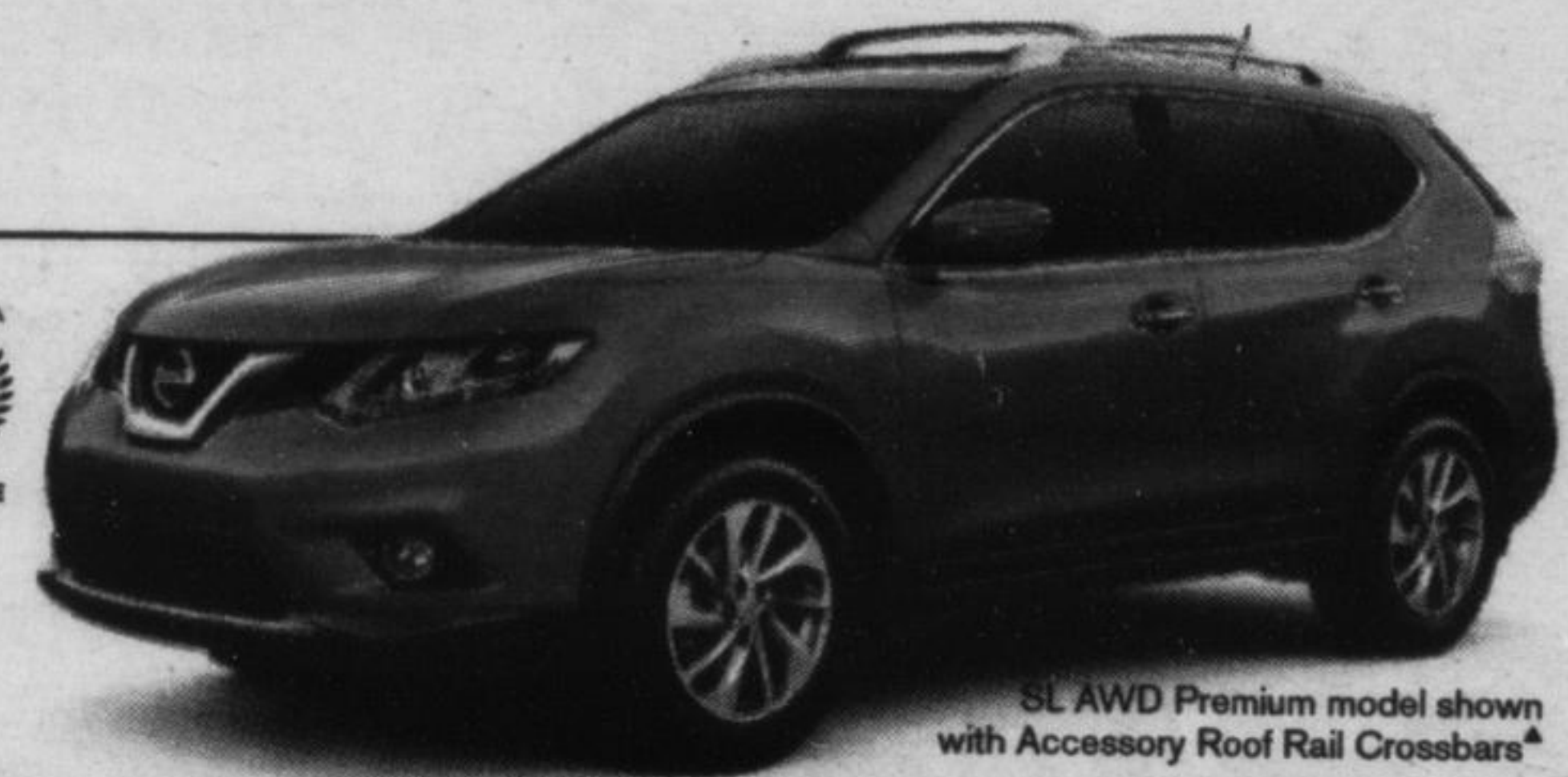
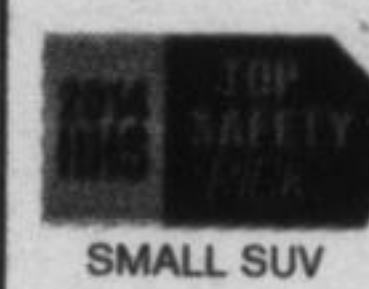
FINANCING **0.9%** APR FREIGHT AND FEES INCLUDED OR UP TO **\$4,500** CASH DISCOUNT ON PATHFINDER HYBRID MODELS  
 FOR 60 MONTHS ON PATHFINDER S, CVT 4X2

- BEST-IN-CLASS FUEL ECONOMY\*
- BEST-IN-CLASS INTERIOR PASSENGER VOLUME\*

## 2014 ALL-NEW NISSAN ROGUE

FINANCING **0.9%** APR FREIGHT AND FEES INCLUDED OR UP TO **\$2,000** CASH DISCOUNT ON MOST MODELS  
 FOR 60 MONTHS ON ALL ROGUE MODELS

- STANDARD FEATURES INCLUDE:
- BETTER FUEL ECONOMY (HWY) THAN ESCAPE, RAV4 AND CR-V\*
  - AVAILABLE INTUITIVE ALL-WHEEL DRIVE



SL AWD Premium model shown with Accessory Roof Rail Crossbars\*

## 2014 NISSAN TITAN

FINANCING **0%** APR PLUS UP TO **\$6,000** OR UP TO **\$13,000** IN CASH DISCOUNT ON TITAN KING CAB SV, 4X4, SWB IN CASH DISCOUNT ON VIRTUALLY ALL TITAN MODELS

- 5.6L DOHC V8 ENGINE WITH 317-HP & 385 LB-FT TORQUE
- UP TO 9,500 LBS TOWING CAPABILITY



Crew Cab SL model shown\*

**HURRY, OFFERS END SEPTEMBER 30<sup>TH</sup>** FIND YOUR ADVANTAGE AT [CHOOSENISSAN.CA](http://CHOOSENISSAN.CA) OR YOUR LOCAL RETAILER

\*Get \$6,000 stackable cash discount on the purchase of a 2014 KC, SV 4X4 SWB (3KCG74 AA00). The cash discount is based on stackable trading dollars when registered and delivered between Sept. 3-30, 2014 with sub-vented finance rates only. The cash discount will be deducted from the negotiated selling price before taxes. This offer cannot be combined with any other offer. Conditions apply.  
 \*\*CASH DISCOUNT: Get \$4,500/\$2,000/\$13,000 non-stackable cash discount applicable on the lease or finance through NCF with standard rates of select 2014 Pathfinder models [SV Hybrid (5XCH14 AA00)/Platinum Premium Hybrid (5XE14 AA00)]/2014 Rogue models [except S FWD CVT, (Y6RG14 AA00)]/2014 Titan models [except KING CAB SV, 4X4, SWB (3KCG74 AA00)]. The cash discount is based on non-stackable trading dollars when registered and delivered between Sept. 3-30, 2014. The cash discount will be deducted from the negotiated selling price before taxes and cannot be combined with special lease or finance rates. This offer cannot be combined with any other offer. Conditions apply. \*Representative finance offer based on a new 2014 Pathfinder S, CVT 4X2 (5XRG14 AA00)/2014 Rogue S FWD CVT (Y6RG14 AA00)/2014 Titan KING CAB S, 4X2, SWB (1KAG74 AA00). Selling Price is \$31,192/\$25,262/\$22,942 financed at 0.9%/0.9%/0% APR equals 130/130/182 bi-weekly payments of \$245/\$199/\$159 for a 60/60/84 month term. \$0/\$0/\$3,000 down payment required. Cost of borrowing is \$718.80/\$576.60/\$0 for a total obligation of \$31,911/\$25,844/\$31,942. \$4,000 non-stackable cash discount included in advertised offer on the 2014 Titan KING CAB S, 4X2, SWB (1KAG74 AA00). This offer cannot be combined with any other offer. Conditions apply. \$500 NF cash included in advertised amount for Pathfinder S, CVT 4X2 (5XRG14 AA00). \*Models shown \$43,792/\$35,362/\$49,992 Selling Price for a new 2014 Pathfinder Platinum V6 CVT 4X4 (5XEG14 NP00)/2014 Rogue SL, AWD CVT (Y6DG14 BK00)/2014 Titan Crew Cab SL 4X4, SWB (3CF674 AA00). \$500/\$0/\$0/\$4,000 Nissan finance cash included in advertised amount. \*Freight and PDE charges (\$1,560/\$1,630/\$1,610), air-conditioning levy (\$100) where applicable, applicable fees (all which may vary by region), manufacturer's rebate and dealer participation where applicable are included. License, registration, insurance and applicable taxes are extra. Lease offers are available on approved credit through Nissan Canada Finance for a limited time, may change without notice and cannot be combined with any other offers except stackable trading dollars. Retailers are free to set individual prices. Dealer order/trade may be necessary. Vehicles and accessories are for illustration purposes only. Offers, prices and features subject to change without notice. Offers valid between Sept. 3-30, 2014. \*Nissan is the fastest growing brand in the non-luxury segment based on comparison of 12-month retail sales from August 2013 to July 2014 of all Canadian automotive brands and 12-month averages sales growth. \*\*Based on 2014 Canadian Residual Value Award in Subcompact Car segment. ALG is the industry benchmark for residual values and depreciation data, www.alg.com. \*All information compiled from third-party sources including manufacturer websites. Not responsible for errors in data on third party websites. 12/17/2013. \*Ward's Large Cross/Utility segment. MY14 Pathfinder vs. 2013 Large Cross/Utility Class. 2014 Pathfinder S 2WD with CVT transmission fuel consumption estimate is 10.5L/100 KM CITY | 7.7L/100 KM HWY | 9.3L/100 KM combined. Actual mileage will vary with driving conditions. Use for comparison purposes only. Based on 2012 EnerGuide Fuel Consumption Guide ratings published by Natural Resources Canada. Government of Canada test methods used. Your actual fuel consumption will vary based on powertrain, driving habits and other factors. 2014 Pathfinder Platinum model shown. \*Ward's Large Cross/Utility Market Segmentation. MY14 Pathfinder vs. 2014 Large Cross/Utility Class. Offers subject to change, continuation or cancellation without notice. Offers have no cash alternative value. See your participating Nissan retailer for complete details. ©1998-2014 Nissan Canada Inc. and Nissan Financial Services Inc. a division of Nissan Canada Inc.

**MILTON NISSAN**  
 585 Steeles Avenue East, Milton, ON  
 Tel: (905) 878-4137