

# ZING INTO SPRING

SALES EVENT

**PULL-AHEAD BONUS CASH \$1,000**

**+1% RATE REDUCTION**  
ENDS APRIL 30<sup>TH</sup>

PULL-AHEAD INTO A NEW VEHICLE SOONER. EXCLUSIVE TO OUR EXISTING FINANCE AND LEASE CUSTOMERS.

## THE ULTIMATE FAMILY VALUE BONUS IS BACK!

### 2014 DODGE GRAND CARAVAN "30TH ANNIVERSARY EDITION"



3.6L V6, 6 SPEED AUTO, 2 ROW STOW'N GO, 3 ZONE AIR CONDITIONING, LEATHER TRIM, U-CONNECT HANDS FREE, DVD, TOUCH SCREEN, ST#286954

**\$28,800** +HST & LIC

**\$161** OR **\$0 DOWN**  
BI-WEEKLY +HST & LIC  
4.29% 84 MOS D.A.C.

### 2014 DODGE JOURNEY "BLACK TOP PACKAGE"



8.4" TOUCH SCREEN, U-CONNECT DVD, TOURING SUSPENSION, 19" GLOSS BLACK ALUMINUM WHEELS, HUMIDITY SENSOR, ST#198047

**\$27,600** +HST & LIC

**\$157** OR **\$0 DOWN**  
BI-WEEKLY +HST & LIC  
4.29% 84 MOS D.A.C.

### 2014 RAM 1500 CREW & QUAD CAB



**\$10,000**  
UP TO  
TOTAL SAVINGS

### ALL NEW 2014 JEEP GRAND CHEROKEE



OVERLAND & SUMMIT MODELS IN STOCK!

**\$2,500**  
LEASE BONUS

## SAVINGS YOU HAVE TO SEE TO BELIEVE!

### 2014 JEEP WRANGLER



**\$3,500**  
FACTORY SAVINGS

### 2014 JEEP COMPASS & 2014 JEEP PATRIOT



**\$2,750**  
FACTORY SAVINGS

### 2013 DODGE DART



STARTING FROM  
**\$15,999**  
PLUS HST & LIC

**0%** FINANCING  
UP TO 36 MONTHS

### 2014 RAM PROMASTER



STARTING FROM  
**\$33,290**  
PLUS HST & LIC



**81 Ontario Street N.**

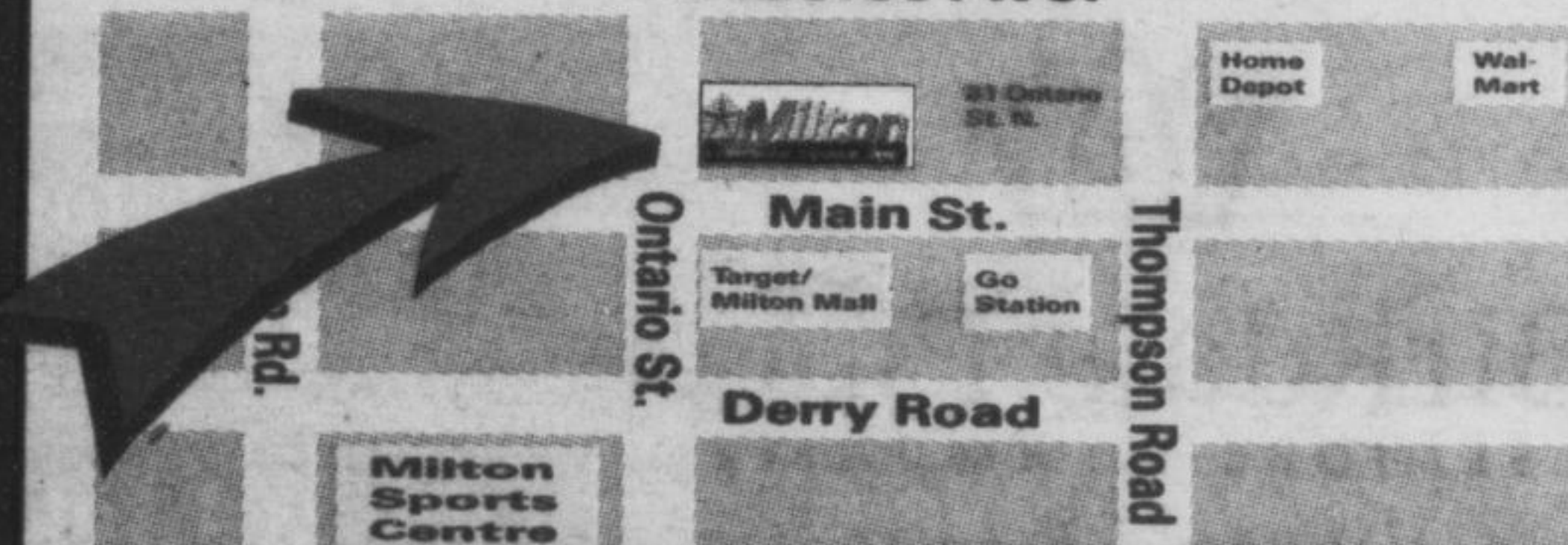
Just North of Target /Milton Mall

[miltonchrysler.com](http://miltonchrysler.com)

**905-878-8877**

Highway 401

Steeles Ave.



\*SAVINGS ARE COMBINED FACTORY DEALER ALLOWANCES AND ZING INTO SPRING SALES EVENT DEALER DISCOUNTS. FINANCE EXAMPLE: \$10,000 FINANCED FOR 0% FOR 60 MONTHS WOULD RESULT IN A MONTHLY PAYMENT OF \$167.67 AND A \$0 COST OF BORROWING. O.A.C. SEE MILTON CHRYSLER FOR DETAILS.