



The Amy
flowers
TEAM

Direct: 905-878-6232
www.AmyFlowersTeam.ca

ROYAL LEPAGE
Meadowtowne Realty, Broker
475 Main St. E. Milton
ON L9T 1R1
Office: 905-878-8101
Fax: 416-981-3559
www.AmyFlowersTeam.ca



FINISHED BASEMENT

4 bedroom Heathwood semi with finished basement and large lot. Hardwood floors, 9' ceilings, granite counters, glass backsplash, freshly painted. Tons of space and natural sunlight. Corner lot provides lots of space. Don't miss out on this one!
\$549,900



OVERSIZED LOT

Backing onto greenspace with a large lot you don't want to miss this amazing 4 bedroom Springridge model from Mattamy. Gorgeous dark hwd floors, finished basement, parking for 2 cars in driveway and so much more. Call us before it's too late!
\$469,900



COUNTRY HOME

Amazing one of a kind property. Original stone farmhouse with all of today's amenities. Huge custom kitchen complete with modern cabinets, granite counters, island, backsplash and so much more. Huge family room is the ideal space for family movie night.
\$859,900



CUSTOM BUILT

Over 4000sqft of luxurious living space. Nothing has been overlooked. From the gorgeous hardwood floors & oak staircase to the granite counters & so much more. All bedrooms have ensuite access. Don't miss out on this rare opportunity.
\$1,099,900



HARDWOOD FLOORS

Popular 43 bedroom Tiffany Cambridge model (1695 sqft) Spacious semi detached features large eat-in area & glass tile. Open concept layout with pot lights & 9' ceilings. Ample space for any family. Call us before it's too late!
\$459,900



QUIET STREET

3 bedroom semi located in mature neighbourhood of Timberlea. Open concept and fully renovated. Hwd floors, ceramic backsplash, renovated main bath, finished basement and so much more. Huge yard is perfect for any family. Call us today!
\$384,900



STUNNING HOME

Show stopping Mattamy built Juneberry model backs onto ravine. Hwd floors, double sided fireplace, huge master, 2nd floor loft & laundry. nothing has been overlooked you will be impressed with this one!
\$779,900



STUNNING HOME

Beautiful Heathwood built Robindale model (1587 sqft) boasts tons of natural light. Open concept layout with gleaming maple hwd floors. Amazing chef's kitchen w/ granite counters, island & large eat-in area. Call us today!
\$474,900



HOT NEW LISTING

Mattamy's Wyndham corner unit on a quiet street close to schools. Popular layout with sep living/dining room. Hwd floors, granite counters, 2nd fl laundry, professionally landscaped and so much more!
\$659,900



FINISHED BASEMENT

Mattamy's Scottswod model (2235 sqft) with a finished basement. Hardwood floors, granite counters, 9' ceilings, wet bar in bsmt, gas fireplace, main fl mud room and so much more. Don't miss out on this amazing home!
\$659,900

Amy Flowers*, Michelle Merritt**, Neil Maxwell**, Robin Kerwin**

*Broker **Sales Representative

Visit Milton Canadian Champion Real Estate at www.insidehalton.com

SOLD over \$100 Million Again in 2013!!!



AJ Lamba
Broker
TEAM

FREE Detailed Home Evaluation
FREE Home Staging Services
FREE Access to LOWEST Mortgage Rates
CALL ME TODAY!!!



TOP 1%
in
Ontario & GTA

905 502-9944 [24 HRS]
AJLamba.com

Thanks to You... Our Team SOLD 26 Homes in March 2014!



Credit River Flowing Thru Pvt 10 Acre Lot! Brand New 4 Br Home! ID#MC116



Immaculate 5Br Home, Over 3000 Sqft, Oasis Bckyrd, 1/3 Acre Lot! ID#MC038



Never Lived In! Brand New 4 Br Home! Apprx 3000Sqft, Gourmet Kit! ID#MC13



6 Months New! Rare 2 Mstr Bdrms! Gorgeous 4 Br Home on Crt! ID#MC0042



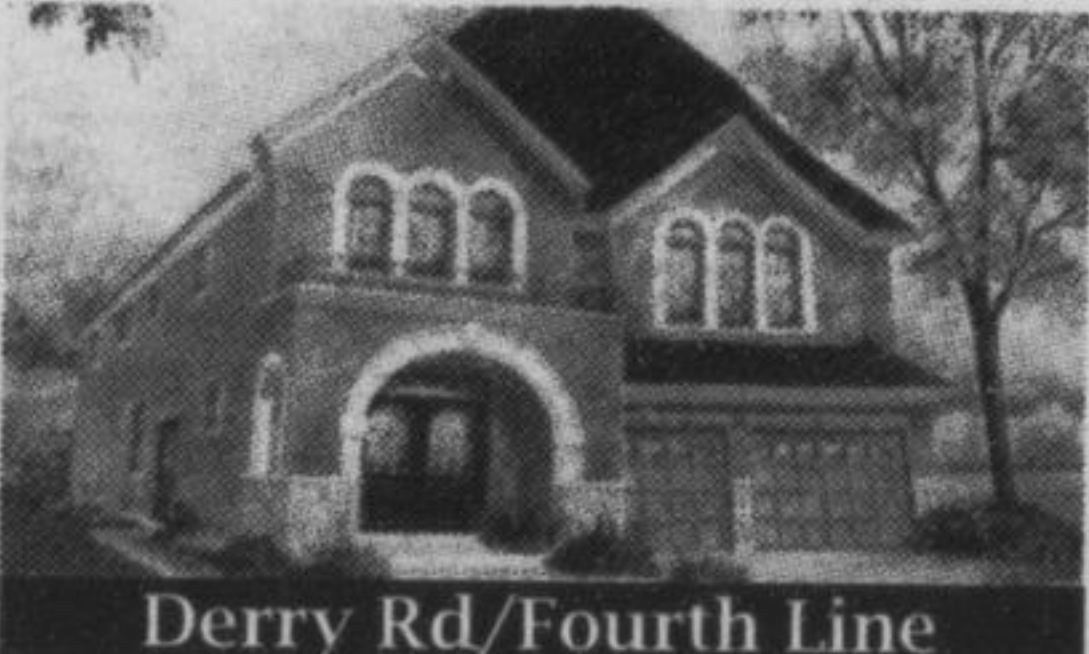
Backs on Credit River! Prestigious 4 Br Home Apx 6300 Sqft Liv Spe! ID#MC16



Luxurious 5+1 Br Home Apx 6500 Sqft Liv Spe! Prof Fin Bsmt! ID#MC0034



15 Years New! Spacious 4 Br Home Apx 3100 Sqft! Upgrd Kit! ID#MC3812



Derry Rd/Fourth Line Brand New 4 Br Home Over 3000 Sqft! Upgd Kit, No Sidewalk! ID#MC0787

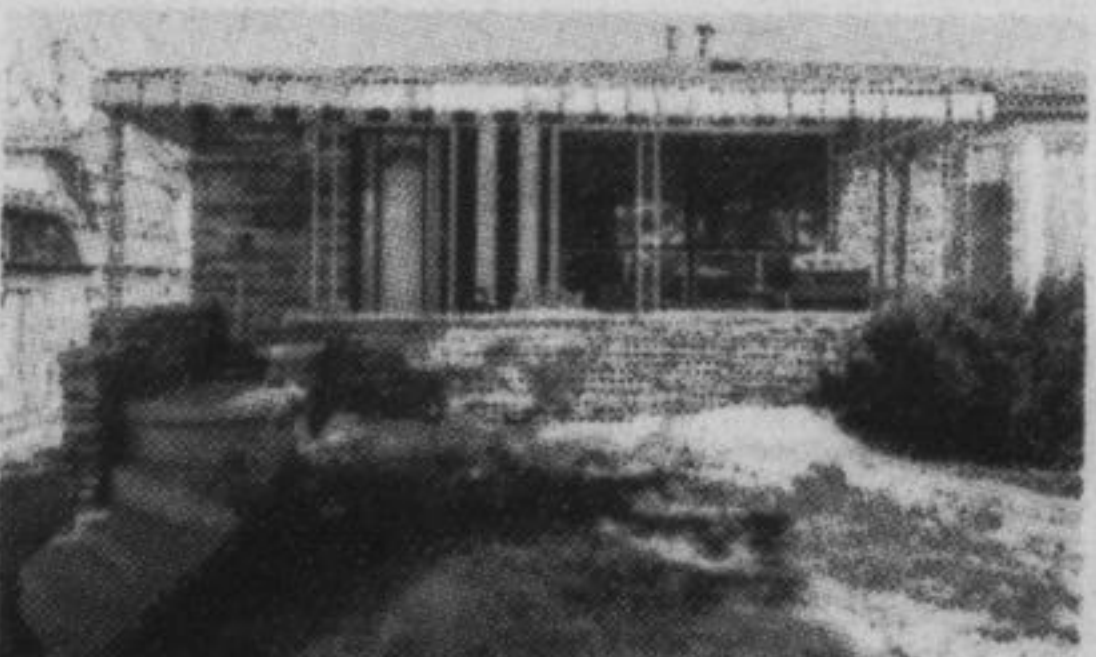
CHOOSE YOUR OWN COMMISSION!
Call to book your **FREE** consultation!
(905) 502-9944 [24 Hrs]
*Some conditions may apply. Ask for details.



Deep Lot! Cozy Home, Upgrd Kit, Steps to Parks, Transit & Schools! ID#MC0079



Derry Rd/Tremaine Rd 2 Years New! Fully Upgrd 4 Br Home! Stunning 12ft Foyer! ID#MC0313



Investment Potential! 3+2 Bdrm Home w/ Bsmt Apt! 6 Car Parking! ID#MC048



Stunning 3 Br Home w/Prof Fin Bsmt! Linked by Garage Only! ID#MC5974



Corner Lot! Upgrd 4 Bdrm 4 Wr Home! Gourmet Kit w/W/O to Yard! \$625,000



Gorgeous 4+2 Bdrm Home w/Prof Fin Bsmt! Over 2500 Sqft! ID#MC4326

AJ Lamba Realty Group Inc., Brokerage

905 502-9944 [24 Hrs] | www.AJLamba.com

#of all salespersons as per MLS