



# HotListings

A COLLECTION OF THE BEST HOMES FOR SALE  
LOCATED IN MILTON AND SURROUNDING AREA

to see more **Hot Listings** in your area visit

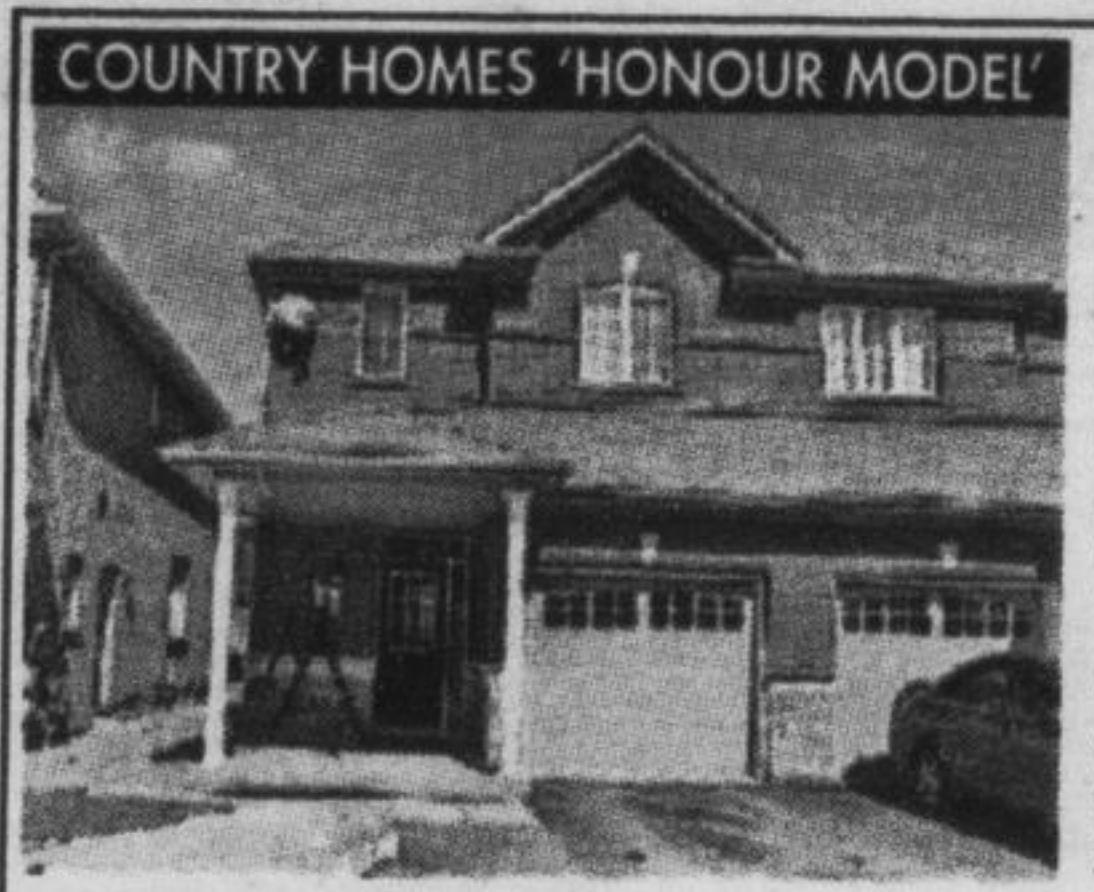


Look for the latest edition of Real Estate at  
[www.insidehalton.com/printeditions](http://www.insidehalton.com/printeditions)  
or to advertise here contact Diane Wolstenholme 905-878-2341, x212  
dianew@miltoncanadianchampion.com



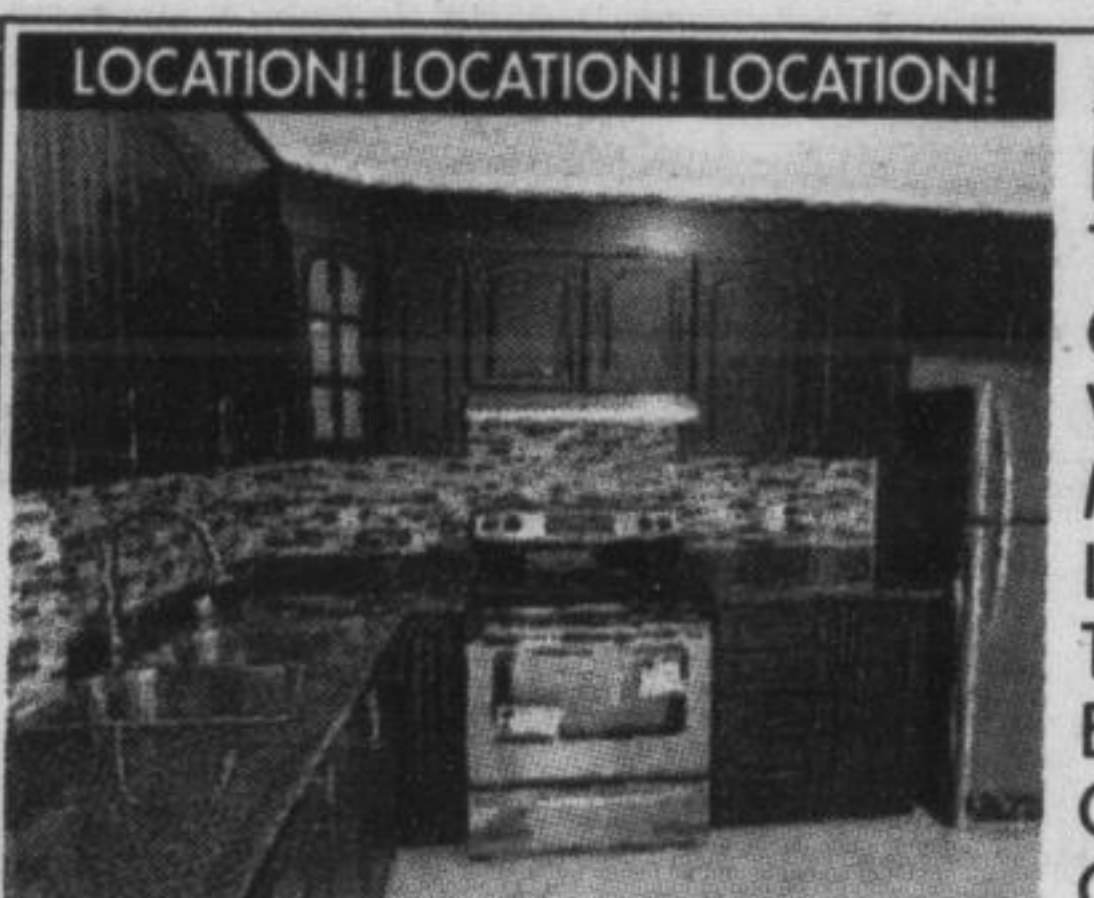
LARGE 1900 SQ FT SEMI

**\$425,000.** One Of The Large 1900 Sq Ft Semi With Hardwood And Ceramic On The Main Floor, Over Sized Master Bedroom With A Walk-In Closet And Ensuite. Close To Schools, Transit, Highways, Shopping Fully Fenced Backyard



COUNTRY HOMES 'HONOUR MODEL'

**\$449,900.** Spectacular Semi Detached Built By Country Homes 'Honour Model' Located In Hawthorne Village. Brings 1670 Sq Ft Total Living Space As Per Builder. 9 Ft Ceilings In Main Floor, 3 Good Size Bedrooms Plus A Recreation Room On Basement. Separate Entrance To Partial Finished Basement. Large Kitchen With Top Of The Line Appliances. Garage Door Entrance. Garage Door Opener. Close To Hwy 401, Schools, Etc.



LOCATION! LOCATION! LOCATION!

**\$315,900.** Fully Renovated At Best Premium Location: New Tiles & Laminate, New Kitchen Cabinets, New Appliances, New Washrooms, New Light Fixtures, Mirror Closet Doors, A Beautiful Looking & Much More, Very Close To Shopping, Public Transit, Shows Excellent Decor With New Paint All Over, A Must See For You And Your Client, Clean And Shows A+++



SUKHRAJ NIJJAR  
Sales Representative

DIRECT: 416-275-4855  
OFFICE: 905-792-7800



HOMELIFE SUPERSTARS  
REAL ESTATE LTD  
Brokerage  
Independently Owned & Operated



889 TRANSOME

**\$469,900**

**MILTON - BRAND NEW TOWNHOME (DERRY/BRONTE)**

Approx 2000 sq ft, brand new never lived in freehold townhome in very convenient area of Milton, on quiet crescent. Dble door entry & big foyer. Prof finished basement by builder. Main flr w/ 9ft ceiling, hardwood & ceramic. Living rm w/ gas fireplace. Lots of windows offer natural sunlight. Dble door to master w/ beautiful, bright ensuite. North Star homes built 'Iris' model ~1994 sq ft. 6 appliances, all ELF's & sep entrance to backyard thru garage! To view, call Sukhraj Nijjar at 416-275-4855.

OPEN HOUSE SAT, APRIL 19 2-4PM • 1233 NEWELL ST.



**WHAT A GEM... SPOTLESS HOME**

Stained Hardwood Floors(2013) 1st Floor. Ceramic Tiles, Stone Gas Fireplace (2013), Granite Countertop, Wainscoting, Decorators Colours, Upgraded Trim 1st floor, Oak Pickets/Railing, Large Ensuite w/Oval Tub, Shower Stall, Open Concept Finished Rec Rm, Fully Fenced Lot, 17x14 ft Exposed Aggregate Patio(2012), "Rubberock" Front Verandah(2013), Backsplash, Close to Schools, Parks, Shopping, Hwy, Rec Centre. A Must See... Move right-in. \$519,900

**NICK A DAMIANO**  
Broker of Record/President



**O - 1-888-999-7797**

**C - 416.258.9794**

nick@venturerealestate.ca  
www.venturerealestate.ca



Location, Location, Location  
Immaculate 2 bedroom 2 bathroom Crossing Condo. Spacious open concept Windsor 11 model. Freshly painted in a neutral palette, espresso cabinetry in kitchen, upgraded SS appliances. Large ensuite off master and turret style second bedroom. Living and dining area boasts gas fireplace. French doors leading to a to a cosy balcony, walk to shopping dining, theatre. Great access to hwy. Shows a 10+. Call Lana for your personal tour. **\$319,900**

Coming Soon

Fantastic home with huge lot on a quiet street in Old Milton. Completely updated 3 brdm, 2 bath, living room dining room, hardwood, butlers pantry, upper level family room, double garage, potential inlaw suite... call Lana for more information.



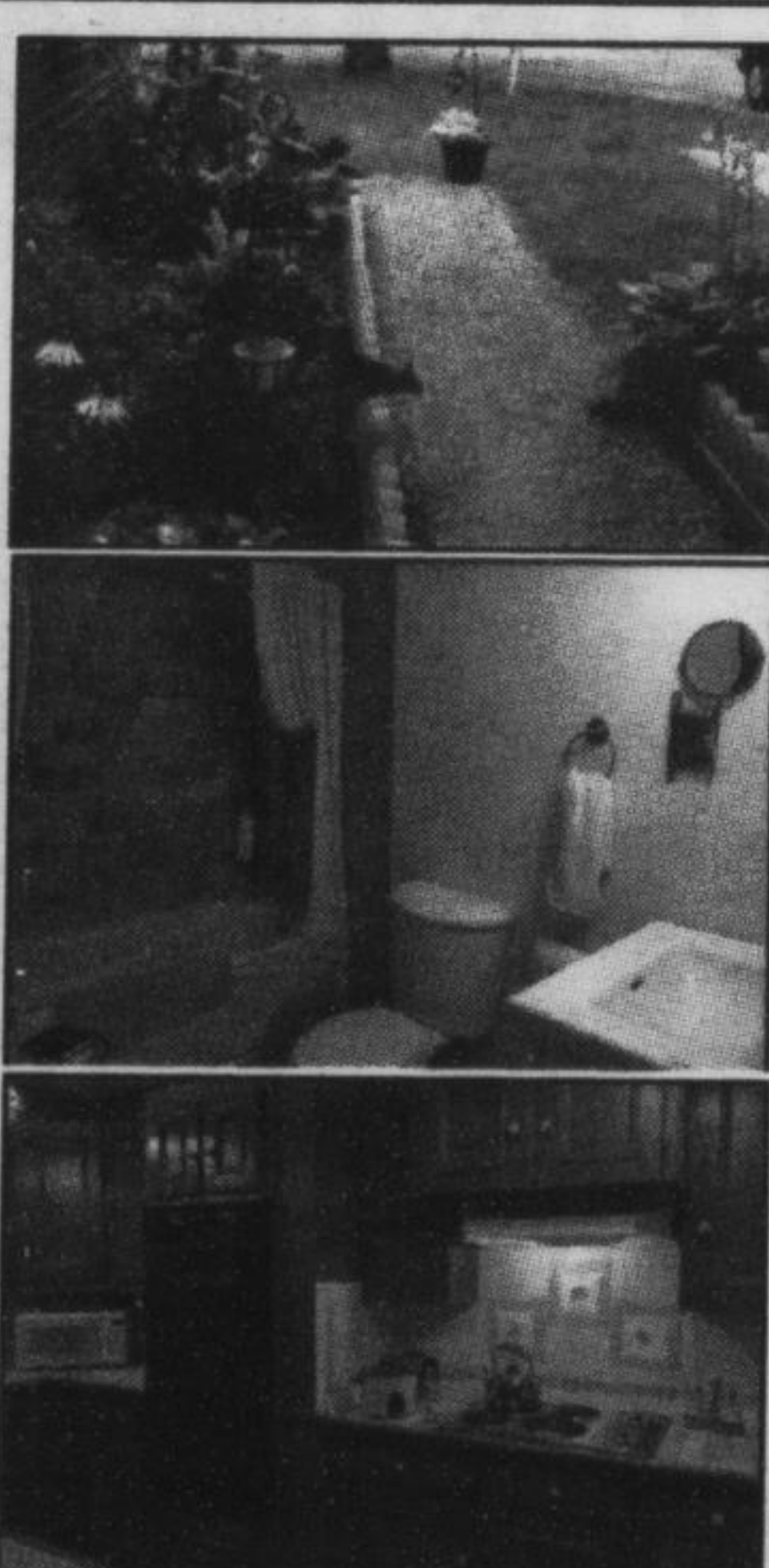
**Lana Harvey**  
Sales Representative

Direct: (416) 574-8116 • 905-875-8101  
lanaharvey@royallepage.ca

[www.LanaHarvey.com](http://www.LanaHarvey.com)



100 YEARS OF REALTY  
Meadowtowne Realty, a company independently owned and operated



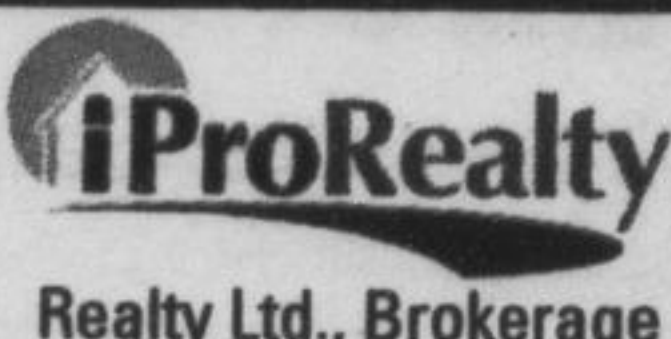
**OPEN HOUSE: SATURDAY 2:00 - 4:00**  
**650 CHILDS DR. UNIT #14, MILTON**

**\$314,800** Spotless 3 bedroom and 2.5 bathroom condo townhome located in sought after Timberlea. This is a very well cared for house with low condo fee. Custom made cabinets in the kitchen with 2 built-in ovens, ceramic backsplash and a stove top. Master bedroom with 2 pc en-suite bath. There is a full bathroom in the finished basement. Nice front porch and a deck in the backyard with gas hook-up for your BBQ invites you to enjoy morning coffees or relax in the evenings. Great neighbourhood, walk to Milton Mall, Go Station, Schools and Parks.



**Arek Malinowski**  
Sales Rep.

**905-699-6829**  
Office 905-693-9575



Realty Ltd., Brokerage

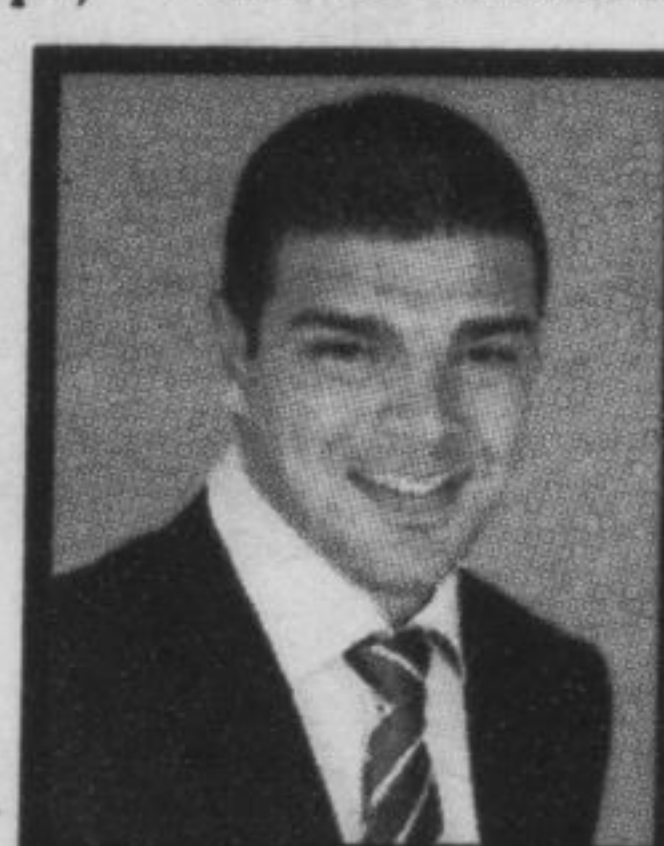


**\$454,900**

Stunning Mattamy widelot semi (Fernridge Model, 1665sqft) with beautiful landscaping and interlock walkway w/ built-in lights. Open concept floorplan, pot lights, gas fireplace, dark hardwood floors and stairs. Kitchen has stainless steel appliances, tile backsplash, and breakfast bar. Upstairs laundry and 3 Spacious bedrooms, including a master with his/hers closets and 4pc ensuite. Steps to schools, parks and public transit!



**KYLE LANDRY\***



**JASON VACHON\***



**KYLE & JAY.ca**

Direct: 647-220-4433 Office: 905-878-7777

\*Sales Representatives