

ROYAL LEPAGE
Meadowtowne Realty, Brokerage
Independently Owned and Operated

100
YEARS
SINCE 1913

Milton
milton

www.meadowtowne.com

905-878-8101
475 MAIN ST. E.,
MILTON



Carole D. Budworth*
905.864.9242

www.carolebudworth.com

Call For Your
Complimentary Home Evaluation



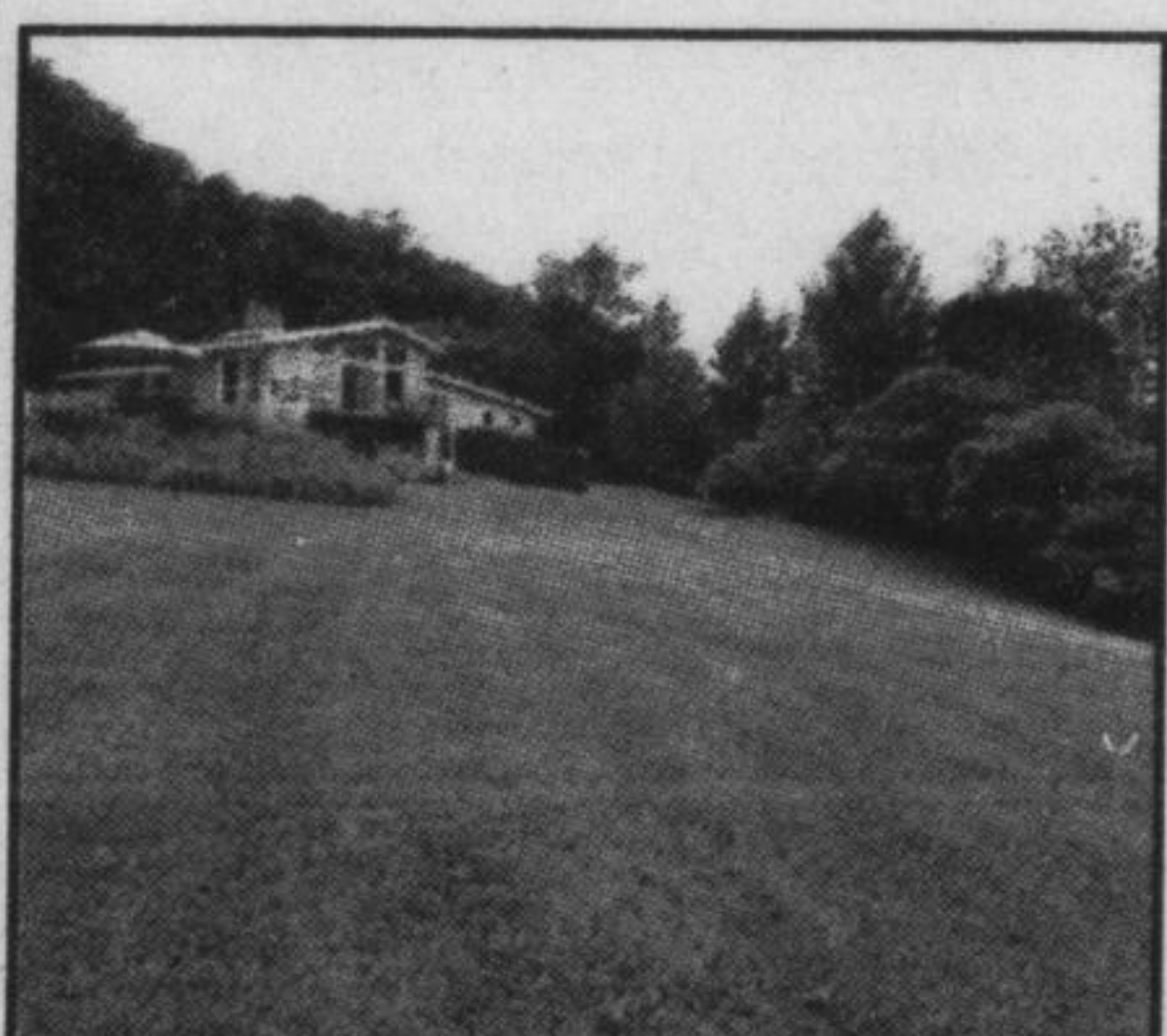
Fantastic Linked Semi

COMING SOON



on a quiet street with a pool sized fenced yard. Done to the nines with gleaming hardwood, ceramic, potlights, interlock front walkway, family room with gas fireplace, freshly painted throughout. No need to look any further. Call Carole for further info and to arrange a showing.

Spectacular View



Fabulous 2+ acres on the brow of the escarpment with a spectacular view. Located 5 minutes from town and within easy commuting of all major centres. Upgrades galore, great room addition with wrap around windows, cathedral ceilings and walk-out to deck overlooking the rear yard and view of Lake Ontario. Beautiful perennial gardens, inground pool, hot tub, decks, patios and walkways, oversized double

garage with inside entry, circular driveway with room for up to 10 cars. Three fireplaces, newer kitchen, baths, heated flooring, carpeting, several walk-outs. A perfect home in all seasons with total privacy. Call Carole for your private tour or visit my website at www.carolebudworth.com.



Doug Howden**
Broker

878-8101
doughowden@royalpage.ca



\$414,900

BRONTE MEADOWS

Nice family home with 3 bedrooms and finished basement. Eat in kitchen and wood burning fireplace on main floor. Second floor has new broadloom March 2014. 3 large bedrooms with a 2 piece master ensuite. Deep lot with deck from walkout in living room.

Adina Nonis
WORKING HARD TO BUILD LONG LASTING RELATIONSHIPS
Direct: 416-721-1311
www.adinanonis.com

PROUD SPONSOR OF THE WOMEN'S SHELTER FOUNDATION

FANTASTIC HOBBY FARM/ INVESTMENT WITH 1000 SQFT WORKSHOP
10 Acre country property/ Hobby Farm. 10 beautiful mostly cleared acres located on Guelph line north of Moffat. Wide frontage, a beautiful 3 bedroom 2 story home with lots of character and charm. Property features a large heated 1000 sq. ft. workshop with a tall large bay door, large barn with horse stalls. Call me to view or for additional information. \$675,000

FANTASTIC BUNGALOW
on Dublin Line, about 3/4 of an acre. Appx. 1800 sq. ft. with basement apartment/ separate entrance. Minutes to 401 and downtown Milton. All renovated outside and inside, parking up to 11 vehicles, large double garage with 12ft. ceilings. Visit my virtual tour at www.myvisualhomes.com/adinanonis



Eva Gooding*
Sales Representative

Office 905-878-8101
Direct 905-691-2401

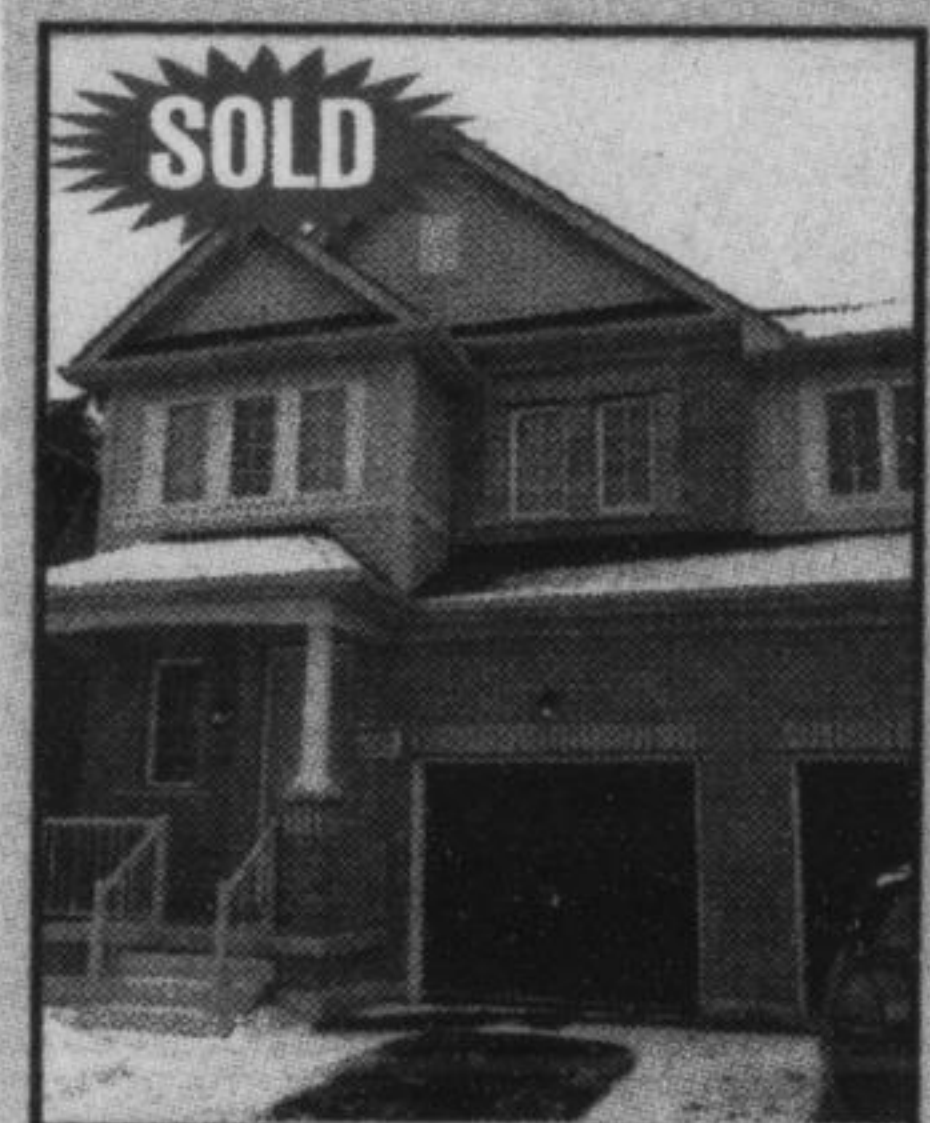
www.evagooding.com
evagooding@royalpage.ca



COMING SOON

Award winning Mattamy home built on a calm prestigious crescent. From the porch of this home, you'll be introduced to an interior showplace with several valuable custom changes upon building. The home offers your choice of a main floor office or den. Inviting family room with coffered ceiling leads to the gourmet eat-in kitchen with breakfast bar and extended cabinetry. Second level is dressed-to-impress with a relaxing master bedroom that has an ensuite oasis including a Jacuzzi tub. Two other playful children's bedrooms of which one has a walk-in closet. No sidewalk allows for two car parking plus garage with inside access. Parkettes and playgrounds scattered throughout the neighbourhood. Ideally located to all major transportation routes, easy access for commuters, and close to all lifestyle needs. In step the times, simply beautiful!

Listed for \$538,880.

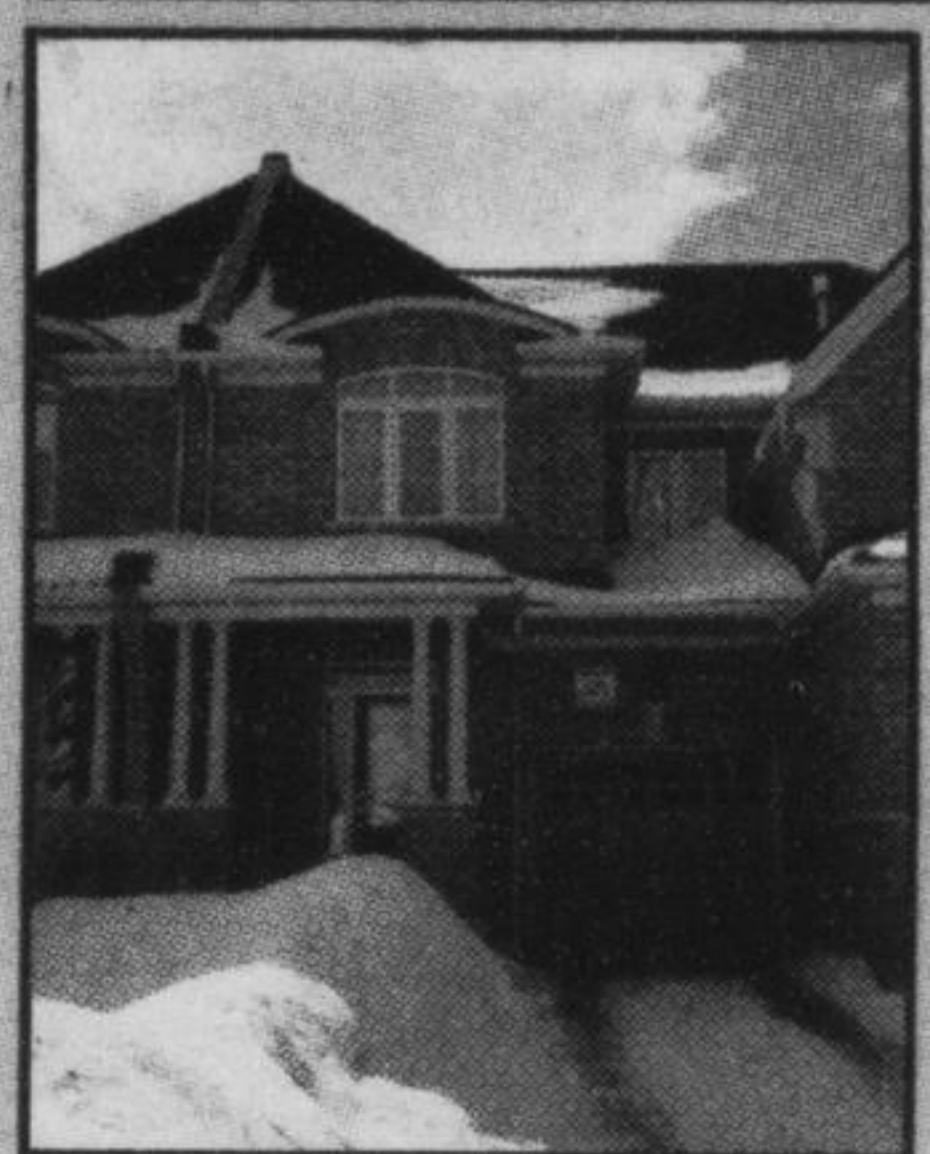


SOLD

LESS THAN A YEAR OLD

Lavish, trendy semi-detached home situated in the peaceful Miltonbrook community. Hardwood throughout the main floor, open concept great room with gas fireplace overlooking large eat-in kitchen with top of the line appliances, ceramic tile, and backsplash. Second level with a master bedroom including his and her closets and a 4-piece ensuite with separate shower and soaker tub. Two other more than accommodating in size bedroom. Perfect location to call home, love where you live!

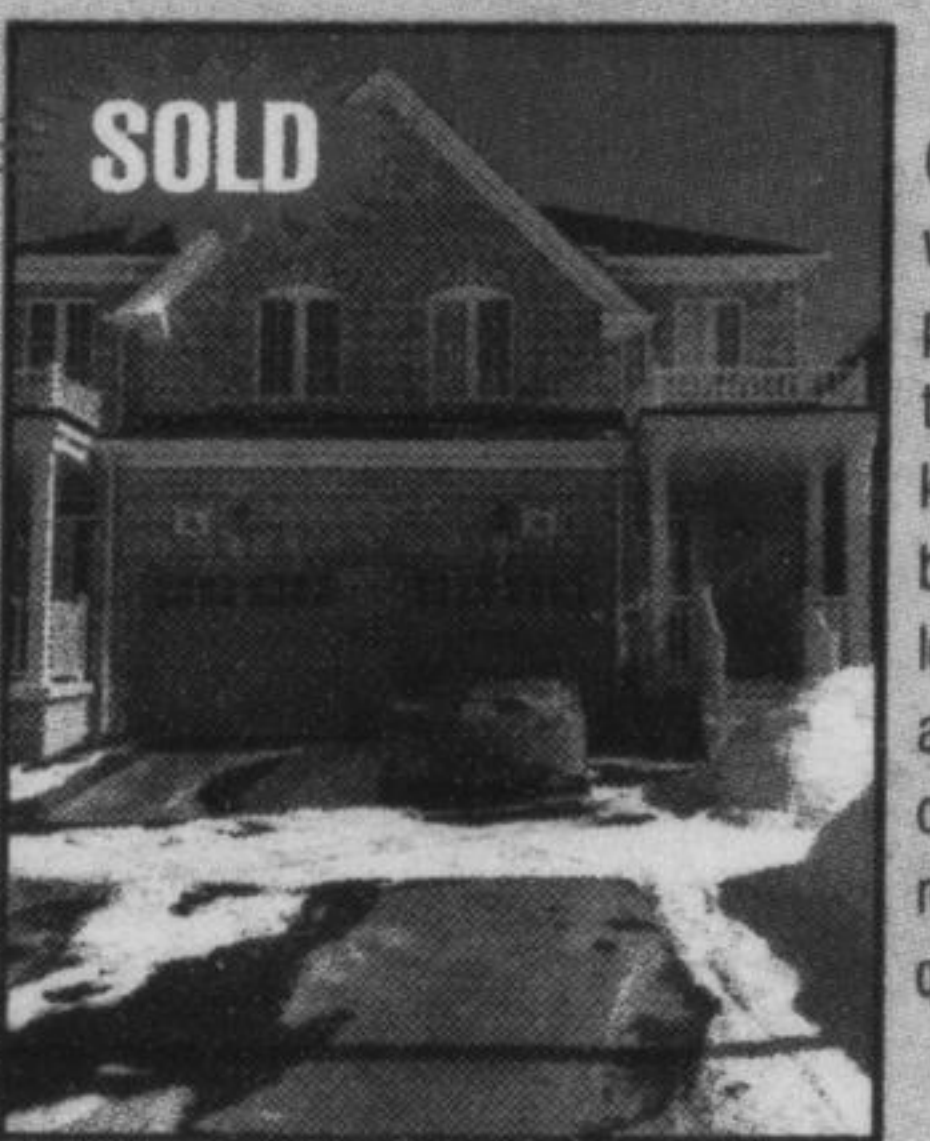
Listed for \$469,900.



VALLEY GREEN COMMUNITY

Classic townhome in the Valley Green community with the Escarpment in the background. Long extended driveway can fit at least two cars, plus garage with back door to yard. Attractive stone and brick exterior, upon entering from the porch, you'll be so impressed with all the interior finishes and detailing. Mocha stained kitchen cabinetry with breakfast bar and all appliances included. Sun filled living room with gas fireplace adjacent to the dining room, all accented with mocha stained hardwood floors. Hardwood staircase leads to a dressed to impress second level with relaxing master bedroom including an ensuite and separate shower. Two other playful children's bedrooms. Basement finished by the builder. In step with the times, love where you live!

Listed for \$438,900.



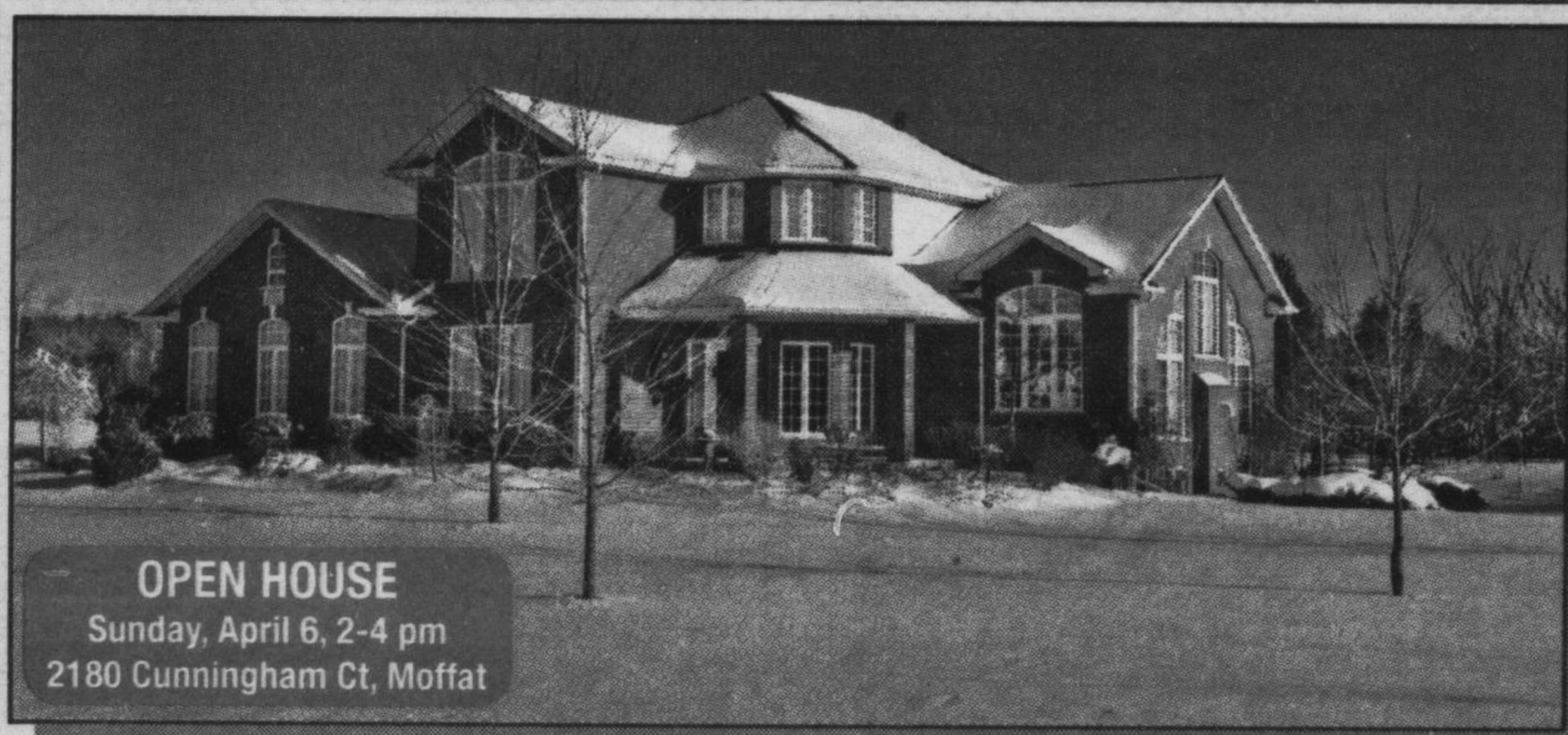
SOLD

OVERLOOKING POND

Classic semi-detached, all brick on premium lot facing the pond, with colourful views of the Escarpment in the background. Covered porch leads to large entrance way, hardwood and 9 ft ceilings on the main floor, three sided fireplace in dining/living room. Eat-in kitchen with stainless steel appliances and garden doors to backyard. Oak staircase leads to the dressed to impress second level with master bedroom including an ensuite with soaker tub and separate shower. Two other generous sized bedrooms of which one overlooks the pond and 4-piece bathroom. Finished recreation room is that added bonus for entertaining or family time. Where quality lasts a lifetime. Become part of the few.

Listed for \$449,900.

Feature Home

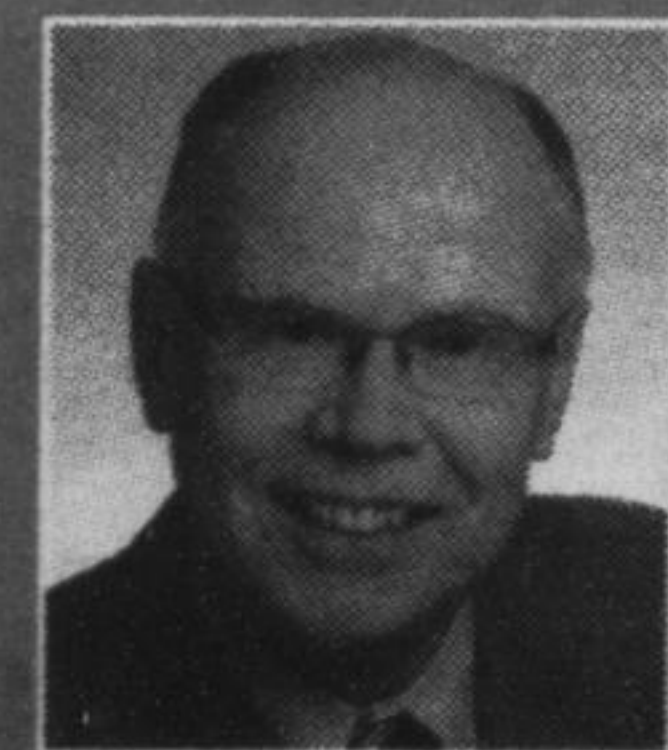


OPEN HOUSE

Sunday, April 6, 2-4 pm
2180 Cunningham Ct, Moffat

BEAUTIFUL 4-BEDROOM COUNTRY HOME

Beautiful country home in Tuscan Ridge, a rural estate subdivision just north of Campbellville, minutes from the 401. Situated on two manicured acres and serviced by Natural Gas, this home is the ideal blend of the peace of country living combined with the benefits of a welcoming community. With over 3,200 sq. ft. above-ground, it features a main-floor Master Bedroom with luxury Ensuite Bathroom, 2-storey Great Room, huge eat-in Kitchen, and so much more. Virtual Tour: www.VirtualViewing.ca/multimedia/mm_2180Cunningham. \$957,000.



Alan McDonald**
P.Eng., M.B.A.
Broker

905-878-8101

Residential & Commercial
Fax: 905-878-8188
al@royalpage.ca

www.royalpage.ca/mcdonald

ROYAL LEPAGE

Meadowtowne Realty, Brokerage
Independently Owned and Operated

Feature Home

Top 3% Nationally for Royal LePage



Barbara Crowe, M.V.A.
BROKER
barbcrowe@royalpage.ca



905-878-8101

To view our listings go to
www.THEHOMEHUNTER.ca

ROYAL LEPAGE
Meadowtowne Realty, Brokerage
Independently Owned and Operated



Hunter Obee, B.COMM.
SALES REPRESENTATIVE
hunter@thehomehunter.ca



ONCE AGAIN ALL OUR LISTINGS HAVE SOLD. IF YOU ARE THINKING OF SELLING CALL THE DYNAMIC DUO FOR AN APPRAISAL 905-878-8101