

# Police vehicles getting new look

By David Lea  
METROLAND WEST MEDIA GROUP

Residents can expect to start seeing black-and-white police cruisers patrolling the streets of Milton late this summer or early fall.

The Halton Regional Police Service Board voted last Thursday to change the colour of police vehicles. They will move away from the current all-white branding that has been in place since 2009.

The change will only affect newly-purchased vehicles so existing police cruisers will be kept in service.

"We're partly looking at visibility," said Halton Police Chief Stephen Tanner.

"One thing we are hearing from citizens is they like the visibility. They want to see police vehicles more often. They want to see police officers more often... The design of the vehicles may have some impact on visibility and other police services have addressed that as one of the primary reasons for changing the design."

The trend among police services across Ontario has been to shift back to black-and-white vehicles so the public can instantly recognize them, outlining the chief in his report to the board.

He noted black-and-white cruisers would



Black and white police cruisers are coming to Halton.  
Image courtesy of Halton Regional Police

provide a distinctive presence for police and enhance the organization's efforts toward traffic safety, increased community presence and overall community safety. Tanner said 600 members of the Halton Regional Police Service were surveyed to get

MILTON HYUNDAI

**DEALER INVOICE PRICING** + **0%**<sup>†</sup>  
**FINANCING**

YOU PAY WHAT THE DEALER PAYS<sup>†</sup>

<sup>†</sup>On select models. <sup>†</sup>Dealer is reimbursed for holdback included in invoice price.



GLS model shown  
Selling Price: \$19,275

2014  
**ACCENT 4-DOOR**

DEALER INVOICE PRICE: **\$14,256<sup>†</sup>**

OR

**\$69** DOWN PAYMENT  
**0%<sup>†</sup>** FINANCING FOR 96 MONTHS  
**\$0** DOWN PAYMENT

ACCENT L 4-DOOR MANUAL. DEALER INVOICE PRICE INCLUDES \$770 IN PRICE ADJUSTMENTS\*, DELIVERY, DESTINATION, AND FEES. PLUS HST.



Limited model shown  
Selling Price: \$23,890

2014  
**ELANTRA L**

DEALER INVOICE PRICE: **\$16,388<sup>†</sup>**

OR

**\$79** DOWN PAYMENT  
**0%<sup>†</sup>** FINANCING FOR 96 MONTHS  
**\$0** DOWN PAYMENT

ELANTRA L MANUAL. DEALER INVOICE PRICE INCLUDES \$1,197 IN PRICE ADJUSTMENTS\*, DELIVERY, DESTINATION, AND FEES. PLUS HST.



Limited model shown  
Selling Price: \$28,501

2014  
**SANTA FE SPORT**

DEALER INVOICE PRICE: **\$27,189<sup>†</sup>**

OR

**\$136** DOWN PAYMENT  
**0.9%<sup>†</sup>** FINANCING FOR 96 MONTHS  
**\$0** DOWN PAYMENT

SANTA FE SPORT 2.4L FWD. DEALER INVOICE PRICE INCLUDES \$1,300 IN PRICE ADJUSTMENTS\*, DELIVERY, DESTINATION, AND FEES. PLUS HST.



Limited model shown  
Selling Price: \$27,530

2014  
**TUCSON GL**

DEALER INVOICE PRICE: **\$22,933<sup>†</sup>**

OR

**\$119** DOWN PAYMENT  
**1.9%<sup>†</sup>** FINANCING FOR 96 MONTHS  
**\$0** DOWN PAYMENT

TUCSON 2.0L GL FWD MANUAL. DEALER INVOICE PRICE INCLUDES \$402 IN PRICE ADJUSTMENTS\*, DELIVERY, DESTINATION, AND FEES. PLUS HST.

**YOU PAY THE INVOICE PRICE PLUS GET 0%<sup>†</sup> FINANCING FOR 96 MONTHS**

**5 YEAR WARRANTY** 5-year/100,000 km Comprehensive Limited Warranty<sup>††</sup>  
5-year/100,000 km Powertrain Warranty  
5-year/100,000 km Emission Warranty

**HYUNDAI** NEW THINKING. NEW POSSIBILITIES.<sup>™</sup>  
HyundaiCanada.com

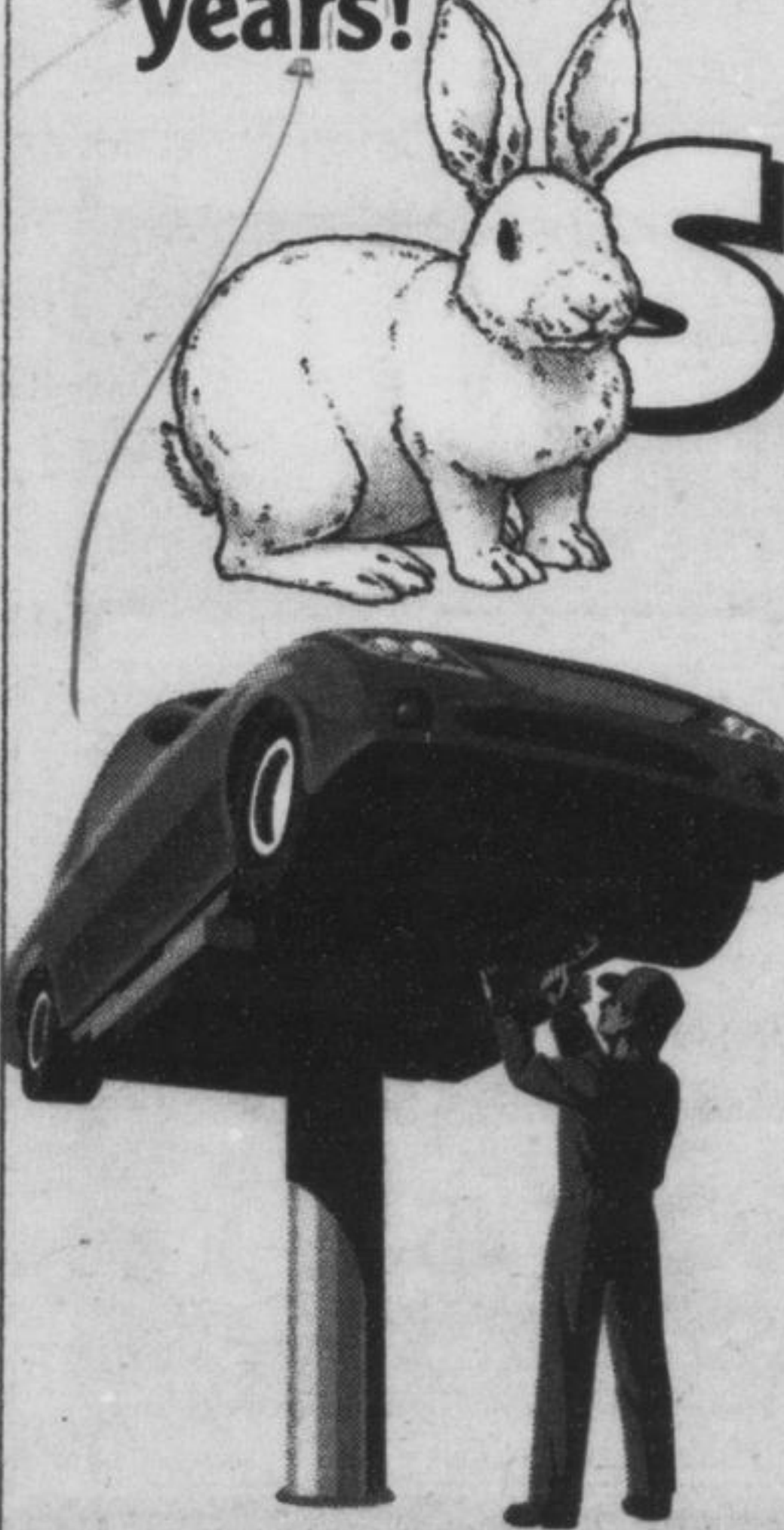
1285 STEELES AVENUE EAST, MILTON ONTARIO L9T 0K2  
1 (866) 980-8992 | WWW.MILTONHYUNDAI.COM

\*The Hyundai names, logos, product names, feature names, images and slogans are trademarks owned by Hyundai Auto Canada Corp. †Finance offer available O.A.C. from Hyundai Financial Services based on a new 2014 Accent 4-Door L Manual/Elantra L 6-Speed Manual/Carta Fe Sport 2.4L FWD/Tucson 2.0L GL FWD Manual with an annual finance rate of 0.9%/0.9%/1.9% for 96 months. Bi-weekly payments are \$69/\$136/\$119. \$0 down payment required. Cost of Borrowing is \$0. Finance offer includes Delivery and Destination of \$1,590/\$1,590/\$1,700. HST, taxes, license, and all applicable charges including HST. Finance offer excludes registration, insurance, PPVA and license fees. Delivery and Destination charge includes freight, P.D.E., dealer admin fees and a full tank of gas. Dealer invoice price of 2014 Accent 4-Door L Manual/Elantra L 6-Speed Manual/Carta Fe Sport 2.4L FWD/Tucson 2.0L GL FWD Manual are \$14,256/\$16,388/\$22,933. Price includes price adjustments of \$770/\$1,197/\$402 and includes Delivery and Destination of \$1,590/\$1,590/\$1,700, taxes, license, and all applicable charges including HST. Finance offer excludes registration, insurance, PPVA and license fees. Delivery and Destination charge includes freight, P.D.E., dealer admin fees and a full tank of gas. The customer price is the invoice price from Hyundai Auto Canada Corp. The dealer invoice price includes a holdback fee for which the dealer is subsequently reimbursed by Hyundai Auto Canada Corp. Price adjustments are calculated against the vehicle's starting price. Price adjustments of up to \$770/\$1,197/\$402 available on all 2014 Accent 4-Door L 6-Speed Manual/Elantra L 6-Speed Manual/Carta Fe Sport 2.4L FWD Auto Tucson 2.0L GL FWD Manual on cash purchases. Price adjustments applied before taxes. Offer cannot be combined or used in conjunction with any other available offers. Offer is non-transferable. \$1,590/\$1,590/\$1,700. Delivery and Destination charges of \$1,590/\$1,590/\$1,700. HST, taxes, license, and all applicable charges including HST. Prices exclude registration, insurance, PPVA and license fees. ††Actual fuel economy may vary based on driving conditions and the addition of certain vehicle accessories. Fuel economy figures are used for comparison purposes only. †HSA offers available for a limited time, and subject to change or cancellation without notice. Dealer sets and sets inventory to limited, dealer order may be required. Visit www.hyundacanda.com or see dealer for complete details. ††Hyundai's Comprehensive Limited Warranty coverage covers most vehicle components against defects in workmanship under normal use and maintenance conditions.

# QUICK LUBE SERVICE

Drop by and pick up your 2014 calendars

Thanks for 26 great years!



WITH THE TEMPERATURE RISING  
It Would Be A Good Time To Remove Your Winter Tires, Check Your Front End and Have Your Alignment Checked...

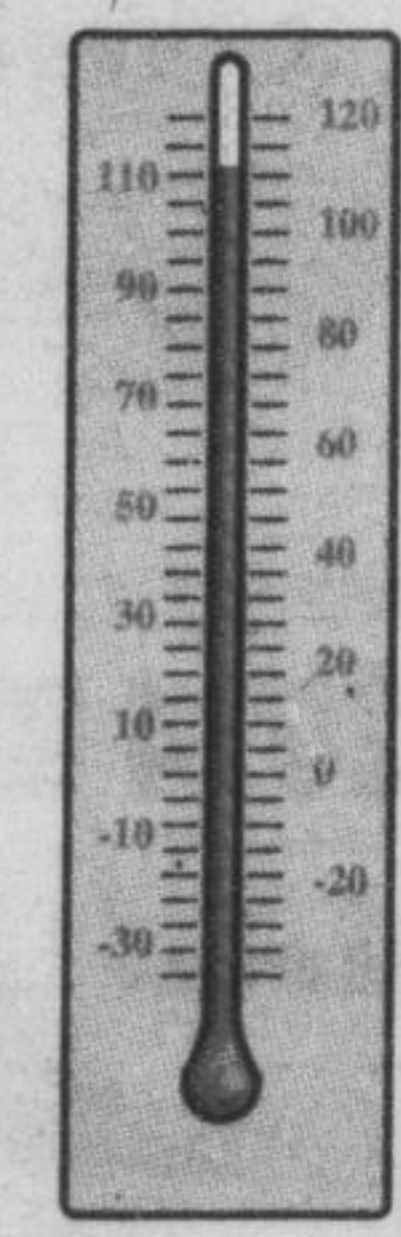
AND DON'T FORGET THE AIR CONDITIONER!

# Brian's

Auto Repairs & Tire Centre

390 Ontario St. N., Unit #1, Milton  
HRS: Mon - Fri 7:5-5:30 • Sat 8-12 (except long weekends)

905-875-1522



\*Accredited Test & Repair Facility