

# ZING INTO SPRING

SALES EVENT

**PULL-AHEAD BONUS CASH \$1,000**

**+1% RATE REDUCTION**  
ENDS MARCH 31<sup>ST</sup>

PULL-AHEAD INTO A NEW VEHICLE SOONER. EXCLUSIVE TO OUR EXISTING FINANCE AND LEASE CUSTOMERS.

## THE ULTIMATE FAMILY VALUE BONUS IS BACK!

### 2014 DODGE GRAND CARAVAN "30TH ANNIVERSARY EDITION"



3.6L V6, 6 SPEED AUTO, 2 ROW STOW'N GO, 3 ZONE AIR CONDITIONING, LEATHER TRIM, U-CONNECT HANDS FREE, DVD, TOUCH SCREEN, ST#286954

**\$27,800** +HST & LIC

**\$157** OR **\$0 DOWN**  
BI-WEEKLY +HST & LIC  
4.29% BI-MOS O.A.C.

### 2014 DODGE JOURNEY "BLACK TOP PACKAGE"



8.4" TOUCH SCREEN, U-CONNECT DVD, TOURING SUSPENSION, 19" GLOSS BLACK ALUMINUM WHEELS, HUMIDITY SENSOR, ST#198047

**\$26,600** +HST & LIC

**\$152** OR **\$0 DOWN**  
BI-WEEKLY +HST & LIC  
4.29% BI-MOS O.A.C.

### 2014 RAM 1500 CREW & QUAD CAB



**\$10,000**  
UP TO  
TOTAL SAVINGS

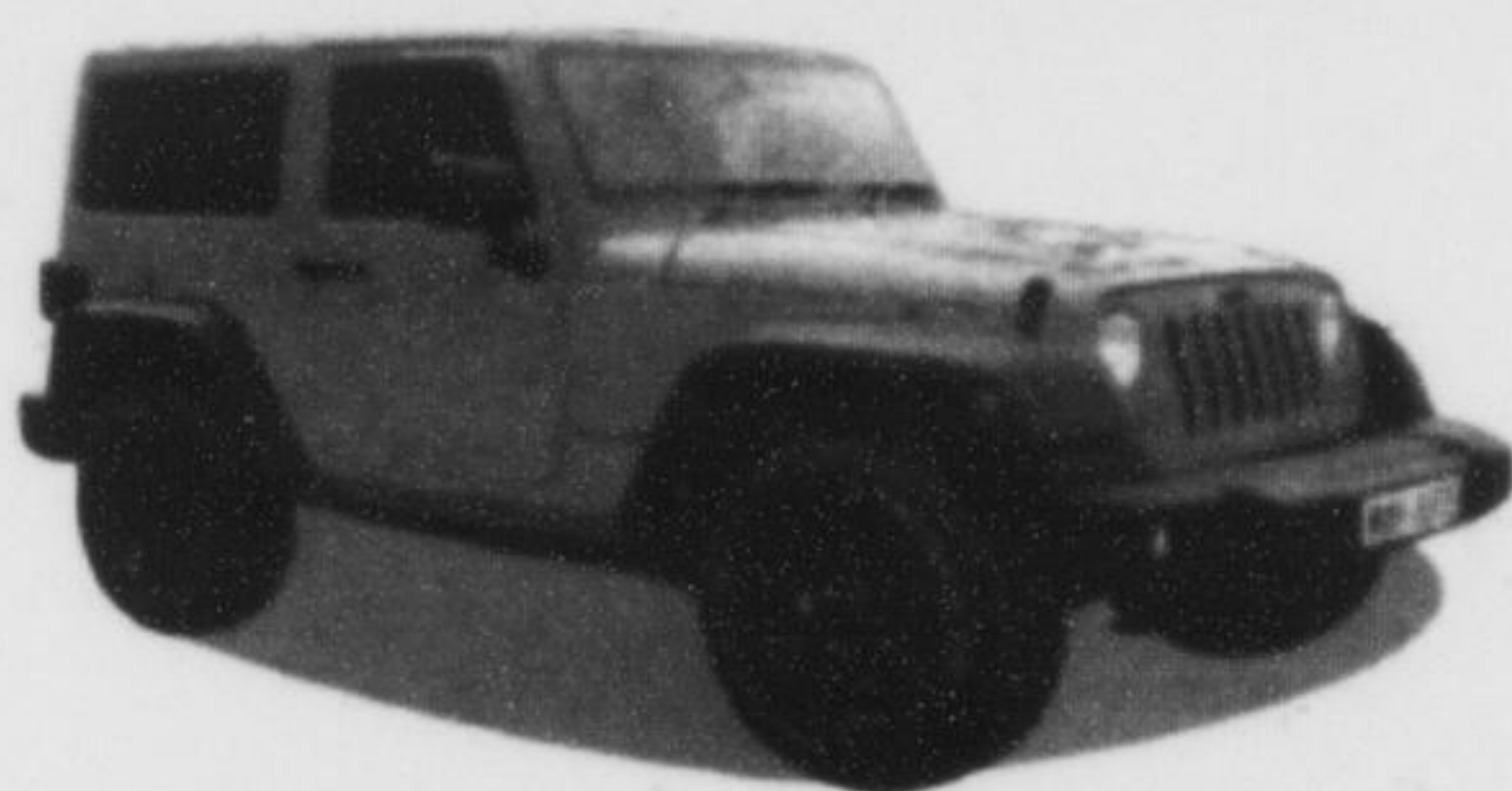
### ALL NEW 2014 JEEP GRAND CHEROKEE



**\$2,500**  
LEASE BONUS

## SAVINGS YOU HAVE TO SEE TO BELIEVE!

### 2014 JEEP WRANGLER



**\$2,500**  
FACTORY SAVINGS

### 2014 JEEP COMPASS & 2014 JEEP PATRIOT



**\$2,750**  
FACTORY SAVINGS

### 2013 DODGE DART



10 TO CHOOSE FROM!

STARTING FROM  
**\$15,999**  
PLUS HST & LIC

**0%** FINANCING  
UP TO 36 MONTHS

### 2014 RAM PROMASTER



STARTING FROM  
**\$33,290**  
PLUS HST & LIC



**81 Ontario Street N.**

Just North of Target /Milton Mall

[miltonchrysler.com](http://miltonchrysler.com)

**905-878-8877**

Highway 401  
Steeles Ave.

