

We're Connected

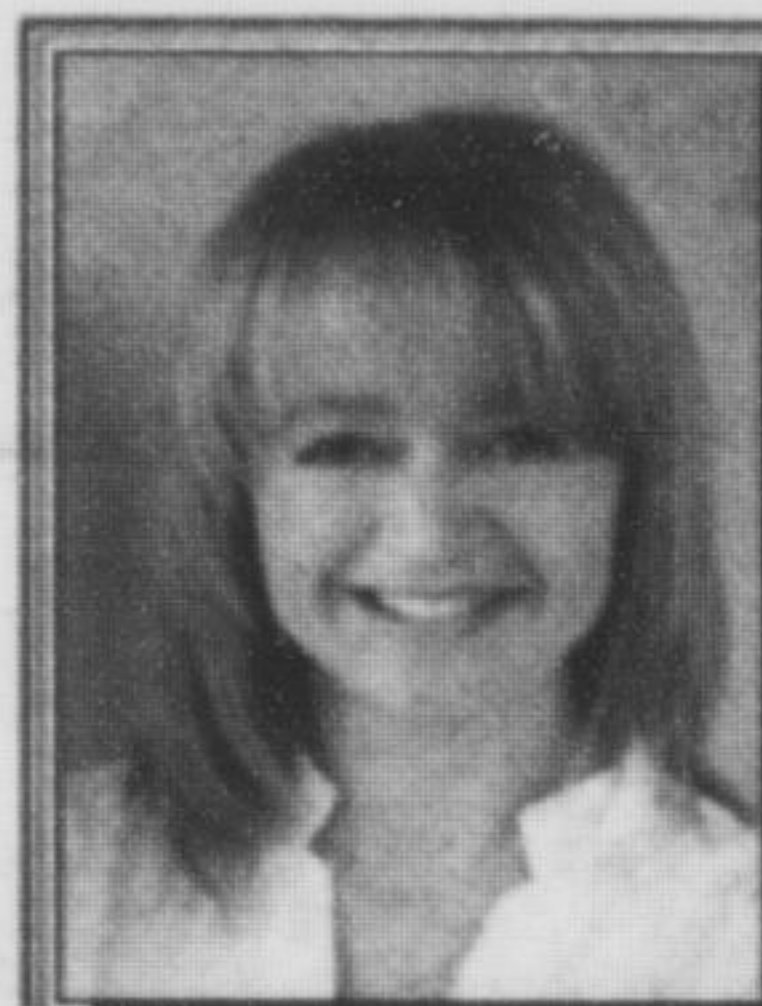


metrolandmedia
Connected to your community™

the Canadian Champion

www.insidehalton.com

Milton's community newspaper since 1860



Melanie Blay
Sales Rep.

RE/MAX
REAL ESTATE
CENTRE

905
878-7777

www.melanieblay.com

ZAK'S PHARMACY

Milton's Independent Pharmacy

- Free Delivery
- 10% Seniors Discount
- All Drug Plans Accepted
- Written Drug Info. Available



"At Zak's We Care About Your Health"

70 Main St. E. 875-2424

A Metroland Media Group Publication • Volume 155 No. 3

Thursday March 27, 2014

68 Pages • \$1.00 (incl. H.S.T.)



Learning art of blacksmithing

The Milton Historical Society held a beginner blacksmithing class at the Waldie Blacksmith Shop last weekend. Here, Greg Burns holds the coat hook he was making in the flame to get hot while Steve St. Clair fans the flame.

Eric Riehl / Canadian Champion (Follow on Twitter @halton_photog)

SPECIAL REPORT:

New hospital set to open late next year in Oakville

Halton Hospitals: Building our Health Care is a special Metroland Media West four-part project that explores the need for, status and funding of numerous hospital expansion/construction projects in Halton's four municipalities — Milton, Oakville, Burlington and Georgetown. Here, the second part of the series looks at the new Oakville hospital that will replace Oakville-Trafalgar Memorial Hospital.

By David Lea

METROLAND WEST MEDIA GROUP

The new \$2.7-billion Oakville hospital is set to open its doors in December 2015 on Dundas Street at Third Line.

On opening day, the state-of-the-art facility will have 320 beds.

However, just a year later, that number will begin to quickly swell, such that there will be 457 beds in six years and 602 beds

Pedestrian railway safety meeting unprecedented

By Michael Gregory
CANADIAN CHAMPION STAFF

Politicians and rail officials held an unprecedented meeting on pedestrian safety in Milton last week thanks to the advocacy work of a Burlington mother whose son was killed near Appleby Line more than 15 years ago. Halton MP and Transport Minister Lisa Raitt organized the meeting between herself, Town of Milton officials and representatives

from railways including CPR, CN, GO Transit and VIA Rail after a phone call from Denise Davy a few weeks ago.

Davy's son Ryan was struck by a train on the tracks east of Appleby Line in 1998.

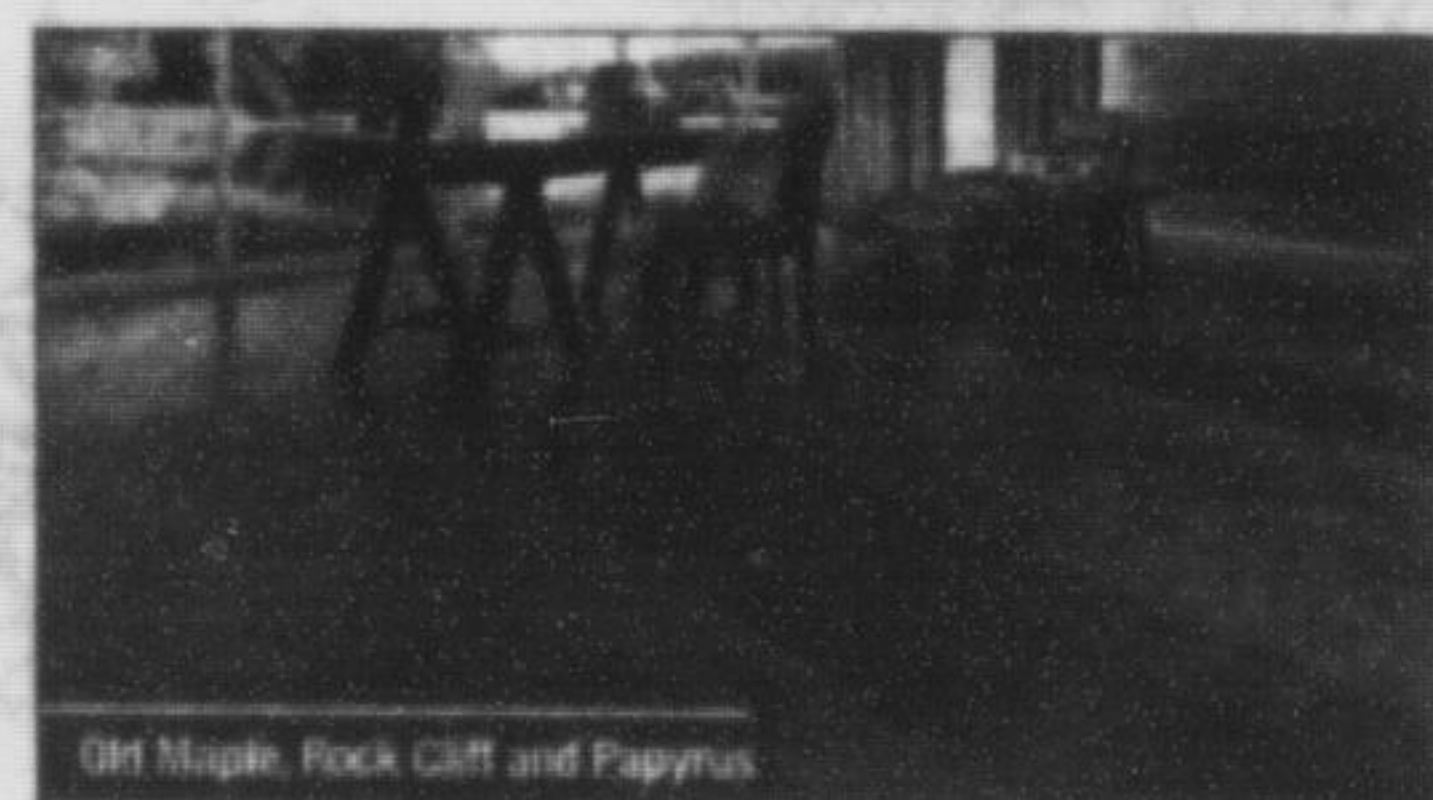
"This is the start of a conversation on this issue — so that's huge," she said.

The former *Hamilton Spectator* reporter is a vocal advocate for changes to pedestrian safety near railways, recently speaking to Mississauga and Burlington councils as

inside

Opinion	6
Hot Listings	24
Sports	36
Classifieds	42

INSERTS: March 27, 2014
Food Basics, Home Outfitters, Fortin's, Bonclaire, Home Hardware, M&M Meats, Smart Source, Metro, Salvation Army, Jysk Bed Bath, Lastman's Bad Boy, Arrow Furniture, No Frills, Food Fort, Marketplace Jacket, Lewis Canada, Ross, Tiger Direct, Real Canadian Superstore, Popeye's Supplements, Twice The Deal, WinSide Inc., 2001 Audio Video, Canadian Tire Corp., Best Buy Canada Ltd., Pharma Plus, Long's Tire Stores, Rosell, Long's, Target, Toyota Canada, XS Cargo, Walmart Canada Corp., Jays R Us, The Source, Sport Chik F&I, Sports-Site Guide, The Source, Sobeys, Walmart Canada Corp., Sears Canada Inc., Future Shop, MBNA, Sears Canada Inc.
** All Flyers not necessarily delivered to all homes **



mirage
Hardwood
Flooring Sale

\$0.50/sq. ft.
Rebate

Until May 24, 2014 only!

Applicable on ALL standard Mirage hardwood floors from March 31 to May 24, 2014.

Call or visit us for more details.

Fine Flooring & More
Where quality and style meet.

www.tielemansfineflooring.com

340 Main Street, Milton
905-878-3435



"Rupert"
Hawkins

Dear Rupert, My neighbour's dog was rescued having fallen through the ice on a pond. Please can you warn all the pets and people about such dangers.
Signed: Colin, Welsh Border Collie

Dear Colin, You are right, waterways can be enticing, but the ice may not be as sturdy as it appears. You can never be sure of its thickness or how much weight it can support. This can pose a 'real threat' to the safety of any pet or person. Please keep your dogs on a leash and away from such dangers. Don't put yourself or your pet at risk. Stay off the ice. This time of year, there is no such thing as safe ice. Signed: Rupert

Hawkins Animal Hospital

550 Ontario Street South
905-875-6888