

Readers' Corner

insidehalton.com

7 | Thursday December 12, 2013 | MILTON CANADIAN CHAMPION | www.insidehalton.com

Letters

Rebels with a Cause had great support in 2013

Dear Editor:

We're writing this letter as proud team captains of Relay for Life team Rebels with a Cause.

As our team eagerly starts off their fundraising for 2014, we look back in amazement at the past year.

In 2013, Rebels with a Cause held the Third Annual Luau to End Cancer at Ned Devine's Irish Pub in Milton. Our team saw an overwhelming flow of support from our friends, family and the general public of Milton. In just five hours we raised \$3,399.

Rebels with a Cause would like to thank Ned Devine's Irish Pub for the donation of their location. We would specifically like to recognize the staff who worked endlessly the night of our fundraiser, and AM Entertainment for donating their time and musical expertise.

We would also like to thank the many local and distant businesses that donated prizes. Please visit our facebook page to view a listing of these companies (<https://www.facebook.com/pages/Rebels-with-a-Cause/259557920852489>).

Our team is very happy to announce that we will be working with Ned Devine's Irish Pub again this upcoming year for the Fourth Annual Luau to End Cancer on June 1, 2014. We hope to see you there.

In addition, Rebels with a Cause baked tirelessly for three bake

sales, raising a total of \$1,764.97. We would like to send a large thank-you to the members of the St. Clair Lodge Masonry, especially Bro. Robert Crawford and Jim and Fannie Hunter. If it weren't for the donation of their spotless kitchen, our team would never have been able to participate in the Milton Farmers' Market.

Lastly, Rebels with a Cause co-captains Stephanie Casselman and Ashley Mitchell would like to thank their team members: Meredith Barret, Sharla Brownlow, Jenny Buck, Gaby Caruso, Laura Coulson, Torri Harding, Erin Tan, Tawny Coulson, Kelsie Koho, Brianne Stoutley and Kamie Virk. Each of these individuals sacrificed time and contributed an enormous amount of determination to make 2013 a great success. We donated a staggering \$9,670.30 to the Canadian Cancer Society.

As team captains, we find it harder each year to express our thoughts and emotions of gratitude. We're honoured to be part of such a caring and giving community and team.

Follow us on twitter (@RebelsWithACauz) and facebook or contact us at rebelswithacausefl@gmail.com to see what Rebels with a Cause is up to.

Stephanie Casselman
and Ashley Mitchell

SNAPSHOT



STRIKING CONTRAST: *Champion* reader Doug Ralph captured this shot of a blue jay and a burning bush in rural Milton.

Do you have a unique, interesting, fun or cute photo taken in Milton that you would like to submit to be considered for Snapshot? Send submissions (minimum 600 KB resolution) to kmiceli@miltoncanadianchampion.com. Please include the name of the photographer (for publication) and a description of the photo including the location where it was taken.

Letters welcome

The Canadian Champion welcomes letters to the editor.

Letters should be no more than 300 words. We reserve the right to edit, revise and reject letters.

Letters must be signed with first and last name for publication, and the address and the tele-

phone number of the writer included for verification purposes only.

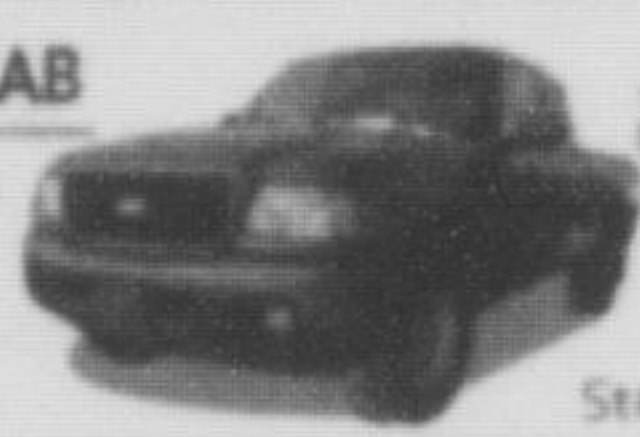
Email your letters to kmiceli@miltoncanadianchampion.com or send by mail to 555 Industrial Dr., Milton, Ont., L9T 5L1, or leave them at our office. Our office hours are Monday to Friday from 9 a.m. to 4 p.m.

LET US GET YOU ON THE ROAD THIS HOLIDAY SEASON!

2009 FORD RANGER SPORT SUPERCAB

4.0L V6, AUTO, ABS, FOG LIGHTS, TONNEAU COVER, TOW HITCH RECEIVER, 122,674KMS

\$11,988 PLUS HST & LIC



AIR & ALLOYS
ST# 3744A

2011 FORD EDGE SEL AWD

3.5L V6, Auto, Dual Climate Control, Heated Seats, ABS, Traction Control, Keyless Entry, Cruise Control, 113,687kms

\$19,988 PLUS HST & LIC



SYNC, TOW PKG. & BACKUP SENSORS
ST# 3752A

2012 FORD EXPLORER XLT 4X4

3.5L V6, Auto, Cruise Control, Auto Temp Control Sync, Spoiler, Steering Wheel Controls, 42,966kms

\$31,488 PLUS HST & LIC

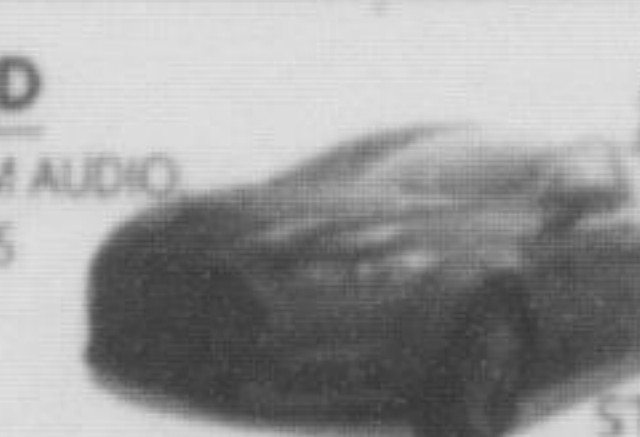


PANORAMIC ROOF & REAR VIEW CAMERA
ST# 3747A

2013 FORD FUSION TITANIUM HYBRID

CVT, HEATED SEATS, LEATHER, MEMORY SEATS, NAV, PREMIUM AUDIO, REAR VIEW CAMERA, REMOTE START, PMOONROOF, 6,896KMS

\$34,988 PLUS HST & LIC



FORD EXECUTIVE DRIVER
ST# 3750A

2009 FORD FUSION SEL

2.3L 4 CYL, MANUAL, CLIMATE CONTROL, CRUISE CONTROL, PMOONROOF, FOG LIGHTS, 30,900KMS

\$10,988 PLUS HST & LIC



ONLY 36,900 KMS!
MOONROOF & AERODYNAMIC SOUND
ST#FN13064A

2013 FORD FOCUS SE

2.0L 4 CYL, AUTO, AIR, CRUISE CONTROL, TRACTION CONTROL SYSTEM, KEYLESS ENTRY, 34,241KMS, PREVIOUS DAILY RENTAL

\$14,488 PLUS HST & LIC



CRUISE CONTROL & SYNC
ST# 3711A

Gallinger 
MILTON est. 1967 LINCOLN

655 MAIN STREET E., MILTON
905-875-FORD(3673)



Gallinger
price match GUARANTEE

SALES • LEASING • NEW • PRE-OWNED • SERVICE • PARTS