

ROYAL LEPAGE
Meadowtowne Realty Brokerage
Independently Owned and Operated

ROYAL LEPAGE MEADOWTOWNE REALTY

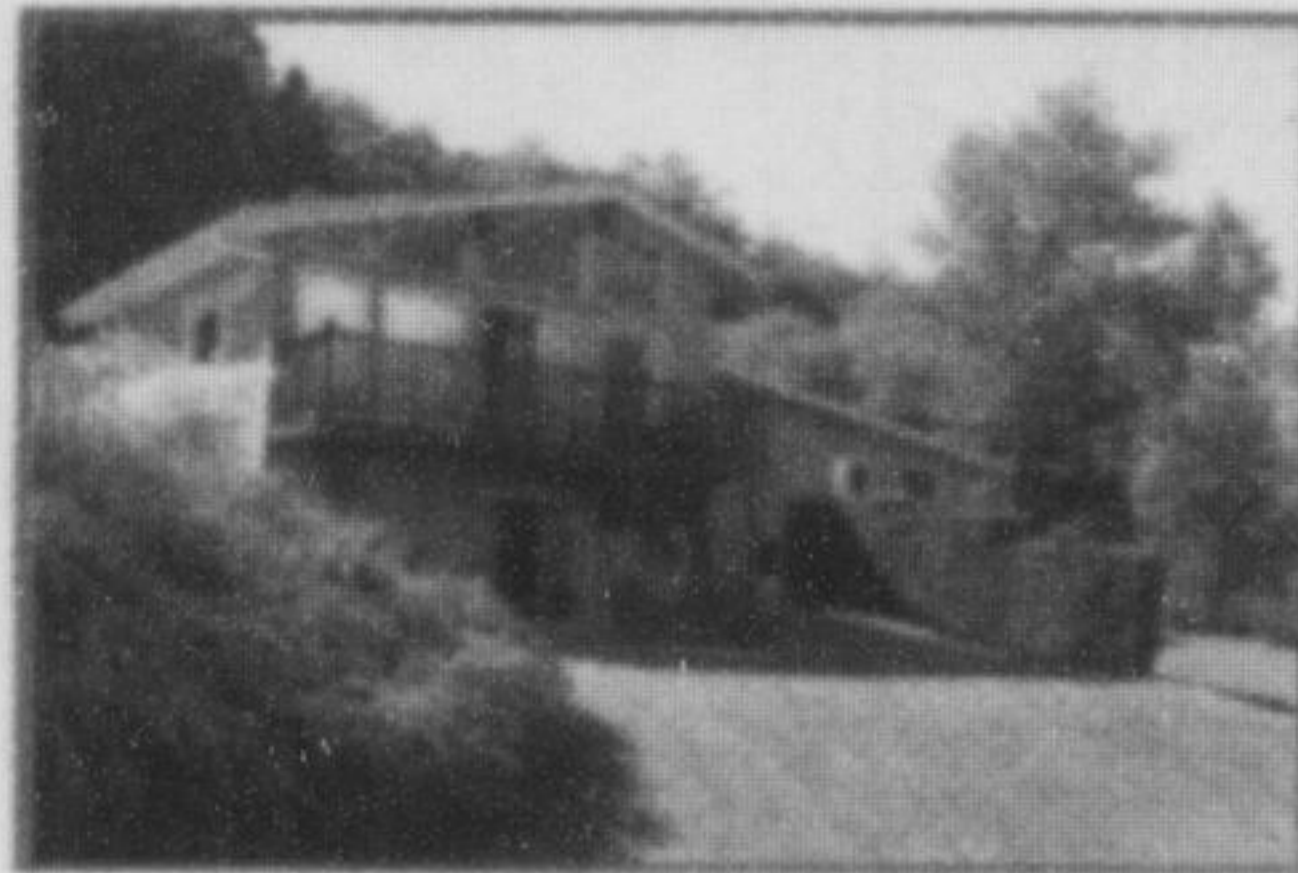
905-878-8101
475 MAIN ST. E., MILTON
www.meadowtowne.com



Carole D. Budworth*
905.864.9242
www.carolebudworth.com
Call For Your
Complimentary Home Evaluation



FABULOUS 2 PLUS ACRES



Fabulous 2 plus acres on the brow of the escarpment with spectacular views. All the bells and whistles - heated porcelain flrs, 3 FP's, many walk-outs, beautiful perennial gardens, 2 car oversized garage, circular huge driveway, cathedral ceilings, wrap around windows, decks, inground pool, hot tub. Priced to sell at \$1,099,000. Call today or visit my website at www.carolebudworth.com

HOT OFF THE PRESS



Superexecutive four bedroom brick home on sought after street in Timberlea. Appealing front porch, double garage, parking for 6 cars, rear decks. Separate dining room, formal living room, main fl. family room, new eat-in kitchen and bath, main floor pantry, laundry and den/office. Many upgrades - hardwood flooring, furnace, windows, rear door, central vac, kitchen, 2 piece bath, main staircase, wiring and panel. Priced to sell. Call Carole for a private viewing or visit my website at www.carolebudworth.com.



SUPER 4 BEDROOM TOWNHOME

in desirable area with lots to offer. Eat in kitchen with quartz counters, sep dining room and cozy living room, 4 generous bedrooms, 3 bathrooms, recent finished basement with new carpet, new paint and wainscoting create a recreation room you would love to spend your time in. Call Diane for your personal tour. Listed at \$289,900.



TOP OF THE TOWN

Looking for a great home with an awesome view, well here it is! Spacious 2 bedroom, 2 bathroom condo, overlooks downtown Milton with escarpment views. This is a rare unit w/gas fireplace 2 underground parking spots and 2 storage lockers. Close to all amenities and within walking distance to downtown. Call Diane today for your personal tour! Listed at \$339,000.



Diane Maynard
Sales Representative

Cell: 905-691-7032
Email: dianemaynard@royallepage.ca

www.royallepage.com

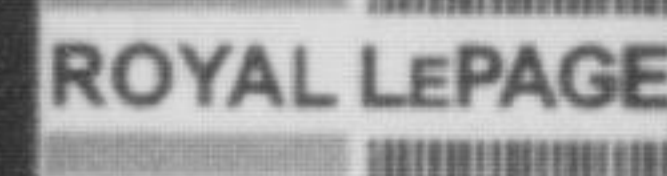
ROYAL LEPAGE
Meadowtowne Realty Inc.
Brokerage
Independently Owned and Operated

Sedgwick - Marshall

Sales Representatives



Together we serve you better!



Meadowtowne Realty
www.royallepage.ca



CREATE MEMORIES

Tucked away on almost 1/2 acre of land in the Milton core, this century home is oozing character. It boasts 5 bedrooms, 2.2 bathrooms, separate dining room, main floor laundry, a cozy country kitchen and more. A pool for summer and room to toboggan or cross country ski in winter. This house was made for christmases and family memories. To view or more information call Mirella or Mandy Priced at \$ 724,900.

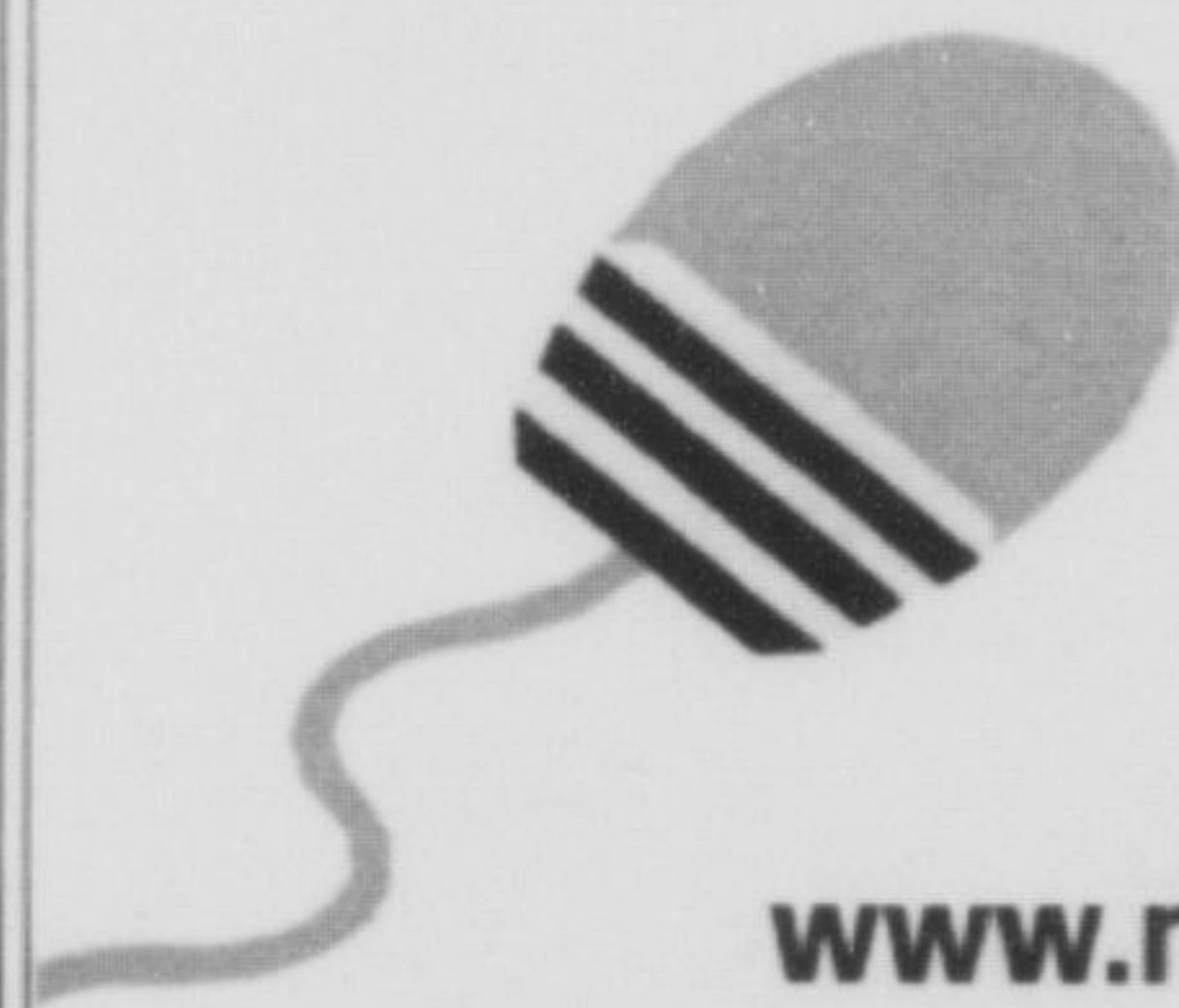


A DIAMOND IN THE ROUGH

How often does an opportunity like this present itself?? This spacious 4 bedroom century home on a 66 x 132 ft lot, located in old Milton is perfect for someone who appreciates the fine features and character of an older home. Whether you're looking for a short term investment or a long term equity building investment, this house should not be overlooked!! Priced to sell at \$519,000... call us!

Office 905.878.8101 Toll Free 1.800.514.3316
Residential - Heritage - Country - Commercial

Nobody knows a house
like a mouse!



20,000
homes.
One address
www.royallepage.ca

SELLING MILTON.CA

Sandy Del Papa 905-878-8101
Matthew Clapperton

AN ACCREDITED HOME STAGING PROFESSIONAL

ROYAL LEPAGE
SELLING MILTON FOR OVER 35 YEARS

SANDY HAS PRE-QUALIFIED FIRM BUYERS (FLEXIBLE CLOSING) LOOKING FOR

Buyer #1 2+ Bedroom Condo
383 Main Street
(Green Building)

Buyer #2 3 Storey Townhouse
661 Childs Dr. Area

Call Sandy Del Papa • 905 878 8101
if you may know of something coming on the market.



DESIRABLE CAMPBELLVILLE

Charming updated 3 bedroom on a large fenced lot in the quaint Village of Campbellville. Walking distance to shopping, restaurants and parks. Located in desirable Brookville School District.



Eva Gooding*

Sales Representative
Office 905-878-8101
Direct 905-691-2401

www.evagooding.com
evagooding@royallepage.ca



OVER-LOOKING POND

Stunning, move-in ready condo showing as 10+. Fourth floor vaulted ceiling, overlooking large pond with ultimate views. Custom built hardwood step up to breakfast bar. Gourmet kitchen with granite countertops and full height granite backsplash, stainless steel appliances, upgraded kitchen sink and facet. Both bedrooms have large windows overlooking the pond making for beautiful morning sun rises. Professionally painted, premium underpad and lighting fixtures. This unit has to be seen, will not last long! Love where you live!
Listed at \$287,900.



AWARD-WINNING BUILDER

Situated on a quiet street in the most desirable location in Hawthorne Village Vista. This plan 4 home has 9' ceilings, dark hardwood on the main floor, and a main floor office or den that is sure to appease. Large open concept eat-in kitchen with stainless appliances. Hardwood staircase leads to a second level with a master retreat including an ensuite. Two other bedrooms are more than accommodating in size. Be part of one of the most sought after family friendly neighbourhoods in Milton!
Listed for \$509,900



END UNIT

Mattamy's Mooreside townhome in Hawthorne Village. Freshly painted throughout, living/dining with hardwood floors, recently renovated kitchen with quartz counters, backsplash, undermount lighting and stainless steel appliances. Family room with a gas fireplace and a fenced in backyard with a large patio. Second level with 3 bedrooms including a master ensuite with a soaker tub. Beautifully finished basement is a bonus! Love where you live!
Listed for \$434,900



FAMILY-ORIENTED

Mattamy's Emery model on a peaceful street. Separate dining room, great room over looks eat-in upgraded kitchen with breakfast bar and garden doors to the fenced-in backyard. Second level includes a master bedroom with a walk-in closet and ensuite as well as two other bedrooms and a 4-piece bathroom, perfect for a young family. Beautiful home where quality lasts a lifetime, move-in and enjoy!
Listed for \$394,900



Sign up Today! HomeFinder.ca

- ✓ Listing
- ✓ Open Houses
- ✓ Demographics
- ✓ Agent Profiles

Contact Diane at 905-878-2341 ext 212
dianew@miltoncanadianchampion.com