



The Amy
flowers[®]
TEAM
Broker

Direct: 905-878-6232
www.AmyFlowersTeam.ca

ROYAL LEPAGE
Meadowtowne Realty, Broker
Sales Representative

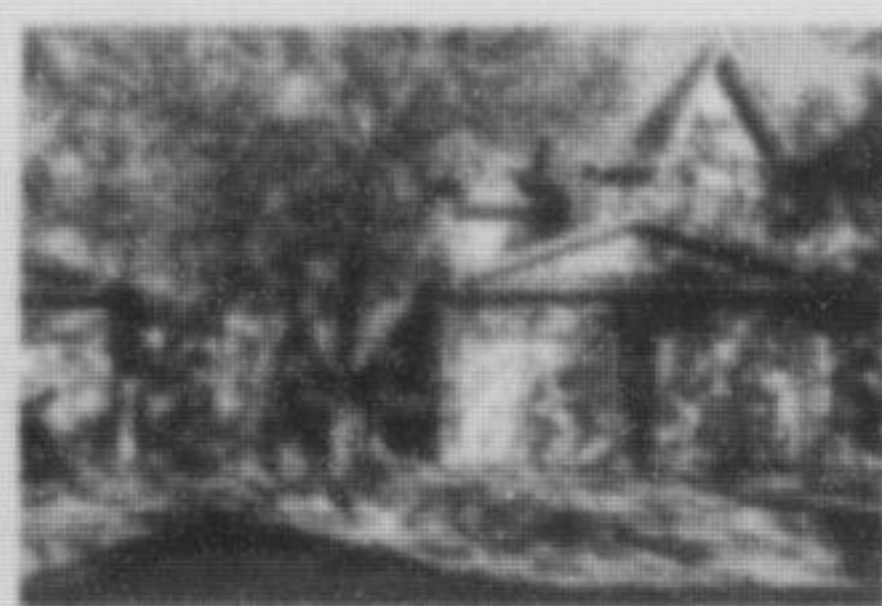
475 Main St. E. Milton
ON L9T 1R1
Office: 905-878-8101
Fax: 416-981-3559
www.AmyFlowersTeam.ca



PRESTIGIOUS HOME

Siding onto park, your backyard is truly an oasis with lush gardens & large patio. High end finishes in ever single room! 4 generous bedrooms are perfect for any sized family, all with access to ensuite baths.

\$699,900 or \$2600/month



MISSISSAUGA

Charming 3 bedroom condo townhouse on a quiet crescent. Close to schools, parks, highways and trails near the Credit Valley River. Backing onto green space for optimal privacy. Perfect for a young family.

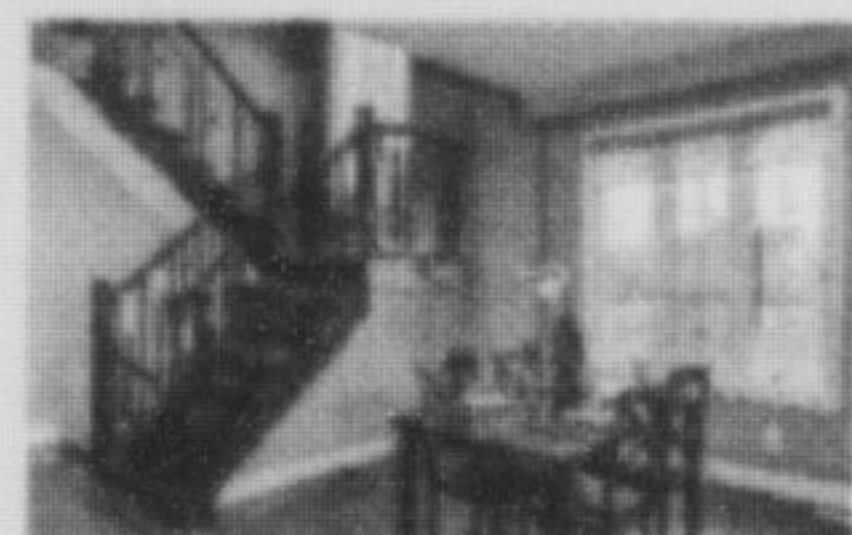
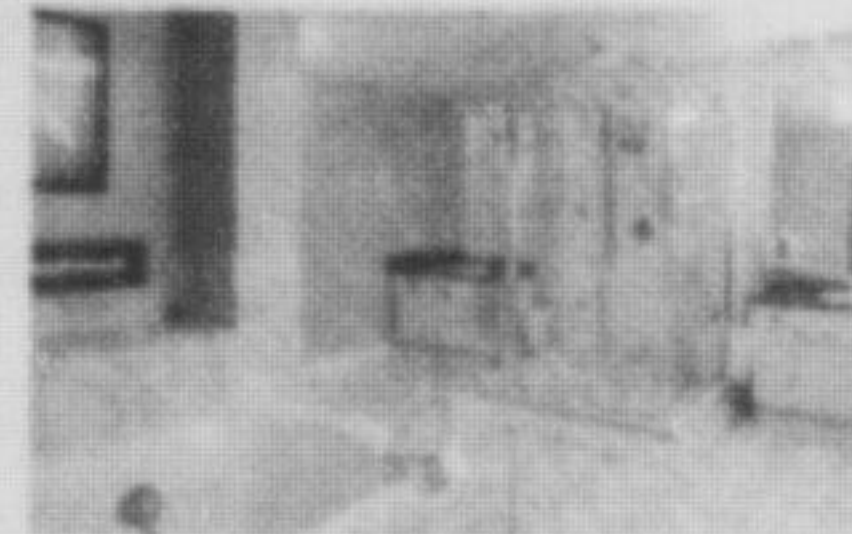
\$330,000



HOT NEW LISTING

3 bedroom family home in the desirable neighbourhood of Coates. Fronting on the park this home is perfect for any family. Double car garage, open concept layout, master ensuite & walk in closet this home is a must see!

\$419,900



FOR LEASE

1 bedroom + den condo for lease in Burlington. Walking distance to shopping, parks, and schools. Close to transit, this is perfect for any young couple or commuters. Don't miss out on this one.

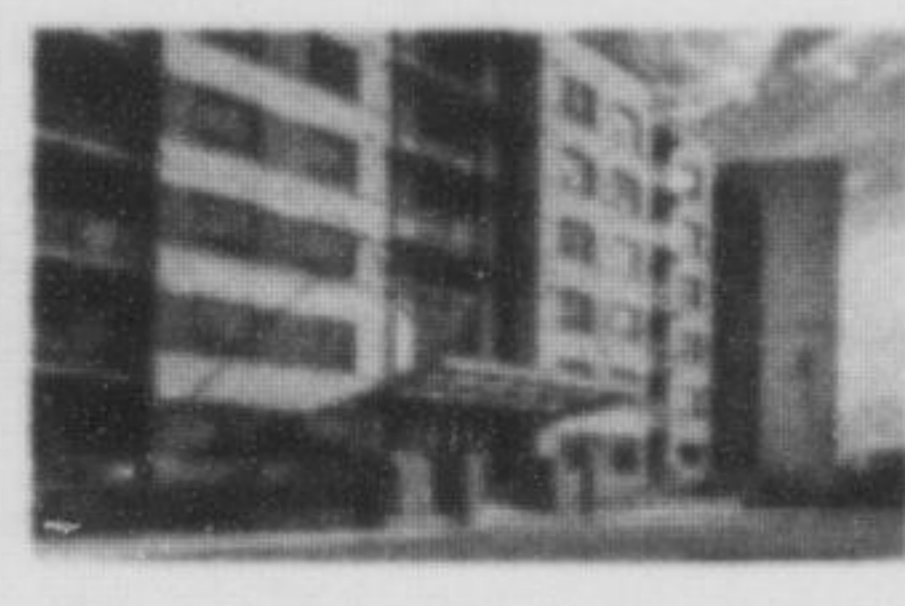
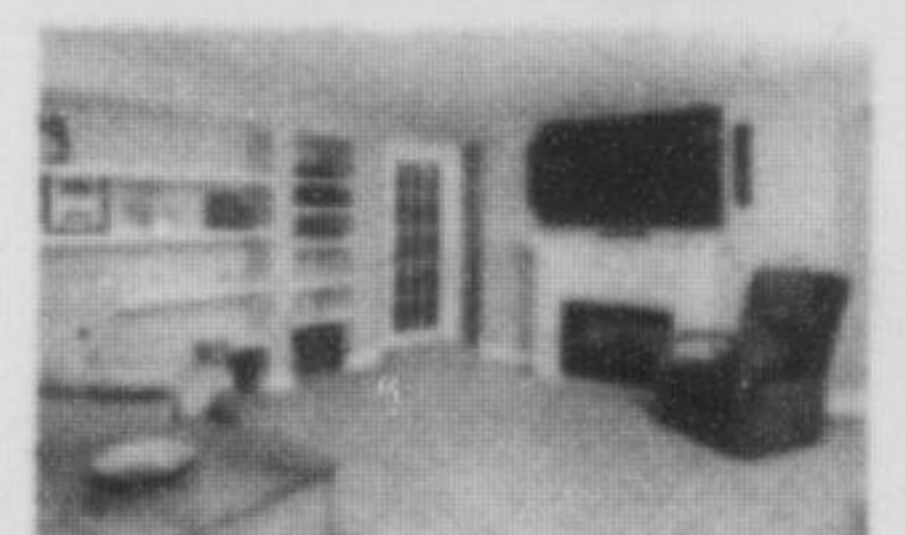
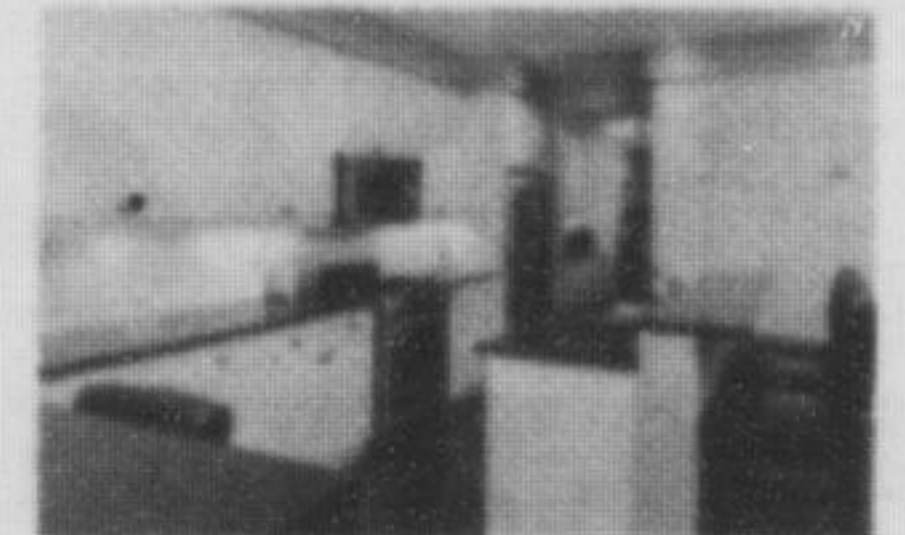
\$1500/month



OVERSIZED LOT

Loaded with upgrades this stunning Heathwood home has it all! This Cloverdale model is complete with finished basement, 9' ceilings, dark hardwood floors & California shutters. Amazing chef's kitchen will amaze you. It must be seen to be appreciated.

\$699,900



GREENLIFE CONDO

Stunning 1 bedroom + den open concept layout. Top of the line finishes including granite & crown moulding. Lowest condo fees with geothermal heating. A must see!

\$299,900

**ATTENTION
TIMBERLEA:
WE HAVE
BUYERS!!**

Our clients are thrilled to be the new owners of a fantastic Timberlea home.

We are working with several families looking to move to this exclusive neighbourhood! Call today if you are thinking of selling.

Amy Flowers*, Michelle Merritt**, Neil Maxwell**, Brett Ross **, Robin Kerwin** *Broker **Sales Representative

ROYAL LEPAGE MEADOWTOWNE REALTY



DIANE WOLSTENHOLME
Sales Representative

the Canadian
Champion

905-878-2341 ext 212
555 Industrial Drive, Milton
e-mail: dianew@miltoncanadianchampion.com

**FLYERS:
YOU EITHER LOVE THEM OR
HATE THEM.....
BUT HERE ARE THE FACTS!**

Fact 1... We can define your target market within Milton or our rural areas, and send flyers out to those homes you wish to offer your service.

Fact 2... This means that you can distribute as little as 1,000 flyers, or go to each of the 30,900 home we deliver to.

Fact 3... At a cost of only \$44 per thousand, you can promote your company in your marketing area at a cost that is very affordable for any business.

Fact 4... According to the Kubas Report marketing research study, 83% of households surveyed in Milton find flyer information sources useful in making buying decisions.

Fact 5... 75% of our readers prefer to have flyers delivered every Thursday inserted into The Canadian Champion.

Fact 6... If you want to enjoy the same response to your advertising message that our numerous regular flyer distribution customers receive, then call me. I can help you put together a program that will work best for your business or service.

Call your Canadian Champion Sales Representative
Diane Wolstenholme at 905-878-2341 ext. 212

TEAM DROHAN
A Higher Level Of Service
REAL ESTATE PROFESSIONALS
www.teamdrohan.com



363 BELL STREET
WELCOME TO OLD MILTON
This Split Level Home Backs onto a Parkland & has a Spacious Main Floor Living & Dining Area w/ Cathedral Ceilings. Boasting 5 Bdrms, 4 Bath & 2 Kitchens. The Pool & Deck Create a Vacation Paradise w/ 2 w/o's Overlooking the Mature Parkland Trees. \$595,900



661 CHILDS DRIVE, UNIT 10
IDEAL STARTER HOME
Upgraded townhome featuring hardwood floors. A spacious living room w/ high ceilings & a walkout to the upper wood deck. Dining room overlooks living area w/ a lovely view out to the backyard. \$299,900

**OPEN HOUSES
SUNDAY NOV 17TH
2-4PM**

**Come by one of our
open houses this
Sunday! Fill out a
ballot and enter to
WIN
TORONTO MAPLE
LEAF TICKETS!**



227 ELLIS CRESCENT
FANTASTIC BUNGALOF
Spacious 3 Bdrms/3 Bath Home in Milton Has Large Principal Rooms and a Beautifully Landscaped Garden Backing Onto a Pond. Centrally Placed w/ Parks, Schools, Library, Walking Trails, Shopping, Living Arts Centre & James Snow Parkway All Close By. Upgrades Incl: Hardwood Flrs, California Shutters, Breakfast Bar & Sound System T/O Main Level. \$574,900



GEORGETOWN
TOD NEW FOR PHOTO!
DETACHED 4 BEDROOM HOME
Great family home with hardwood floors on the main level, large eat in kitchen with walk-out to fully fenced backyard, master bedroom with ensuite and walk-in closet, freshly painted, neutral decor throughout, family friendly street, easy access off 8th line. Come visit us this Sunday!

A Higher Level of Service. Working Together.
Selling Your Home for the Absolute Top Dollar.
WWW.TEAMDROHAN.COM Randy's cell DIRECT: (647) 201-8446
6948 Financial Drive Mississauga Ont. L5N 8J4
ROYAL LEPAGE 100 YEARS
Meadowtowne Realty, Brokerage
Independently Owned and Operated
* Sales Representative