



MODEL FB2E2DEX

**15** THE BEST-SELLING CAR IN CANADA FOR 15 YEARS RUNNING\*

### 2013 CIVIC DX

LEASE BI-WEEKLY\* FOR 60 MONTHS<sup>9</sup> WITH \$0 SECURITY DEPOSIT. FINANCE BI-WEEKLY FOR 84 MONTHS<sup>8</sup>. \$16,970 SELLING PRICE INCLUDES FREIGHT, PDI, LEVIES AND OMCVIC FEE. EXCLUDES LICENSE AND HST.

**\$88@1.99%** APR  
**\$0 DOWN PAYMENT** OAC

### 2013 FIT DX

**\$77@1.99%** APR

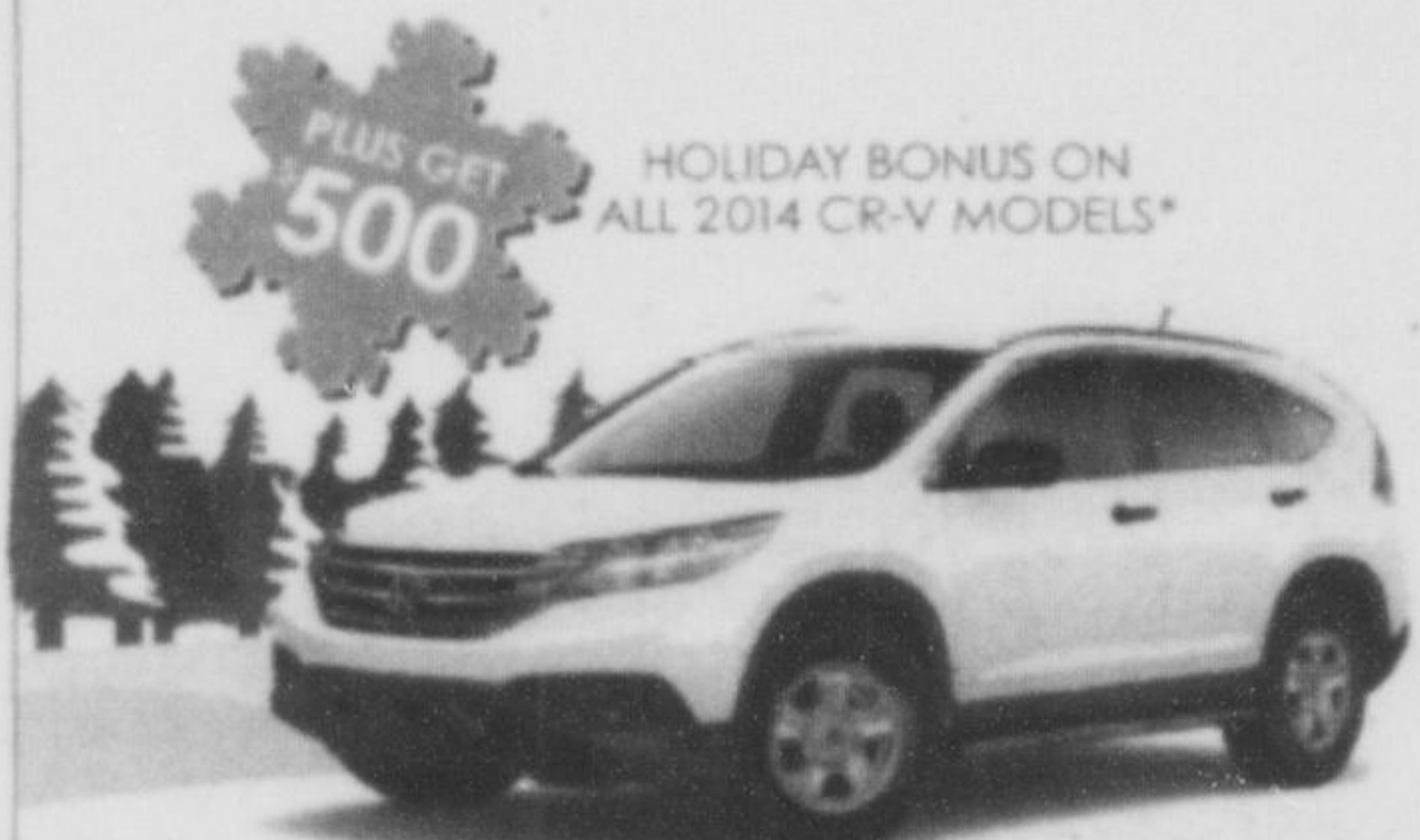
**PLUS GET \$500** HOLIDAY BONUS ON ALL 2013 FIT MODELS\*

**\$1,430 DOWN PAYMENT/OAC**  
LEASE BI-WEEKLY\* FOR 60 MONTHS<sup>9</sup>  
WITH \$0 SECURITY DEPOSIT.

Named one of Car and Driver's 10Best for the 7th year in a row.



MODEL GF8G2DEX



MODEL RM3H3EES WITH SE ACCESSORY PACKAGE

\*BI-WEEKLY LEASE ONLY AVAILABLE FOR 48 MONTH TERMS OR GREATER.

OR GET GREAT DEALS ON OTHER 2013 MODELS

**0.99%** APR

OR GET UP TO

**\$5000**

LEASE FOR 24 MONTHS\* OR FINANCE UP TO 48 MONTHS\* ON SELECT 2013 HONDA MODELS.

CASH INCENTIVES ON OTHER SELECT REMAINING 2013 HONDA MODELS.



HondaOntario.com  
Ontario Honda Dealers



Limited time lease and finance offers available through Honda Financial Services Inc. (HFS) on approved credit. Selling prices and payments include freight and PDI (ranges from \$1,495 to \$1,840 depending on 2013 model and \$1,895 on advertised 2014 models), EH1 fees (\$29), EH2 fees (\$31), A/C levy (\$100 except Civic DX and Fit DX models), and OMCVIC fee (\$5). Taxes, license, insurance, registration, and excess wear and tear are extra. <sup>2</sup>Representative bi-weekly lease example: 2013 Civic DX Sedan // 2014 CR-V LX 2WD on a 60 month term with 130 bi-weekly payments at 1.99% // 2.99% lease APR. Bi-weekly payment is \$48 // \$139 with \$0 // \$1,177 down or equivalent trade-in. \$66 // \$0 individual dealer contribution deducted from the negotiated selling price before taxes, \$0 security deposit, and first bi-weekly payment due at lease inception. Total lease obligation is \$11,430.71 // \$19,247.00. 120,000 kilometre allowance, charge of \$0.12/km for excess kilometres. PPSA lien registration fee of \$45.93 and lien registering agent's fee of \$5.05, due at time of delivery are not included. Limited time SE Accessory Package installed for \$4.88 more bi-weekly (plus taxes) on a 2014 CR-V LX 2WD includes all advertised items plus "SE" badge. <sup>1</sup>Representative bi-weekly finance example: 2013 Civic DX Sedan on a 84 month term with 182 bi-weekly payments at 1.99% APR (including \$1,600 Finance incentive and \$476.85 individual dealer contribution deducted from the negotiated selling price before taxes). Incentives apply only to Finance contracts through HFS, and can be combined with subvented rates of interest offered by Honda as part of a low rate interest program. Finance amount is \$14,839. Cost of borrowing is \$1,077.28 for a total finance obligation of \$16,016.28 with \$0 down or equivalent trade-in. <sup>3</sup>\$500 Holiday Bonus offer applies only to retail customer purchase or lease agreements for new 2013 Civic, 2013 Fit and 2014 CR-V models concluded between November 1st, 2013 and December 2nd, 2013 at participating Ontario Honda Dealers. Deducted from the negotiated price after taxes and can be combined with advertised lease and finance rates. <sup>4</sup>Limited time 0.99% APR lease offers on remaining new 2013 Fit DX // 2013 Civic DX Sedan // 2013 CR-V // 2013 Accord EX Coupe 6MT // 2013 Accord LX Sedan 6MT // 2013 CR-V LX 2WD for a maximum of 24 // 24 // 24 // 42 // 24 // 36 months. Representative lease example: 2013 Civic DX Sedan on a 24 month term at 0.99% lease APR, the monthly payment is \$287.20 with \$0 down or equivalent trade-in, \$0 security deposit and first monthly payment due at lease inception. Total lease obligation is \$6,892.80. 48,000 kilometre allowance, charge of \$0.12/km for excess kilometres. PPSA lien registration fee of \$18.81 and lien registering agent's fee of \$5.05, due at time of delivery are not included. <sup>5</sup>Receive 0.99% APR purchase financing on remaining new 2013 Fit DX // 2013 Civic DX Sedan // 2013 CR-V // 2013 Accord EX Coupe 6MT // 2013 Accord LX Sedan 6MT // 2013 CR-V LX 2WD models for a maximum of 36 // 40 // 24 // 60 // 24 // 48 months. Representative finance example: 2013 Civic DX Sedan on a 24 month term at 0.99% APR and finance amount of \$17,037.36 the monthly payment is \$716.32. Cost of borrowing is \$176.22 for a total finance obligation of \$17,213.52 with \$0 down or equivalent trade-in. <sup>6</sup>\$1,500 // \$1,500 // \$2,000 // \$1,500 // \$2,000 // \$2,000 // \$2,500 // \$4,000 // \$5,000 // \$5,000 customer cash incentive is valid on remaining new 2013 Fit (except DX) // 2013 Civic Coupe and Sedan (except DX Sedan) // 2013 Accord Coupe (except LX Coupe 6MT) // 2013 Accord Sedan (except LX Sedan 6MT, EX-L V6 Sedan and Touring V6 Sedan) // 2013 Accord EX-L V6 Sedan and Touring V6 Sedan // 2013 Crosstour EX 2WD and EX-L 2WD // 2013 Crosstour EX-L 4WD and EX-L 4WD NAVI // 2013 CR-V (except LX 2WD) // 2013 Odyssey // 2013 Pilot // 2013 Ridgeline models when registered and delivered between November 1st and December 2nd, 2013. Cash incentive is available for all Honda retail customers except customers who lease or finance through HFS at a subvented rate of interest offered by Honda as part of a low rate interest program. All advertised lease and finance rates are special rates. Cash incentive will be deducted from the negotiated price before taxes. For all offers, taxes payable on full amount of purchase price. Offers only valid for Ontario residents at Ontario Honda Dealers. Dealer may sell/lease for less. Dealer order/trade may be necessary. Vehicles and accessories are for illustration purposes only. Offers, prices and features subject to change without notice. See your Ontario Honda Dealer or visit HondaOntario.com for full details. <sup>7</sup>Based on Association of International Automobile Manufacturers of Canada (AIAC) data including sales between 1997 and December 2012.

**Mark's Work Wearhouse**

**LOOK ... for your Mark's Work Wearhouse Flyer in Today's Canadian Champion!**

Milton Crossroads • 1220 Steeles Ave E. • 905-878-6163

**JAMES SNOW ANIMAL HOSPITAL**  
Quality Veterinary Care. Affordable Prices.

- Vaccinations
- Microchips
- Spay/Neuter
- Dentistry
- Surgeries
- Grooming
- Digital X-ray
- Monitoring
- Companion Lab Tests
- Heart, Urine and
- Prostatic Fluid
- Emergency Medical Services

**GRAND OPENING**  
50% DISCOUNT ON EXAM FEE  
10% DISCOUNT ON SURG & TREATERS

**OPEN 7 DAYS**

Call : 905-864-9909  
Fax: (905) 864-9905

11 James Snow Parkway, Unit #71, Milton, ON L7T 0R2

**LOOK FOR YOUR James Snow Parkway Animal Hospital Flyer in today's the Canadian CHAMPION (Select areas only)**

Don't miss these, and other great deals!

Visit **WagJag.com** Proudly Canadian

Follow us:  
@wagjag  
facebook.com/wagjag

**Buy Online:** 50% off **\$5.00**

\$5 FOR \$10 TOWARDS THAI AND VIETNAMESE CUISINE AT POMELO

**AHC**

**Buy Online:** 44% off **\$45.00**

UP TO 50% OFF CELSIUS HYDROTHERAPY SESSIONS FROM AHC (2 OPTIONS)

**Buy Online:** 51% off **\$39.00**

UP TO 50% OFF MASSAGE SERVICES, FOOT REFLEXOLOGY TREATMENTS AND MORE FROM BE PAMPERED SPA (3 OPTIONS)

Brought to you by: Burlington Post, Champion, Flamborough Review, Oakville Beaver, metrolandmedia

How to buy a WagJag: 1. Go to www.wagjag.com 2. Click buy on the offer and follow the instructions. 3. Receive your deal, tell your friends and enjoy!