

**BIG LOT  
BIG HOME  
BETTER VALUE**

**ONLY A FEW 30' LOTS REMAIN**

WHY BUY A NEW TOWNHOUSE WHEN YOU CAN BUY A NEW **SINGLE FAMILY HOME?**



**SINGLE FAMILY HOMES**  
ON 30', 40', 50' & 55' LOTS  
STARTING FROM THE  
**\$290's**



**STRATHLEA**  
*Fergus*

VISIT OUR 2 DESIGNER DECORATED MODEL HOMES TODAY!

**Call Now!**  
**519.994.4800**

Or Visit  
**mystrathlea.com**

**PRESENTATION CENTRE**  
Mon., Thurs. & Fri. 1-7pm  
Saturday & Sunday 12-5pm  
Tuesday & Wednesday CLOSED

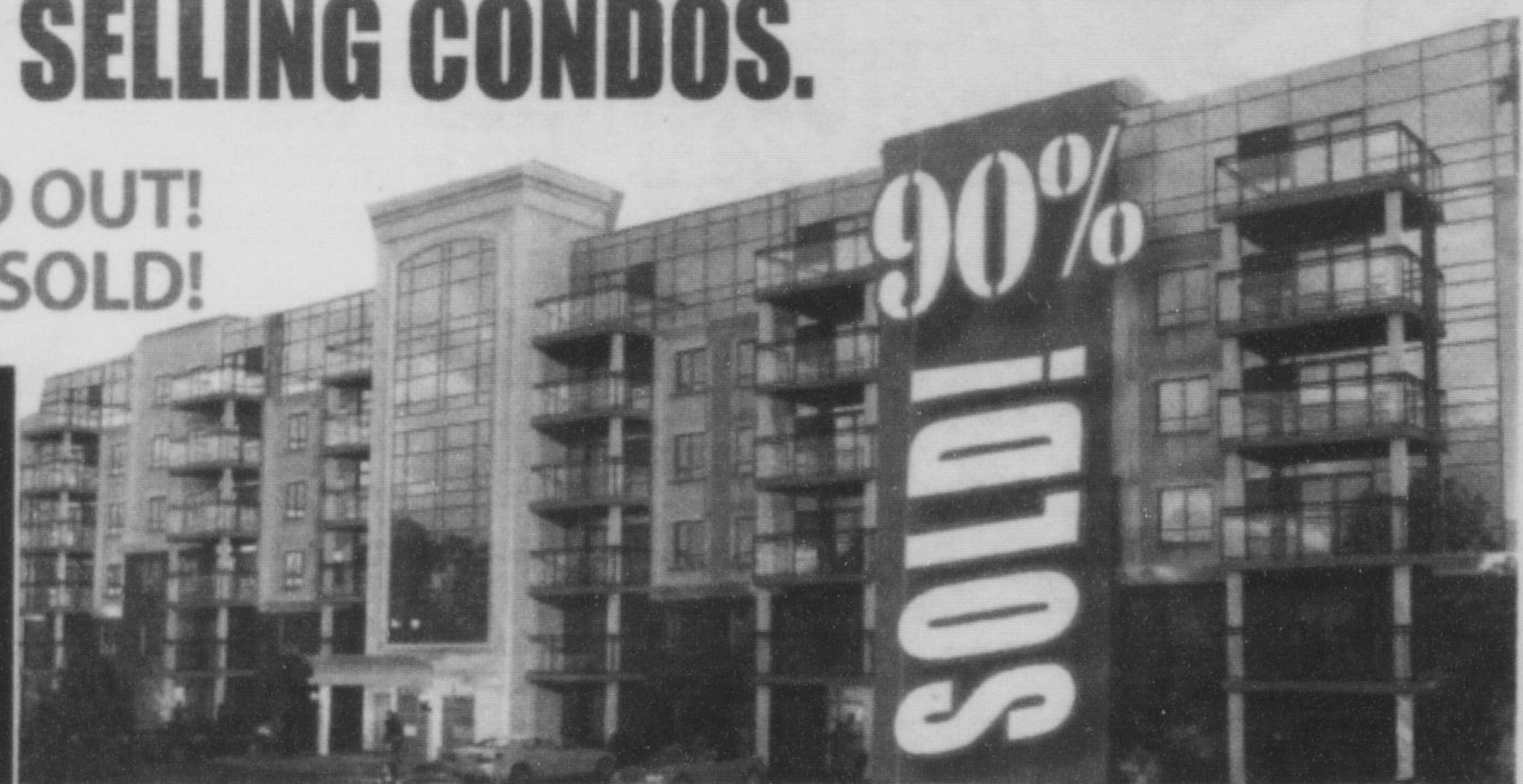


Dimensions and prices are subject to change without notice. E. & O.E. October 2013



**MILTON'S TOP SELLING CONDOS.**

- BUILDING 2 SOLD OUT!
- BUILDING 3 90% SOLD!



**CHOICE UNITS AVAILABLE!**  
**MOVE IN 60 DAYS!**

Call: 289-878-7813

MAKE IT YOURS FROM THE MID  
**\$200's**

- QUALITY UPSCALE FINISHINGS
- PARKSIDE LIVING • FITNESS ROOM
- INNOVATIVE DESIGNS
- STYLISH LOBBY LOUNGE
- REFRESHING BREEZE WAY

**HOURS:**  
Sat., Sun. 11-5pm • Mon-Thurs 2-8 pm.  
Friday by appointment



**REGISTER NOW!**



**valeryhomes.com**