



The Amy  
**flowers**  
TEAM

Direct: 905-878-6232  
www.AmyFlowersTeam.ca

**ROYAL LEPAGE**  
Meadowtowne Realty

475 Main St. E. Milton  
ON L9T 1R1  
Office: 905-878-8101  
Fax: 416-981-3559  
www.AmyFlowersTeam.ca



**PRESTIGIOUS HOME**

High end finishes in every room this home is a must see. Siding onto park, your backyard is truly an oasis with lush gardens & large patio. 4 generous bedrooms are perfect for any sized family, all with access to ensuite baths.

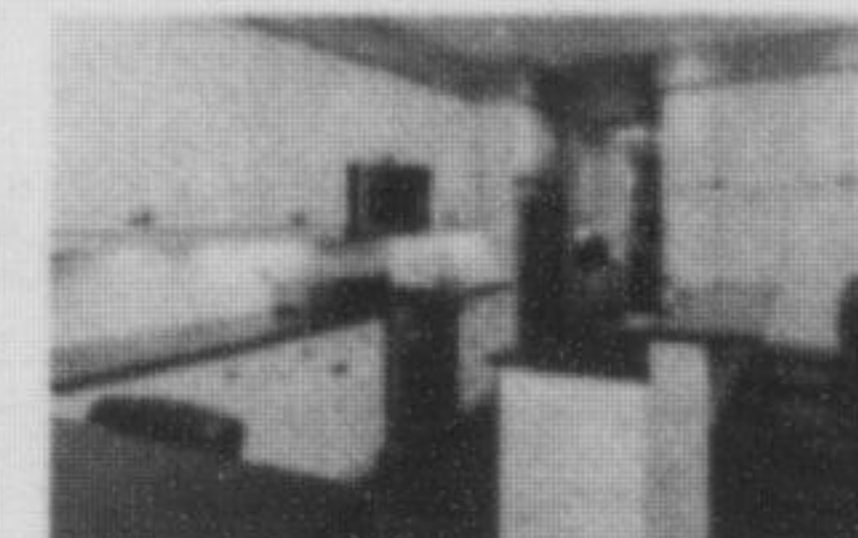
**\$699,900 or \$2600/month**



**GORGEOUS HOME**

Loaded with upgrades this stunning Heathwood home has it all! This Cloverdale model is complete with finished basement, 9' ceilings, dark hardwood floors & California shutters. Amazing chef's kitchen will amaze you. It must be seen to be appreciated.

**\$699,900**



**GREENLIFE CONDO**

Stunning 1 bedroom + den open concept layout. Top of the line finishes including granite & crown moulding. Lowest condo fees with geothermal heating. A must see!  
**\$299,900**



**MISSISSAUGA**

Charming 3 bedroom condo townhouse on a quiet crescent. Close to schools, parks, highways and trails near the Credit Valley River. Backing onto green space for optimal privacy. Perfect for a young family.

**\$339,900**



**CONDO LIVING**

1 bedroom + den by Greenlife located in beautiful downtown Milton. Gourmet kitchen has granite counters, stainless steel appliances & maple cabinets. Ensuite laundry, balcony, underground parking & storage locker all included.

**\$345,000**

**ATTENTION TIMBERLEA:  
WE HAVE BUYERS!!**

Our clients are thrilled to be the new owners of a fantastic Timberlea home.

We are working with several families looking to move to this exclusive neighbourhood! Call today if you are thinking of selling.

Amy Flowers\*, Michelle Merritt\*\*, Neil Maxwell\*\*, Brett Ross \*\*, Robin Kerwin\*\* Broker \*\*Sales Representative

**ROYAL LEPAGE MEADOWTOWNE REALTY**

Nobody knows a house  
like a mouse!



20,000  
homes.  
One address  
www.royallepage.ca

**Adina Nonis**

WORKING HARD TO BUILD LONG LASTING RELATIONSHIPS



Direct:  
416-721-1311

www.adinanonis.com

PROUD SPONSOR OF THE WOMEN'S SHELTER FOUNDATION



**FANTASTIC HOBBY FARM/INVESTMENT WITH 1000 SQF WORKSHOP**

10 Acre country property/hobby farm. 10 beautiful newly cleared acres located on Guelph line north of North. Wood bridge, a beautiful 3 bedroom 2 story home with lots of character and charm. Property features a large heated 1000 sqf workshop with a tall large bay door, large barn with horse stalls. Call me to view or for additional information.



**RARE CORNER TOWNHOUSE WITH DOUBLE CAR GARAGE**

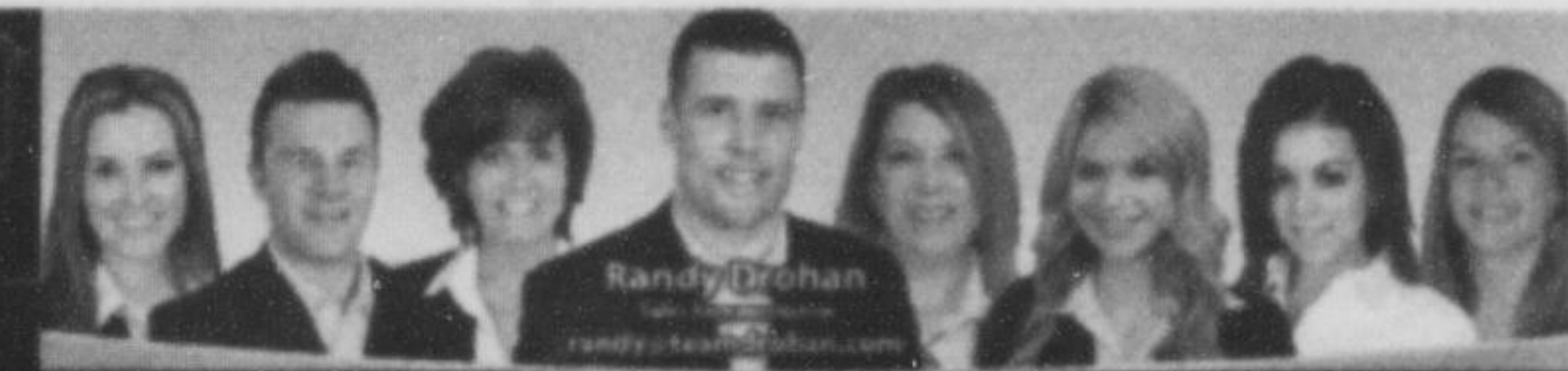
Fantastic 3 story townhouse with approx 1900 sqf of living space on a large corner lot. Minutes to all amenities and Hwy. Finished basement and a large wood deck off kitchen. Call me to view.

PLEASE CALL ME IF YOU ARE THINKING OF SELLING OR KNOW OF ANYONE THAT MAY BE.

**TEAM DROHAN**  
A Higher Level Of Service

REAL ESTATE PROFESSIONALS

www.teamdrohan.com



**WELCOME TO OLD MILTON**

This split level home backing onto parkland has a spacious main floor living and dining area with cathedral ceilings. Boasting 5 bdrms, 4 bath and 2 kitchens. The pool and deck is like a vacation paradise with 2 w/o's overlooking the mature trees in the parkland.



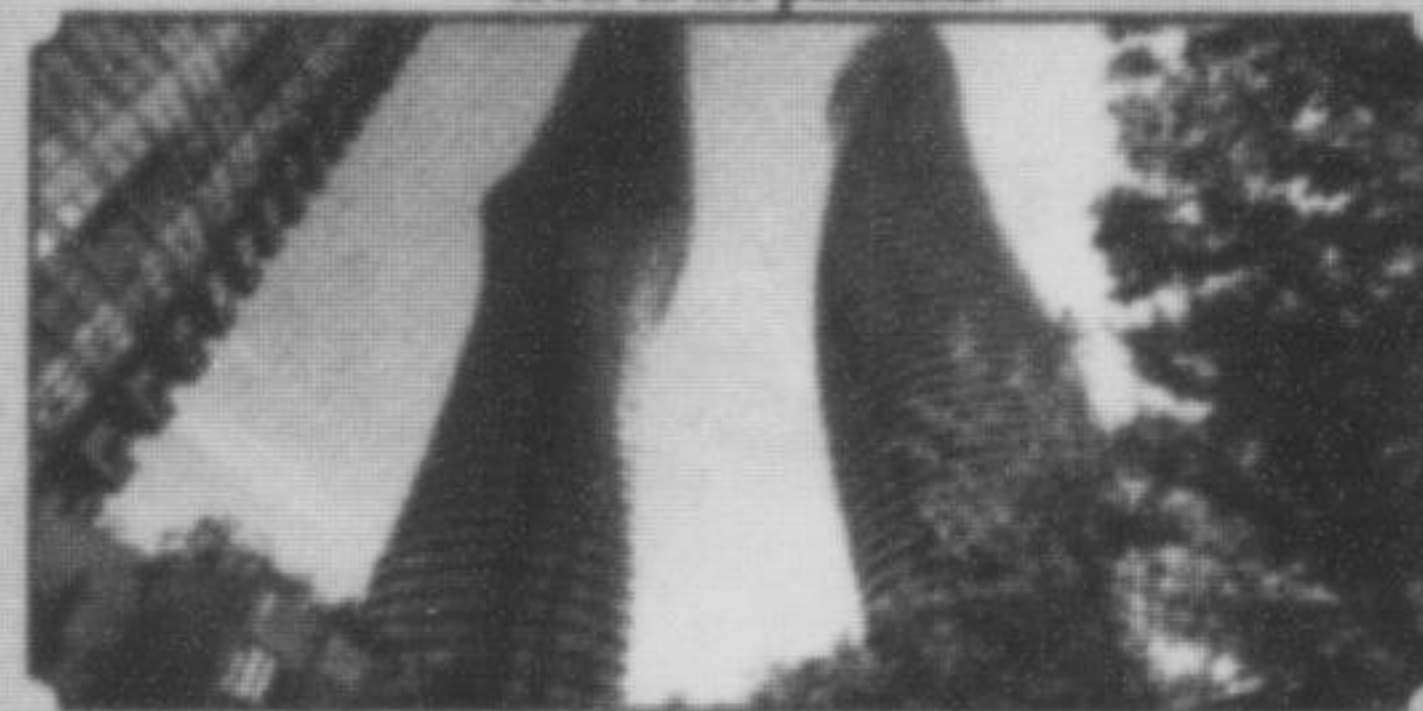
**CLASSIC HOME**

Located in S/E Oakville, this beautiful home boasts of charm and elegance. Custom millwork, hardwood floor, eat-in kitchen. A true cooks delight w/ granite counter tops, S/S apps, gas cooktop, huge open gable truss beam family room. Don't miss this opportunity!



**PERFECT FOR ENTERTAINING**

Located in a mature family neighbourhood this home offers an excellent layout with 4 oversized bdrms, separate family rm with cozy wood burning fireplace and hrdwd fls. Large eat-in kitchen w/ w/o to a gorgeous 2 level deck and beautiful private backyard



**LUXURY CONDO**

Fantastic 2 bdrm condo in the famous Marilyn Monroe building! Fabulous views w/ wall to wall windows and a large 240 sq foot wrap-around balcony. Open concept with 9ft ceilings and rich dark flooring throughout. Upgraded kitchen with granite and backslash.



**IDEAL STARTER HOME**

Upgraded townhome featuring hardwood floors. Spacious living room with high ceilings & walkout to upper wooden deck. Dining room overlooks living room with a lovely view out to backyard



**FANTASTIC FAMILY HOME**

This home has superb spacious layout with lots of natural light, feat: hrdwd flrs on the main level, with w/o to bktyrd with oversized patio drs to a beautifully landscaped bcktyrd w/mature trees



A Higher Level of Service, Working Together,  
Selling Your Home for the Absolute Top Dollar

WWW.TEAMDROHAN.COM Randy's cell DIRECT: (647) 201-8446



6948 Financial Drive Mississauga Ont. L5N 8J4

\* Sales Representative