



The Amy
flowers
TEAM

Direct: 905-878-6232
www.AmyFlowersTeam.ca

ROYAL LEPAGE

475 Main St. E. Milton
ON L9T 1R1
Office: 905-878-8101
Fax: 416-981-3559
www.AmyFlowersTeam.ca



PRESTIGIOUS HOME

Heathwood's Somerset model sides onto family park. 4 bedrooms all with access to ensuite. Amazing modern kitchen with glass backsplash & high end appliances. Backyard is your own oasis complete with interlock deck.

\$699,900



GORGEOUS HOME

Loaded with upgrades this stunning Heathwood home has it all! This Cloverdale model is complete with finished basement, 9 ceilings, dark hardwood floors & California shutters. Amazing chef's kitchen will amaze you. It must be seen to be appreciated.

\$699,900



HUGE FAMILY HOME

Beautifully maintained 4 bedroom family home located close to all amenities. Gorgeous hardwood throughout. Stunning kitchen complete with granite, stone backsplash & built in appliances. Professionally landscaped lush gardens.

\$669,900



AMAZING HOME

Parking for 4 cars in long driveway. Custom designed kitchen with ample counter space. Dark contemporary floors. Finished basement with plenty of storage. Fully fenced yard has deck with pergola. Ready for you move in!

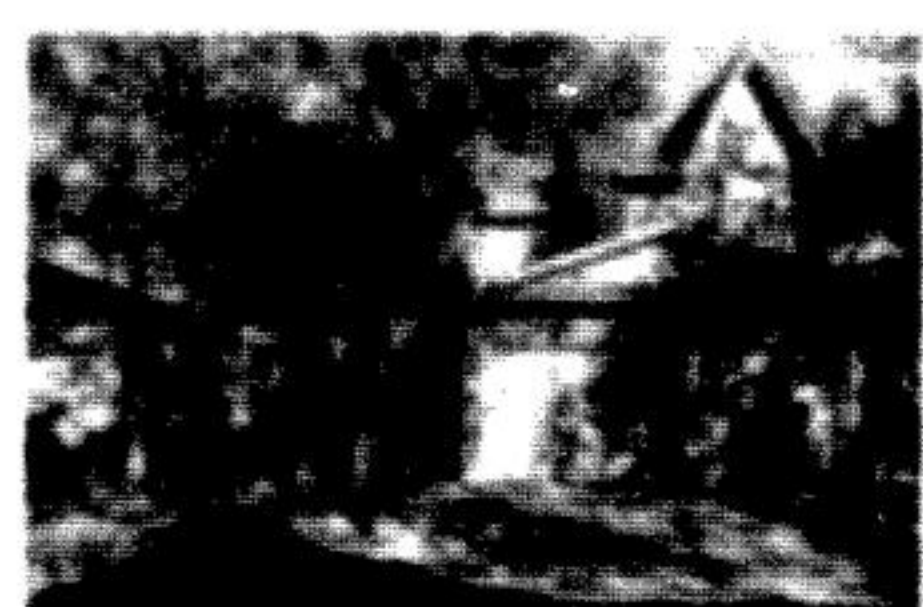
\$425,000



GREENLIFE CONDO

Stunning 1 bedroom + den open concept layout. Top of the line finishes including granite & crown moulding. Lowest condo fees with geothermal heating. A must see!

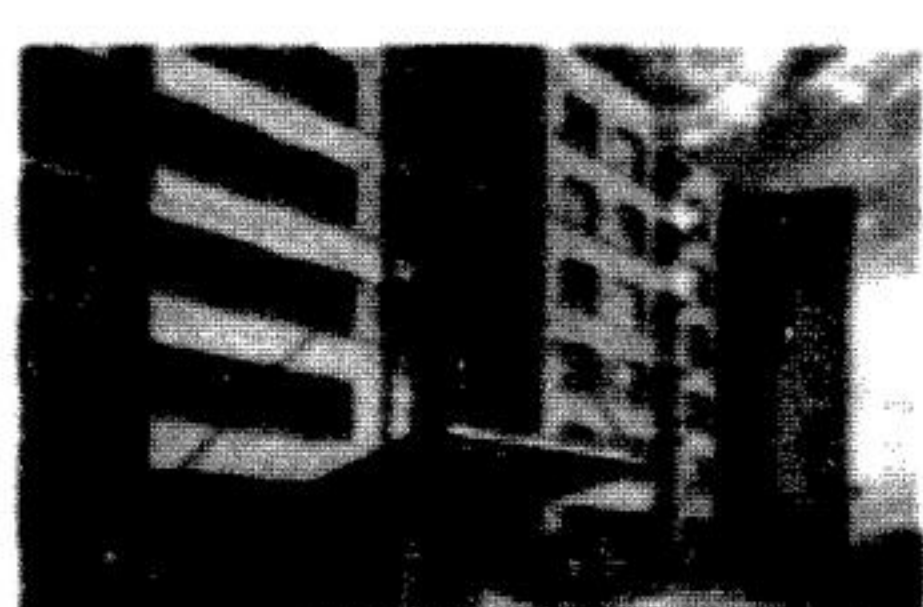
\$299,900



MISSISSAUGA

Charming 3 bedroom condo townhouse on a quiet crescent. Close to schools, parks, highways and trails near the Credit Valley River. Backing onto green space for optimal privacy. Perfect for a young family.

\$339,900



CONDO LIVING

1 bedroom + den by Greenlife located in beautiful downtown Milton. Gourmet kitchen has granite counters, stainless steel appliances & maple cabinets. Ensuite laundry balcony, underground parking & storage locker all included.

\$345,000



Exclusive Listings
&
Early Access

facebook.com/theamyflowersteam

Amy Flowers*, Michelle Merritt**, Neil Maxwell**, Brett Ross**, Robin Kerwin**

ROYAL LEPAGE MEADOWTOWNE REALTY

What costs are associated with purchasing a home?

Some of the most common expenses are listed here. These expenses may vary, depending on your area.

At time of Application:

Mortgage application and appraisal fee
House inspection (optional)

Closing:

- Legal fees
- Legal disbursements
- Deed and/or mortgage registration
- Property Survey
- Land Transfer Taxes by Province
- Property Tax Adjustments
- Fuel Adjustments
- Mortgage Insurance
- Title Insurance

Provided by www.royallepage.ca

TEAM DROHAN

REAL ESTATE PROFESSIONALS



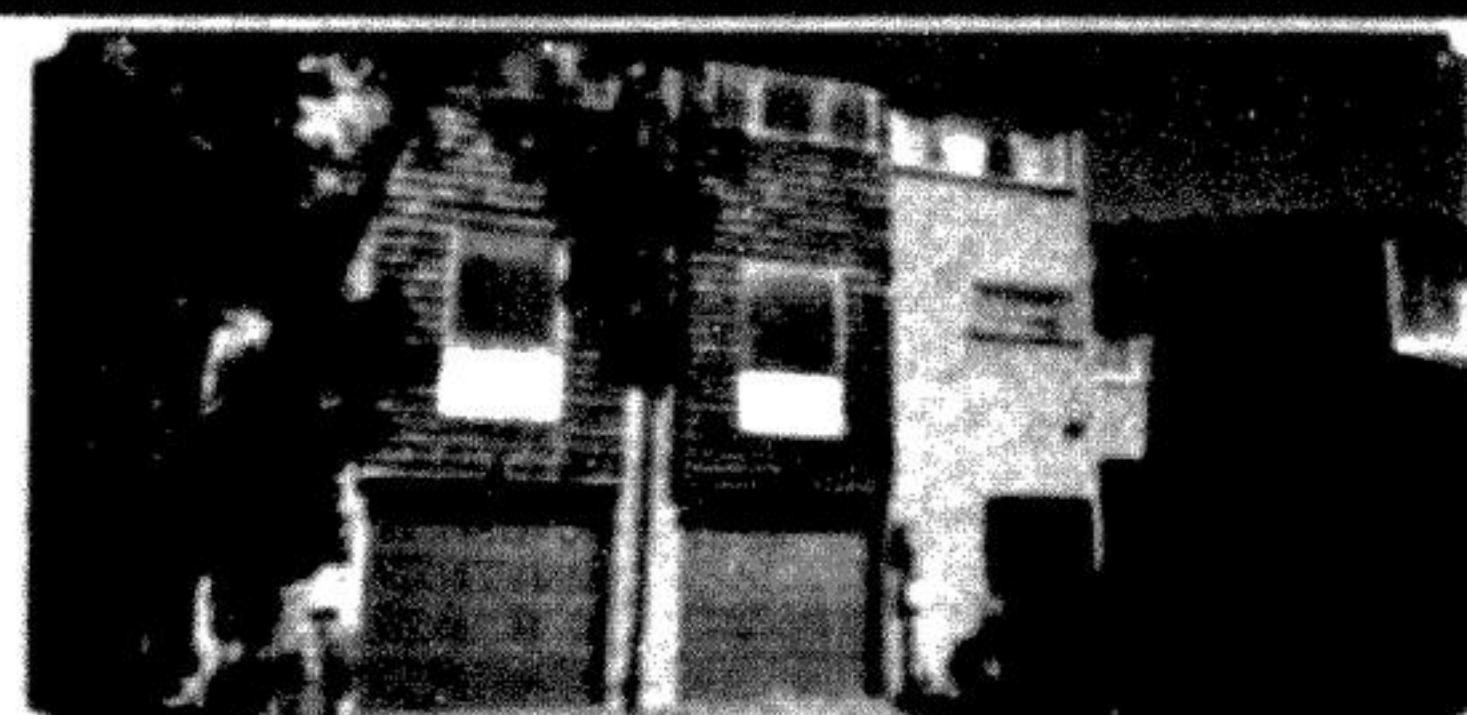
FANTASTIC FAMILY HOME

This home has superb spacious layout with lots of natural light. Feat hrdwd flrs on the main flr w/W/O to bcktyrd w/oversized patio drs to a beautifully landscaped bcktyrd w/mature trees..



DORSET PARK

Spotless 3 Bedroom Backsplit in Dorset Park with Professionally landscaped gardens. Double Car Garage with Ample parking, upgraded kitchen with quartz countertops. A must see!



PERFECT STARTER HOME

Upgraded townhome featuring hardwood floors, spacious living room with high ceiling & walkout to upper wooden deck. Dining room overlooks living room with lovely view out to backyard.



LUXURY FINISHES

Stunning 4 bedroom home with high end upgrades from top to bottom. Oversized premium lot, professionally landscaped with great entertainers deck. Don't miss out, call today for your private tour



GREAT LOCATION

Nestled in desirable West Oak Trail neighborhood on a quiet child friendly street. Extremely well maintained home offers dark hardwood floors and a wonderful spacious layout

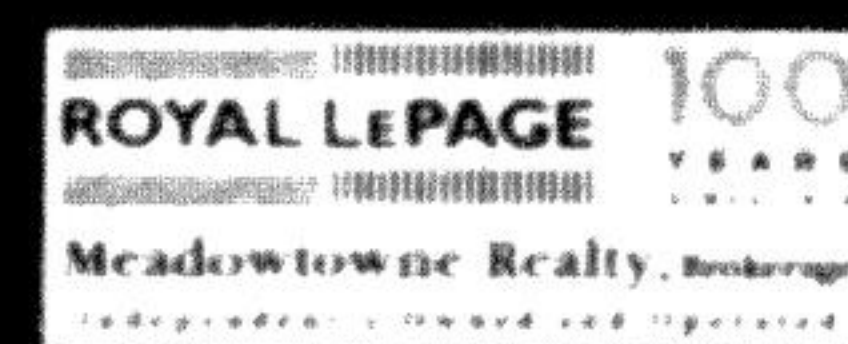


NEW LISTING

Fantastic 2 bedroom condo in the famous Marilyn Munroe building. This condo is full of upgrades - with 240 feet of wrap around balcony, wall to wall windows with awesome views



WWW.TEAMDROHAN.COM Randy's cell DIRECT: (647) 201-8446



6948 Financial Drive Mississauga Ont. L5N 8J4

* Sales Representative