



**Special Friends fun**

At left, Milton's Liam Reid, 7, has a blast as he heads down the giant inflated slide with volunteer Mitch Mele at the Halton Regional Police Special Friends Day. Inset, seven-year-old Jamieson Bonk of Milton shows her excitement at sinking a putt. For more photos, see a gallery at [insidehalton.com](http://insidehalton.com).

*Graham Paine / Canadian Champion (Follow on Twitter @halton\_photog)*



**Public Information Centre  
Wednesday, June 19, 2013 from 6 to 8 p.m.  
Removal of Policy 3.32  
(Milton Special Policy Area – Interim Policy)**

Conservation Halton will be hosting a Public Information Centre regarding the removal of Policy 3.32 (Milton Special Policy Area – Interim Policy), which pertains to the portion of the Central Business (Downtown) District of Milton within the Regional Storm Floodplain. A map and street addresses of properties impacted by this are listed on Conservation Halton's website.

The Policy 3.32 can be found within the document, "Policies and Guidelines for the Implementation of Ontario Regulation 162/06 and Land Use Planning Document" (August 11, 2011), on Conservation Halton's website, [www.conservationhalton.ca](http://www.conservationhalton.ca).

**Public Information Centre  
Removal of Policy 3.32 (Milton  
Special Policy Area – Interim Policy)**

- Wednesday, June 19, 2013 from 6 to 8 p.m.
- Format: drop-in session
- Conservation Halton Administration Office
- 2596 Britannia Road West, Burlington, Ontario
- (office is located on Britannia Road West, just west of Guelph Line in Lowville)

**For any inquiries, please contact Jennifer Lawrence, Manager, Environmental Planning**  
Phone: 905-336-1158 ex. 266  
E-mail: [jlawrence@hrca.on.ca](mailto:jlawrence@hrca.on.ca)

This notice first published on May 28, 2013.



This mapping was produced by Conservation Halton and should be used for information purposes only. Data sources used in its production are of varying quality and accuracy and all boundaries should be considered approximate. Please contact Conservation Halton to verify the information for your property. This map is protected by copyright (© 2013). Produced by Conservation Halton under license with Town of Milton and Ontario Ministry of Natural Resources. Copyright © Queens Printer 2013

**MILTON HYUNDAI**

OVER 300 PRE-OWNED VEHICLES AVAILABLE!

**MANAGER'S SPECIAL OF THE WEEK**



**2007 TOYOTA SIENNA XLE AWD**

LOADED XLE LIMITED AWD!! This beautiful Sienna XLE is loaded with - Navigation, DVD Entertainment System, Leather Seating, Heated Seats, Power Sunroof, Power Windows/Locks/Mirrors, Dual Power Sliding Doors, Power Rear Tailgate, Alloy Wheels, Climate Control A/C, Rear A/C, Front/Side/Curtain Airbags, ABS Braking System, Traction Control, Fog Lights, Roof Rack, Rear Privacy Glass & much more!!

Stk# 000626

**\$17,988 PLUS HST & LIC**

**2011 BMW 535I AWD**



Stk# 266641

**\$40,988 PLUS HST & LIC**

**2012 MINI COOPER**



Stk# Y25437

**\$26,988 PLUS HST & LIC**

**2010 AUDI A4 QUADRO**



Stk# 009181

NEW PRICE

**\$26,988 PLUS HST & LIC**

**2012 DODGE JOURNEY**



Stk# 165535

**\$26,988 PLUS HST & LIC**

**2012 DODGE GRAND CARAVAN SXT**



Stk# 364444

**\$21,987 PLUS HST & LIC**

**2010 HYUNDAI GENESIS 2.0T**



Stk# 008555

**\$17,987 PLUS HST & LIC**

**2007 HYUNDAI SANTA FE**



Stk# 119582

**\$13,288 PLUS HST & LIC**

**2009 HYUNDAI ELANTRA TOURING GL**



Stk# 032126

**\$11,998 PLUS HST & LIC**

**2009 HYUNDAI ELANTRA GL**



Stk# 119582

**\$10,988 PLUS HST & LIC**

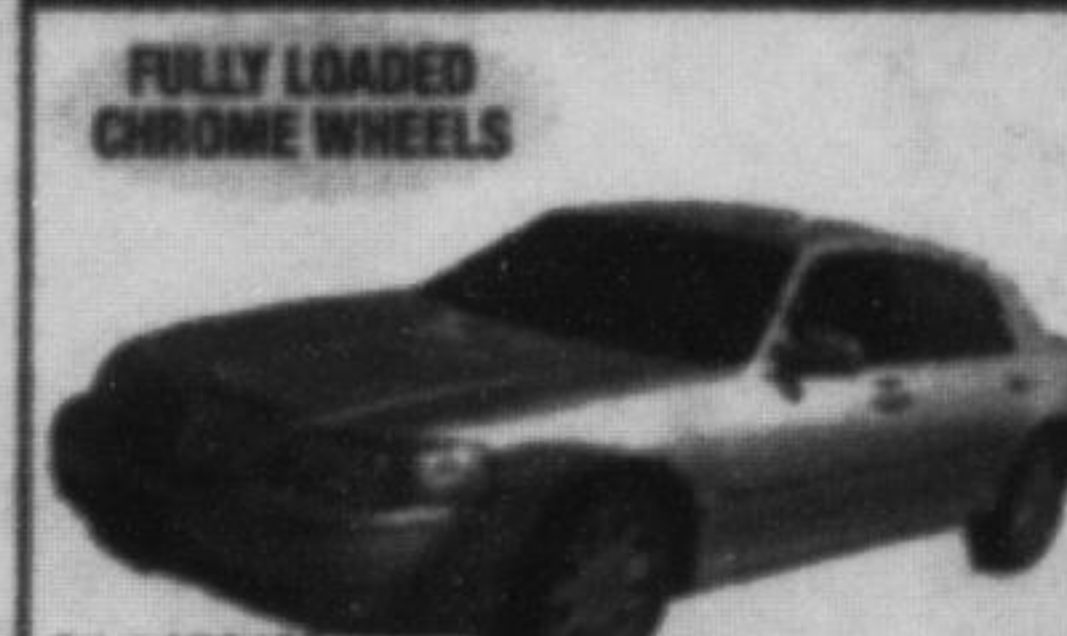
**2009 HYUNDAI ELANTRA GL**



Stk# 769653A

**\$9,988 PLUS HST & LIC**

**2004 LINCOLN TOWN CAR**



Stk# 679480

**\$9,688 PLUS HST & LIC**

**2009 HYUNDAI ACCENT GL HATCHBACK**



Stk# 129640

**\$7,488 PLUS HST & LIC**



**TO VIEW OUR FULL INVENTORY LIST**  
[miltonhyundai.com](http://miltonhyundai.com)  
**905-875-1120**