

NEWS

Phone survey will evaluate the Town's programs and services

Through the month of June, Miltonians may be asked to participate in a telephone survey being conducted for the Town of Milton.

Residents may receive a call from the Town's consultants (Miller Dickinson Blais Inc. and Forum Research) asking for their input on the Town's recreation and transportation programs, the library programs and services and other communication methods used by the Town and library.

The survey will help the Town develop updated community profiles, evaluate current and future programs and services, and assist with short and long-term decision making and planning, specifically in the development of the Town's community services and Milton library master plans. Survey responses will be kept confidential, and residents will be selected randomly within each of Milton's eight wards.

For more information about the survey, call (905) 878-7252, ext. 2529.

Introductory skateboarding clinic on Sat.

Aspiring skateboarders, take note.

The West 49 LRN2SK8 cross-country summer tour kicks off right here in Milton this coming Saturday — with a full day of introductory sessions being held for beginner boarders five to 15 years of age.

They'll run from 9:30 a.m. to 4:30 p.m. — with three 90-minute sessions over that time — at RioCan Centre on Maple Avenue.

A mobile skate park will be set up to teach young boarders, while a build-a-board workshop will also be held, as will prize give-aways.

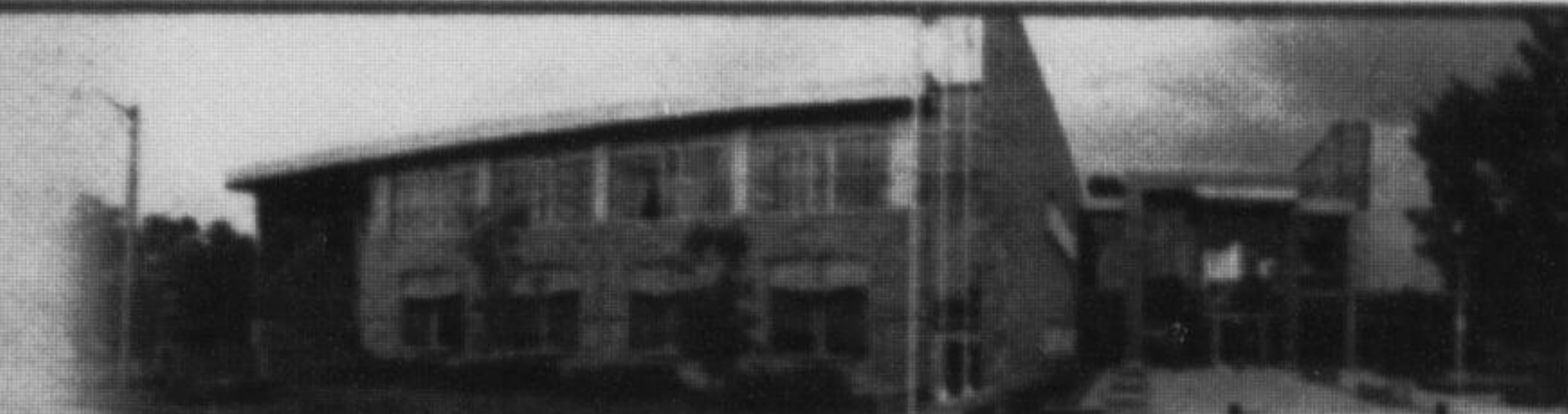
To sign up or for more information, visit www.west49lrn2sk8.com.



The Corporation of the Town of Milton

• 905-878-7252 • TTY: 905-878-1657 • 1-800-418-5494 (Rockwood/Guelph)

www.milton.ca



Fifth Line Improvements – Derry Road to Highway 401 Main Street Improvements – Fifth Line to James Snow Parkway Class Environmental Assessment Study

Notice of Public Information Centre #1

The Town of Milton is carrying out a Class Environmental Assessment (Class EA) Study for the improvements of Fifth Line between Derry Road and Highway 401, and Main Street between Fifth Line and James Snow Parkway. The Class EA Study is being undertaken in accordance with Schedule 'C' of the Municipal Class Environmental Assessment process (2000, as amended in 2007 & 2011), which is approved under the Ontario Environmental Assessment Act. MRC has been retained to assist with the study. The study area is shown on the key plan.

Fifth Line Improvements – Derry Road to Highway 401

Fifth Line between Derry Road and Highway 401 is an existing two-lane rural roadway with an at grade crossing with CP rail south of Main Street. Lands on both sides of Fifth Line are part of the Derry Green Corporate Business Park, and are mainly designated for industrial and business uses.

Main Street Improvements – Fifth Line to James Snow Parkway

Main Street between Fifth Line and James Snow Parkway is an existing two-lane rural road. Main Street currently terminates as an unsignalized T-intersection at Fifth Line. Similar to Fifth Line, lands on both sides of Main Street are part of the Derry Green Corporate Business Park, and are mainly designated for business uses. The intersection of Main Street and James Snow Parkway is already at 4 lanes.

A key component of the study is consultation with interested stakeholders (public and regulatory agencies). A Public Information Centre (PIC) has been arranged for:

Date: Wednesday, June 19, 2013

Time: 6:30 p.m. to 8:30 p.m.

Locations: Milton Centre for the Arts, Robert Bateman Art Studios
1010 Main Street East, Milton



The purpose of the PIC is to review and obtain public input on the problem being addressed, background information, the alternative solutions being considered and preliminary design of alternatives. If you cannot attend and would like to provide comments, please forward them to the Town of Milton or the Consultant Project Manager at the addresses below:

Mr. Alan D'Souza, P.Eng.

Coordinator, Infrastructure, Town of Milton
150 Mary Street, Milton, Ontario L9T 6Z5
Phone: 905-878-7252, ext. 2510
Fax: 905-876-5029
e-mail: alan.dsouza@milton.ca

OR

Ms. Katherine Jim, P.Eng.

Project Manager, MRC
2655 North Sheridan Way, Mississauga, Ontario L5K 2P8
Phone: 905-823-8500
Fax: 905-823-8503
e-mail: kjim@mrc.ca