



Kim Scott*
Sales Representative
878-8101
kimscoff@royallepage.ca • www.kimscoff.ca



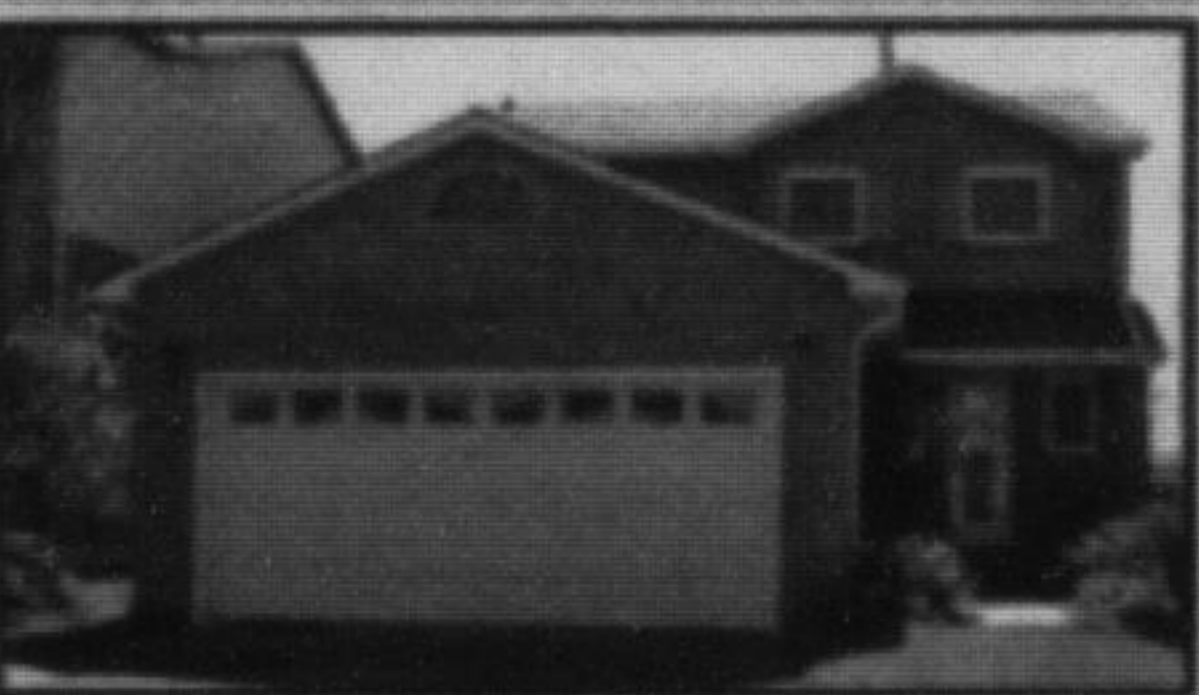
INGROUND POOL

NEW LISTING



Exceptional 3 plus 1 bedroom sidesplit with great curb appeal in Bronte Meadows on a generous 85 x 120 landscaped lot. Hardwood on the main floor, stairs and upper landing, crown moulding, upgraded trim and doors. Large eat in kitchen has quality replaced cupboards and built ins and patio door leading to large deck '12, beautiful pool '98, professionally landscaped yard, fence '07 and garden shed '08. Large family room with above grade windows and cozy fireplace. Furnace and A/C '10, garage door '11. All dressed up and ready for summer fun! \$512,500

COMING SOON!



Lovely family home with double garage backing onto a park.



Top 3% Nationally for Royal LePage

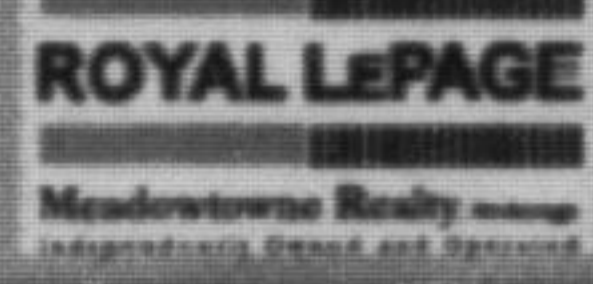
905-878-8101

To view our listings go to
www.THEHOMEHUNTER.ca

Barbara Crowe, M.V.A.

BROKER

barbcrowe@royallepage.ca



Hunter Obee, B.COMM.

SALES REPRESENTATIVE

hunter@thehomehunter.ca

TAKE THE LANDLORD OFF YOUR PAYROLL!



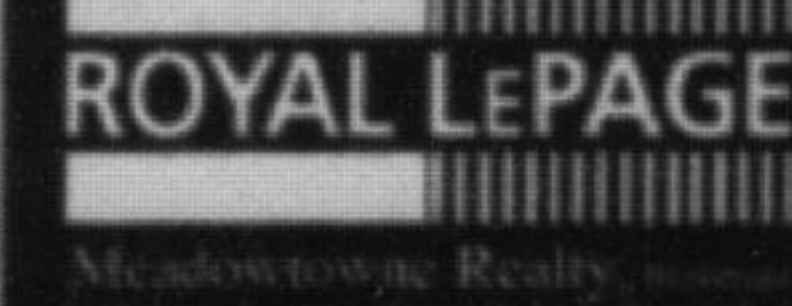
...and invest in fixing this spacious four-level sidesplit to suit your own style and taste. Located on a large lot on a quiet crescent within walking distance of schools, "Go" transit, shopping etc. It features an eat-in kitchen overlooking the family rm with walkouts to the two tiered deck, inside access to the garage and parking for 4 cars. The furnace is only four years old. Explore the possibilities. Asking \$399,900. Call Barb to view.

RAISED BUNGALOW IN DORSET PARK



Located on a quiet crescent close to schools with a single attached garage and parking for four cars. This attractive home has had the living room/dining room and kitchen re-configured to the popular open concept design.

Pat
RIDEOUT
Without change, there'd be no butterflies
Direct **905 875 7040** | Office **905 878 8101**
pat@patrideout.ca | www.patrideout.ca



*Sales Representative

SIMPLY STUNNING



Heritage home with an addition and a total rebuild in 2007. Fabulous layout that's warm, inviting and perfect for entertaining, both inside and outside. Over 3,000 square feet of finished space, this home boasts all the high end finishes you would expect in an offering of this quality. Call Pat for a personal tour and a complete description of features. **\$938,900**

TONS OF UPGRADES



This 4 bedroom all brick home will not disappoint. Gourmet kitchen, maple hardwood floors and stairs, separate dining room and spa-like master ensuite are just a few of the features you'll fall in love with. Call to see for yourself. **\$599,900**

SIZE, LOCATION, PARKING!



This building has it all. Prime space located just off Main St. offers 3170 sq.ft with lots of parking at the rear. Perfect for a retail store, art gallery and studio, or a spa to name a few. Public transportation and shopping in the area. Call Pat for an appointment to view. Landlord willing to divide space from a minimum of 2400 sq.ft. **\$11.00 per sq.ft.**

RETIRED OR CLOSE TO IT?



This community may be exactly what you're looking for. Two bedroom bungalow in Antrim Glen offers total one-floor living approx. 25 min west of Milton. Community centre with heated salt water pool, billiard room, library. No more shoveling or mowing the lawn. Large deck for bbq's and summer enjoyment. Call Pat for details of monthly costs. **\$214,900.**

FOR LEASE



Front unit of a detached home in old Milton. Two bedrooms on the upper level. Great location - walk to downtown, shopping and restaurants. Rent includes gas heating. Call Pat for a viewing appointment. **\$1000.00 per month**

I'm never too busy for your referrals.

Full member of the Oakville-Milton, Toronto and Hamilton-Burlington Real Estate Boards

Doug Howden**
Broker
878-8101
doughowden@royallepage.ca

AFFORDABLE COUNTRY



Located between Milton and Georgetown this approximately half acre property has a four bedroom home with 2 on the main floor and 2 on the second floor. A 4 piece bath on the main floor and a 3 piece bath on the 2nd floor. Entrance from garage to basement. Steel roof, hot water heating and paved driveway with 2 car garage. Minutes to Milton, Georgetown and Hwy 401. **\$439,900**

Top 1% in Canada again for 2012.

THE BRAZEAU TEAM

www.BRAZEAUTEAM.COM

905-878-8101



Joseph Brazeau*



Virginia Brazeau*



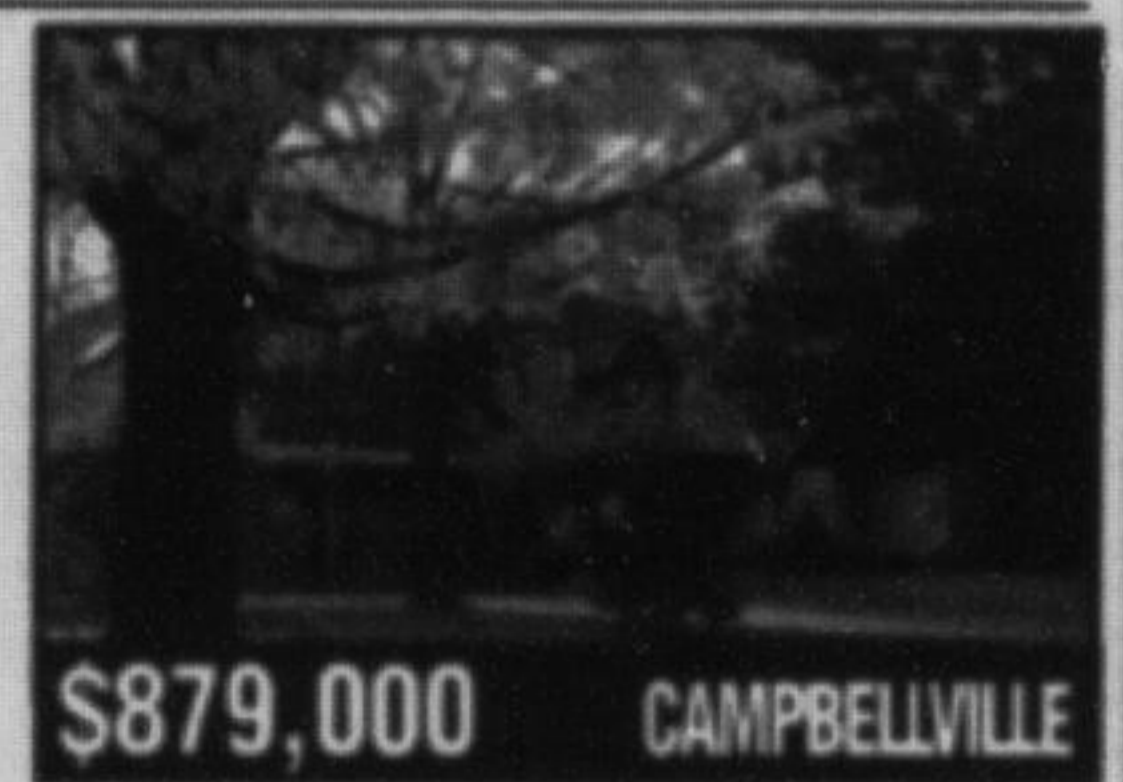
Jodie Near*



Jennifer Brazeau-Borg*

FABULOUS CAMPBELLVILLE EXECUTIVE BUNGALOW.

2 pretty landscaped acres w/mature trees. Sought after McLaren Estates. Spacious open & bright! Gleaming hardwood floors on main floor. Updated kitchen. Interlocking driveway. Meticulously maintained. Quick access to 401 @ Guelph Line. Shows 10+++



\$879,000 CAMPBELLVILLE

EXECUTIVE BUNGALOW ON 80 BEAUTIFUL ROLLING ACRES

Custom built in 1989. Spring fed pond. Cultivated fields. 6 Acres of bush. 2566' frontage on dead end road with walking trail. Huge country kitchen with oak cabinets & doors. Walk out basement with in-law suite. 32' x 60' workshop/barn - 3 overhead doors. 1/2 concrete flr & 1/2 gravel flr (ideal for horses). Circular drive. Home meticulously built & maintained. Approx 3 km W of Hwy 6. Don't delay - Great Opportunity.



\$1,050,000 FLAMBOROUGH

CUSTOM BUILT EXECUTIVE HOME

On 2 Acres in an Exclusive Estate subdivision. 4 bedrooms plus loft. Huge family room off kitchen with wood burning fireplace & patio doors to deck. Vast lawns, beautiful gardens & inground pool. Shared ownership of 16 Mile Creek & wooded acres. Rarely offered opportunity. Quick access to 401 @ Trafalgar Road or James Snow Parkway.



\$989,000 MILTON

11 BEAUTIFUL ACRES IN RURAL BURLINGTON

Gated entrance leads to this custom raised bungalow. 3+2 bedrooms. Stunning new kitchen - cherry cabinets, quartz counters & heated ceramic floor. Main floor master suite. Amazing raised deck of kitchen & DR. Spectacular views of the Escarpment (Mount Nemo). 10 stall barn, tool shed, workshop & maintained paddocks. A BRANCH OF BRONTE CREEK RUNS THROUGH. Rare opportunity in the sought after area. Quick commute to 407, 401, QEW Milton & Burlington. A must see!



\$1,590,000 BURLINGTON

10 BEAUTIFUL ACRES WITH 1 ACRE POND

Amazing sprawling bungalow - 3780 sq ft main level + 4112 lower level w/numerous walk outs. Several bedrooms with ensuites. In-law/nanny/teen suite. Spacious open concept main level. New hardwood floors in principal rooms + master. Vast lawns/gardens. Enjoy your own park. 12 Min to 401/Campbellville. Must be seen to be appreciated.



\$1,095,000 MILTON

BEAUTIFUL STONE CENTURY HOME

Set back from road on 17 Acres. Oak country kitchen. Living room w/woodstove insert. Tree lined lane. Spectacular stone "Landmark" barn. 2nd. modern horse barn with 6 stalls, 2nd floor office & kitchenette & bath. Oak board paddocks, hay field. Detached 2 car garage. Great location - Rockwood, Guelph. 12 minutes to 401 @ Campbellville.



\$949,000 MILTON

PRESTIGIOUS "WHISPERING PINES ESTATES"

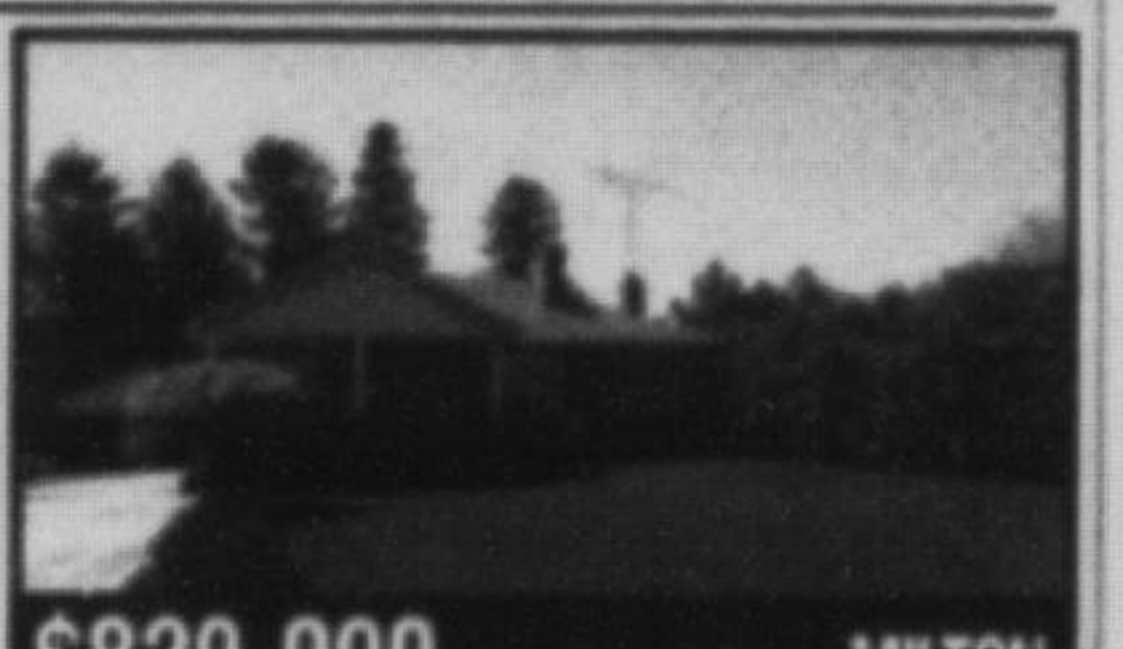
Spectacular custom built executive home on 2 wooded Acres. Open concept, 2 story ceilings. Main floor Master Suite. Gourmet kitchen with granite counters. Hardwood floors. 2nd staircase for Nanny suite. Finished recreation room with wet bar. Numerous walk outs to inground pool with waterfall. Minutes to Campbellville/Milton.



\$1,598,000 CAMPBELLVILLE

SOLID BRICK BUNGALOW ON 4.8 ACRES

Set on a spectacular backdrop of the Niagara Escarpment. Five minutes away from downtown Milton and the 401, it features part of the Sixteen Mile Creek, thousands of mature trees, and acreage that is stunning. A detached garage and a large barn/outbuilding offer many opportunities. A rare chance for country life in Town. Rare opportunity.



\$829,000 MILTON

For further information and photos on these properties please visit www.BrazeauTeam.com