

Opinion

Spring almost here, use extra caution near waterways

With the arrival of spring tomorrow, we urge residents to be mindful of the potential hazards created by the weather at this time of year.

While scattered flurries are forecast for most days the rest of this week, spring weather can bring a mix of rain and snow and, combined with the annual thaw, local waterways become full and run fast.

Conservation Halton (CH) — responsible for the maintenance and operation of four major dams and 12.5 km of flood control channels in the region — has issued reminders to residents about the dangers that exist near streams, rivers, ponds and lakes, and urge people to keep family and pets away from the edge of all waterways.

Parents should be especially vigilant in keeping children away from any waterway.

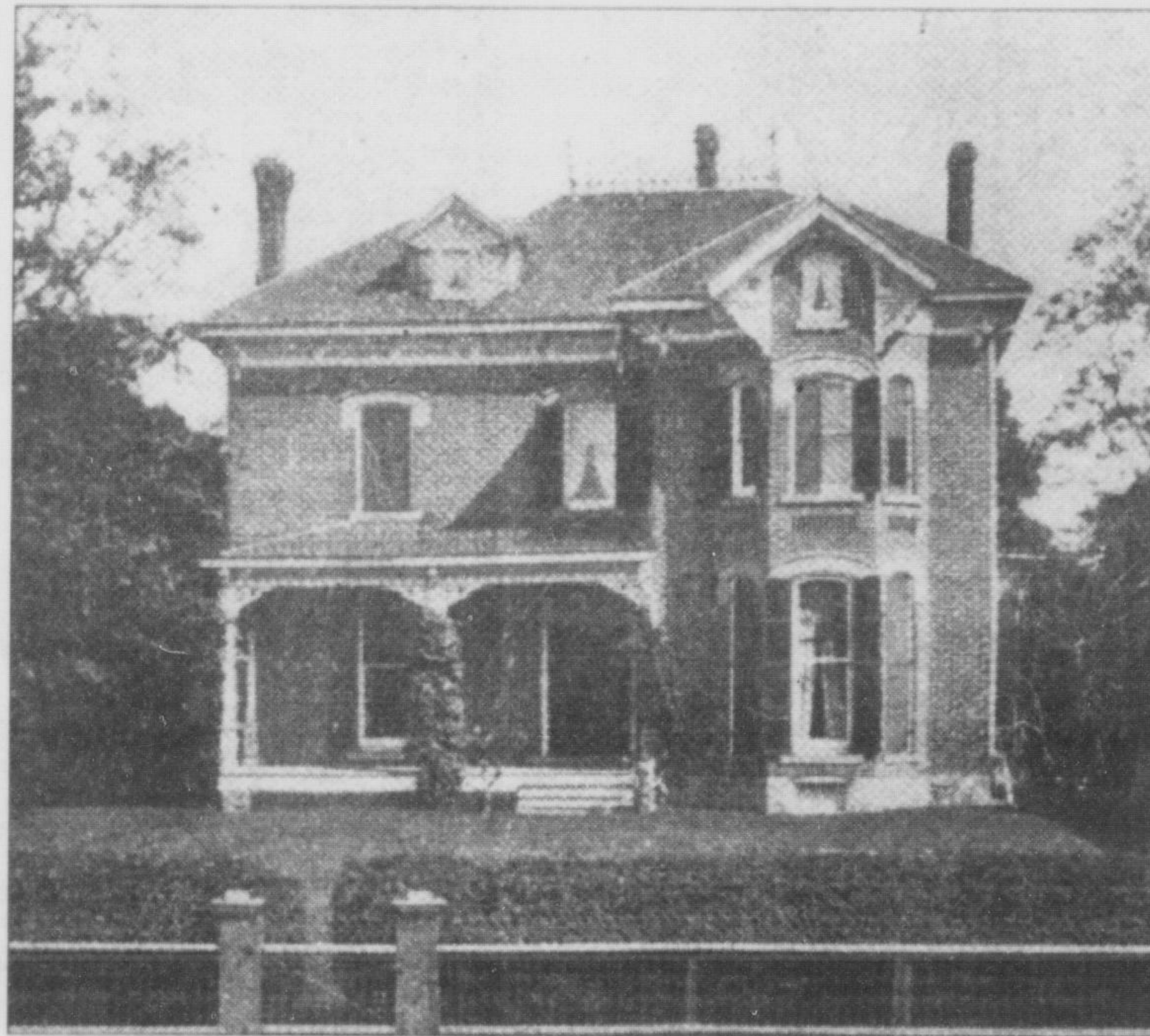
Flooding may also be caused by breaking ice, which clogs the flow.

Once it gives way, however, the current could easily cause problems.

Slippery and unstable stream banks and extremely cold water temperatures can also lead to very hazardous conditions close to any body of water, according to CH.

Please keep family members and pets safely away from any water's edge and help make this an enjoyable spring.

For more information, visit CH's website at www.conservationhalton.on.ca, call (905) 336-1158 or email web@hrca.on.ca.



Heritage Matters

Dr. Peter Stuart replaced a pioneer home on the southwest corner of Main and Charles streets in 1885. He sold it in 1907 to Dr. M. Gowland, and succeeding members of that family lived there until 1963. Dr. Gowland was medical officer of health during the 1918 flu epidemic and reduced its severity locally by insisting on closing all public events. The house was demolished in 1964 for the present stores.

— Submitted by Heritage Milton and Milton Historical Society

Letters welcome

The Canadian Champion welcomes letters to the editor. We reserve the right to edit, revise and reject letters.

Letters must be signed with first and last name, and the address and the telephone number of the writer included for verification purposes.

Email your letters to kmiceli@miltoncanadianchampion.com or send by mail to 555 Industrial Dr., Milton, Ont., L9T 5E1, or leave them at our office.

Our office hours are Monday to Friday from 9 a.m. to 4 p.m.

Letters

Thanks to community for hospital Penny Drive support

Dear Editor:

On behalf of the volunteers in the Milton District Hospital (MDH) Auxiliary Gift Shop, Uniquely Yours, who have been collecting and rolling coins since last fall, thank you.

The Penny Drive has been generously supported by the hospital staff and volunteers as well as the citizens and businesses of Milton. The volunteers have been receiving coins in containers of all shapes and sizes. Over the

Christmas holidays, a young girl dropped off a large bottle filled with pennies with a handmade card wishing us a Merry Christmas and telling us that she was donating all the pennies that she had been saving for more than a year.

Special thanks to Joyce Anderson from the Fracture Clinic who provided us with the leg cast that sits by the elevators outside the gift shop. She collected and used only sample and

defective fabric in the making of this cast and other mini casts located in various businesses around town.

The leg cast has been emptied once and is quickly refilling. The auxiliary will continue this Penny Drive indefinitely with funds raised going toward the purchase of equipment for the hospital.

Dorothy Heagle, president of MDH Auxiliary and Brenda Trickey, director of Uniquely Yours

The Canadian
CHAMPION

555 Industrial Drive, Milton, Ont. L9T 5E1

905-878-2341

Advertising Fax: 905-876-2364

Classified: 905-875-3300

Circulation: 905-878-5947

www.miltoncanadianchampion.com

V.P. — Group Publisher
Neil Oliver

Regional General Manager
David Harvey

Director of Advertising
Katy Letourneau

Editor in Chief
Jill Davis, Halton Region

Managing Editor
Karen Miceli

Production Manager
Manuel Garcia

Circulation Director
Charlene Hall

Office Manager
Sandy Pare

On Line Sales Manager
Daniel Coleman

The Canadian Champion, published every Tuesday and Thursday, is a division of Metroland Media Group Ltd.

Advertising is accepted on the condition that, in the event of a typographical error, that portion of the advertising space occupied by the erroneous item, together with a reasonable allowance for signature, will not be charged for, but the balance of the advertisement will be paid for at the applicable rate. The publisher reserves the right to categorize advertisements or decline.

CCAB CCAB Audited

Recognized for excellence by

ocna Ontario Community Newspapers Association

CNA Canadian Community Newspapers Association

SN3 Suburban Newspapers of America

The Canadian Champion is a proud media sponsor for:

