

THE PERMANENT
FOR HOMES, THERE'S NO PLACE
LIKE THE PERMANENT
 CANADA PERMANENT TRUST CO., REALTOR 639-3355



248 BOUSFIELD
NEW LISTING — BOUSFIELD CRES.
 \$408,900. 4-level back-split, 2 fireplaces, inground pool, 4 bedrooms, loads of extras. It's gorgeous. **DAN KOVALICK** 639-3355, 637-2962.



6TH LINE — HORNBY
 3 1/2 ACRES, 6TH LINE off Steeles. In-ground pool, 2 fireplaces, 4 bedrooms, backs onto Hornby Towers Golf Course. Name your possession. **DAN KOVALICK** 639-3355, 637-2962.



CHANDOS
 60 ACRES, cottage, Peterborough. \$35,000. 300 feet on Crowe River, 50 acres bush, call for directions and details. **DAN KOVALICK** 639-3355, 637-2962.

LAND — FREELTON & PUSLINCH
 (A) 1 1/4-acre lot, \$32,500. Surrounded by gorgeous homes.
 (B) 8 1/2 acres — 401 & Guelph Line. \$49,900 or offer.
DAN KOVALICK 639-3355, 637-2962.

Real Estate

RE/MAX RE/MAX RE/MAX RE/MAX RE/MAX RE/MAX

RE/MAX

miltovere realty corporation



Above the Crowd!

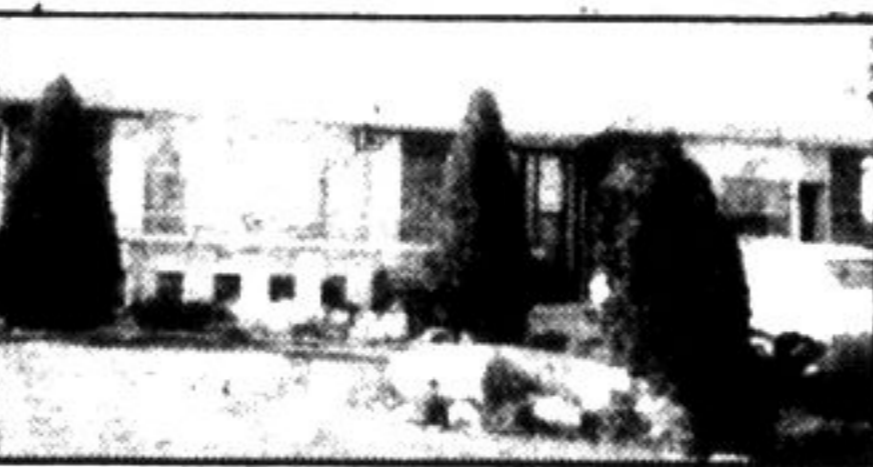
CALL:
KEN & AUDREY NEWELL
 OFFICE: 878-2385
 RES: 878-5339



COLLECTOR-NUT OR RESTORER NUT has your hobby taken your home over? Get your stuff out of the house, your wife will love you. She'll love her new home too! 3/4 bedrooms, super sunny family room, family eat-in kitchen, great rec room with fireplace. Plus 2 car garage plus heated and insulated 36' x 48' steel building all on 1 acre country lot. \$128,500. Call 878-5339.



EASY TO LOVE. Spacious family home with easily maintained exterior-aluminum eaves etc. Fully fenced yard. 3 large bedrooms, master has 4 piece ensuite, main floor sunken family room overlooked by family eat-in kitchen. Tastefully decorated in neutral tones. \$93,900.



BIG BRICK BUNGALOW. Super family home on huge lot with handy access to GO station. 3 or 4 bedrooms, spacious living dining room, eat-in kitchen, family room. Totally finished basement - rec. room has stone & marble fireplace, games room, 4th bedroom or den. 4 pce plus 3 piece baths. Super partially enclosed patio. \$96,900. Call 878-5339.



TREE LOVERS ONLY behind these beautiful trees sits your dream home on 1 1/2 acres. Architect designed custom built two storey with 2 car garage, sunken living room, family room, separate dining room, breakfast room. 3 large bedrooms - 3 pce. ensuite. Finished basement with wine cellar. Seeing is believing. Call 878-5339.

RE/MAX RE/MAX RE/MAX RE/MAX RE/MAX RE/MAX

Bayley MacLean

A Professional Real Estate Team

350 Main St. E., Milton

878-0565

826-9380
 Toronto Line

DOWNTOWN PROPERTY

Looking for a prophet, who's looking for a profit!

RENTAL TOWNHOUSES

Looking for a landlord. Good condition, excellent locations. 3-star tenants, and fair market value.

THE LAP OF LUXURY

Wriggle your toes in deep new broadloom. Admire the clean, fresh decorating. Play with the intercom system! A terribly tantalizing townhome. Excellent financing, too!

Call **BOB MARTIN**, Bayley MacLean Real Estate Ltd. 878-0565.



PICTURESQUE COUNTRY

Unique 2250 sq. ft. country home filled with charm and loaded with extras. Private setting on 10 Sideroad, inground pool. \$179,500. A must to see. Call **JEAN THOMSON** 878-0565 or 878-0767.



SOMETHING NEW!

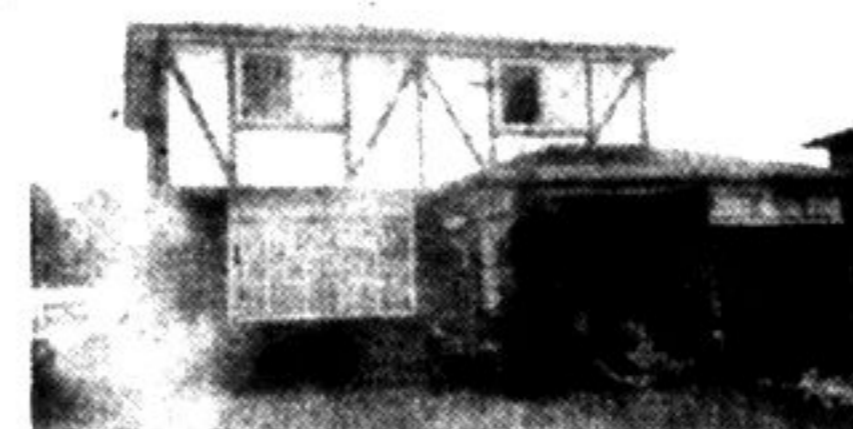
3 bedrooms, brick fireplace, solid pine kitchen, beautifully landscaped lot all on 2 acres. See it today with **SHARON WAYLING** 878-0565.

NIAGARA ESCARPMENT

Your own piece of the rock with beautiful natural setting. The perfect place to build your dream home. Call **JOYCE SCOTT** at 878-0565 or 878-1526.

INDUSTRIAL SITE

3.9 acres of M2A, ready for servicing. Hydro in, gas line to lot line. Bring your sketches! Call **JOYCE SCOTT** at 878-0565 or 878-1526.



WE'VE GOT YOUR NUMBER

Number 888 on a quiet court in Dorset Park, with 4 bedrooms, beautifully finished basement and a nice big yard. See it with **JOYCE SCOTT** today!



REDUCED—NOW \$71,900

- 3 bedrooms
- 1.5 baths
- Maintenance free exterior
- Walk-out to rear yard
- Immediate possession
- Call **JIM KERR** for all the details at 878-0565.

REALTY WORLD Colbeck



"STAY COMFORTABLE AND COOL" in your spacious 3 bedroom sidesplit. Gorgeous landscaped lot accented with rock gardens. For those hot summer evenings enjoy relaxing in/or around your large inground pool. Listed at a cool price of ... \$84,900. 26



"DON'T MISS THIS ONE" at a price like \$72,900. Seeing is believing! Maintenance free, 2 storey home ideal for you and your family. Completely enclosed yard, double paved drive and inside you will find ... huge eat-in kitchen, upgraded broadloom throughout and much more! Call today and arrange for your private inspection. 94



"IDEAL START" for your first home. Not likely to last long at an affordable \$65,000. Detached garage, 3 bedrooms, extra large kitchen. All of this and more situated on a huge lot in Milton. 39

INDUSTRIAL — COMMERCIAL — INVESTMENT



"ZONED M-1" Industrial property with excellent exposure. Over 3400 sq. ft., ideal location for tradesman shop, storage, assembly, etc. ... Call one of our trained I.C.I. experts for complete details! \$139,900. 45

Vacant land, 15 acres wooded in Halton Hills. Call our office for details! \$89,900. 36

- | | |
|----------------|----------------------|
| Jack-McCrudden | 878-6766 |
| Ross Cescon | 878-2755 |
| Sam Nadalin | 878-6709 |
| Max McKee | 854-2708 |
| Anne McLaren | 878-5652 |
| Howard Fretz | 878-6000 |
| Carol Flook | 876-1329 |
| Tony Martens | 878-7904 |
| Bill Goncz | 878-6890 |
| Leanne Baskett | 878-3048 |
| Nancy Turner | 878-3049 |
| Rob Colbeck | Toll Free 1-552-8984 |

876-1133

485 MAIN ST. EAST
 MILTON

BAYLEY MacLEAN'S PROFESSIONAL REAL ESTATE TEAM

- | | |
|-------------------|----------|
| Stephanie Hamnett | 878-0565 |
| Jim Kerr | 878-0565 |
| Peter Des Roches | 878-0565 |
| Lynn Wardle | 876-1554 |
| Mary Venerus | 853-3502 |

- | | |
|------------------|----------|
| Jackie Verdurmen | 878-0565 |
| Bill Gear | 335-6162 |
| Charles Wilton | 878-0689 |
| Brian Roemmele | 878-0565 |
| Ed Gorman | 878-4780 |

- | | |
|-----------------|----------|
| Bob Martin | 878-0565 |
| Joanne Thompson | 878-3794 |
| Jean Thomson | 878-0767 |
| Joyce Scott | 878-1526 |
| Sharon Wayling | 878-3619 |