

Royal Trust

REALTOR

CORP. OF CANADA REALTOR  
400 MAIN ST. E., MILTON  
878-8188

Royal Trust  
THE SIGN  
THAT SELLS

# The Canadian Champion Milton Real Estate

Wednesday, February 15, 1984

A. E. LePAGE

REAL ESTATE SERVICES LTD. • REALTOR

389 Main St. E., Milton

878-8101

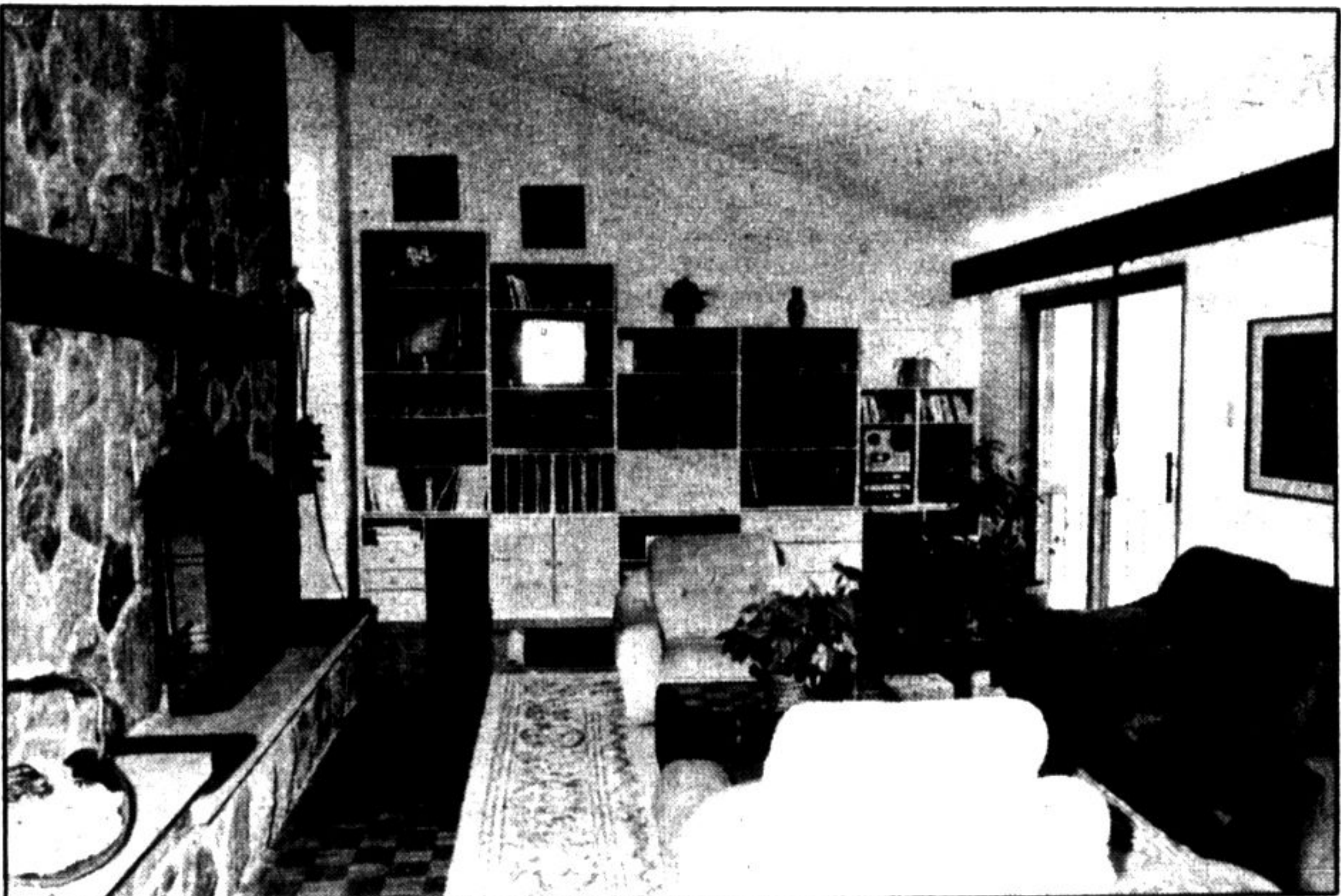
Toronto Line 826-9218



The Niagara Escarpment provides the perfect setting for this cedar home.



An open concept was used in designing the kitchen and family room.



A huge stone fireplace, two deck accesses and an adjoining sun porch are highlights of the living room.

## EXECUTIVE RETREAT WITH A VIEW

This custom designed 3,700 sq. ft. cedar home situated on the side of the escarpment, has 10 beautiful treed acres. It's secluded from the road down a quarter mile drive.

The living room dining room combination has a huge floor-to-ceiling stone fireplace, 2 walkouts to a deck plus a walkout to an enclosed sun porch—all with a breath-taking view.

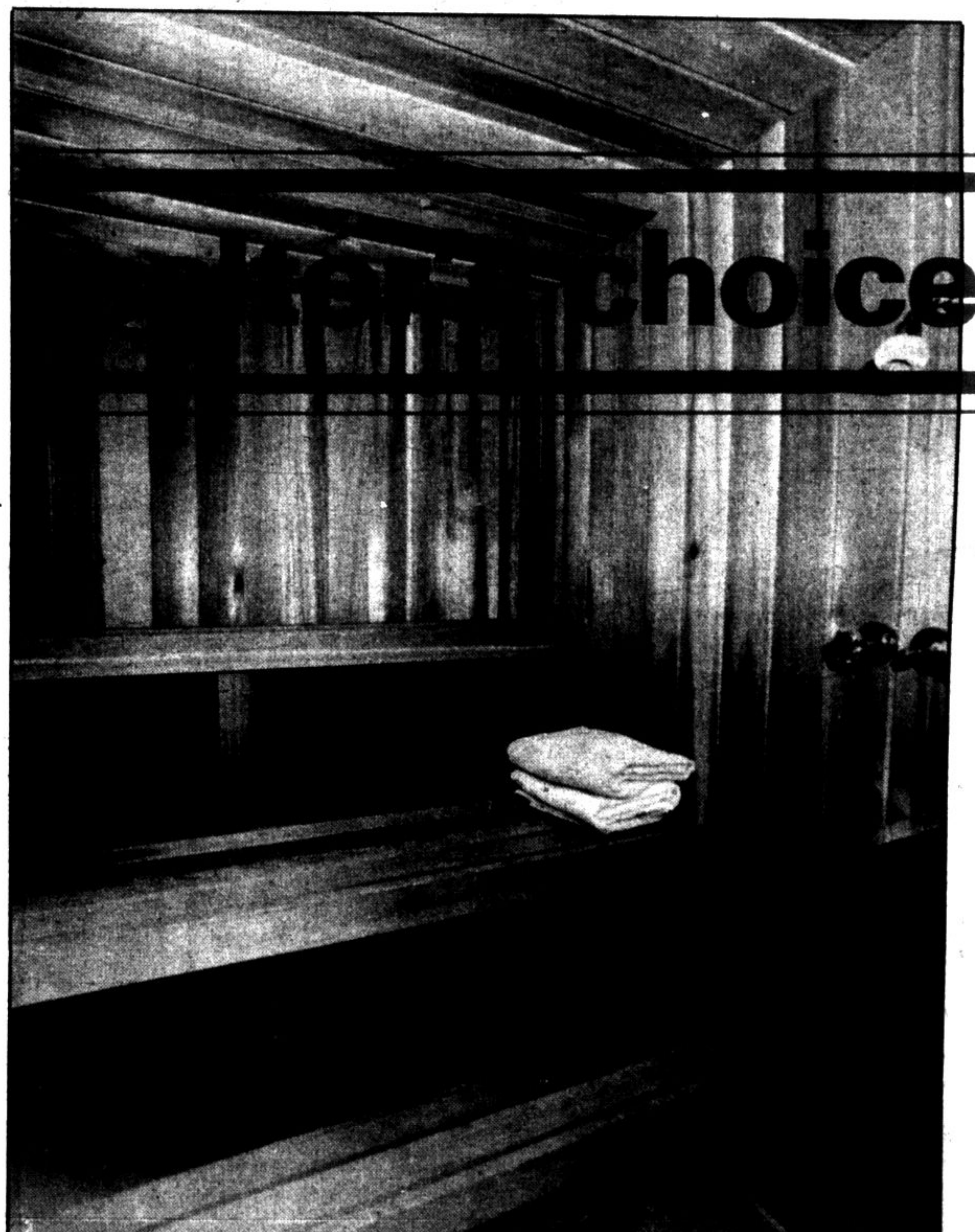
The kitchen has built-in appliances, an eat-in area, a walk-out to sun porch, and an adjoining family room with floor-to-ceiling stone fireplace.

The master bedroom has a six piece ensuite, dressing room with skylight, walk-in closet and walk-out to a separate deck.

The lower level is completely finished with a huge rec room with brick fireplace and two walkouts, a music room, guest bedroom, an office with walkout, 4 piece bath and sauna.

This home offers many other excellent features you will want to hear about.

Call ROYAL TRUST REAL ESTATE — 878-8188.



The lower level is completely finished to the extent of including a sauna.