



CORP. OF CANADA, REALTOR
400 Main St. E., Milton
878-8188

The Canadian Champion Milton Real Estate

Wednesday, December 5, 1984



REAL ESTATE SERVICES LTD. • REALTOR

388 Main St. E., Milton

878-8101

Toronto Line 826-9218



Elegant country living is available in this executive home located on a five-acre lot.

COUNTRY ESTATE

This prestigious Tudor is an executive's dream home providing over 6000 square feet of elegance, secluded on 5 acres of picturesque countryside. Lighted, rustic brick gateposts greet friends as they drive up the fully paved, curved driveway past the large kidney shaped pool to a 3 car garage.

Overnight guests are not crowded in 7 extra large bedrooms with 2 ensuite and 3 further bathrooms to eliminate lineups. Four fireplaces add that extra atmosphere to every floor. Large 2 storey reclaimed brick fireplace enhances the living and dining room areas and is open to the upper floor gallery and staircase area.

All trim and doors are solid oak. There is broadloom on all 3 floors and most closet doors are double mirrored. Energy efficient construction eases the heating costs. Central vacuum and air conditioning systems, public address and sound system throughout are just a few of the valuable extras.

The recreation room, complete with wet bar and fireplace measures 41' x 26'.

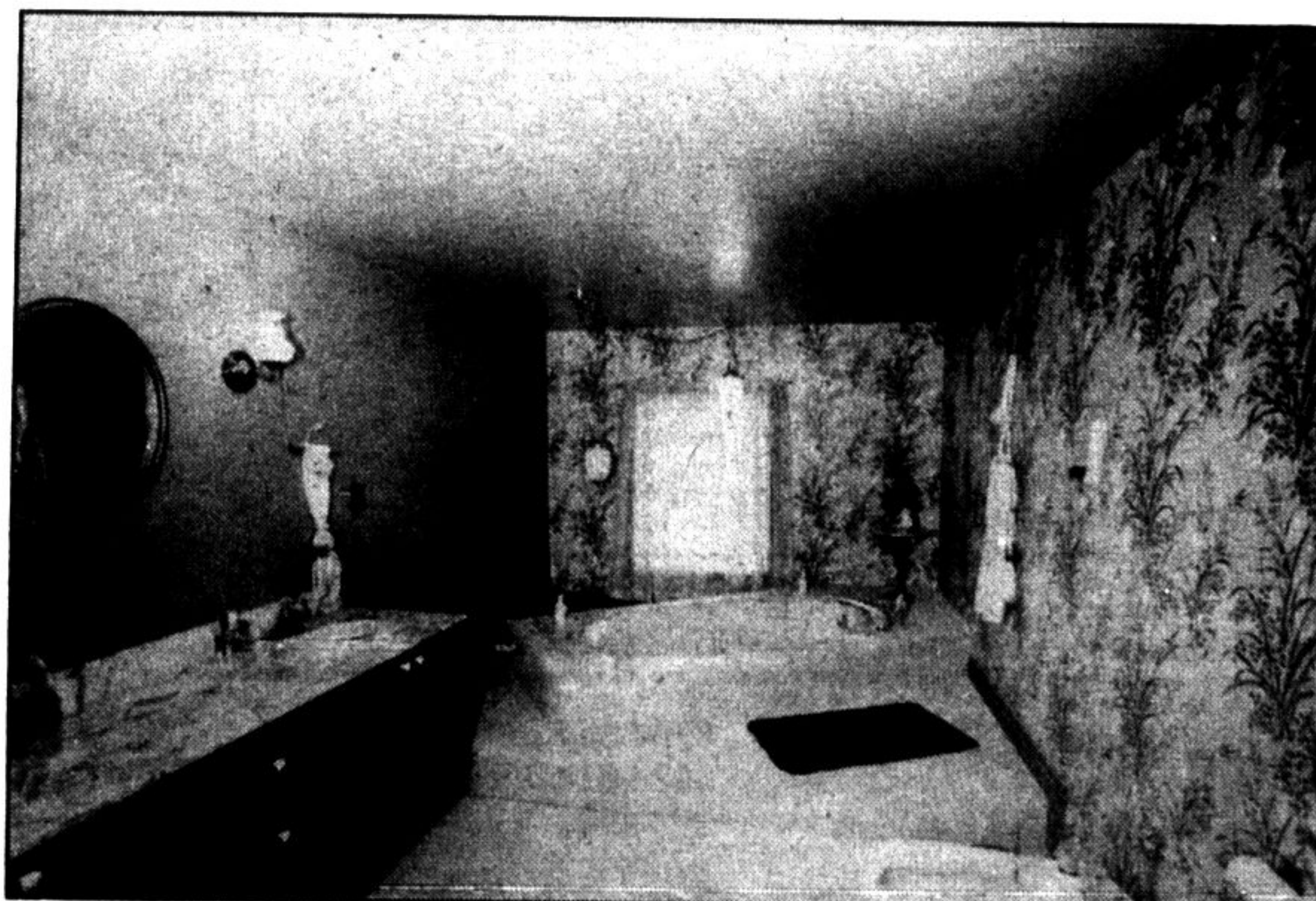
The kitchen is ultra modern with custom cupboards, built-in dishwasher, stove, oven, Kohler sink and adjoining laundry room with matching custom cupboards and a 2 piece bath.

For an appointment to view this unique estate, call Don Pelz at Century 21 Golden Real Estate Limited 878-8495.



The second storey balcony provides a view of the living room complete with a reclaimed brick fireplace.

realtor's choice



This luxurious bathroom is one of five in the 6,000 square-foot house.