

Lee Marie COUNTRY FOODS
We're Open 7 Days A Week
 327 BRONTE ST. S.
 WHITE OAKS PLAZA
 876-4851/52

about town

WEDNESDAY, NOVEMBER 21, 1984

THIRD SECTION

610 MARTIN ST.
 MILTON
 878-4137

NISSAN
 MAJOR MOTION IN MILTON

AT
 NORTH-END
NISSAN

Silver anniversary falls on the brink of hospital growth

It would have been an ideal occasion to break the sod for the addition to Milton District Hospital but this will not be part of the 25th anniversary celebration.

The facility will be recognized for a quarter of a century of health care service today (Wed. Nov. 21). Representatives of the fund raising committees, hospital foundation, boards of directors past and present and other invited guests will be part of the official celebration at 2.30 p.m.

An announcement concerning the expansion is expected from Ontario Minister of Health Keith Norton who will be a special guest.

"The anniversary has extra meaning to us. It is a significant date in the history of the hospital but it has a lot more meaning now that we're on the brink of starting the expansion," said Brian Brady, hospital administrator.

Since Mr. Brady joined the hospital staff nine years ago, future expansion seemed inevitable. The proposed expansion was first brought to the attention of the ministry in April 1979 but serious planning did not begin until three years ago.

It appears a prediction made at the annual meeting of Milton District Hospital Foundation in February was too optimistic. At that time it was hoped construction of the addition would have

An open house in 1961 got the community involved in the hospital's second birthday celebration. The operating room was open to public viewing. The first baby to be born at the hospital was Wanda Ramsbottom. The young lady returned to the facility in May of 1967 when the second floor addition was officially opened. Appearing with her are Mike Ledwith (left) who was board vice-chairman and Dr. M.B. Dymond, Ontario Minister of Health.

started by now. According to Mr. Brady the spring will likely be the time to turn the sod.

The \$15 million addition is not the hospital's first. The original 60-bed facility sprouted a second floor with more than 20 beds, a new administrative office and board room, Hospital auxiliary gift shop and a renovated lab, kitchen and laundry. That addition which was officially opened May 13, 1967 was completed at a cost of \$1.3 million.

Milton District Hospital took over from the 20-bed Milton Private Hospital, operated by Dr. C.K. Stevenson and cost \$830,000 to build in 1959.

The price of building hospitals has obviously risen over the past 25 years as has the contribution expected from the community. A successful fund raising campaign has put the total at least \$100,000 over the \$1 million goal.

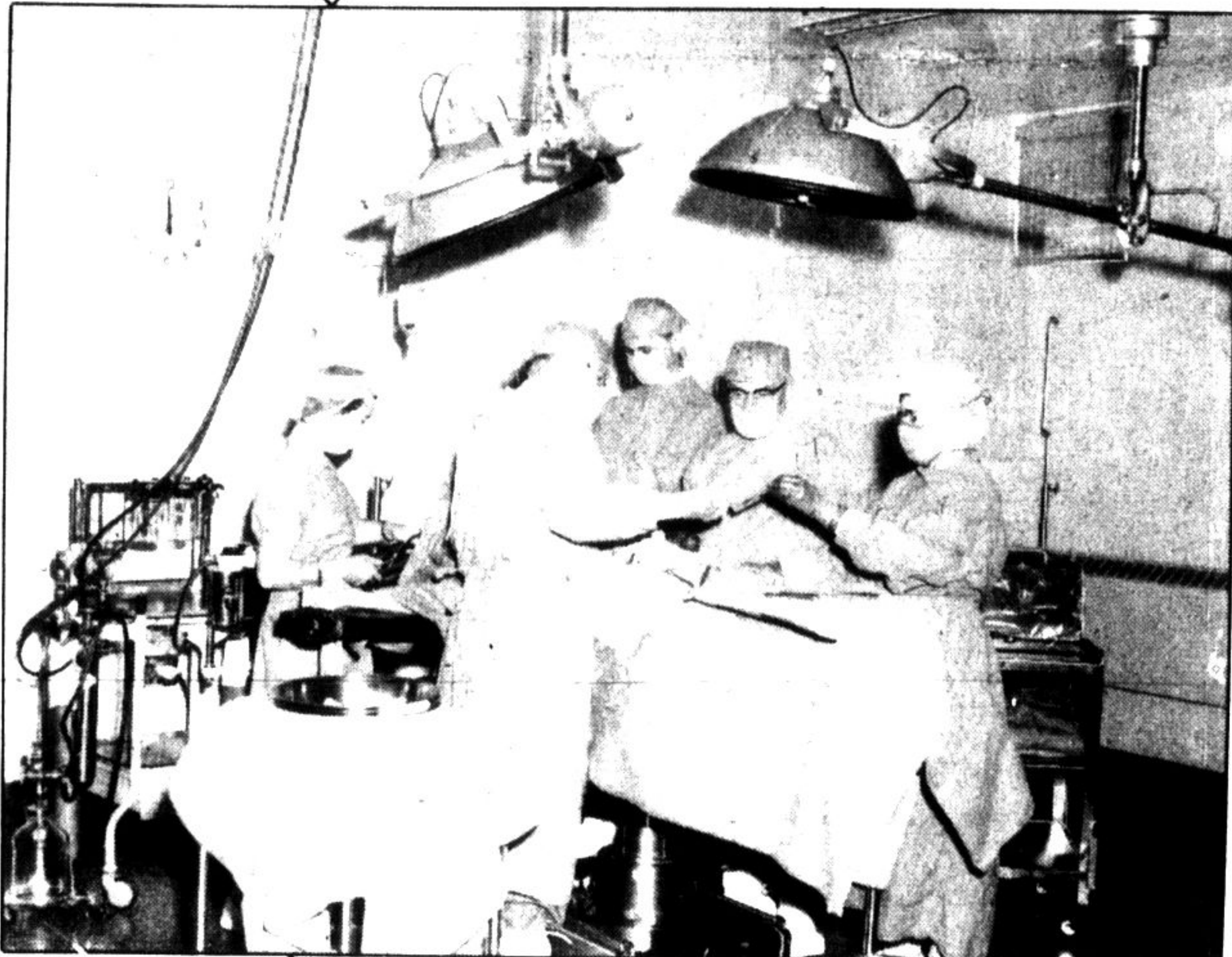
The addition will be larger than the existing structure although it won't significantly increase the number of beds. There are currently 83 beds and once the expansion is completed there will be 98.

"The delivery of health care in hospitals has changed over the years. In 1959 patients were admitted much more routinely and stayed in longer," explained Mr. Brady.

Many patients are treated as out-patients or day care patients. According to the administrator, 40 per cent of surgical cases are



The move from Milton Private Hospital to the new facility took place Mon. Dec. 4. Patients were bid farewell by Dr. C.K. Stevenson, cook, Louise Hystead, receptionist Lorne Walker, Nurses, Mrs. John Mowat and Mrs. Ken Agnew. Bruce MacNab and Norman Ward carry Mrs. M.J. Carton. The new hospital is shown with a second floor in this artist's conception which was published in The Champion in 1988.



treated as out-patients. The increase in this type of care made the need for expanded facilities greatly felt in the emergency department where these patients are treated.

Several other departments will also be expanded and an intensive care unit with six beds will be one of the new features of the two-storey wing. A 30-bed chronic care unit will be part of the addition, creating 10 more patient spaces than are currently available.

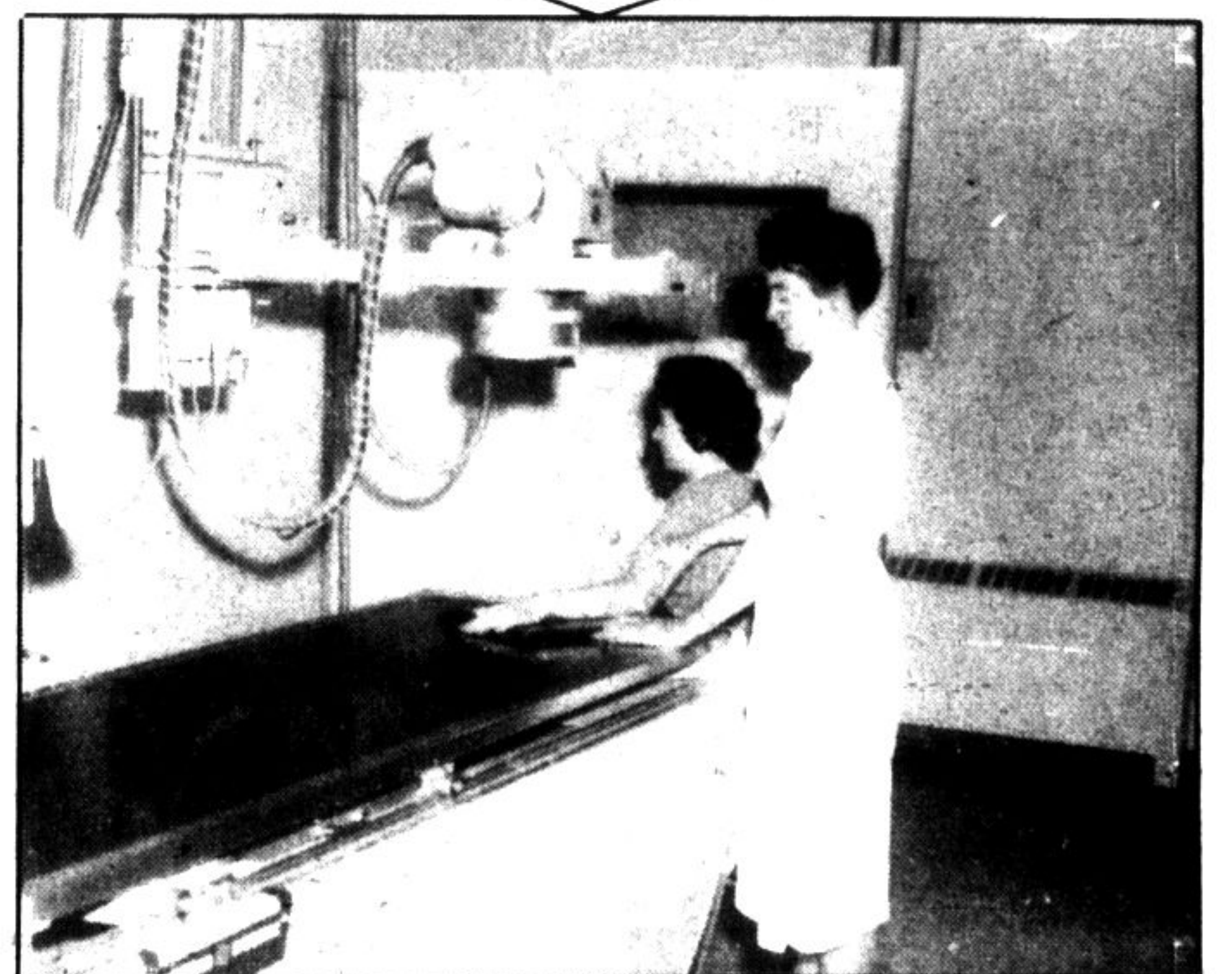
"The I.C.U. with all its special equipment is very much needed," said Mr. Brady.

New services will be part of the expansion. Milton District Hospital will offer speech therapy and audiology, occupational therapy and cardio care. A heliport will be added which will be able to handle air transfers after dark.

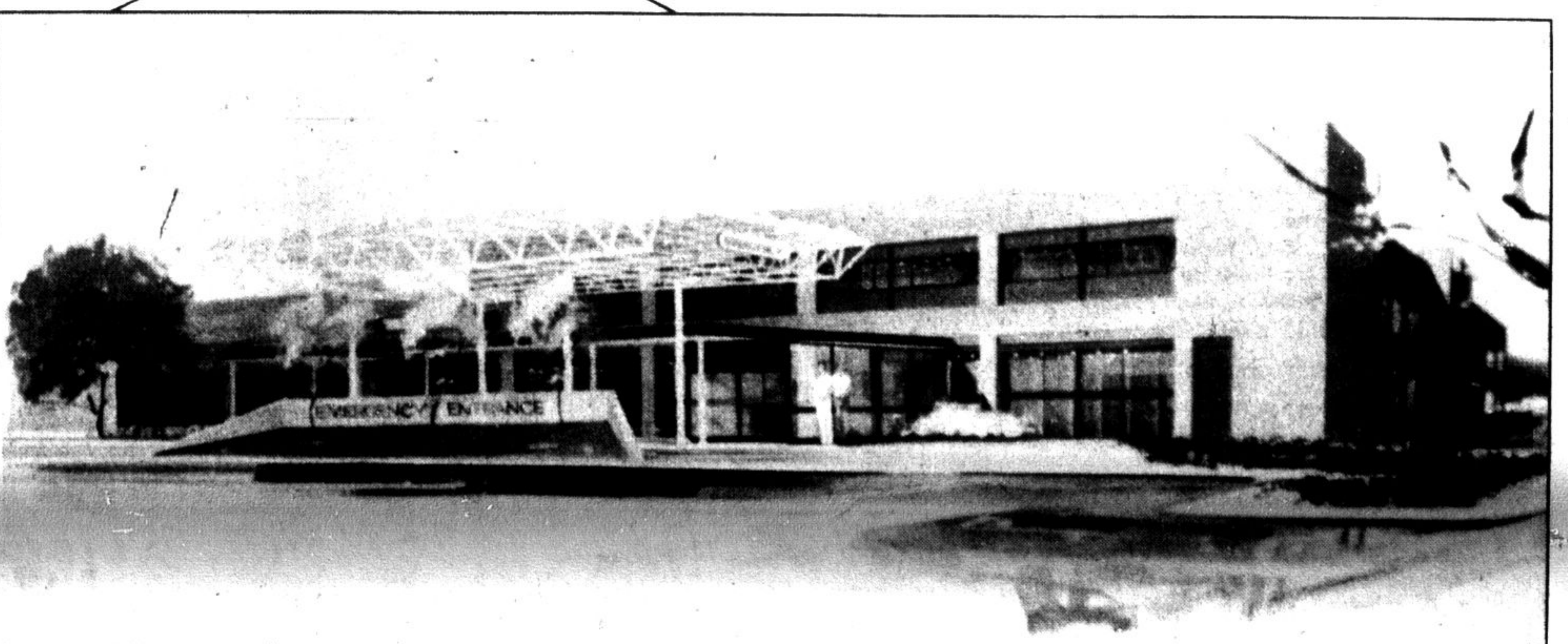
Air ambulances can land in the daylight only at this time as a proper lights are not available.

"Everyone is anxiously awaiting the beginning of construction," Mr. Brady said.

He has a constant reminder of the impending expansion in the form of floor plans displayed on the wall of his office. For at least another year, the blueprints and an artist's conception of the addition will have to satisfy those who eagerly await the opening of the new wing.



The Hon. D.M. Dymond, Minister of Health officially opened the hospital Sat. Nov. 21, 1959 with the help of Halton Warden John A. Milne (left) and M.L.A. Stanley Hall. Hospital board chairman Dr. C.A. Martin (right) also took part in the event which attracted 500 people. A tour on Saturday attracted about 400 and on the following day close to 3,000 toured the hospital. Below is the x-ray room as it looked in 1961.



Milton District Hospital will more than double in size when the expansion is complete. This artist's conception shows the new emergency entrance with access from Bronte St. The logo at the bottom right has been made popular throughout this year as a symbol of the fund raising drive which successfully reached higher than its \$1 million target. The scene above is likely to be repeated next spring when the foundation for the addition is created. This photograph taken in October, 1988 shows men and machines at work.

