

Person who loves toys finds perfect outlet

By LINDA C. KIRBY
Staff Writer

Patti Bradshaw is the first to admit she loves toys. So much so, she can remember browsing through toy shops long before her two children were born.

Today she is the proud owner of The Treasure Chest, the kind of toy store designed to fulfill any child's dream.

Crammed full of the latest games, favorite dolls and popular television characters, it is a goldmine to any youngster and those young at heart.

The shop is the first enterprise for the Milton born woman who explains she was seeking a new challenge when she made the decision to open a shop.

For the past seven years she has travelled extensively with her husband Chuck, and their two children Megan and Scott, spending time in England, India and the Middle East.

It was exciting, but when they returned home she found herself bored with the normal lifestyle.

"I was thinking of something to do with myself and also trying to think of what Milton needed. Then I thought of this," she said.

Open now for less than a month, response to the shop has been enthusiastic.

"I have had so many people say, this is exactly what we needed. People have been so nice and really kind," she added.

A former expediter with Northern Telecom and betting messenger with Mohawk Raceway, she admits she has little background in the retail business, but with some help from a friend and giftshop owner and relying upon her own judgement she has come up with what she hopes will be a success story.

"I'm trying to get good quality as well as providing a large selection," she said, adding much of the toys are imported.

There is the pre-school line of Dutch made educational toys, German 'Tolpatsch' dolls (\$89.95) as well as the popular and well established Fisher Price toys and games, Cabbage Patch dolls and accessories and old favorites such as Lego, Monopoly and

Yahtzee.

She also offers a good line of plush toys (made in Montreal) and all sorts of small, fun type gizmos including fluorescent shoelaces for \$2 pair which glow in the night.

"I have always enjoyed toys and I'm finding it fun to buy what I like," she said, adding she is discovering many other adults sharing the same fascination.

What are the winners for this Christmas?

Cabbage Patch dolls head the list, followed by the popular Care Bear line ("Care Bears are like Cabbage Patch dolls—they are like gold," said Mrs. Bradshaw), 'Masters of the Universe' for all those young Buck Rodgers, the new 'Get-a-long Gang' characters (based on a television cartoon), 'My Little Pony', not to forget all of the games including the latest Rock Trivia addition.

GI-Joe however, lives on as a favorite along with lego bricks and the popular Crayola sets.

While much of the merchandise is aimed at those 10 and under, there are the board games for the older set, not to mention some of the plush toys which adults do enjoy buying as gifts for that special someone.

Part of the fun of running the business is the opportunity to meet friends and former classmates.

"I know a lot of people. Milton is my town and now I'm seeing people I haven't seen for years," she said.

"It's my first business, but it's fun and a challenge. It keeps me busy all the time, ..



Treasure Chest owner Patti Bradshaw is shown with some of her favorite friends.

GARBAGE — What Ideas Do You Have?

The Regional Municipality of Halton invites applications for membership to the new citizen's Solid Waste Advisory Committee (SWAC).

What is SWAC?

SWAC is a voluntary organization established by, and reporting to, Halton Regional Council. The members of this organization will have an interest in the disposal of Halton's solid waste and be prepared to work toward finding solutions to the problems that have arisen. The Committee will be asked to compare Energy from Waste (EFW) to landfill then make recommendations on the role EFW should play in the future.

Why is it Needed?

Regional Council is concerned with the lack of public acceptance that has been shown by residents living in the area of proposed Energy from Waste plants. In response, it has chosen a new forum for citizens to assist Council in the examination of the health, safety, site selection, technological, and financial issues that are associated with this waste disposal alternative. It is also hoped that this forum will improve the communication between the residents of the community and those being asked to implement Waste Disposal programs.

Who May Apply?

ANYONE interested in waste disposal. Halton citizens, representatives of rate payers groups and technical experts are encouraged to apply.

How to Apply?

Application forms are available from the Regional Clerk's Department. A letter outlining the applicants interests in waste disposal may be attached. All applications should be received by December 21, 1984.

Comments?

Draft Terms of Reference are available from the Regional Clerk's Department. Comments on the purpose, mandate and set up of the Committee are encouraged.

Applications and/or comments on the Terms of Reference should be submitted to:

Vicky Henderson, Finance Department
Regional Municipality of Halton
1151 Bronte Road, P.O. Box 7000
Oakville, Ontario L6J 6E1

For further information please contact the Region at 822-2151 (or 878-8113 from Halton Hill) A.S. for extension 422

Halton

Reunion group hosting booth

Former Milton District High School students are needed to help make plans for the school's reunion May 10-12, 1985.

As that date moves forward, the organizing committee will now be meeting the second Wednesday of every month in the MDHS library.

The next meeting is Nov. 28 at 8 p.m. and former students are being encouraged to come out and take part in what could be one of the most enjoyable weekends of their lives.

Much planning needs to be done from contacting old school chums around the world, to helping just by signing up to let the committee know you'll be there.

A special information and pre-registration booth for that purpose will be set up in Milton Mall this Thursday and Friday in the evenings and all day Saturday.

In the meantime, the committee is issuing a special appeal for old yearbooks, pictures and memorabilia like sweaters, medals and other school items for a very special yearbook the group plans to assemble.

All items borrowed will be returned in the same condition they were received.

Wind changing Reed contends

The winds of change are blowing in the province, Julian Reed MPP told a gathering of Liberals at the Halton-Burlington Provincial Association annual meeting.

Premier Bill Davis' popularity always has been ahead of that of his party, Reed claimed and predicted a new leader will take the party farther to the right.

Mr. Reed maintained the statements from Ottawa which Mr. Reed claimed could mean the loss of 5,000 jobs, would be a factor in the provincial election.

The Liberal MPP said Halton is being assaulted because of its rural location.

The Natural Resources Critic pointed out the Tory government has designated three sites in Halton for potential toxic waste disposal, and assured the Grits he had been working hard to deal with the Ontario Waste management Corporation, "with some success." He said he is not only concerned with Halton becoming a toxic waste repository, but with the heavy industry which will be attracted to a rural area.

ENERGY from WASTE

You are invited to attend a PUBLIC MEETING to discuss a proposal from Petro-Sun and SNC Inc. to build a 400 ton per day model plant that will burn garbage and produce electricity.

PLACE: Blakelock Secondary School Gymnasium, 1160 Rebecca Street, Oakville

DATE: Tuesday December 4th, 1984.
TIME: 7:30 p.m.

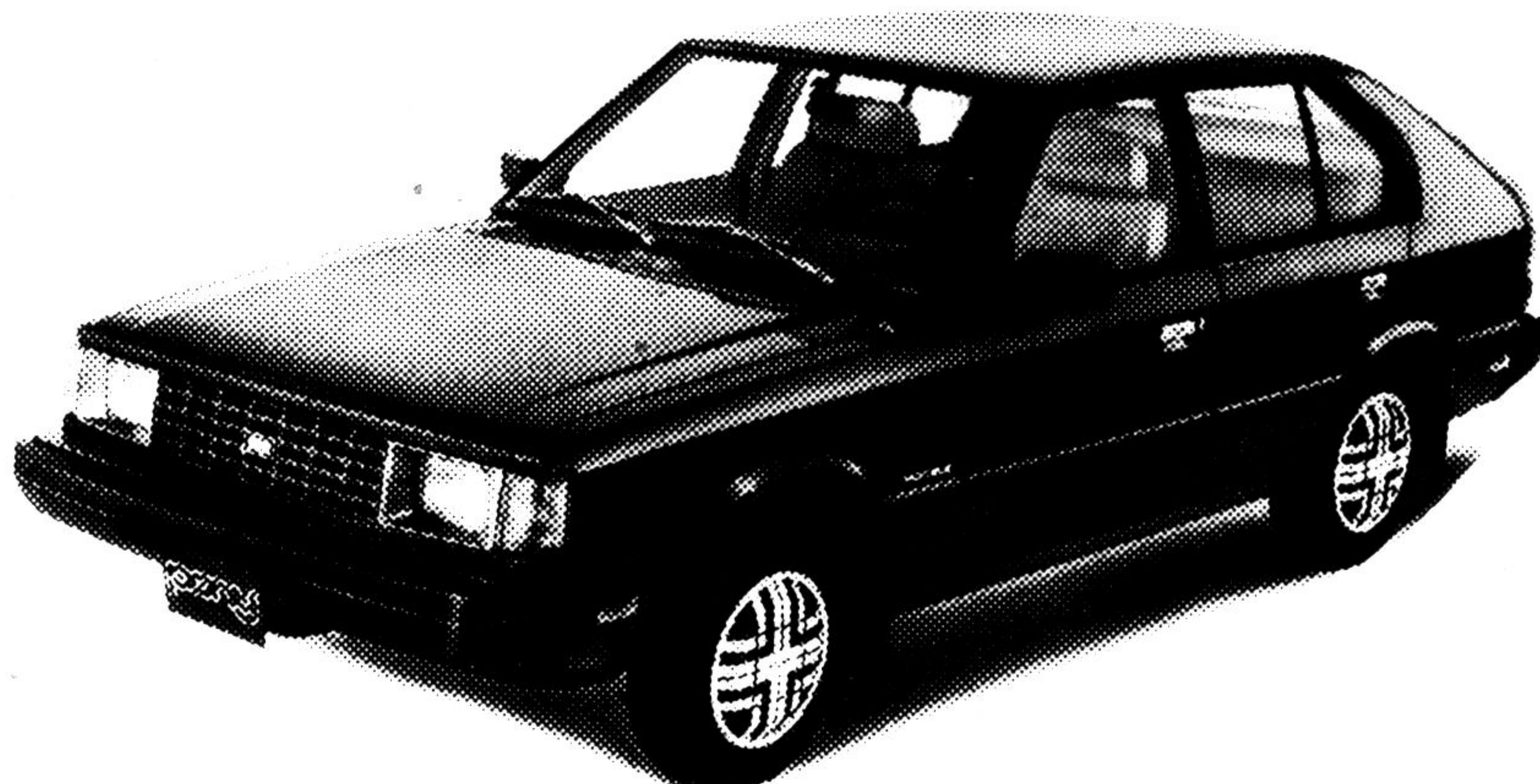
The site for the plant suggested in the proposal was north of the QEW between Bronte Road and Third Line. This land, on the west side of the future Mid-Halton Sewage Treatment Plant, is presently being used for a Waste Disposal Container Station.

Regional Council has requested comments on the proposals as well as alternative locations for the same electricity producing plant. To obtain additional information, or copies of the proposal, please contact Vicky Henderson at 822-2151, Ext. 422 (or 878-8113 from Halton Hills). All comments should be forwarded to the Region by Friday, December 21, 1984.

The Regional Municipality of

Halton

The 1985's ARE HERE!



Amazed by the features. The Pony L has fully reclining front bucket seats, a rear window defroster, full interior carpeting from the tip of the driver's toe to the end of the cargo space. It has Michelin all-season steel belted radial tires, childproof door locks, even a cigarette lighter.

FROM **\$6145*** LEASE **\$169** MTH. PLUS TAX & LIC. 48 MTHS.

HYUNDAI

*PLUS P.D.I. FR & TAX

Pony

CITATION

AUTOMOBILES LTD.

2357 ROYAL WINDSOR DRIVE

OAKVILLE 842-1811