

RE/MAX RE/MAX RE/MAX RE/MAX RE/MAX



RE/MAX

miltowne realty corporation



CALL: KEN & AUDREY NEWELL
OFFICE: 878-2385
RES: 878-5339



TREES, 1 1/2 ACRES AND QUALITY HOME. Custom built architect designed home has 3 large bedrooms (Master has 3 pc. ensuite); super sunken living room with lots of windows and fireplace; family room; dining room; built in appliances in kitchen; 2 car garage. \$142,000. Call Audrey or Ken for viewing 878-5339.

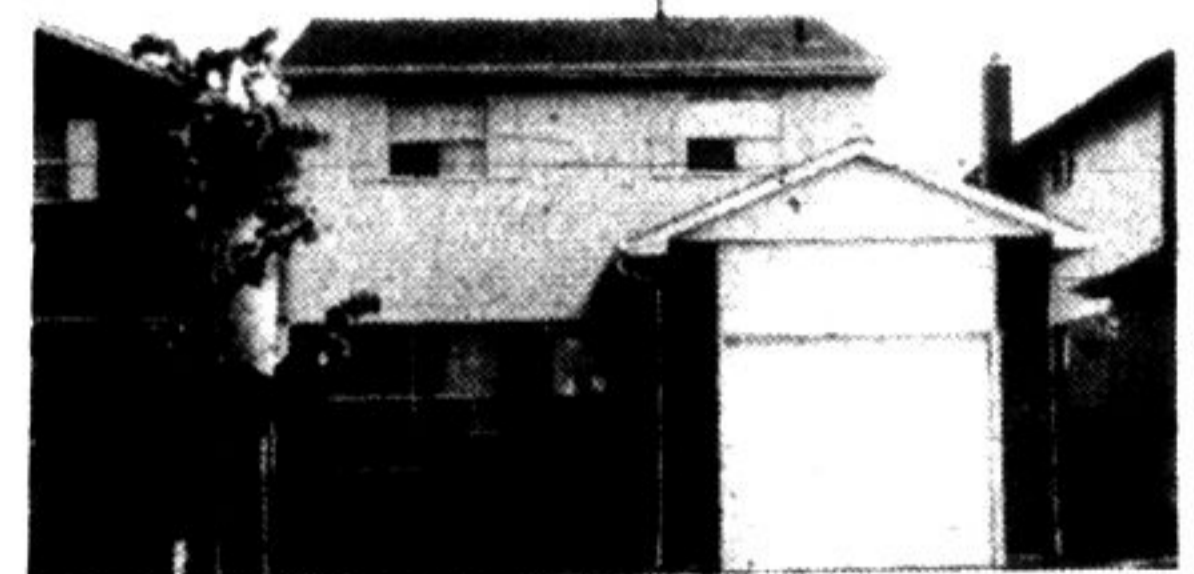


SUPER MORTGAGE AVAILABLE. Quiet court location—super backsplit home with finished rec room, etc. Large lot with inground pool. Vendor will consider holding mortgage for qualified buyer. Just reduced to \$89,900. See it with Ken or Audrey 878-5339.



GREAT FAMILY HOME. Emperor sized master bedroom with 4 pc. ensuite plus 2 king sized ideal for teenagers. Open plan family room/kitchen plus living and dining room. Unspoiled basement ready for rec room etc. Fully fenced back yard. See it with Ken or Audrey 878-5339.

STORES/STORES FOR RENT: Excellent plaza location on good parking and highway exposure in heavy traffic area. Choice from 3 adjacent stores which could be combined. 820 sq. ft., 988 sq. ft. and 988 sq. ft. Asking \$8.00 Net Net. Call Ken or Audrey 878-5339.



PAMPERED FOR PARTICULAR PEOPLE

And every room shows it in this newly listed, 3-bedrm., 2-storey home, ideally located on quiet crescent. Large kitchen; airy living & dining rooms leading to back garden; 2-piece washroom, all on main floor. Finished rec. room with wood-burning stove. Offered at \$79,500. Call Clifford Deathe, 844-2950 or 844-4611.

RALPH F. McCORMICK & ASSOC. LTD., REALTOR
844-2950

Century 21

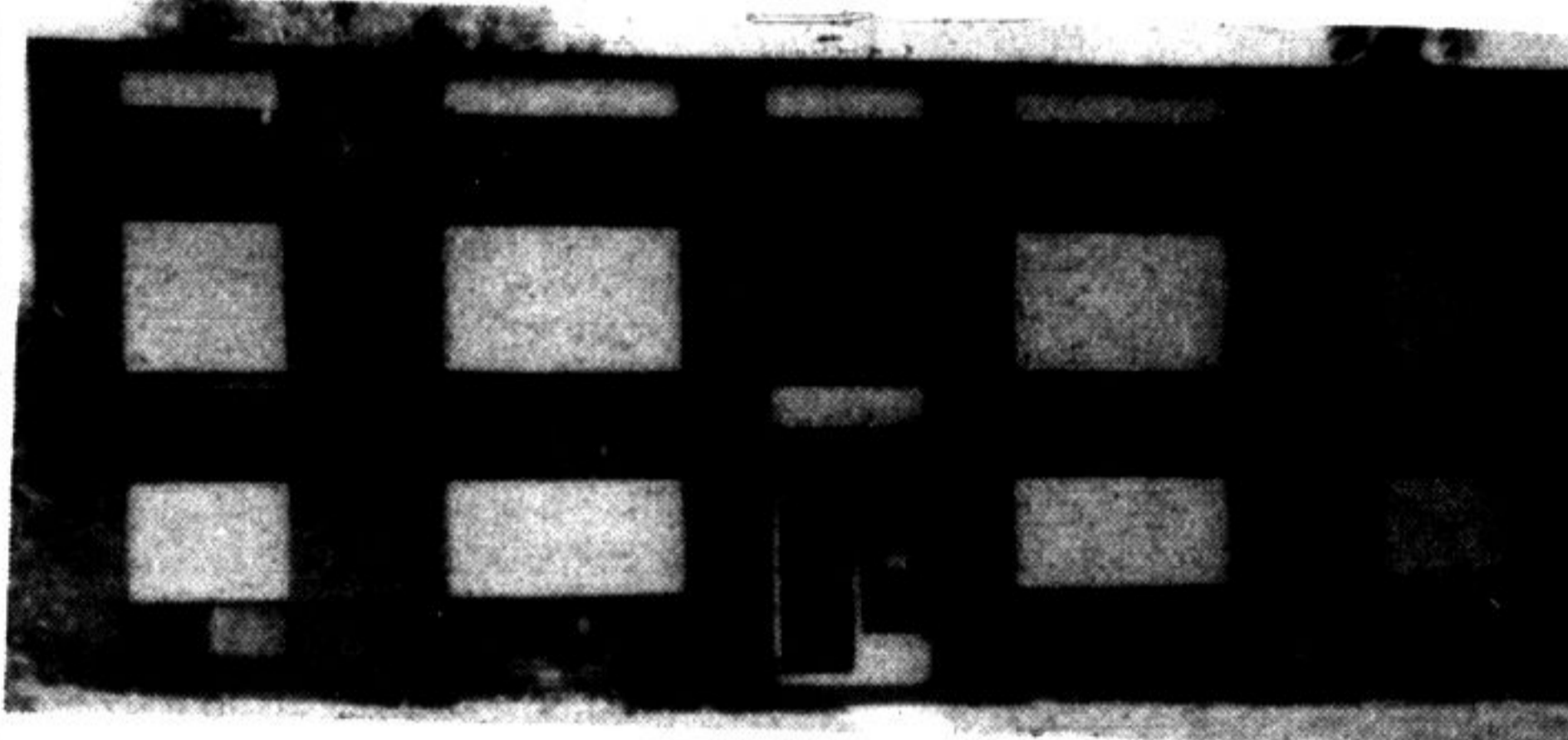
(519) 836-4500

Forest Heights Realty Ltd.
Realtor Member Broker



32 ACRES on Guelph Line 6 miles to 401. Five bedroom quality home, double attached garage. Super steel barn 80' x 40' and fenced fields. Inspect and make an offer.

\$79,900 FOR A NEW HOME IN ROCKWOOD to be built by that "builder of distinctive homes"—Ron Inglis—on serviced lot 66' x 132'. I will show you some homes under construction in the area. The quality is outstanding.

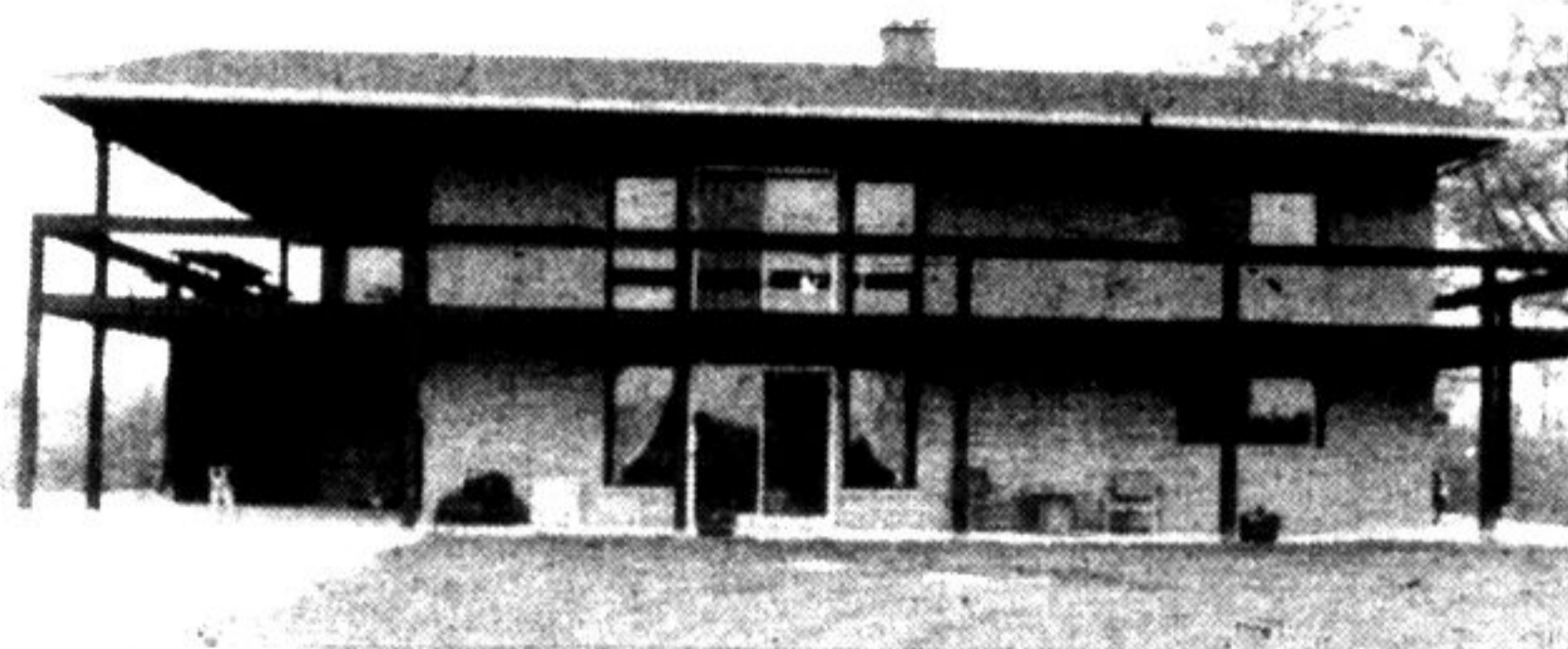


6 PLEX IN GUELPH—Modern building. \$21,000 gross & no vacancies. Excellent location for downtown or University. \$119,900.

CALL KAY MAXWELL

853-0508 or 836-4500

30 ACRES with 4 bedroom, 2 bathroom all brick home. Cathedral ceiling, full wall fireplace, garage with workshop. Pond, 6 acres bush, balance workable. 45 min. to airport—10 minutes to Guelph. \$137,500 and vendor will hold mortgage.



10 ACRES—Super construction. 3 or 4 bedrooms, 3 bathrooms, wrap around deck, family room with fireplace and bar. Barn & fenced fields. Beautifully landscaped.

ARTIST'S STUDIO IN GUELPH has 1000 sq. ft. open space to work in plus ultra modern living quarters with skylights, relaxing tub & more. Don't miss this one. \$59,900.

SEVERAL LOTS available in Rockwood. Surveys and building permits available. All on municipal water and sewers. Lot size 66' x 132'. Prices range from \$14,500 to \$22,000.

REALTY WORLD Colbeck



"QUIET CRESCENT"

Stylish 4 bedroom home. Ideal neighborhood for you and your family, many attractive features include: sunken living area, brick fireplace, large eat-in kitchen and steps away. . . dining area with large bright window. All of this and more just waiting for your inspection! \$95,900. 09



"SPACIOUS SIDESPLIT"

large and bright sidesplit home accented with park-like landscaped grounds, 3 bedrooms, brick fireplace, large eat-in kitchen and all decorated in neutral tones. Enjoy relaxing on your patio around your large inground pool. Call our office today and arrange your personalized tour. \$84,500. 26



"ZONED M-1"

Large lot providing good exposure to a main thoroughfare and offering a utility building, industrial building (30' x 70') and a few feet away a 1 1/2 storey, 3 bedroom home and garage. Call today for full details! \$86,900. 77



"ZONED M-1"

OVER 3400 Sq. Ft. of industrial building situated close to major highways and fronting on a very busy thoroughfare. Ideal location for tradesman shop, storage, assembly, etc. . . Call the experts at REALTY WORLD \$139,900. 45

876-1133

485 MAIN ST. EAST
MILTON