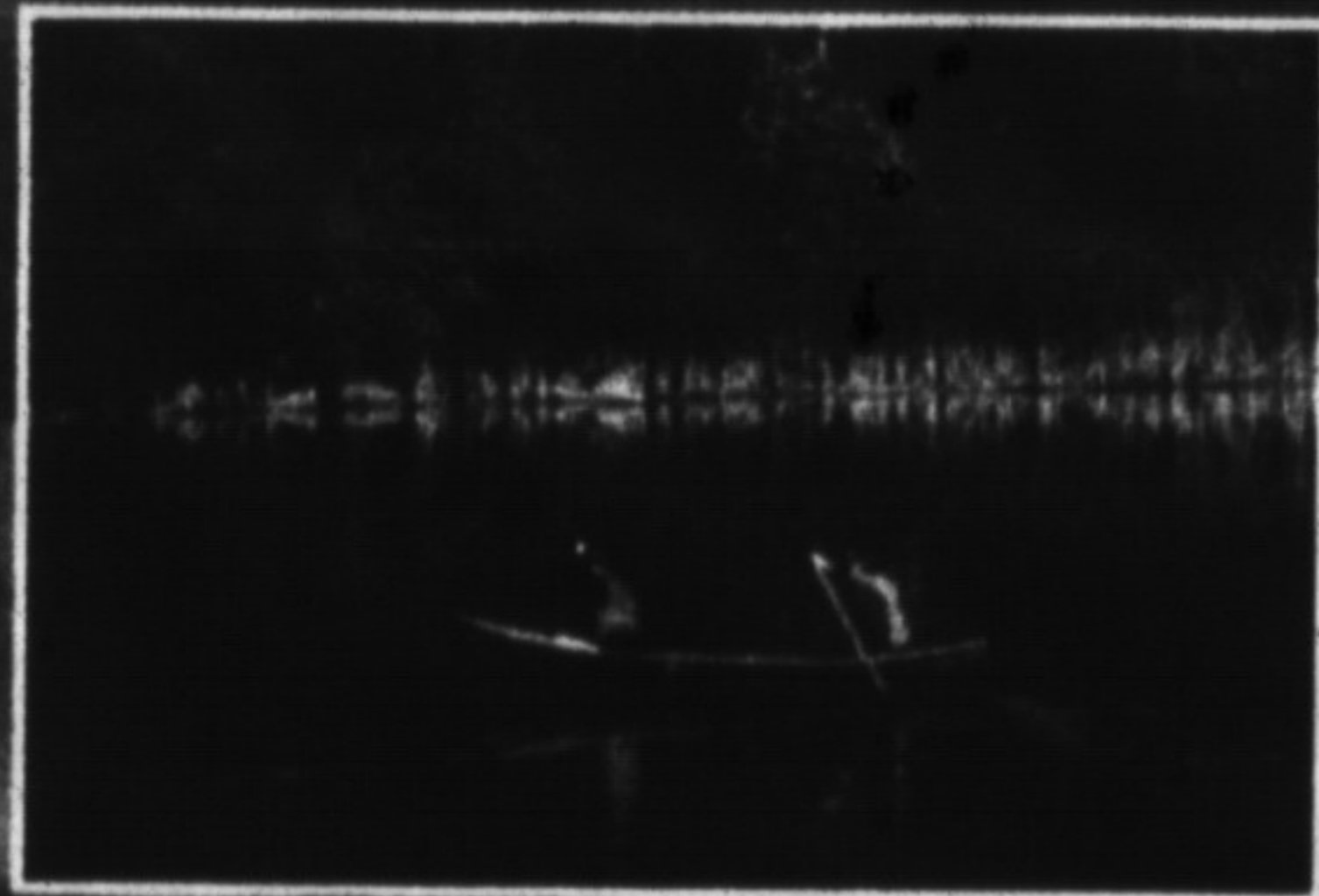


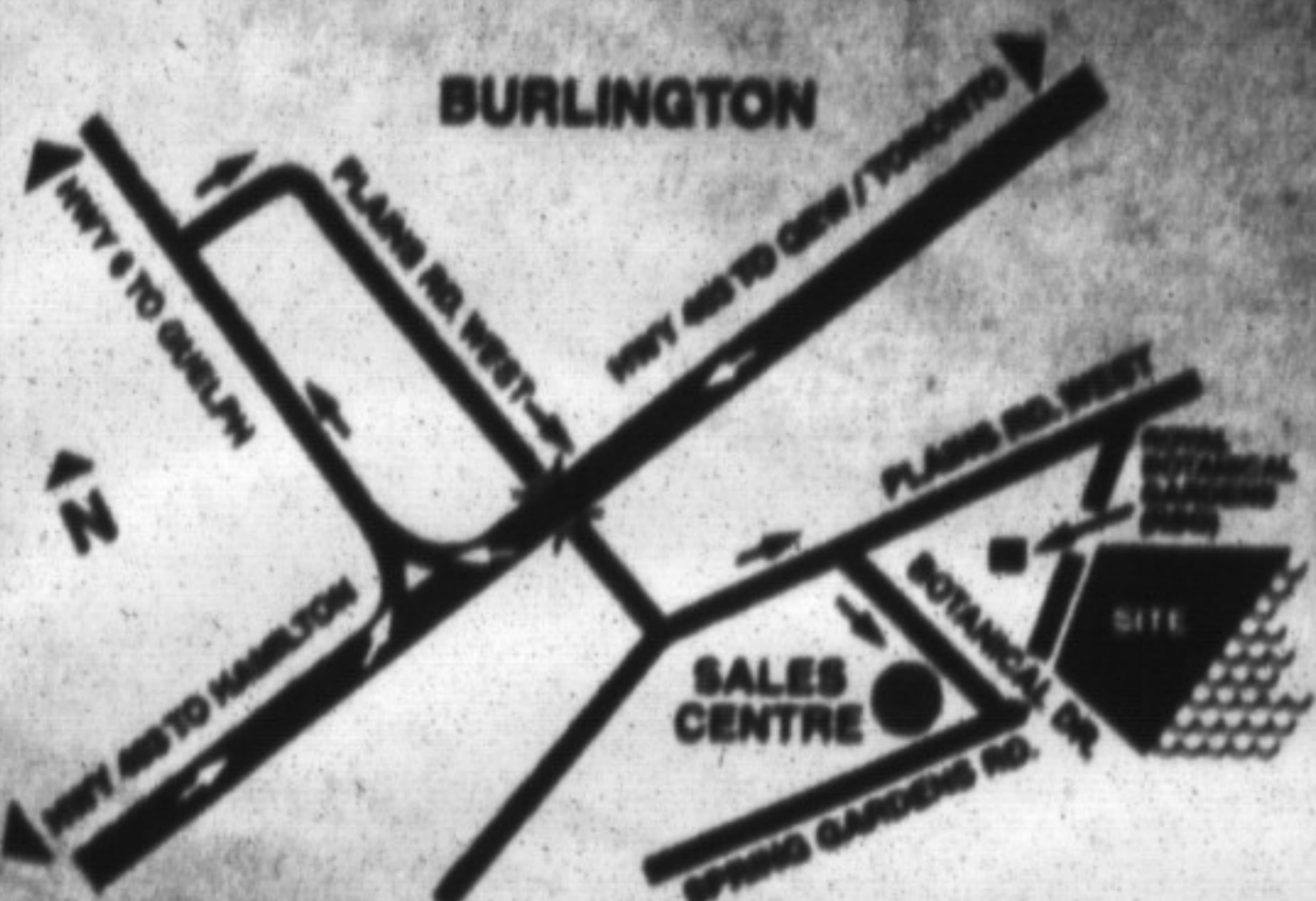
Burlington's Finest Waterfront Community



Imagine... Nothing between you and the bay but the trees.



Based in southern Ontario for over 20 years, North Shore Estates Ltd. is dedicated to continuing and maintaining a tradition of fine "one-of-a-kind" projects by utilizing the finest local tradesmen & suppliers.



Exit Hwy 6 North from Hwy 403, Right on Plains Rd. West Follow the RBG signs to Botanical Dr.

• Sales Centre Now Open •
1010 Botanical Drive
Sales Centre Hours:
Monday - Thursday 1PM - 5PM
Closed Fridays
Saturday, Sunday & Holidays 11AM - 5PM
Or by appointment



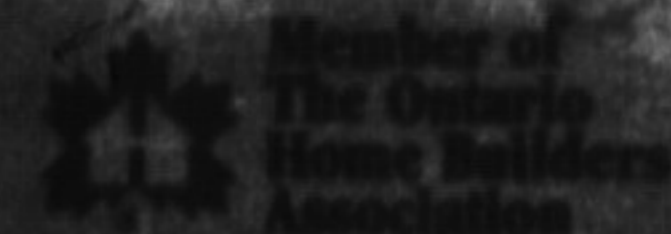
NORTH SHORE

GARDENS

- Adjacent to the Royal Botanical Gardens
- Stone & clay brick
- Driveways with accented interlock brick
- 9' Ceilings on main floor
- Professional Interior Designer consultation*
- Garages with automatic garage door opener
- Pre-wired for security system
- Professionally landscaped

Bungalow & two-storey townhomes priced from **\$149,900** to mid **\$200,000****

905-777-9499



*Actual's control. Prices and specifications subject to change without notice. Some restrictions apply. Brokers' fees.