

NORRICH WEST INC.
SINGLE FAMILY HOMES

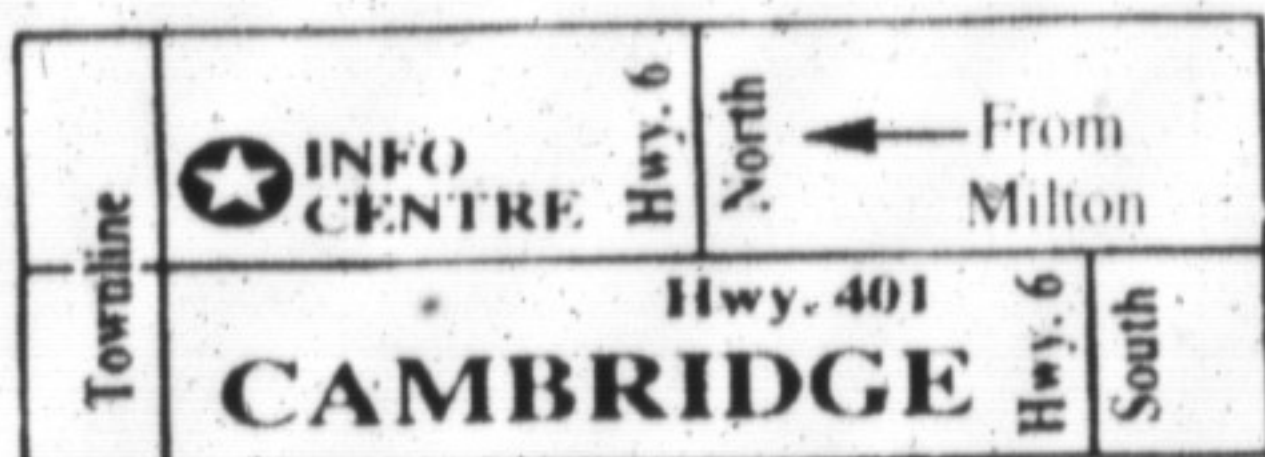
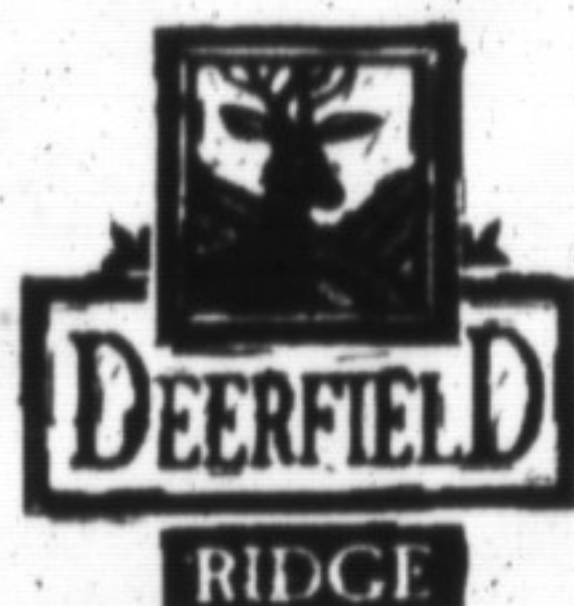
From the **\$120,000's** Monthly payments in the **\$700's**
 With our Mortgage rate



The Willowdale 1455 sq. ft. \$140,900

- New brick detached homes
- Located 2 minutes from the 401
- Beautiful lots now available
- Flexible floor plans
- Minimal closing costs
- COME SEE OUR DECORATED MODELS

\$500 Deposit ... Why Rent?



Call Eileen - Anytime
(519) 658-5973

20 minutes from Milton
 Close to 401
CAMBRIDGE NEW HOME INFO CENTRE at Townline & 401
HOURS Mon-Fri 2-5pm Sat-Sun 12-5pm

easter seal society



The mark of a great agent. **ROYAL LEPAGE**
 www.royallepage.ca **878-8101**



BILL GONCZ *
 Sales Representative
Let Me Do The Leg Work For You!
878-8101

374 WOODLAWN



New on the market! 3 + 1 bedroom finished basement on a great crescent. Large bright kitchen with patio doors out to the rear yard with large pine trees front & rear decks. Double car drive, schools and shopping, etc. close by. Don't hesitate to call for a personal viewing.

I NEED - \$150,000 to \$180,000 Old Milton, prefer bungalow
 I NEED - \$200,000 to \$230,000 home with or without pool.
 I NEED - Condo in Village Parc on the Pond
 I NEED - Country - \$170,000 - \$210,000 any type of home
 If you have anything that matches and are thinking of selling please don't hesitate to call. It is not only my interest to list your home but to sell it also. Let 37 years of town knowledge work for you.
Please call Bill Goncz, Sales representative

FOR RENT - RENT TO OWN SALE



Spacious 4 + 1 bedroom 2 storey large home on one of the most desired streets in town. Backing on to parkland for privacy. This home features a 900 sq. ft. master bedroom with gas fireplace and full bathroom, walkout to large deck overlooking the park with great views of the area. Also features 2 large skylights in the master bedroom. Main level consists of 3 bedrooms, living room with a walkout-off kitchen area with patio doors. All new windows, soffits, eavestroughs, roofs, many upgrades. Basement is fully finished with a large brick fireplace, large wet bar, full kitchen, bathroom. Great for the large family. Contact Bill Goncz, Sales Representative for more details.

FOR SALE - COUNTRY - \$209,900



5 minutes to 401. Right across the road from the Bruce Trail. Very peaceful setting with great views of the country. Double car garage with entrance to the house. All brick home with new upgrades in the last year including carpets, painting of the complete house. Main floor family room with a fireplace and insert, 2 bathrooms, living room, dining room, large bedroom makes this home an excellent value for country living. It even has cable TV and bus pick up right at the end of the driveway for school '85 of an acre. For more information call Bill Goncz.



John Weide
 ASSOCIATE BROKER

Sutton GROUP sutton group-people & properties inc.
 An Independent Member Broker

Your **HALTON-MILTON CONNECTION**
905-844-5000
Relocation Specialist



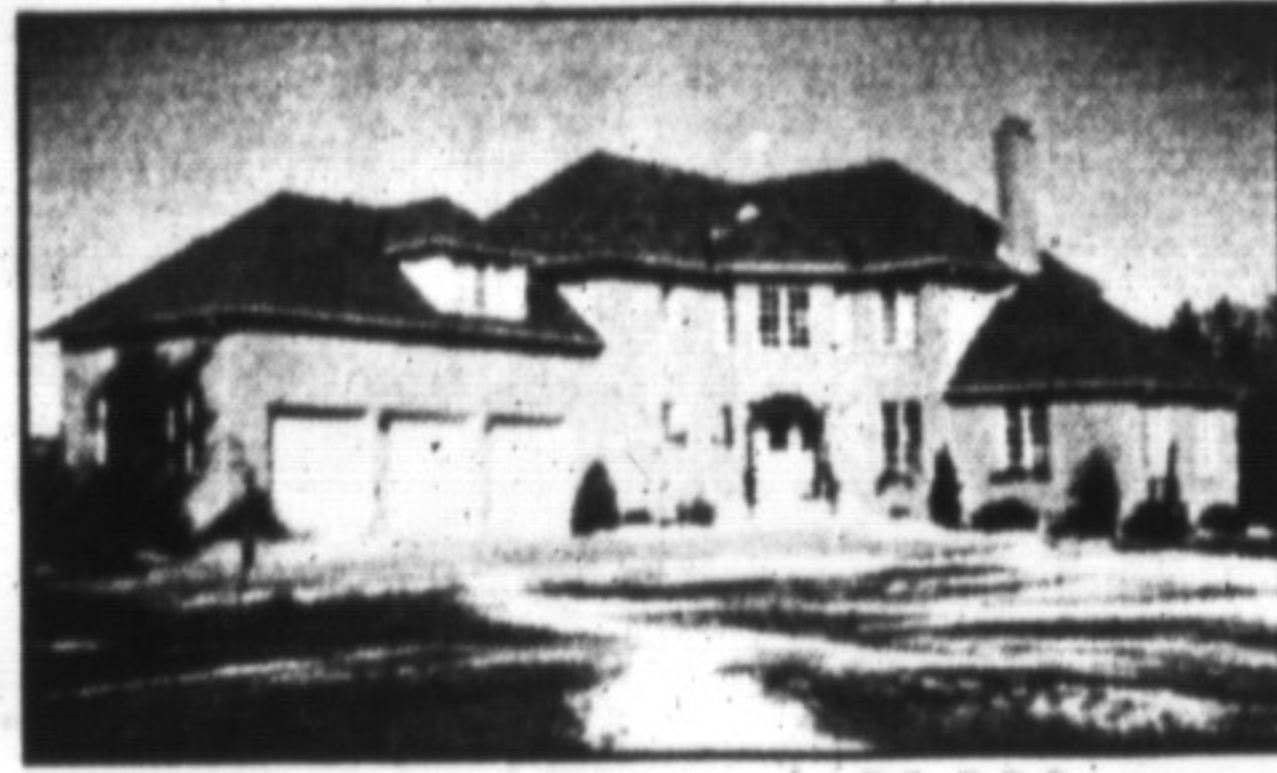
Campbellville Country Estate \$749,000

This quality built home is situated on 5 acres with stone style and Marley roof. Inground pool 43 x 18. Huge hall-style living room two floors high with 4-sided centrepiece fireplace, wraparound staircase, cathedral ceilings. Master bedroom with 5-piece ensuite and sauna, walk-in closet. Oak kitchen, quality finishings. Separate pantry, in-law/nanny suite, main floor. Huge bedroom or studio over triple car garage. Ceilings are higher throughout - all coved. A huge family/party room on the 2nd floor, complete with kitchen. Overlooks centre of home. Covered balcony, decking. Ground source heat. Approx. 6200 sq. ft. S/W of Campbellville. Must see! **John Weide**



Campbellville Country - 10 Acres

Quality constructed ranch, close to Bruce Trail and Crawford Lake on scenic escarpment property. 2 fireplaces. Beckermann kitchen, main floor privacy solarium, ground level family room, den. Parquet floors, many quality upgrades. Beautifully decorated, move right in. Nothing to do circle this listing! **\$319,900. Call John Weide 844-5000**



Country Estate \$499,000

4 bedrooms, nanny/in-law suite, huge master bedroom, circular staircase, main floor family room, double fireplace. Located near #10 Side Road East, at Highway #25. **John Weide 844-5000**



Milton Investment \$299,900

Future industrial land. Just north of 401 on Third Line in Milton. 2.08 acres of valuable land together w/solid built bungalow, well maintained, sep. barn, excellent potential, many uses. **Call John Weide 844-5000**



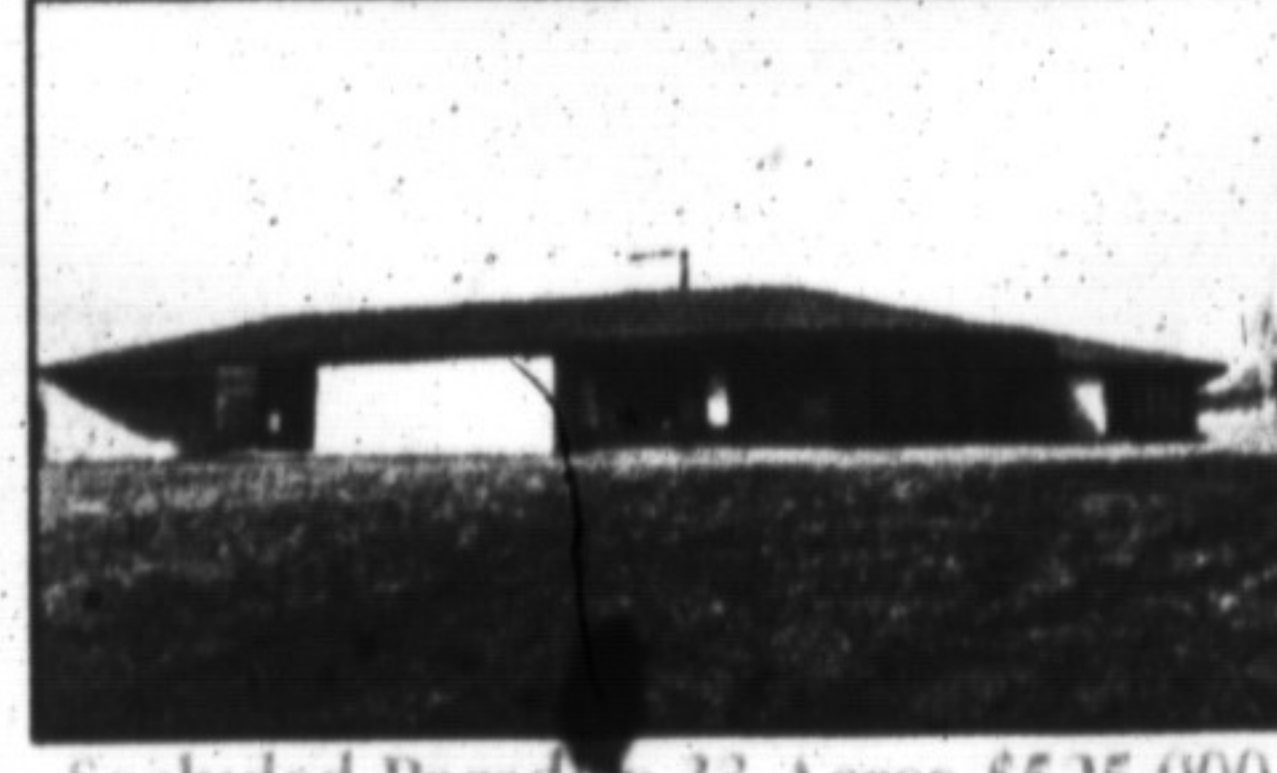
Central Milton

Large 2-storey home with views of the escarpment. 3 large bedrooms, 3 bathrooms. Farm-sized kitchen, large living room, dining room, main floor family room + den. All for **\$199,000. Call John Weide 844-5000**



Milton Quality Plus! \$278,888

Spacious 4 or 5 bdrm. Main flr family rm, 2 fireplaces. Beautiful kitchen, many upgrades, hardwood floors, newer washrooms throughout, finished lower level rec. room with 5th bedroom and sauna room, private lot with wrought iron fence. Call **John Weide**



Secluded Paradise 33 Acres \$525,000

North of Campbellville and Milton on Fifth Line. Contemporary designed ranch home approx. 3800 sq. ft. uniquely designed w/quality finishings, privacy plus w/view for all seasons. **John Weide 844-5000**

Maximize the Opportunity of Selling Your Home:

With exposure of your home-for-sale through the **OAKVILLE, MILTON & District Real Estate Board** plus Sutton Group is a Full Member of **TORONTO Real Estate Board**

You can find us on the internet at:
<http://www.mls.ca> or
 e-mail: Weide@globalseve.net