

The Canadian Champion

BEST HOMES

MILTON, ONTARIO

878-2341

February 16, 1997



\$359,900

RE/MAX

BROOKVILLE - Spacious contemporary bungalow with triple garage and walkout basement. 3 generous bedrooms plus den, main floor family room and laundry, sunken living room and large separate dining room. Situated on a spectacular 2 acre estate lot with large private pond.

RE/MAX MILTOWNE REALTY CORP.
SHARON KERLEY — 878-7777



\$229,000

REALTY WORLD

MINUTES FROM MILTON - 3 YEARS NEW - 3+1 bedrooms, oversized family room, 2 kitchens (1 eat-in), 3+1 baths, AC, high eff. gas heating. Ceramic flooring, 30 oz. carpet & the list goes on.

REALTY WORLD, MILLPOND REALTY INC.
ANTONIO VIDIRI — 876-0633

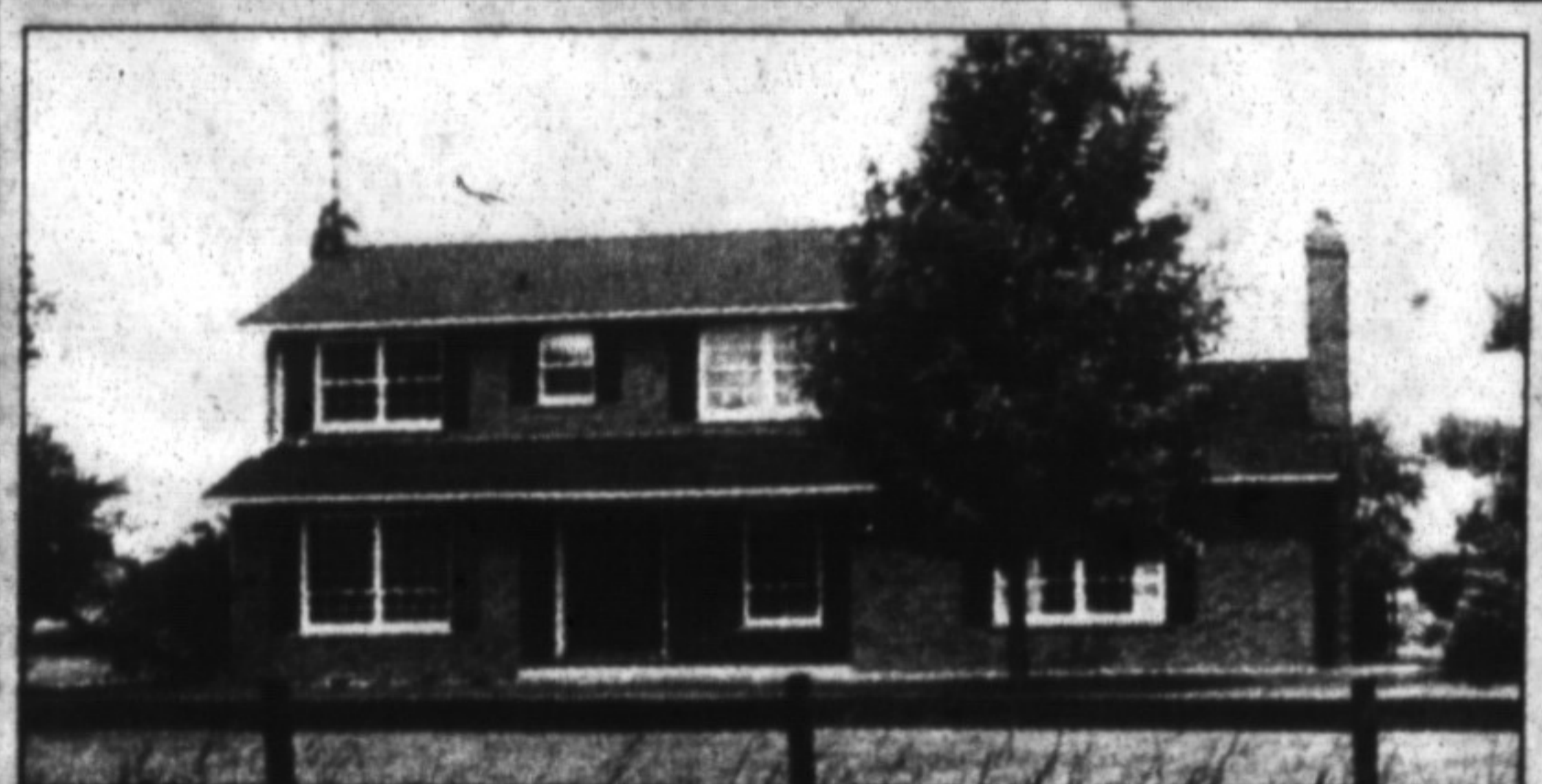


\$229,000

ROYAL LEPAGE

WINTER WONDERLAND - Snuggle up by the fireplace and get comfortable when you own this 3 bedroom Viceroy on 7.55 acres just min. from Campbellville. Great room offers fabulous views of the countryside. Main bath with whirlpool and private ensuite offers the perfect ending to your busy day.

ROYAL LEPAGE REAL ESTATE SERVICES
DEBRA TURK — 878-8101



\$310,000

ROYAL LEPAGE

BETWEEN OAKVILLE & MILTON - One country acre surrounds this beautiful 4 bedroom executive located across from golf course. Gleaming oak floors, large principal rooms, fabulous new white kitchen, main floor office plus family room with fireplace, 2 car garage & inground pool. It's all here!

ROYAL LEPAGE REAL ESTATE SERVICES
VIRGINIA BRAZEAU — 878-8101



\$529,000

ROYAL LEPAGE

BETWEEN OAKVILLE & MILTON - What value & quality! 7.8 acres. 30' x 60' barn/workshop with stairs to loft. Home features quality renovations & restorations retaining character of 1912, all brick 2.5 storey house. Huge principal rooms w/ high ceilings. 20' x 50' inground pool, pond - don't miss out!

ROYAL LEPAGE REAL ESTATE SERVICES
VIRGINIA BRAZEAU — 878-8101



ELEGANT VICTORIAN

RE/MAX

AT AN EXCELLENT LOCATION IN TOWN - this 2.66 acre estate could be your dream home. You will love the grand design, huge principal rooms and beautiful front foyer. This property also offers nanny/maid quarters and a triple car garage. Call today for your private tour.

RE/MAX MILTOWNE REALTY CORP.
JAMES D. SNOW — 878-7777