

Winter Seems To Last Forever. But Our Supply Of Blizzaks Won't.



	List	SALE
175/70R13	\$136.10	\$ 88.00
185/70R14	\$152.60	\$ 99.00
205/65R15	\$198.80	\$129.00
235/75R15	\$181.20	\$117.00

1st 40 CUSTOMERS RECEIVE FREE SWEATER WITH 4 TIRE PURCHASE

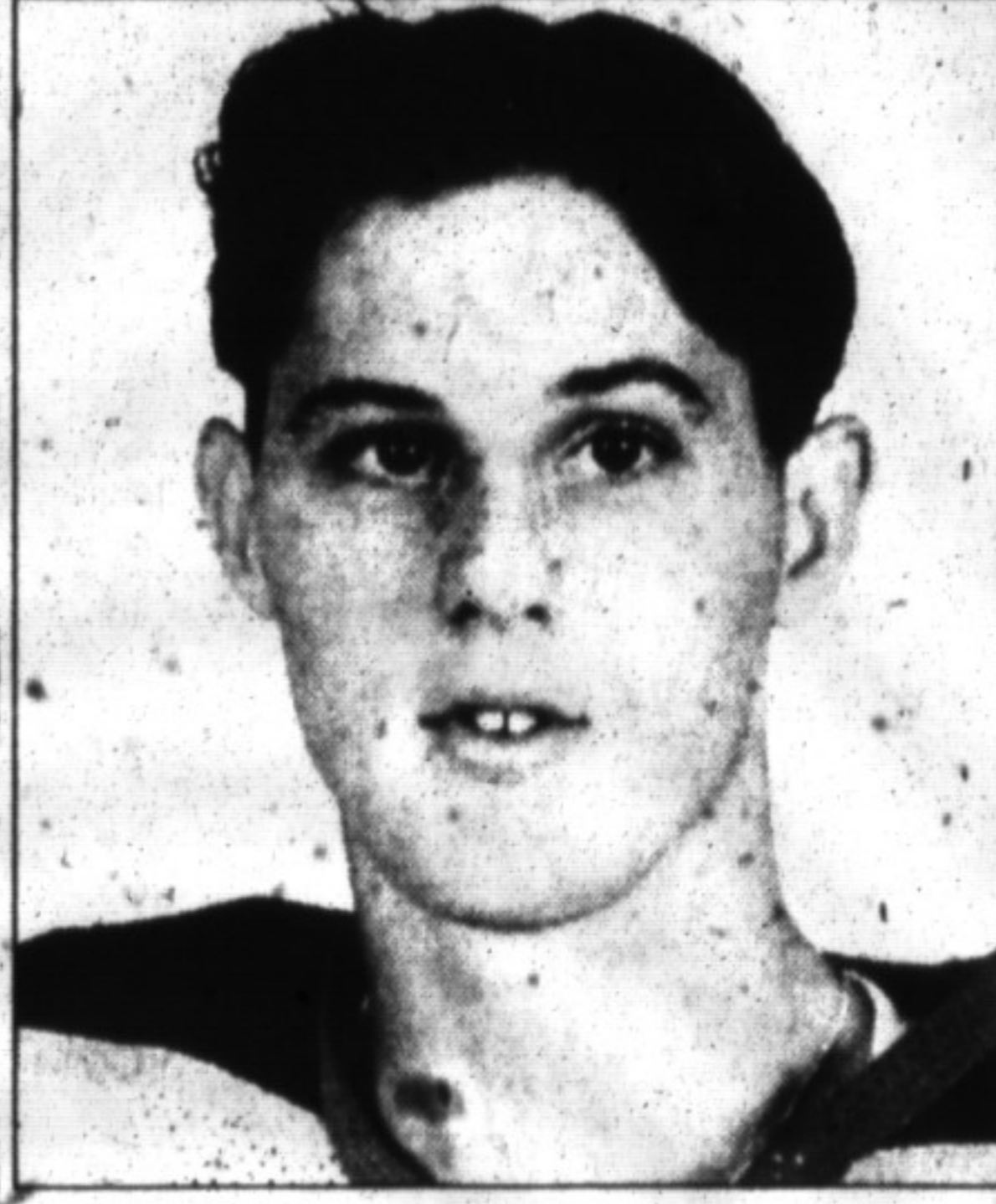
ALL BLIZZAK PURCHASES RECEIVE FREE CHANGEOVER IN SPRING



Miltown Tire

751 Steeles Ave., Milton

878-6785



Doug Janjevich

Janjevich heading for Ivy League school

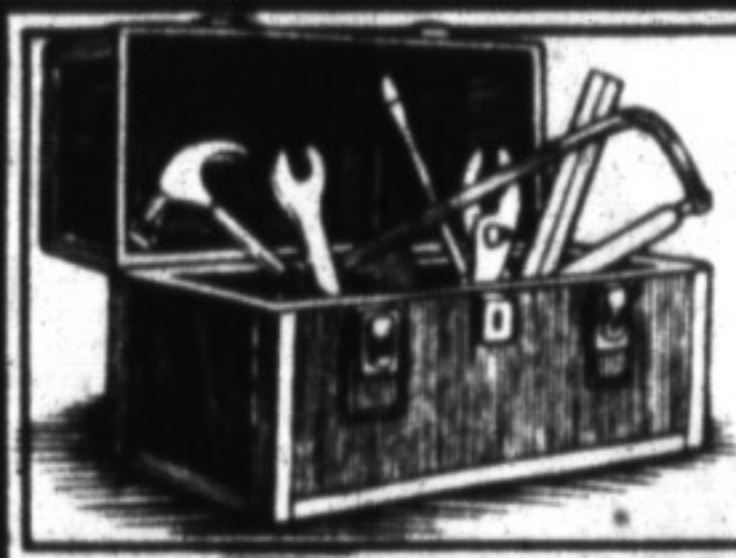
The Merchants' loss will be the Ivy League's gain. Second-year left winger Doug Janjevich represents the latest success story in the local Jr. A hockey team's new education advancement program. The 18-year-old Milton native signed his letter of intent to play for Brown University early last month. "I went down for a visit at the end of November. It's a first class operation all the way," said Janjevich, who had gained the interest of the Rhode Island school last season as a rookie. He currently boasts a solid 85 per cent average at E.C. Drury High School. "They're in Division I, so I'll be playing against all the big name schools." The deal includes a financial aid package — Ivy League schools do not award scholarships — for the duration of his university tenure. The potential for some serious ice time made his decision that much easier. "They'll be losing five senior forwards at the end of the season, so I could see a fair amount of ice time as a rookie," he said. "Coach Bob Gaudet adopts an offensive-minded style that will suit me just fine." "I had considered Princeton as well, but they're only losing a couple of forwards so I probably wouldn't have seen as much playing time there. With the opportunities available on the team and the financial situation, Brown was an easy choice." Janjevich joins rookie sensation Matt Van Arkel on the list of Merchants who'll test their skills in the NCAA next fall. The two will have the opportunity to face Division I veteran Scott Bertoli, also of Milton, now in his second season at Princeton. Merchant assistant GM/college advisor David Dermo is currently helping nine other team members in their quest to play university hockey.

Monarch Basketball

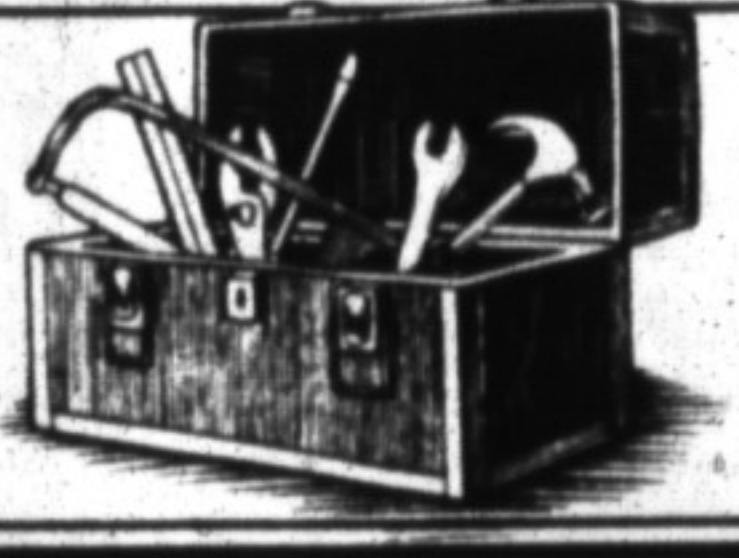
REGISTRATION REMINDER
We are still accepting registrations for our Winter House League
Jan. 7 - Mar. 6
@ E.C. Drury High School
Please get your registration in ASAP
Pat and Martha Gleeson
854-2714

Correction

A story on high school hockey in a recent edition reported Milton District High School as being winless so far this season. The Mustangs had in fact beaten the Acton Sabres 6-3 on December 6. The Champion regrets the error, and any associated inconvenience or embarrassment.



WHO DOES IT



ALUMINUM

DELREX ALUMINUM LIMITED

- Aluminum Awnings
- Eavestroughs
- Roofing
- Siding + Fascia
- Canopies
- Storm Doors
- Windows
- Softlit in Living Colours

Also a full line of replacement windows
877-5383

CONSTRUCTION

- Additions • Bathrooms
- Custom Homes • Basement Finishing
- Renovations or any repair to your house

20 Years Experience
905-878-7208
ALLYN CONSTRUCTION LTD.
5173 Fifth Line, Milton

LOCKSMITH & SAFEMAN

AIM
Lock & Safe Ltd.

24 HOUR SERVICE
Tel: (905) 878-5080 Fax: (905) 878-4798

METAL SALES

MILTON METAL MARKET AND FAB-WORLD

WHOLESALE AND RETAIL METAL SALES
METAL CUT TO ANY LENGTH
FABRICATION AND WELDING SHOP

TEL: (905) 875-1759 581 McGEACHIE DR., UNIT 5
FAX: (905) 875-3825 MILTON, ONTARIO
TOLL FREE: 1-800-387-6279 L9T 3L5

APPLIANCE PARTS SALES

M.A.R.C.H. MECHANICAL LTD.

PARTS FOR Washers • Dryers • Ranges • Freezers • Refrigerators • Dishwashers

785 Main Street East 876-1138
Across from the GO Station

CONTRACTORS

r.m. contracting ltd.

- Additions
- Rec Rooms
- Decks

Big or small we do it all!
878-8625

MASONRY

SHER-BOND MASONRY

- Block Foundations
- Chimney Repair
- Retaining Walls
- Fireplaces
- General Masonry Work

Call Steve McDougall
878-4196

SEPTIC PUMPING

SEPTIC TANK PUMPING Robert Noble Ltd.

- 180 ft. of hose for crossing lawns.
- 3 radio dispatched trucks to serve you.

Don't wait for trouble - Pump before it's too late!
(Should pump at least every 3 years)
Never use coloured or double ply toilet paper.
819-653-0500 Acton
Answering Service 878-6869
OVER 20 YEARS EXPERIENCE!

CABINET REFINISHING

GORD'S Kitchen Saver

Kitchen Cabinet Refacing
Cabinet Additions & Countertops
New Custom Kitchens
876-0147
Free Estimates!

Since 1986

COUNSELLING SERVICES

Individual and Group counselling sessions available for issues concerning:

- self-esteem • anger and grief
- conflict resolution • problem solving
- personal growth

Counselling provided for Women, Men, Adolescents and Children
Donna L. White Milton/Guelph (905) 878-6358

PROBATE OF ESTATES

PROBATE OF ESTATES

- sensitive and caring assistance
- legal services for all aspects of probating the estate of the deceased
- all estate services from time of death to final distribution of the estate are handled by our senior lawyer with over 22 years experience

Furlong Collins
Barristers & Solicitors
64 Ontario St. N. Milton
L9T 2T1
ph: 878-8123 fax: 878-2555

evening and weekend appointments available

COMPOSING/TYPESETTING

Let our Champion Team of Award Winning Professionals help you

- Full Design & Production of Camera Ready Art
- Electronic Page Design

Ideal for Flyers, Newsletters, Brochures, Price Lists, Catalogues, Business Cards, Forms, Letterheads, Resumes & Menus

The Champion 878-2341
191 Main St. E.
FREE ESTIMATES

HEATING

M.A.R.C.H.

- Water Furnace Systems
- Heat Pumps - Air Ground
- Water Sources
- Central & Room Air
- Gas Propane and Electric Furnaces
- High Efficiency Air Filters & Humidifiers

785 Main Street East
876-1138 (Service) 875-2700 (Sales)