



VIRGINIA BRAZEAU *RM
Sales Representative
(905) 878-8101

"It's good to know someone
who knows and cares"

ROYAL LEPAGE

ROYAL LEPAGE REAL ESTATE SERVICES

To all my
clients,
customers and
friends...

wishing you a
Blessed
Christmas
and a
Happy
New Year!



Officer charged after high-speed chase

• from page 16

bellville, gained community-wide attention when he led searchers to a fallen Mr. Thomson, who was found in the woods near his Campbellville home. Topnotch never left his 75-year-old master's side during the five-day ordeal, which ended when searchers heard his barking.

1996 IN REVIEW

• A Halton Regional Police constable faced a charge of careless use of a firearm following an investigation by the province's Special Investigation Unit (SIU). SIU director Graham Reynolds said he had an "honest belief upon reasonable grounds" that the four-year veteran constable allegedly "did, without lawful excuse, use his firearm in a careless manner." The investigation was launched after a high-speed chase from Burlington to Milton. When the vehicle was finally stopped and two Hamilton teens refused to get out of the car, the constable used his revolver to break a car window, and the pistol discharged. As a result, one of the youths sustained a minor gunshot injury to his forearm.

• More than 2,000 people packed Bishop Reding High School — some waiting more than two hours — to help the parents of Deidre Scholtz find a bone marrow match for their ill five-year-old daughter. Local workers contributed to the cause by driving patrons in a shuttle bus from Milton Mall to Bishop Reding, and many stayed until 9:30 p.m. to close the building. "The community has really come out in full force and adopted, so to speak, my daughter," Clem Scholtz, Deidre's father, said from his Satok Crescent home. "To many people, the face of my daughter represents a parent's worst nightmare." Financial support for the Scholtz family, in their efforts to find a bone marrow match, were equally impressive. Donations by businesses, service clubs and private citizens forced the couple to set up a fundraising committee to manage all the fundraisers and special events in support of Deidre.

• see page 24

**JOHN (JP)
PEARS**
SALES REP
CALL:
878-6859



**RE/MAX MILTOWNE
REALTY CORP.**

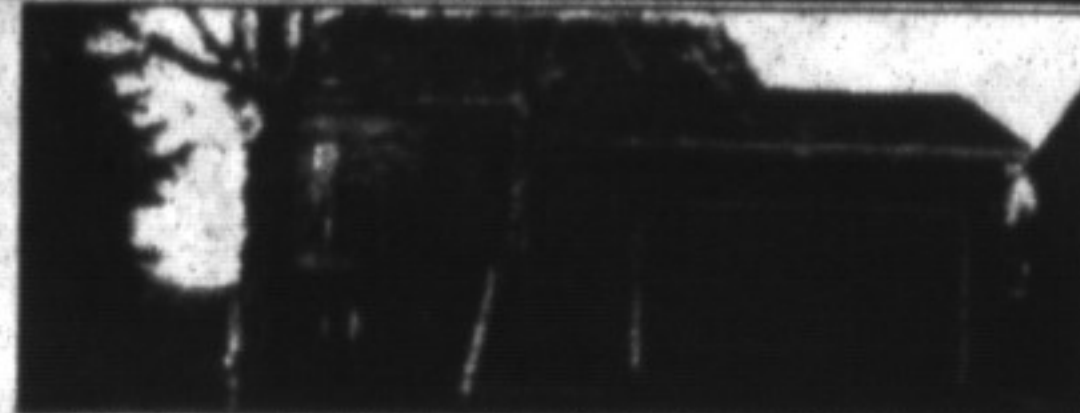
E-mail me at JPI@globalserve.on.ca

SANTA'S GLORY



Yes, this could be your perfection, roughly 3/4 hour from the airport on 2/3 of an acre, this raised style bungalow offers over 4200sq.ft. of living space, 4 bdrms., huge main level family rm. w/ FP, gorgeous oak finished office/study, triple car garage, & much more. A MUST TO SEE. \$389,000.

STOCKING STUFFER



Try this on for size, 3 bdrm, back split, main floor family room w/ fireplace & walk out to patio & I/G pool, upgrades incl. washrooms, carpet, kitchen, wood garage door, roof in '96, double car garage w/ auto opener, finished basement, huge lot, \$214,900. Call me to view this mint home.

THE TREES ARE WAITING



Luxury throughout, pine finished family room with gas fireplace, oak finish in the study, very formal dining & living rooms, gorgeous European eat-in kitchen, huge sun/torrida room, 3 large bedrooms, double garage, all on over 2 acres of breed rolling land. \$324,000. Call to view.

Milton's

BEST HOMES

A METROLAND PUBLICATION

ROCKWOOD

2 Models Open

\$199,900 - 116 Lou's Blvd.

(rep. on site)

\$229,000 - 138 Lou's Blvd.

(under construction)

Hours: Sat. & Sun. 2-4 p.m.
or call collect

BRAZOLOT HOMES

Days 0-519-836-2593

Evenings 0-519-822-3363



Please give
generously
to The
Champion's
Christmas
Bureau
Fund

There's No Place
Like Home
For The Holidays



Here's hoping your
1997 is filled with joy.

Very best
wishes to all.



Bill Laurie
Sales Representative

878-4944

SOLD
New All (95)
REALTY - REALTOR
878-4444

**Better
HOMES**



Best of
the Season
to all our
clients & friends
Gary & Glen Thomas



Glen Thomas
Associate Broker
878-7777



MILTOWNE REALTY CORP.
22 ONTARIO ST. S.

878-7777



Gary Thomas
Broker/Owner
Res. 875-3700