

The Canadian Champion

BEST HOMES

MILTON, ONTARIO

878-2341

December 11, 1996



\$549,000

ROYAL LEPAGE

7.4 ACRES - Oakville/ Milton location!! Fabulous 1912 2.5 storey home! Quality renovation retaining original wood & character. Victorian verandah, ground source heating. 2 level garage/barn - 30' x 57'.

ROYAL LEPAGE REAL ESTATE SERVICES
VIRGINIA BRAZEAU — 878-8101



\$377,000

ROYAL LEPAGE

SOUTH/EAST OF MILTON - Quality brick home approx. 3400 sq. ft., hardwood floors, 3 storey circular oak staircase, large greenhouse kitchen, french doors, oak trim. It's just beautiful inside and out. Fabulous location. No disappointment. Just call for further info.

ROYAL LEPAGE REAL ESTATE SERVICES
VIRGINIA BRAZEAU — 878-8101

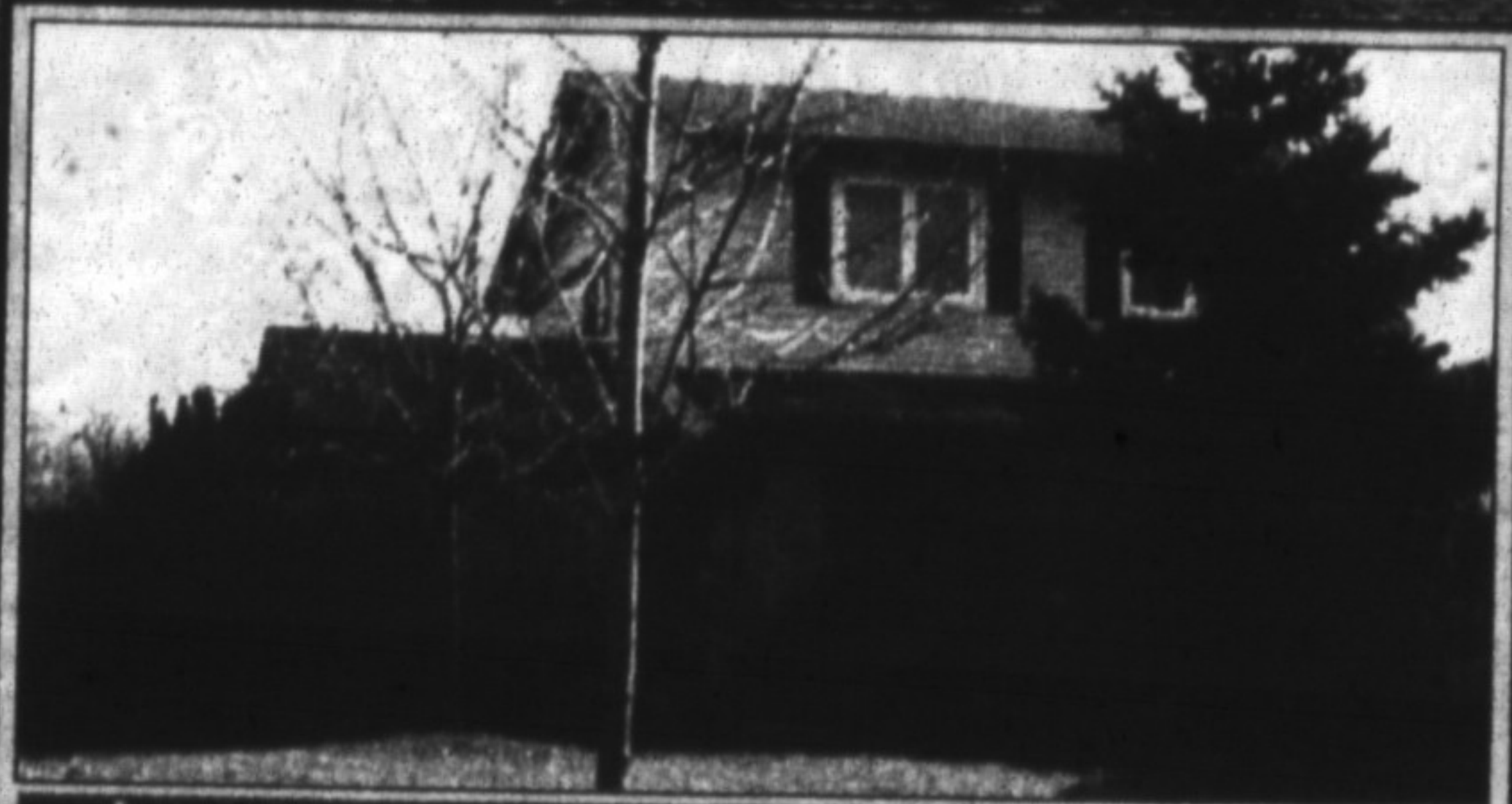


\$149,000

RE/MAX

WITH AN EASY WALK OF THE MALL & DOWNTOWN - this home has an attractive, eat-in kitchen with fridge & stove included, good sized living room, a recently renovated bathroom, and is set on a pretty lot with mature trees.

RE/MAX MILTOWNE REALTY CORP.
JEAN SNOWDEN — 878-7777



\$184,900

RE/MAX

4 BDRM, 2 BATH, 2 STOREY HOME - New windows, new roof, new fencing, 1/6 pool, set in large yard, located close to schools and parks. Beautifully renovated huge kit. Don't wait. Quick closing available.

RE/MAX MILTOWNE REALTY CORP.
CAROLE D. BUDWORTH — 878-7777

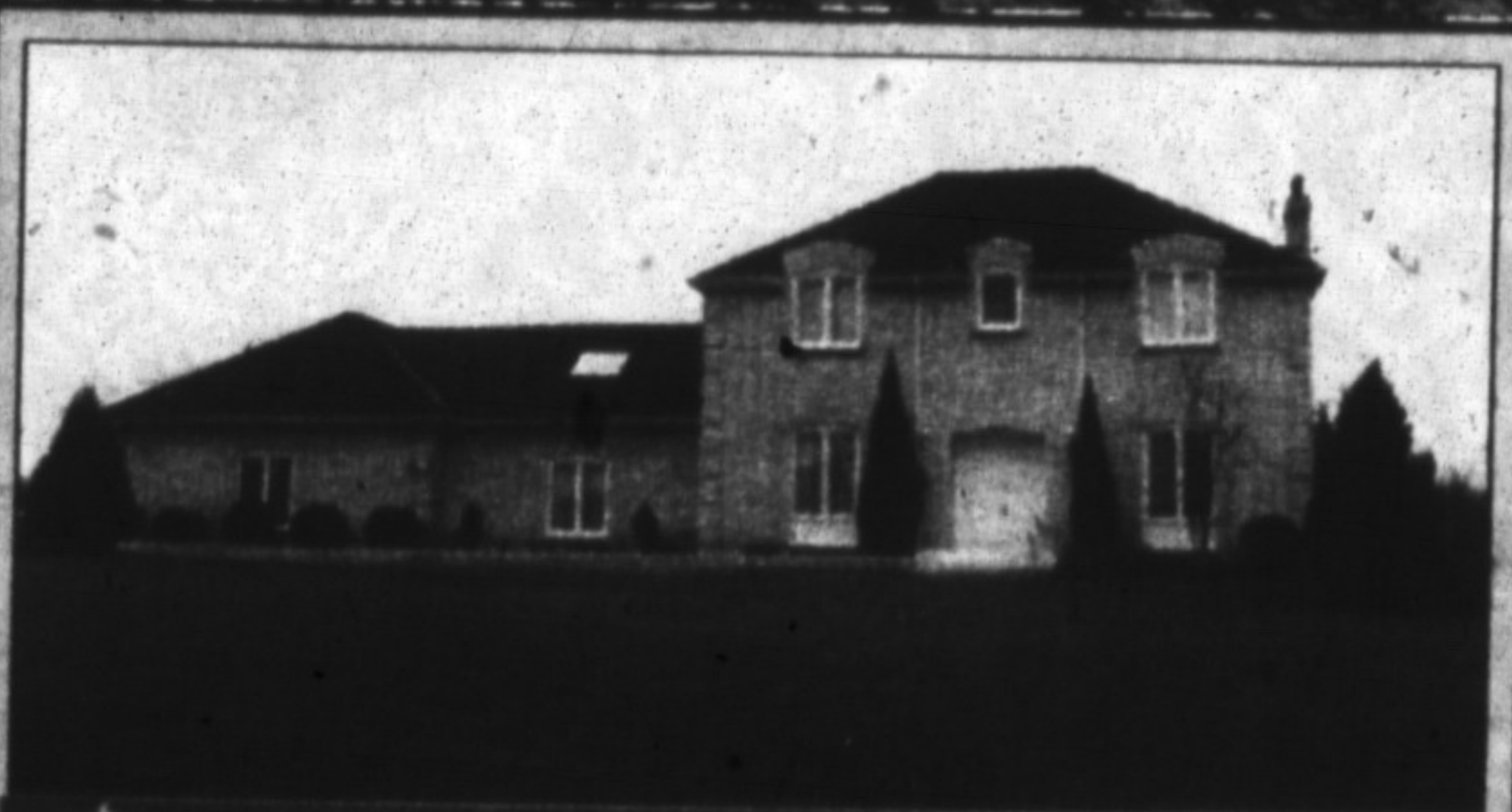


\$385,000

RE/MAX

9.8 ACRES OF TRANQUILITY. Well treed, barn with 5 stalls. Large 4 level side split. Privacy plus! Tranquil, peaceful, bird lovers paradise. Minutes to Kelso, 401, Bruce-Trail. <http://www.mls.ca> For more information or to view, please ask for:

REALTY WORLD, MILLPOND REALTY INC.
STEWART HADDON — 876-0633



\$395,000

RE/MAX

CAMPBELLVILLE BEAUTY - Campbellville executive finished on all three levels. Gleaming dramatic neutral décor, walk-out lower level ideal for in-law suite, triple garage, den, Florida room, dining room for large dinner parties. Huge deck and on an acre right in the village. A real stunner.

RE/MAX MILTOWNE REALTY CORP.
ANNE TAYLOR — 854-9833