

www.royallepage.ca
ROYAL LE PAGE

VIRTUALLY EVERYWHERE

Visit us on the Internet or call a Royal LePage sales representative today to discover the benefits of buying and selling with Royal LePage.



878-8101



DOUG HOWDEN
Sales Representative
878-8101



\$329,000
OPEN HOUSE SUN 2-4
New home in the country, 2200 sq. ft. home with 4 bdrm. on approx. 1-1/2 acre lot. Main floor F.R. with adjoining kitchen makes this a terrific family home.

ESTATE SUBDIVISION LOTS. 1.48 - 21 acres starting at \$94,900. Build your dream home.



\$187,500
Affordable older home in the mature area of town. Come see the best of the old and the new. Many upgrades and features. Call Doug for an appointment.



VIRGINIA BRAZEAU *RM
Sales Representative
878-8101

It's good to know someone who knows and cares!



\$310,000
1 ACRE
Fabulous executive east of Milton. Beautiful white kitchen, gleaming Oak floors, main fl. office plus family rm. across from golf course. Just call!



\$299,000 APPLEBY LINE
24 ACRES
Just south of "401". What a great opportunity! Large raised bungalow with full nanny suite including kit. Huge principle rooms including F.R. w/stone F.P. Call for details



SANDY DEL PAPA*
Sales Representative
878-8101

ANOTHER NEW LISTING!



\$159,900. Great starter-home in good neighbourhood (close to schools & parks). Central air, fin. rec. room in basement. Oversize garage (great for storage of bicycles, etc.). Home in need of T.L.C. (painting, etc.). Call today!

**IN-TOWN MARKET IS BOOMING!
IF YOU ARE THINKING OF MOVING
PLEASE CALL ME!**



DEBRA TURK*
Sales Representative
878-8101

COUNTRY COLONIAL!

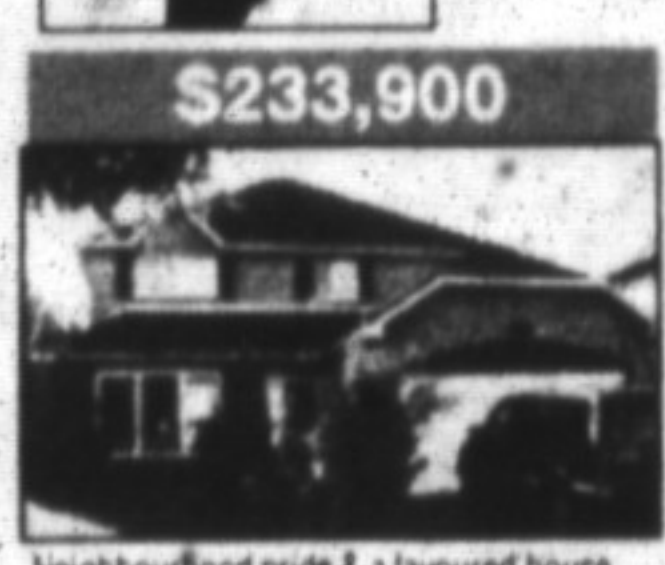


PERFECT FAMILY LAYOUT!
4 bdrms., 3 baths, main floor den, Barzotti custom kitchen overlooking sunken family room with reclaimed fireplace. Separate L.R. and D.R. Elegant curved oak staircase. Lots of built-ins and on 3/4 acre. Only \$235,900. Call Debra now for your personal viewing.

**VACANT LAND • TO BUILD YOUR DREAM HOME •
5 ACRES WITH A NICE MIX OF ASPEN, CEDAR,
MAPLE, N. OF CAMPBELLVILLE, \$146,900.**



EVA GOODING*
Sales Representative
878-8101



\$233,900
Neighbourhood pride & a favoured house a wonderful combination - recent inground pool, 4 huge bdrms, fashionable upgrades throughout. You'll love it!



\$179,900
You would think it magic - so meticulously kept from top to bottom, several upgrades & innovations. Situated on a large lot.



\$325,000
Sprawling bungalow, two family home, very large & accommodating. Perfect location situated on 1 acre.

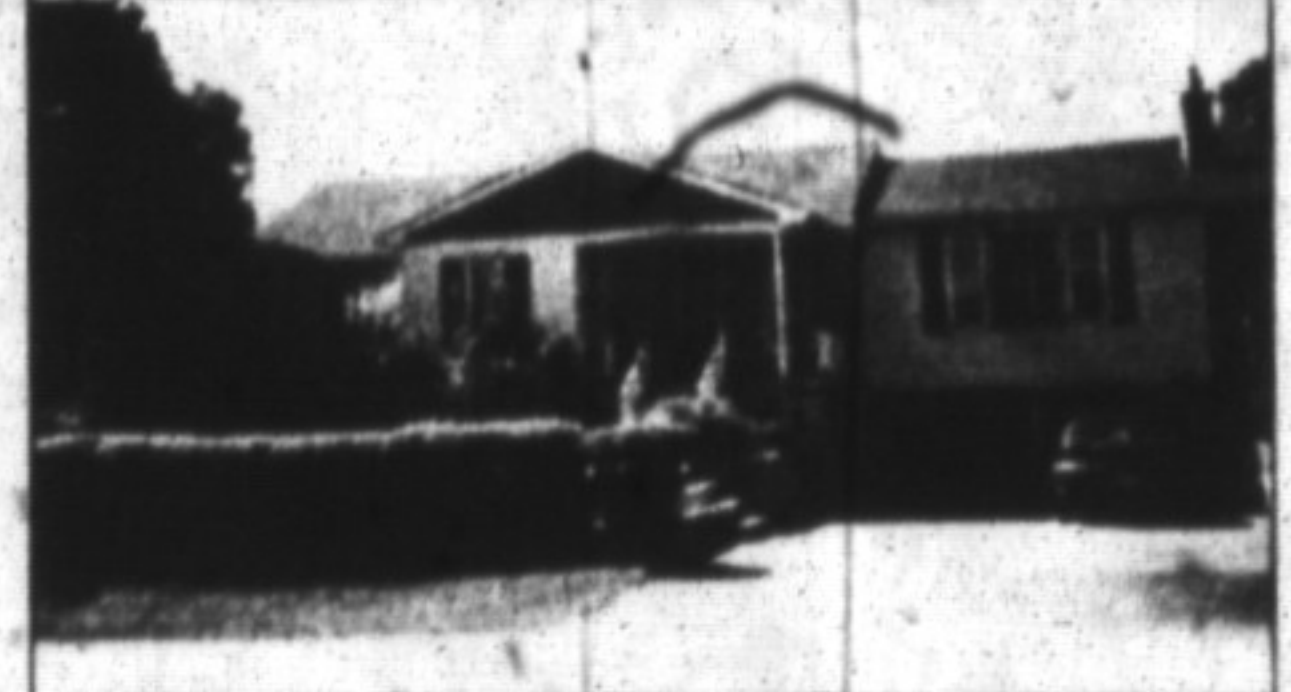


\$192,500
Sturdy & Attractive. 5 levels, regular design, large principal rooms, 4 bdrms in a great family neighbourhood.



BARBARA CROWE
MVA**
Associate Broker Market Value Appraiser
878-8101

**DOUBLE DELIGHT
\$183,900.**



Rare opportunity to buy an affordable bungalow with a potential in-law suite. This tastefully decorated home features a large main floor family room with a gas fireplace and walkout to a spacious private deck. For details call Barbara Crowe** 878-8101.



ED & NORMA PROVEAU*
Sales Representatives
878-8101

"The pair who care!"



\$199,900
4 level backsplitted with inlaw suite potential. Many recent upgrades. For details call today.



\$116,000
Recently upgraded end unit. Park-like setting on one side. Worth a look!



ANGELA SILCOCK* BA
Sales Representative
878-8101



\$156,900
Why pay rent? This 3' bdrm. semi carries for less than rent. New roof in '967. Beautifully finished basement. Upgraded carpets throughout. Move right in. Angela Silcock.



BARB LAFLECHE*
Sales Representative
878-8101

"Delivering the service you expect & deserve"



CHELSEA RD. ESTATES, KILBRIDE
\$749,000
This home displays elegant quality right from the front door. Winding oak staircases, beveled built-ins, soft pastel carpeting and Mexican clay tile accents Barzotti kit., sundrenched F.R. with sloping ceilings & skylights. Luxurious master bedroom and baths. Prof. landscaped 2+ acre lot with 1/2 pool, cabana & decks. An entertainer's delight!



RENOVATED FARMHOUSE ON 68 ACRE INDUSTRIAL LAND
Home extensively updated - electrical, plumbing & drywall. Located just north of Steeles Ave. on Fourth Line with easy 401 access. Suitable for many uses. Live in & run your business from the same location. \$259,900.



VACANT LAND \$144,900
13.7 ACRES just west of Milton on the outskirts of Kilbride. Half beautifully wooded and half open with stream running through property. A perfect private lot for your dream home or hobby farm. Call for directions.



Sales Representative
I'm now list-less & you can see I get results!

\$204,000



SOLD
FAMILY FRIENDLY More than spacious, 2 storey 4 bdrm. set on huge pie-shaped lot with inground pool, 2 decks, cabana and fenced play area. Gas fireplace in newly done rec rm., gorgeous greenhouse kitchen addition, tons of storage, and more than ample closet space. Upgrades galore. A real beauty in Dorset Park.



\$193,900
SOLD
ALL BRICK 3 bedroom bungalow is set on a large private lot. Spotlessly clean throughout with neutral decor. Finished rec room with woodburning fireplace, extra 4 pc. bath plus 4th bdrm. or at home office space. Many recent upgrades. Ideal for empty nesters.



PETRA SCHWABE* BA
Sales Representative
878-8101



ROOM TO ROOM
Pretty 10 acre property with pond. Spacious 12 room home, in-law apartment potential. Shed. Only minutes north of Milton. \$259,900.



CAMPBELLVILLE INVESTMENT OPPORTUNITY
Century home, triplex with 3 spacious apts., sep. commercial bldg., excellent 1st mortgage & vendor financing available. Now \$239,000.



SANDI KINSALE*
Sales Representative
878-8101

SOLD - \$179,900



DORSET PARK BACKSPLIT - new windows, roof, reshingled, upgraded broodroom, shows extremely well. Oversized lot. Listed & sold by Royal LePage in just nine days. If you would like the same fast, efficient service, please call Sandi Kinsale.



NEED A WORKSHOP - \$219,900
Then look no further! Located in the Village of Campbellville, features gorgeous ravine lot with stream at rear, large 800 sq ft heated workshop/garage. Home is very spacious, with finished basement and large loft area ideal for nanny or private master bedroom. \$219,900.

ONTARIO STONE HOUSE + 6 ACRES



NEW LISTING
Gracious home circa 1849 with beautiful woodworking and wide plank floors. Attractive 2-storey addition features sunroom, country kitchen & large master with ensuite. Excellent location south of Milton \$339,900.

HOBBY FARM/2.7 ACRES



Convenient location between Milton & Georgetown, only minutes to Hwy. 401. Pretty 3 bedroom bungalow, excellent out-buildings, workshop and 48' x 32' barn. \$249,000.

LOTS FOR SALE!!!!



Starting at \$94,900. 14 estate lots in the hamlet of Moffat, just N. of C'ville and Hwy. 401. Picturesque cul-de-sac offers a variety of excellent building sites.



SOLD
VILLAGE PARC ON THE POND. Over 1150 sq.ft. of fine living space. Featuring 5 appliances, storage room or den, 2 bedrooms and 2 baths, extra parking spot and storage locker. Enjoy the lifestyle in Milton's finest condo apt. building.



\$209,000
SOLD
Reduced for you 1st timers! Don't let this home pass you "Buy! Sweet all brick 3 bdrm. bungalow set on private treed 1.3 acre. Bright and roomy plus finished lower level with possible in-law potential.