

www.royallepage.ca  
ROYAL LE PAGE

# VIRTUALLY EVERYWHERE

Visit us on the Internet or call a Royal LePage sales representative today to discover the benefits of buying and selling with Royal LePage.



878-8101



**DOUG HOWDEN**  
Sales Representative  
878-8101



**\$329,000**  
**OPEN HOUSE SUN 2-4**  
New home in the country, 2200 sq. ft. home with 4 bdrm. on approx. 1-1/2 acre lot. Main floor F.R. with adjoining kitchen makes this a terrific family home.  
**ESTATE SUBDIVISION LOTS. 1.48 - 21 acres starting at \$94,900. Build your dream home.**



**\$187,500**  
Affordable older home in the mature area of town. Come see the best of the old and the new. Many upgrades and features. Call Doug for an appointment.



**TERESA MILLS-HALL**  
Sales Representative  
878-8101



**253 - 53 BRONTE**



**741 - 31 WOODWARD**

Thinking of Making a Move. Call Me.  
**HOMES NEEDED FOR QUALIFIED BUYERS**



**SANDY DEL PAPA\***  
Sales Representative  
878-8101



**NEW! NEW! NEW! NEW!**  
**\$179,900.** Treat yourself. View this spacious almost 1700 sq. ft. 3 bdrm. home on an extra deep lot (128 ft.) Features include 3 bathrooms, main flr. F.R. with corner F.P. strip hardwood flooring on main flr. (except kit.) and recent windows. Great value! Call today!



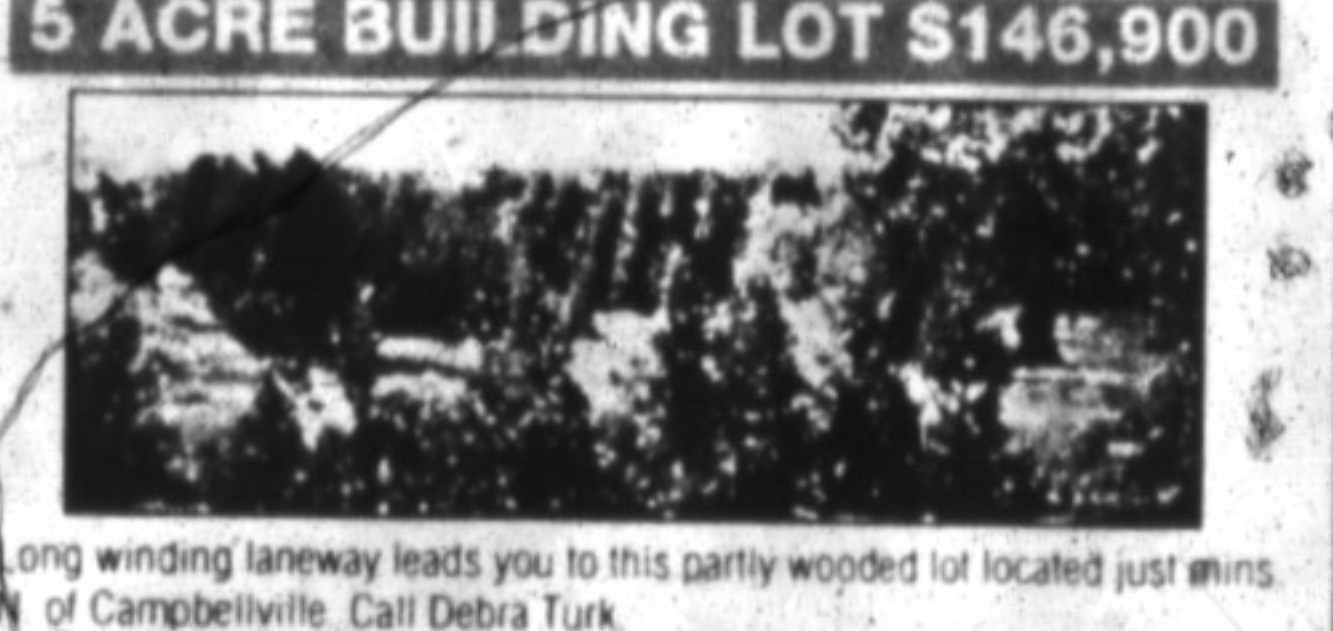
**LISTINGS NEEDED**  
\*IN-TOWN MARKET BOOMING CALL TODAY!



**DEBRA TURK\***  
Sales Representative  
878-8101



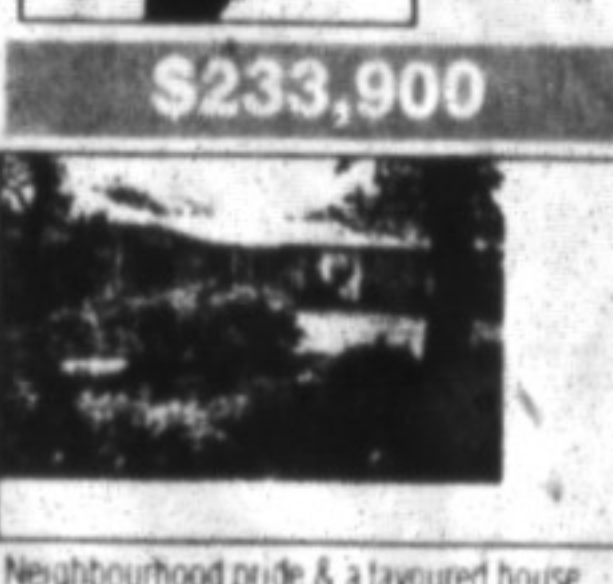
**NEW LISTING \$235,000**  
Traditional 2 storey colonial set on scenic 3/4 acre lot in village setting. formal LR & DR. Sunken FR with FP. country kit with oak Barzoni cabinets. Maiden, 4 bdrm. 3 baths, whirlpool tub & more. Call Debra Turk



**5 ACRE BUILDING LOT \$146,900**  
Long winding laneway leads you to this partly wooded lot located just mins. N. of Campbellville. Call Debra Turk.



**EVA GOODING\***  
Sales Representative  
878-8101



**\$233,900**  
Neighbourhood pride & a favoured house. A wonderful combination. recent inground pool, huge bdrms, fashionable upgrades throughout. You'll love it!



**\$179,900**  
You would think its magic so meticulously kept from top to bottom. several upgrades & renovations. Situated on a large lot.



**\$325,000**  
Sprawling bungalow, two family home, very large & accommodating. Perfect location situated on 1 acre.



**\$192,500**  
Sturdy & Attractive 5 levels, popular design, large principal rooms, 4 bdrms in a great family neighbourhood.



**BARBARA CROWE**  
MVA  
Associate Broker Market Value Appraiser  
878-8101



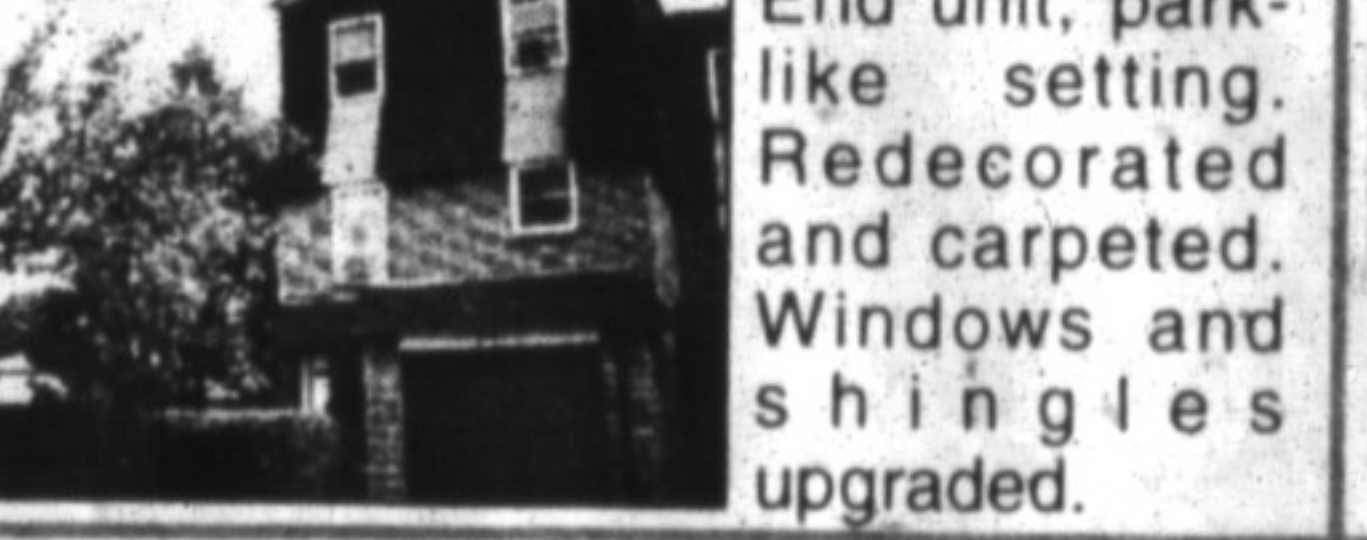
**JUST LISTED \$159,900**  
3 bdrm bungalow w/ all upgraded windows. Situated on a huge lot close to schools. Don't miss this great buy.



**ED & NORMA PROVEAU\***  
Sales Representatives  
878-8101  
"The pair who care!"



**JUST LISTED \$199,900**  
Large 4 bdrm. home with inlaw potential. Replaced windows, kitchen floor, shingles (50yr. warranty) gas fireplace, fence, patio & more. A must see.



**\$116,000**  
End unit, park-like setting. Redecorated and carpeted. Windows and shingles upgraded.



**PHIL PRESTIDGE**  
Sales Representative  
878-8101  
http://www.royallepage.ca.  
ADVERTISE YOUR HOME NATIONALLY DIAL 1-800-465-7253 AND ENTER AD CODE FOR FULL DETAILS  
FREE! HOME SELLERS GUIDE • 24 HOUR PAGER



**NEW PRICE \$224,900**  
Main floor family room, finished & basement with separate entrance. Beautiful 2.08 acre. 15 mins. to town. Going...going...



**NEW LISTING**  
Great semi with tons of upgrades, huge lot. A must see.

**INDUSTRIAL / COMMERCIAL SPACE**  
I.C.I. 2500 sq. ft. 80% A/C office. Great shape, location, 1200 SQ. FT., ind. Unit, super clean, \$550 / mth total. 9000 SQ. FT., commercial, cheap, \$400 Net / SQ. FT. 3 - 1200 SQ. FT., Main St. commercial, make an offer. 3 - 650 SQ. FT., Medical related suites Main St.



**BARB LAFLECHE\***  
Sales Representative  
878-8101  
"Delivering the service you expect & deserve"



**SMILE - YOU FOUND IT!**  
**VACANT LAND \$144,900**

**13.7 ACRES** just west of Milton on the outskirts of Kilbride. Half beautifully wooded and half open with stream running through property. A perfect private lot for your dream-home or hobby farm. Call for directions.



Sales Representative  
*The name friends & neighbours recommend.*  
**\$204,000**



**\$193,900**



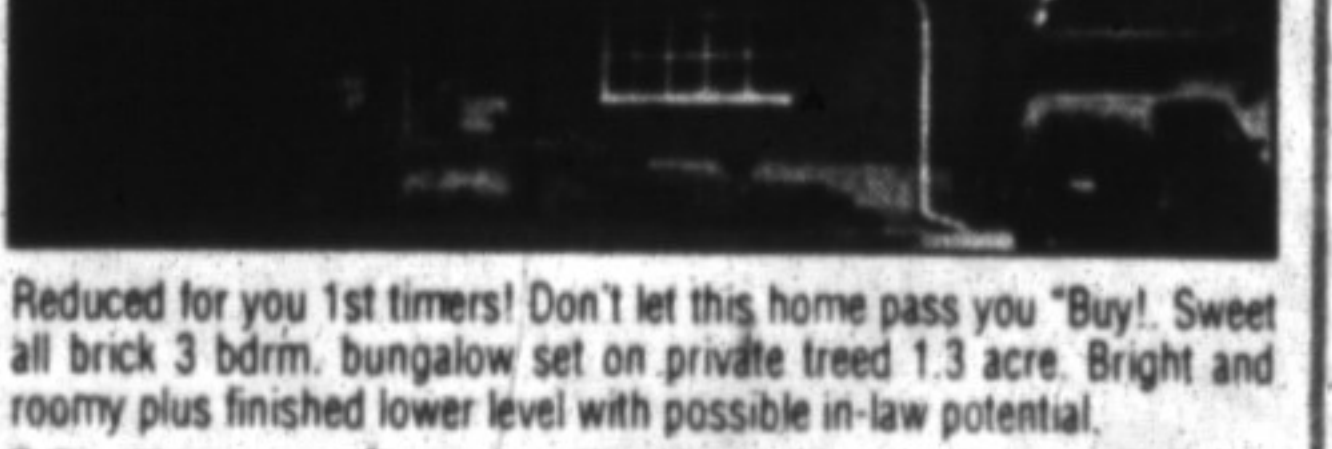
**ALL BRICK** 3 bedroom bungalow is set on a large private lot. Spotlessly clean throughout with neutral decor. Finished rec room with woodburning fireplace, extra 4 pc. bath plus 4th bdrm. or at home office space. Many recent upgrades. Ideal for empty nesters.

**\$149,900**



**VILLAGE PARC ON THE POND.** Over 1150 sq. ft. of fine living space. Featuring 5 appliances, storage room or den, 2 bedrooms and 2 baths, extra parking spot and storage locker. Enjoy the lifestyle in Milton's finest condo apt. building.

**\$209,000**



Reduced for you 1st timers! Don't let this home pass you "Buy! Sweet all brick 3 bdrm. bungalow set on private treed 1.3 acre. Bright and roomy plus finished lower level with possible in-law potential.



**PETRA SCHWABE\* BA**  
Sales Representative  
878-8101

**14 ESTATE LOTS**  
**COUNTRY LANE COURT NORTH CAMPBELLVILLE**  
Build your dream home NOW. Desirable cul-de-sac location in rural estate subdivision on the edge of the Hamlet of Moffat.  
**1.4 - 2 ACRES \$94,900 - \$129,000**  
**21 ACRES \$159,000**

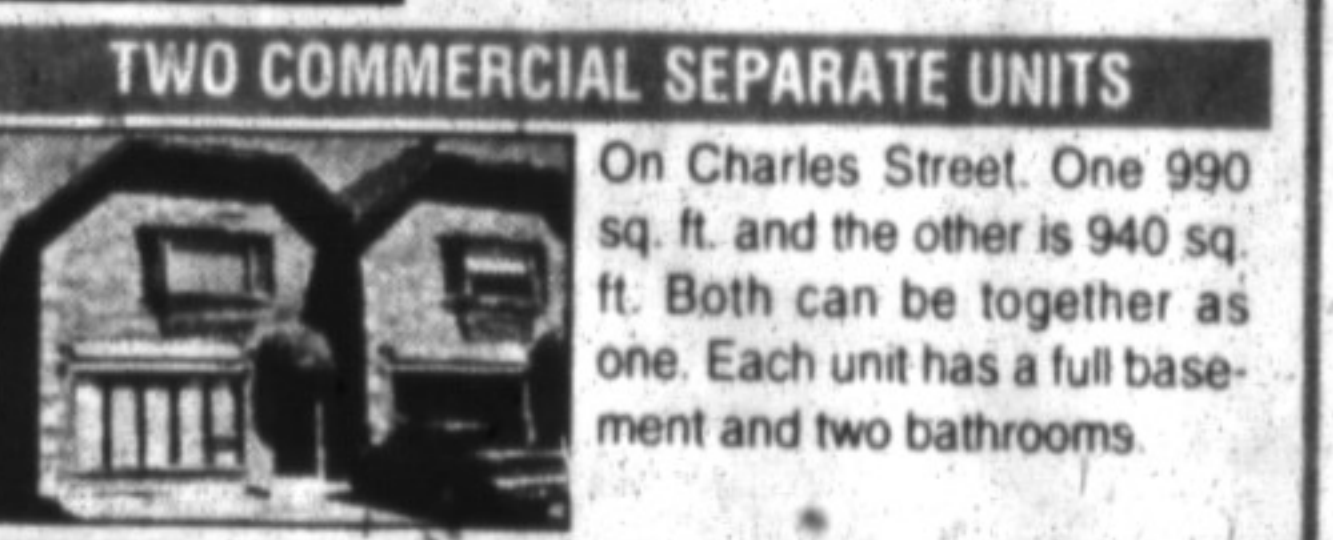
**CAMPBELLVILLE INVESTMENT OPPORTUNITY**



Century home, triplex with 3 spacious apts, sep. commercial bldg., excellent 1st mortgage & vendor financing available. Now \$239,000.



**BILL GUNCZ\***  
Sales Representative  
878-8101  
Let Me Do The Leg Work For You!



**TWO COMMERCIAL SEPARATE UNITS**  
On Charles Street. One 990 sq. ft. and the other is 940 sq. ft. Both can be together as one. Each unit has a full basement and two bathrooms.

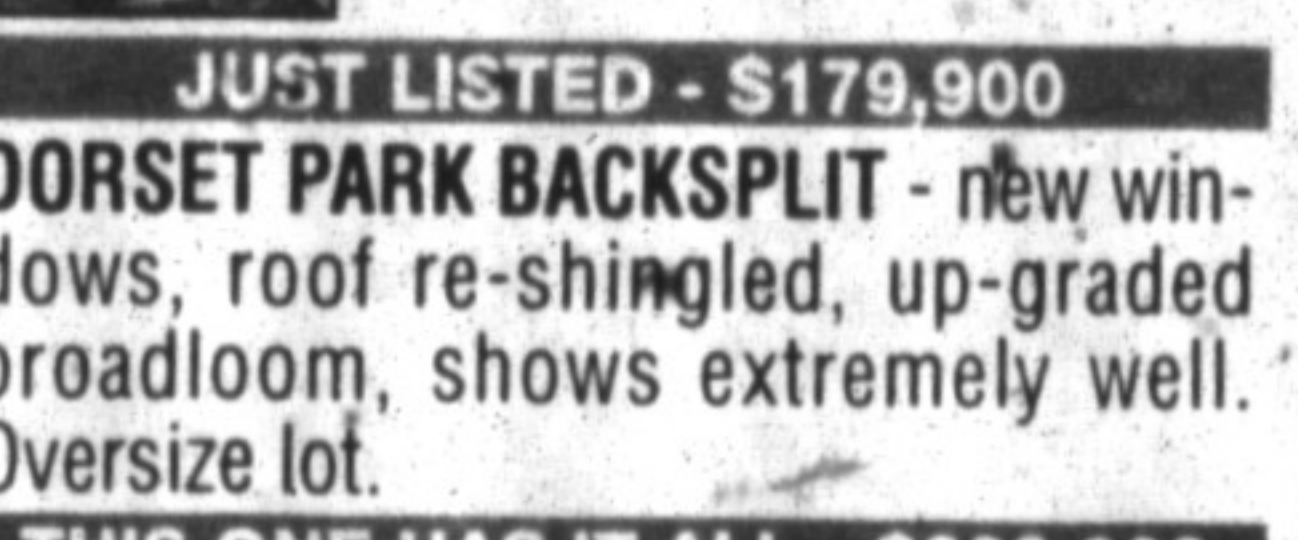
**I NEED LISTINGS - TOWN OR COUNTRY**  
My inventory is low especially homes for first time buyers in the price range of \$140,000 to \$175,000. If you are thinking of selling please don't hesitate to call for a free in home evaluation.

**I NEED ... \$150,000 - \$175,000** In Old Milton - prefer bungalow 3 bedroom, brick.

**I NEED ... Condominium in Village** - on the park. 2 bedroom preferred. From 4th floor up.



**SANDI KINSALE\***  
Sales Representative  
878-8101



**JUST LISTED - \$179,900**  
**DORSET PARK BACKSPLIT - new windows, roof re-shingled, up-graded broadloom, shows extremely well. Oversize lot.**



**THIS ONE HAS IT ALL - \$299,900**  
Ideally situated between Milton & Oakville, this century stone house features Georgian living room, huge dining room with fireplace, original pine flooring. Property is landscaped in low-maintenance perennials for beauty in all seasons.



**NEED A WORKSHOP - \$219,900**  
Then look no further! This listing is located in the Village of Campbellville, and features gorgeous ravine lot with stream at rear, large 800 sq. ft. heated workshop/garage. Home is very spacious, with finished basement and large loft area ideal for nanny or private master bedroom. \$219,900