

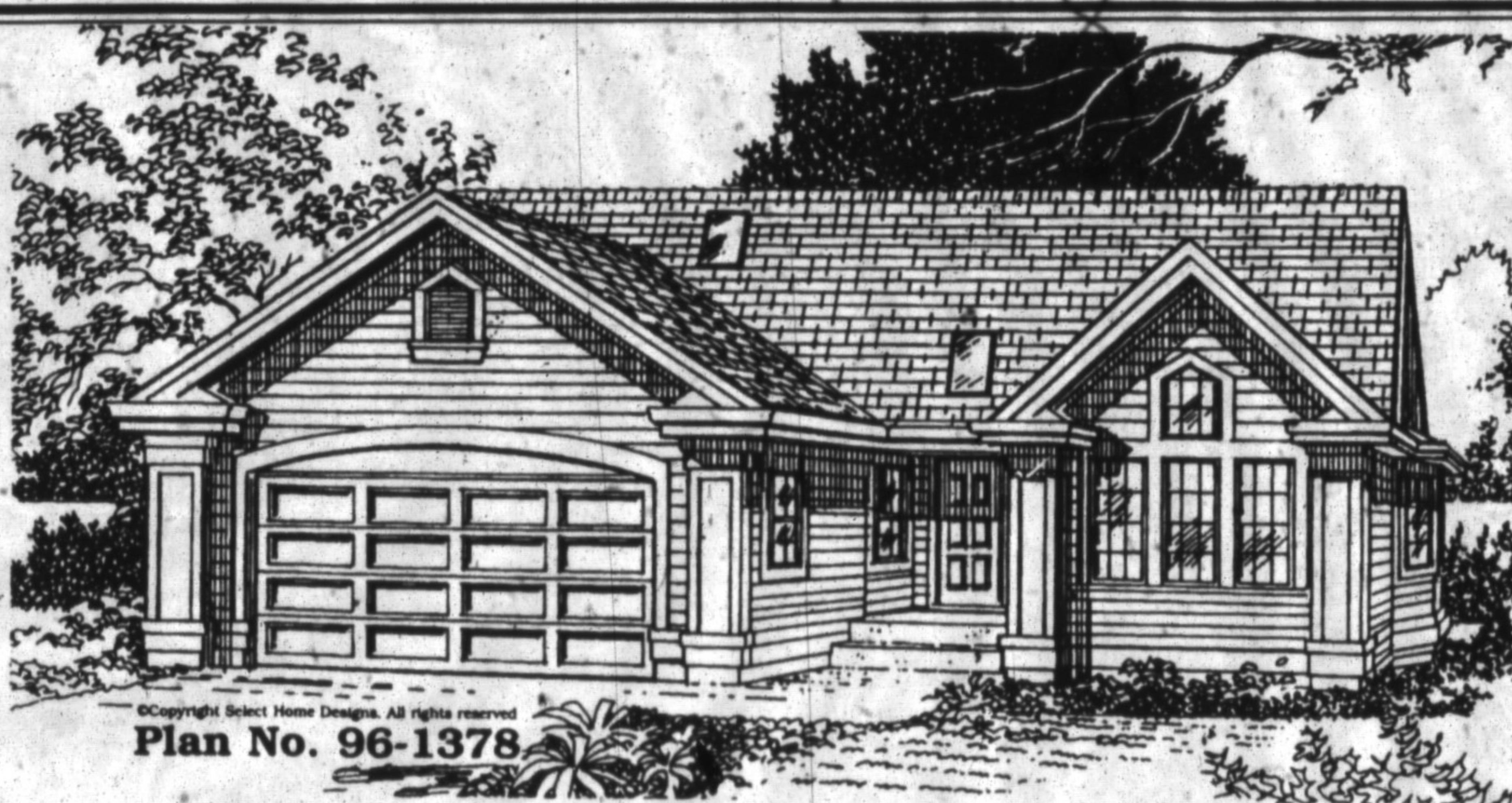
DESIGN
for **LIVING**

*Cozy retirement
or starter special*

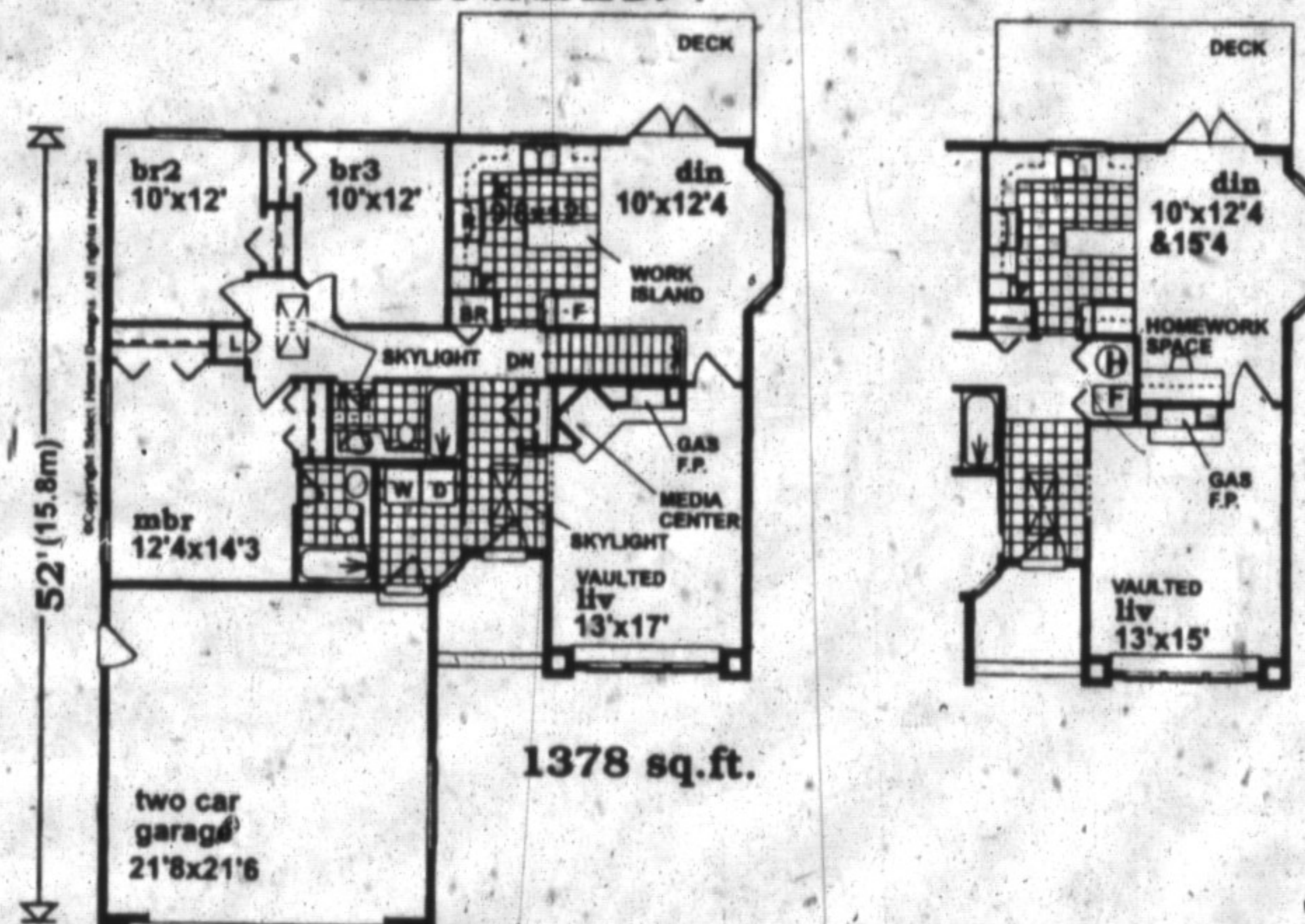
© Copyright
SELECT HOME DESIGNS

- Traditional corner column details add prestige to this three-bedroom rancher.
- Vaulted living room features a gas fireplace and built-in media centre.
- Open kitchen with work island adjoins the dining room containing a large bay window and double French doors leading to the rear deck.
- An abundance of natural light from the skylights in the main bathroom and hallways provide dramatic effects.
- Master suite with his and hers closets also features a private bath.
- Laundry room with full-size washer and dryer and handy overhead cabinets is conveniently located on main floor.
- Plan is available with full basement or crawlspace foundation option.

To receive a 300-page plan book for only \$9.95 (including shipping and GST) featuring this design and more than 400 other beautifully illustrated home and cottage designs, call toll-free 1-800-663-6739, fax (604) 251-3212, or e-mail to: selecthomedesigns@msc.com. (specify The Canadian Champion). We accept VISA / MasterCard / AMEX. For payment via cheque or money order, make payable to Design for Living, c/o The Canadian Champion, send to #301, 611 Alexander Street, Vancouver, B.C., V6A 1E1.



© Copyright Select Home Designs. All rights reserved.
Plan No. 96-1378



John Weide
ASSOCIATE BROKER



sutton group
people & properties inc.
An Independent Member Broker

Your **HALTON, MILTON,**
CONNECTION

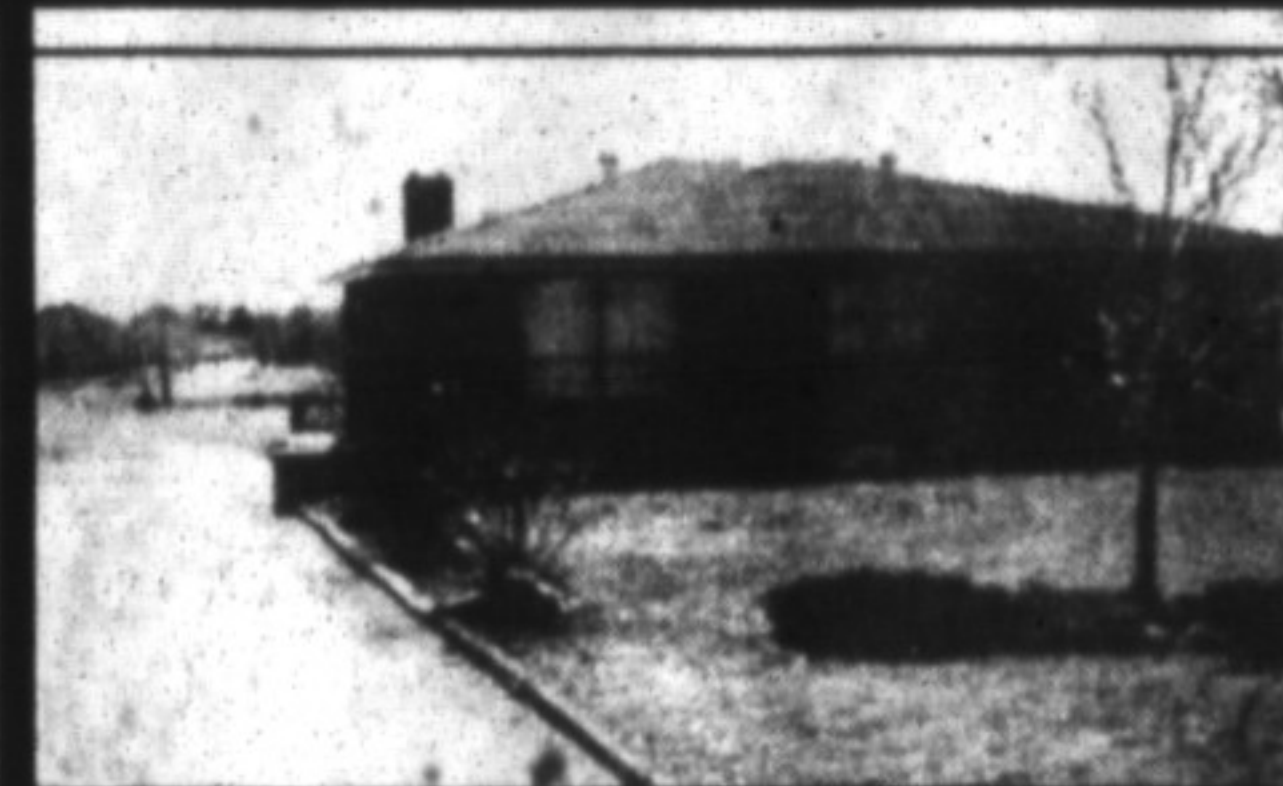
905-844-5000

Connect with the Best



Milton \$164,500

Popular neighbourhood, 3 bedrooms, separate dining room, floor-to-ceiling fireplace in living room, rec. room with wet bar, central air, large lot backs onto parkway with lots open spaces. Call **John Weide 844-5000**



Business/Investment \$299,900

Future industrial land. Just north of 401 on Third Line in Milton. 2.08 acres of valuable land together with solid built brick bungalow, well maintained, separate barn, excellent potential, many uses. Call **John Weide 844-5000**



Townhome Milton Only \$118,900

Redecorated condo. Eat-in kitchen, dining room, spacious living room, 3 bedrooms, rec. room, central air, many upgrades, wood flooring on main level, sliding door walkout to private patio. Move right in! Call **John Weide 844-5000**



Country, Third Line \$212,000

Large well-built, 3 bedroom sidesplit with sliding doors from family room, nicely treed and landscaped, enjoy the scenic views. Rural setting, exceptional value. Call **John Weide 844-5000**



Country Home \$256,900

Between Burlington, Oakville, Milton, large sidesplit, main floor den, newer updated large eat-in kitchen, 3 bedrooms, finished rec. room, 2 fireplaces, circular driveway. Large lot. Call **John Weide 844-5000**



Campbellville Country ~ 10 Acres

Quality constructed ranch, close to Bruce Trail and Crawford Lake on scenic Escarpment property. 2 fireplaces, Beckermann kitchen, main floor privacy solarium, ground level family room, den. Parquet floors, many quality upgrades. Beautifully decorated, move right in! Nothing to do. Circle this new listing. **\$339,900. Call John Weide 844-5000**



Country, near Milton \$229,900

Close to Milton and 401, located opposite beautiful horse farm. 4 bedroom home. Immaculate condition, large eat-in kitchen, finished basement. Addition suitable for in-law suite or main floor family room. Large double car garage. Lot size 134' x 204'. Check it out! **John Weide 844-5000**

