

# FALL SHOWCASE ROLL OF HOMES



**12.5 ACRES - \$374,900**

Barn + Paddocks and pastures, 4 bedroom executive. Oak floors, 2 F.P.'s. New gas furnace. Beautifully landscaped. Must see.

**VIRGINIA BRAZEAU, SALES REP 878-8101  
ROYAL LEPAGE REAL ESTATE SERVICES**

**ROYAL LEPAGE**



**49 ACRES - \$499,000**

Milton/Oakville Border. Large contemporary. Geothermal heating, greenhouse kitchen, main floor master. 2 car garage + 24' x 36' workshop.

**VIRGINIA BRAZEAU, SALES REP 878-8101  
ROYAL LEPAGE REAL ESTATE SERVICES**

**ROYAL LEPAGE**

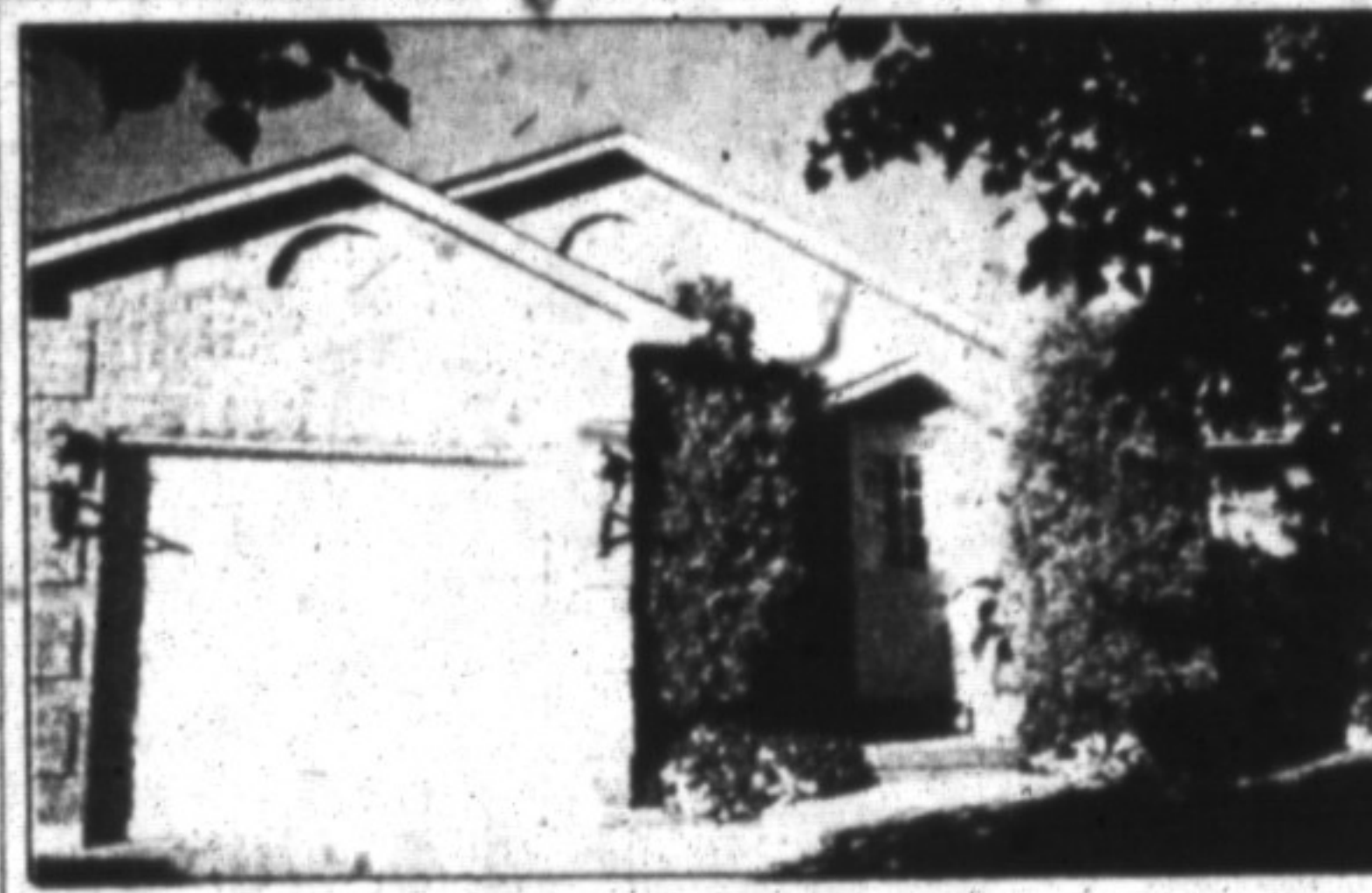


**REDUCED TO \$459,900.**

Newly Listed. Located in prestigious area of Campbellville, this home shows to perfection. Gorgeous gourmet kitchen open to sunken family room. Spiral oak staircase, master bedroom with marble ensuite, whirlpool, shower, his & her walk-in closets. Interlock driveway. Landscaping with inground sprinklers, hot tub and gazebo.

**JOYCE SCOTT, BROKER/OWNER 878-1526**

**JOYCE SCOTT  
REAL ESTATE INC. JSR**



**SPARKLING BUNGALOW!**

In Bronte Meadows, 2 + 1 bedrooms, gorgeous basement with fireplace, central air, interlocking brick driveway and walk, lots of closets and more. Listed at \$169,900. For an appointment, please call.

**TIM DOBSON SALES REP 878-4444  
NEW-ALL ('95) REALTY, BETTER HOMES AND GARDENS**

**New-All Better  
REALTY REALTOR Homes  
and Gardens**



**WELCOME TO THE COUNTRY! \$339,000.00.**

Gorgeous large cedar bungalow. Incredible eat-in greenhouse oak kitchen with great view, cathedral ceilings, 2 large decks on 6 acres surrounded by forest. Excellent drinking water. Close to 401. Super clean and tidy. A real joy to view. (<http://www.mls.ca>) For more details or to view, please call

**MARK MALLALIEU, BROKER  
876-0633**

**REALTY WORLD  
MILLPOND REALTY INC., REALTOR**



**OPEN HOUSE SUN. 2-4 PM  
170 WHEELIHAN WAY**

**"COUNTRY MEADOWS" CAMPBELLVILLE —  
EXCITING NEW LISTING. \$398,000.**

Take Guelph Line 2 kms S. of Hwy #401 and follow signs. Beautiful one acre private hill-top setting with countryside view. Custom 4 bedroom, 4 bath, all brick in immaculate condition. Meticulous landscaping with inground sprinkler and tiered deck with hot tub. Two fireplaces, 2nd fl. office complete with built-in desks. "Beckerman" custom cabinets throughout. Call

**The Prudential SHEILA MACKENZIE  
ASSOC. BROKER  
STEPHENS REALTY INC 639-6111**



**OPEN HOUSE SUN. 2-4 PM!  
507 HAYWARD CRES.**

**JUST LISTED IN MILTON, \$182,900.**

Stunning 4 bedroom detached link on quiet street backing onto school grounds! Very private, secluded and landscaped property with many mature trees. Extremely well-maintained and updated home with new windows, new broadloom, etc. Huge living room with fireplace and walkout to deck/main floor den! Close to "GO" Station! Must be seen!

**CHRISTOPHER ALLEN, SALES ASSOC. &  
ANNA PASCALE-ALLEN ASSOC. BROKER**

**RE/MAX (905) 855-2200  
RE/MAX REALTY  
ENTERPRISES INC.**



**93 ACRE PROFESSIONAL HORSE FARM**

Near Mohawk Raceway. Completely renovated home, 25 stall barn with office arena, 10 paddocks. A-1 boarding facility. Asking price \$475,000.

**ARNOLD SASEK, SALES REPRESENTATIVE  
878-1568 OR (905) 568-2121**

**Century 21 CENTURY 21 KINGSBURY  
REAL ESTATE LTD.**



**KILBRIDE — A MUST SEE ON 2-1/4 ACRES**

\$399,000. Super 2800 sq. ft. home, large pool, stream, backing onto conservation lands, not in an estate subdivision. One of a kind in the village of Kilbride.

**ARNOLD SASEK, SALES REPRESENTATIVE  
878-1568 OR (905) 568-2121**

**Century 21 CENTURY 21 KINGSBURY  
REAL ESTATE LTD.**