

-Advertisement-

Travel
with
Bruce Hood

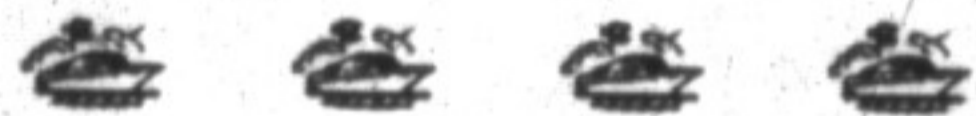
HAVE YOU HEARD OF LAKE CHAPALA?

(Near Guadalajara)

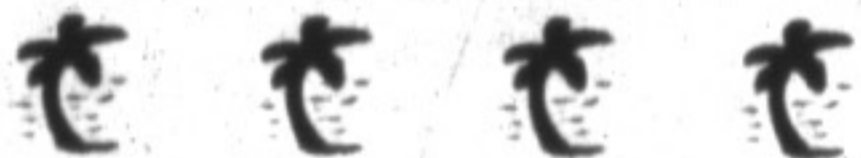
MEXICO - MANY GREAT OFFERINGS! From the shores of the Pacific Ocean to the Sea of Cortez, the amazing country of Mexico has much to offer, and with the value of our Canadian \$\$ to the peso, at good bargains!



GUADALAJARA, COPPER CANYON, ELIVERTO, CHIHUAHUA are exciting places to sight see, along with the great vacation beach resorts that line the coasts. Over the next couple of weeks WE'LL BRING YOU THOUGHTS, NEWS AND VIEWS FROM THIS COUNTRY that has such a variety to offer you - for visiting, or how about for a retirement home!



THE AREA AROUND LAKE CHAPALA, Mexico's largest NATURAL LAKE, has one of the finest climates in the world. People from countless countries have retired to enjoy the warm days and cool nights along the shores of the 55 mile long body of water. Their enjoyment is only heightened by the CRIMSON SUNRISES and GOLDEN SUNSETS that crown the start and finish of each majestic day.



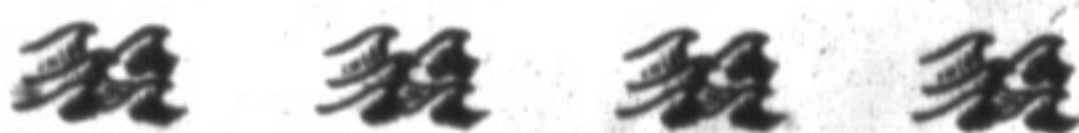
LAKE CHAPALA creates a EUPHORIA where worries give way to DELIGHT. Only rarely is the spell broken and a person returns to the vicissitudes of living.



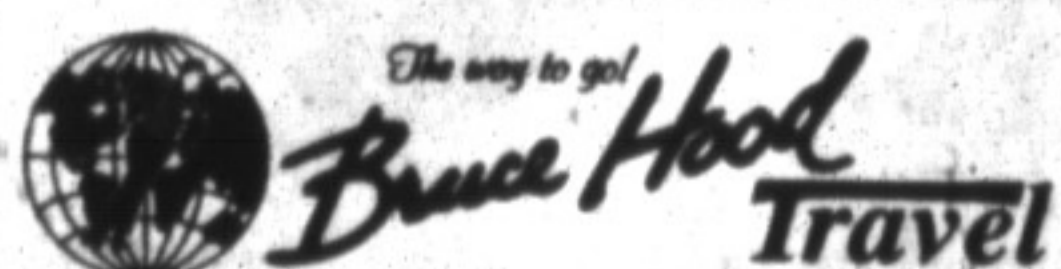
AFTER THE DRY MONTH OF MAY, the rainy season is welcomed. It lasts from mid-June to October and brings rain most afternoons. Sometimes, the skies over the lake will blacken and rolling thunder will trumpet a torrential downpour. It is a MEMORABLE SIGHT. The following MORNING IS USUALLY WARM AND SUNNY.



Even during the RAINY SEASON, the WEATHER IS WARM. But because the lake is 5,200 feet above sea level, you may need a sweater for cooler evenings.



According to HISTORIANS, the first American came to the area in 1885, but it wasn't until 1955 that the larger influx of FOREIGNERS began. Now it is estimated that more than 6,000 foreigners, mostly AMERICANS and CANADIANS LIVE ON THE NORTH SHORE.



Your Professional, Full Service,
Community Involved
Travel Agency

16 Martin St., Milton - 878-2886
Bringing The World To You Since 1961

Dateline

Dateline is a free listing of coming events only. The column is available to local community groups to assist in promoting their future events. Only charitable or non-profit community groups may use this service. We can only guarantee one issue of publicity closest to the date of the occurrence although more insertions are possible if demand is low.

Notices for Dateline should be written and handed in at the office of The Champion, 191 Main St. E., mailed to us at P.O. Box 248, Milton, Ont., L9T 4N9, or faxed to (905) 878-4943. The final deadline is noon Friday for Wednesday's edition and noon Wednesday for Friday's edition. Dateline items will not be accepted by telephone.

Friday Oct. 18

It's Hot Meal Deal Day at the Milton Seniors' Activity Centre, 500 Childs Dr. The 11:30 a.m. event features food and fellowship.

Milton Concert Productions presents "All Mozart," the first in a

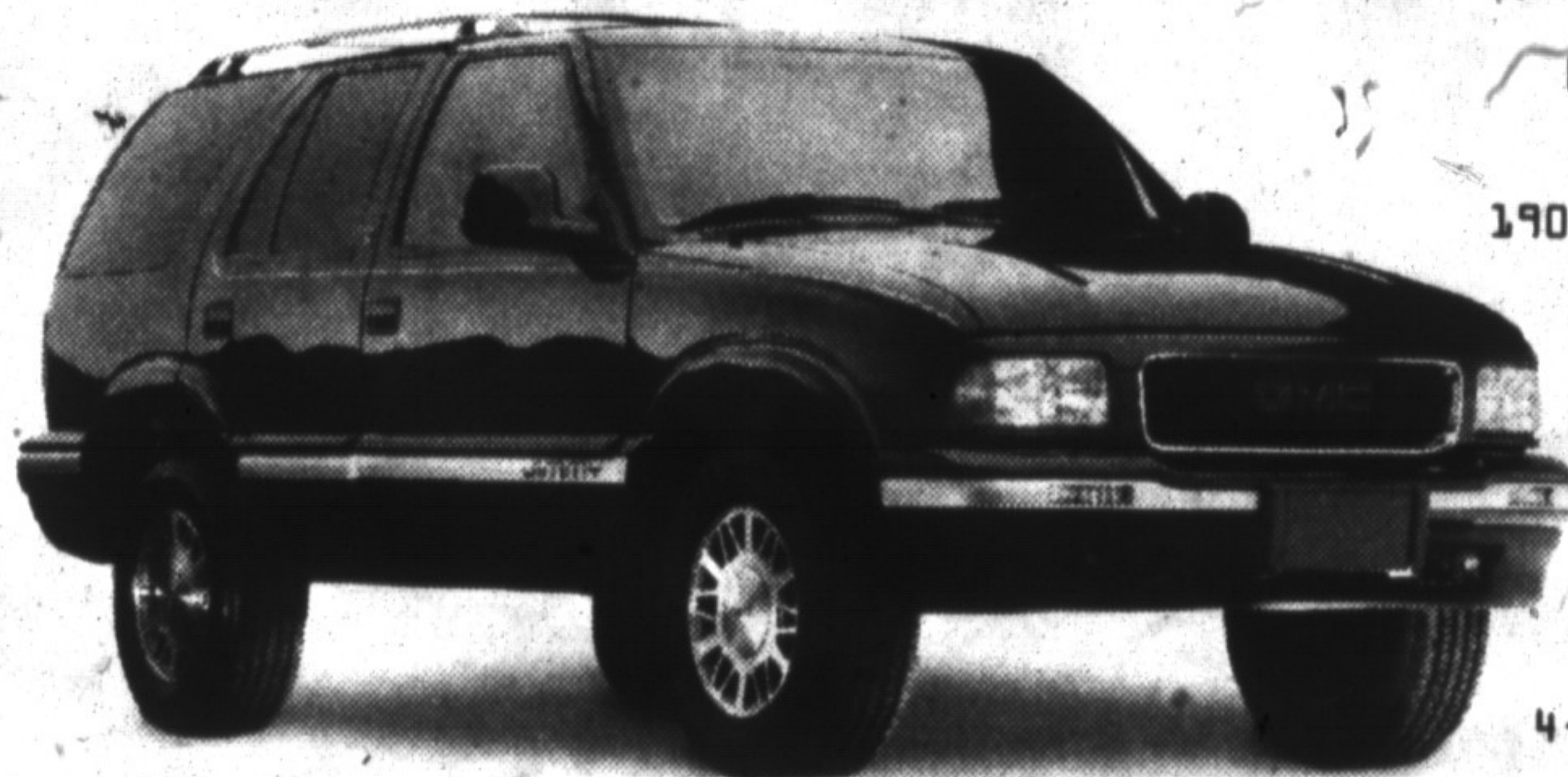
series of four concerts featuring the North York Symphony Orchestra conducted by Maestro Kerry Stratton. The concert takes place at 8 p.m. at Milton Concert Productions' new location of the Milton Alliance Church on Derry Road. Tickets cost

• see DATELINE on page 16

THESE TRUCKS ARE MEANT TO LAST, BUT THESE PRICES AREN'T.

1996 GMC YEAR-END CLEAROUT

'96 GMC JIMMY



\$399*

per month/36 months with only \$2,140 down

- 190 HP Vortec 4.3 litre V6 engine
- power windows/locks/mirrors
- AM/FM cassette
- 4-wheel ABS
- air conditioning
- aluminum wheels
- 4-speed automatic transmission

'96 GMC SIERRA REGULAR CAB



\$17,595†

(excludes freight \$870)
\$249* per month/36 months with only \$1,520 down

- 200 HP Vortec 4300 SFI V6 engine
- galvanized steel 8 ft. cargo box
- automatic transmission
- chrome plated wheels
- 3-year/60,000 km GM TOTAL™ Warranty

These are the lowest prices of the year, so don't wait too long or they'll be long gone.

Get what you want from your GMC Truck Dealers



SMARTLEASE: Smart customers use SMARTLEASE, a custom-designed lease plan to fit your specific needs. You can pay zero down, lower your monthly payments or use your trade-in.

You Should Know This: *Based on a 36 month lease for vehicles equipped as described. Annual kilometre limit: 20,000 km. †\$0.08 per excess kilometre. †Offer applies to 1996 new or demonstrator models in dealer inventory. Dealer trade may be necessary. Freight (Jimmy - \$670, GMC Sierra - \$870), licence, insurance, Security deposit and taxes are not included. Dealer may sell/lease for less. Offer applies to qualified retail customers only. OAC. Limited time offer may not be combined or used with other offers. See your Dealer for details. **T3 and GM are licensed users of Marks. Subject to GM Card guidelines.