

# Dateline

• continued from page 9

p.m. The guest speaker is Colin Chapman, eminent British genealogist from England. He discusses the Federation of Family History Societies of England. Visitors are welcome.

The Halton Cross Country Ski Club holds a bicycle tour to Niagara on the Lake. For more information, call 634-2012.

The Terry Fox Run takes place at E.C. Drury High School from 10 a.m. to 3 p.m. Participants can walk, run, ride or rollerblade all or part of the 10-km course. The event also includes a silent auction, barbecue for participants, face painting and prizes. Pledge forms are available at drugstores and banks. For more information, call 878-1206.

Mississauga's Eckankar community invites Miltonians to attend the Eckankar Worship Service at Hugh Foster Hall, 53 Brown St., from 1:30 to 3 p.m. The service is made up of fellowship

speakers, music, light refreshments and sharing of Hu, a sacred name for God. For information, contact Ashmine Solanki at 878-3037.

**Monday Sept. 23**

Registration for **Crafts Unlimited** takes place at Milton District High School, Room 201, from 7 to 9 p.m. The craft-making group meets every other Monday starting October 7. The cost is \$15. For more information, call 876-1394 or 878-1008.

**Tuesday Sept. 24**

The Arthritis Society holds an **arthritis education group** from 12:30 to 2:30 p.m. at the Milton Leisure Centre. The session includes general information about arthritis, wear and tear of joints, individual assessment and pain management. Participants must suffer from arthritis and have a doctor's referral. Call Audrea Lear-Costigan at 878-9151.

Six-week program **Building Healthy Relationships for Teenagers** begins in Oakville. The Canadian Mental Health Association program is designed to help teenagers recognize the difference between healthy and unhealthy relationships and how to foster positive ones. Discussions include recognizing abusive relationships, dating issues, self-esteem, conflict resolution and communication skills. The course is offered Tuesdays from 4:30 to 6 p.m. until October 29 at 341 Kerr St. The cost is \$65. For more information or to register, contact Susan Phair at 845-5044.

A 30-hour training program for the **Double Jeopardy Peer Support Program** begins. Women are needed to act as peer supporters to other women living in the Milton area. Peer supporters are women trained to provide support in a one-on-one relationship to women living in stressful situations. For more information or a peer supporter application form, call Susan Coyne at 847-6174.

11—The Canadian Champion, Wednesday, September 18, 1996

## MILTON'S USED CAR

# Wheels & Deals



**1995 GRAND CARAVAN SE**

Air, tilt, cruise, power windows & locks, overhead console, keyless entry, Like new, a must see!



*Our Reputation Rides with You*



**1994 GEO METRO**

The gas miser! Auto, AM/FM, 2 door. Great run about.



*Our Reputation Rides with You*

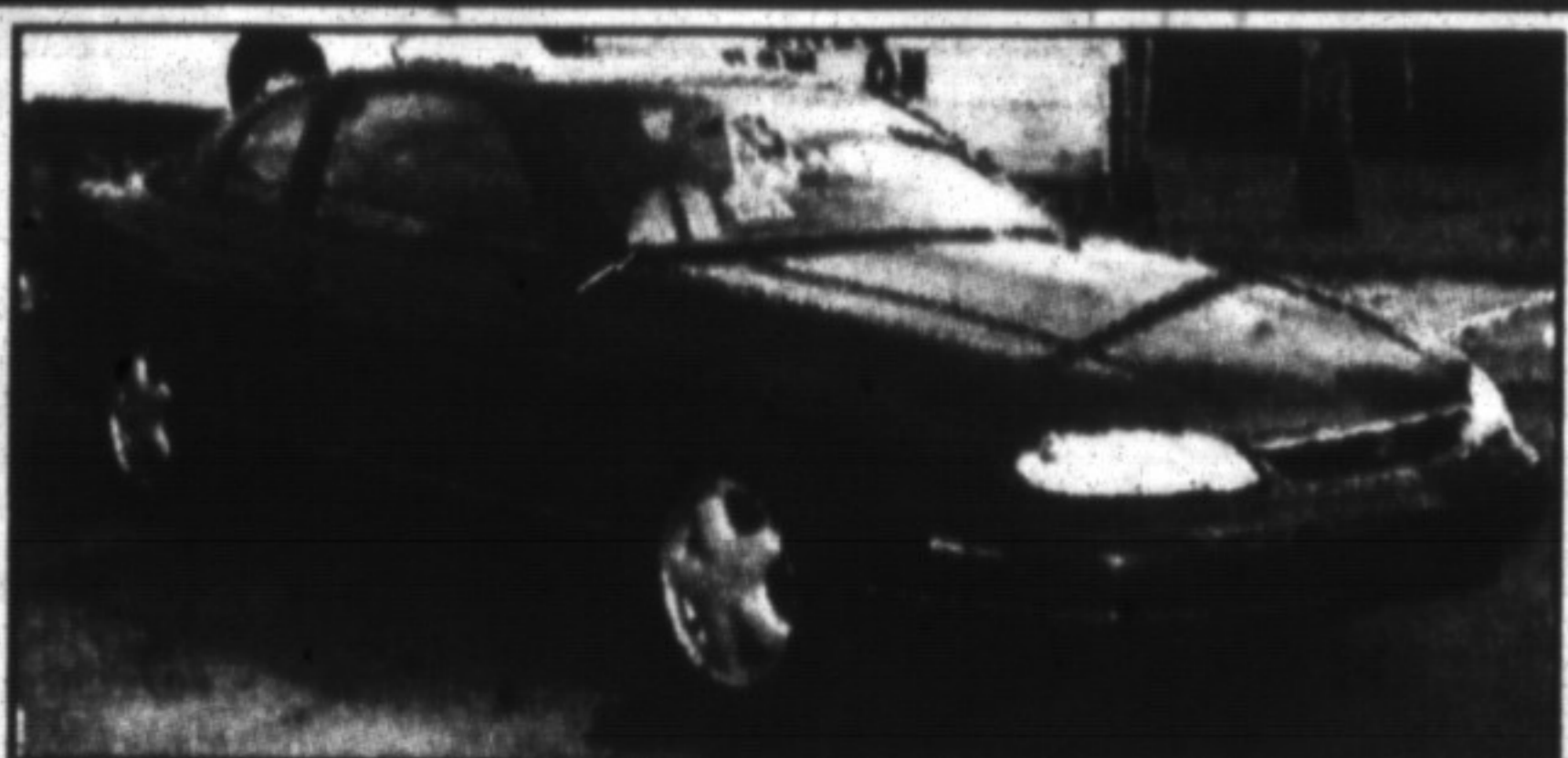


**1996 GRAND CARAVAN LE**

One owner. Loaded, loaded. Priced to sell.



*Our Reputation Rides with You*



**1996 MONTE CARLO LS**

V6 engine, auto O/D, air conditioning, P/windows, P/door locks, cruise, tilt, AM/FM cassette, bucket seats & console. Balance of new car warranty. Stock #P1523.



*Sale Price \$21,995\**



**1996 CUTLASS SUPREME SL 4 DR.**

V6 engine, auto O/D, P/windows, P/door locks, cruise, tilt, AM/FM cassette, air condition, AM/FM cassette, 60/40 seats. Balance of new car warranty. Stock #1525.



*Sale Price \$21,995\**



**1996 LUMINA 4 DOOR**

V6 engine, auto O/D, P/windows, P/door locks, tilt, cruise, air cond., AM/Fm cassette, 60/40 seats, white with blue interior. Balance of factory warranty. Stock #P1524.



*Sale Price \$21,995\**



**1991 PLYMOUTH GRAND VOYAGER LE**

Winters coming, get the added traction with this fully equipped, all wheel drive; mover. Top of the line and only ....



*Only \$11,995\**



**1994 CHRYSLER LEBARON CONV. GTC**

Still lots of time to drive, with the top down, and still laugh at the winter snows with the top up. Don't miss this one.



*Priced to clear \$15,495\**



**1992 PLYMOUTH VOYAGER**

Several to choose from. This one in immaculate condition, just waiting for the opportunity of serving its new owner, as it did the original owner.



*Yours for only \$11,995\**

