

**WIN
A BRAND
NEW
FORD
ASPIRE**



**NO DICKER
STICKER!
SALE!**

See You Later Alligator.
Good Buys ON

VISIT OUR
INTERNET SITE
AT:
www.cybercar.com



'96's

**BRAND NEW AND
Ready TO Go!**

**WIN A
BRAND
NEW
FORD**

Aspire



HERE'S HOW

1. Purchase or lease any new or used in stock vehicle from time of print until close of business September 30, 1996 (vehicle must be delivered by October 5th/96) and you will receive a voucher to obtain a key which may start a brand new 1996 Ford Aspire.
2. The successful party will win a 2 year (24 month) 36,000 km Red Carpet Lease on the displayed vehicle or equivalent.
3. This contest is subject to all relevant laws.
4. Chance of winning is approximately 1 in 100. See dealer for complete details.

#673A-95 TAURUS GL - 4 door, auto,
air - \$15,995 or *\$299. PLAN

#712A-95 CONTOUR GL - 4 door, auto,
air - \$14,995 or *\$249. PLAN

#654A-94 ESCORT WAGON - auto,
air - \$10,995 or *\$249. PLAN

#699A-94 TEMPO GL - 2 door (S)
- \$6,995 or *\$199. PLAN

#655B-91 ESCORT GL - 4 door, air
(SOLD) - \$7,495

#683A-95 WINDSTAR GL - auto, air -
\$18,995 or *\$315. PLAN

#697A-95 WINDSTAR GL - auto, air
- \$18,995 or *\$299. PLAN

#618A-95 AEROSPORT - auto,
air - \$16,995 or *\$299. PLAN

#669A-94 F150 ENFORCER - auto
- \$14,995 or *\$369. PLAN

#680B-94 EXPLORER LTD -
loaded - \$23,995

#668A-94 AEROSTAR EXTENDED - all
wheel drive - \$16,995 or *\$229. PLAN

#642A-94 VILLAGER GS - 7 pass
- \$17,695 or *\$354. PLAN

#663A-94 EXPLORER XLT - loaded
- \$22,995 or *\$494. PLAN

1996 WINDSTAR GL 357A PKG.

\$369**
After Rebate

Start up cost as follows:
Down Payment \$2,000.00
Tax 300.00
First Payment 424.97
Ref. Sec. Deposit 425.00

\$3147.97 + Lic.



MOST POPULAR WINDSTAR PKG. EVER!

*18,000 km Red Carpet lease plus taxes.
**15 AVAILABLE FOR
IMMEDIATE DELIVERY**

AM/FM cassette, light group, luggage rack, power convenience group, privacy glass, power windows/locks, tilt, cruise. Plus: Remote entry, floor mats, tip slide seat, quad buckets, aluminum wheels.

1996 MERCURY VILLAGER GS

\$41188*
After Rebate

Start up cost as follows:

Down Payment \$2,000.00
Tax 300.00
First Payment 473.66
Ref. Sec. Deposit 475.00

\$3248.66

*18,000 km Red Carpet lease plus taxes. + Lic.



975A PACKAGE

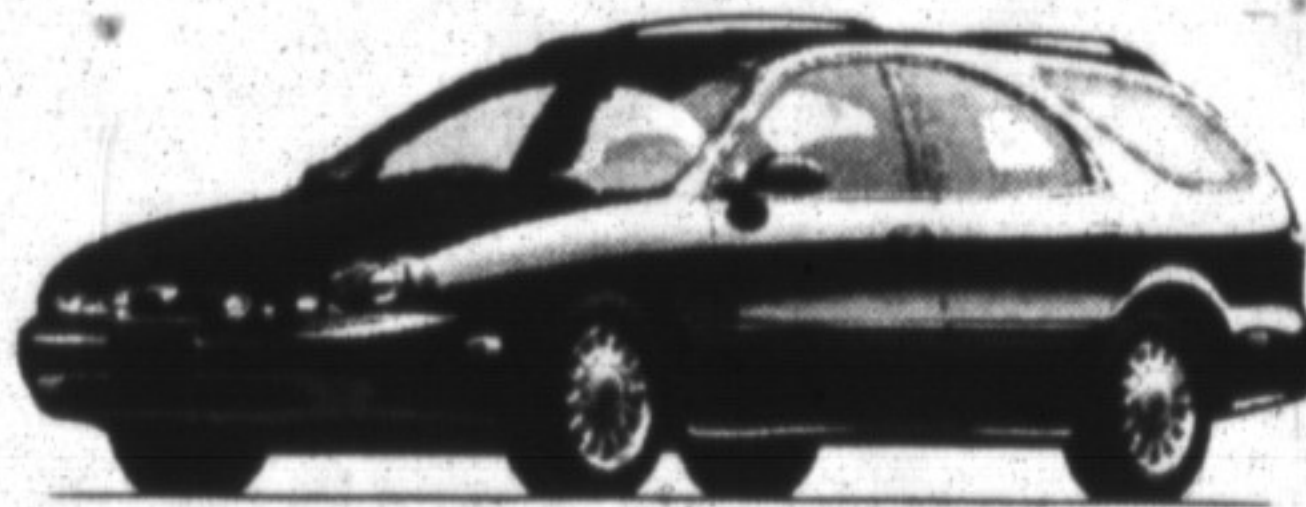
Cruise control/tilt wheel, power windows/locks, privacy glass, luggage rack, power driver seat, keyless entry aluminum wheels, aux air cond./heater, deluxe two-tone paint.

1996 MERCURY SABLE WAGON

**ONLY AT THIS
INCREDIBLE PRICE**

Designed to sell for \$26,578
Less P.E.P. Pkg. discount 885.00
\$25,693
Less Factory Rebate 750
Less Gallinger Discount 2,243
TOTAL SAVINGS \$3,878

YOUR PRICE \$22,700*
Incl. Freight. Plus all taxes & lic.



412A PACKAGE

Tilt/cruise control, AM/FM cassette, anti-lock brakes, aluminum wheels, power driver's seat, 3.0L 6 cylinder engine, rear wiper washer/cargo cover.

** Monthly lease payment based on 24 month lease from FORD CREDIT on qualified retail leases. © A.C. Some conditions, mileage restrictions apply, \$2,000 downpayment or trade in equivalent plus first month and security deposit, plus taxes and lic. fee.

Serving Halton since 1967

ASK US ABOUT



GALLINGER

FORD
LINCOLN
MERCURY

MOTORS LIMITED

• 655 MAIN ST. E., MILTON • 875-FORD