

Improving your odds against Canada's #1 killer



HEART AND STROKE FOUNDATION OF ONTARIO

Still searching for sites to shoot movie

Continued from YOUNG on page 13
the Montreal massacre.

"I wanted to start at the top by directing and producing my own film," laughed Ms Hahn.

The finished project will take two forms, one a 15 minute short and the second, slightly longer, with more dialogue.

intended for broadcast. Ms Hahn said she hopes the piece will be picked up by the Toronto International Film Festival the following September and by the Toronto Short Film Festival in May.

Ms Hahn said the movie industry has moved inexorably toward Milton. Location manager Grace Saunders is from Milton

and worked while a student to complete a vintage home directory for Milton LACAC (Local Architectural Conservation Advisory Committee). Studying urban planning, Ms Saunders was acquainted with Norman Hibbert, Ms Hahn's husband.

In addition to agricultural resources, per-

sonal contacts, quality locations and the fact that union rules drive up the cost of productions outside the Greater Toronto Area, Ms Hahn says people in Milton have been very helpful and friendly.

The project is an adaption of a story by Jack Cady which Ms Hahn happened upon in a collection of short stories, Told from the perspective of a nine year old boy, it deals with the appearance of a tinker, or travelling handyman, and relationships between the men and women on the farm he visits.

"The film deals with the tensions and antagonisms between men and women, with the catalyst being the arrival of the tinker," said Ms Hahn. "He restores magic to the women's lives and they change. The film deals with violence of a more psychological nature."

Ms Hahn said she was looking for a stone farmhouse but decided after doing some reading that such a structure was likely a sign of a more affluent farm than the story suggests. She began to concentrate on wood frame buildings.

She added she is having difficulty locating some props and interior locations. She needs a period kitchen and a parlour with a piano for some scenes, and is looking for a tinker's wagon, a 1920's truck and a hay wagon and buggy.

"We heard a rumour that there is an authentic tinker's wagon in Milton somewhere but we haven't been able to locate it."

"When we first approached the town they asked us if we were going to blow anything up," said Ms Hahn.

Town officials have had a heightened awareness of film companies using locations around Milton after a spring shoot stirred a lot of residents with an unanticipated explosion.

Anyone who has period pieces or locations can call Ms Hahn at 416-536-8446. She added actors and crew will likely seek billets in Milton because shooting will take from dawn until dusk each of the six days.

She is also seeking sponsors and interested tradesmen are more than welcome on the set, she said.

Buyer's levy

from DEVELOPERS page 5

sent to school boards so, in reality, education suffers."

Mr. DeSantis suggested the board should, instead, devise new ways to cut building costs, such as staying away from sprawling one-level structures that require more land.

Ms Leblovic, who chaired the committee that worked with the Development Charges Coalition to hammer out a fair rate, has heard comments like that before but insists EDCs are needed.

"There is no more money. That is the reality. The money we have must be used in a way that will benefit the students most. We used to nibble away at the edges of problems, but those days are long over. It takes dramatic change to effect change" she said.

"Municipalities have always had development charges to fund municipal works. They have been in place a long time. School boards are now able to follow suit."

"I recognize there may still be some concern in the developer community, but I'm very grateful to the spirit of goodwill and co-operation of the more than 20 Halton area developers who worked with us to come up with a fair and reasonable charge. This is the kind of effort in working together that demonstrates that creative solutions can be found."

CANADA-WIDE CLEARANCE

Chevrolet • Geo • Oldsmobile

IT'S THE LIMITED TIME CHEVROLET DEALERS' '96 CLEAROUT.
HURRY IN FOR THE BEST SELECTION ON THESE AND ALL OTHER MODELS IN STOCK.

CAVALIER COUPE



- 2.2 litre engine • 5-speed transmission
- rear spoiler • 4-wheel ABS • dual air bags
- easy entry front seat • trunk release

\$179

SMARTLEASE per month/36 months plus a down payment of \$2,283 or equivalent trade, security deposit of \$300 and freight \$595 are required. 1SA vehicle shown.

\$13,730

Get over 500 litres* of premium-blend Sunoco Ultra 94 gas FREE with a Cavalier or Lumina Van.

Available at South Central Ontario Chevrolet Geo Oldsmobile Stores only

LUMINA VAN



- driver's side air bag • 4-wheel ABS • 3.4 litre engine • 4 speed automatic transmission
- tinted glass • seven passenger seating
- AM/FM stereo • rear window defogger

\$268

SMARTLEASE per month/36 months plus a down payment of \$3,016 or equivalent trade, security deposit of \$325 and freight \$745 are required. 1SA vehicle shown.

\$20,798

CUTLASS SUPREME

- dual air bags • 4-wheel ABS • 3.1 litre engine • 4 speed automatic transmission • remote keyless entry • power windows • power locks • cruise control • air conditioning

\$298

SMARTLEASE per month/36 months plus a down payment of \$3,000 or equivalent trade, security deposit of \$350 and freight \$760 are required. 15B vehicle shown.

\$20,999



ROCKPORT BLAZER

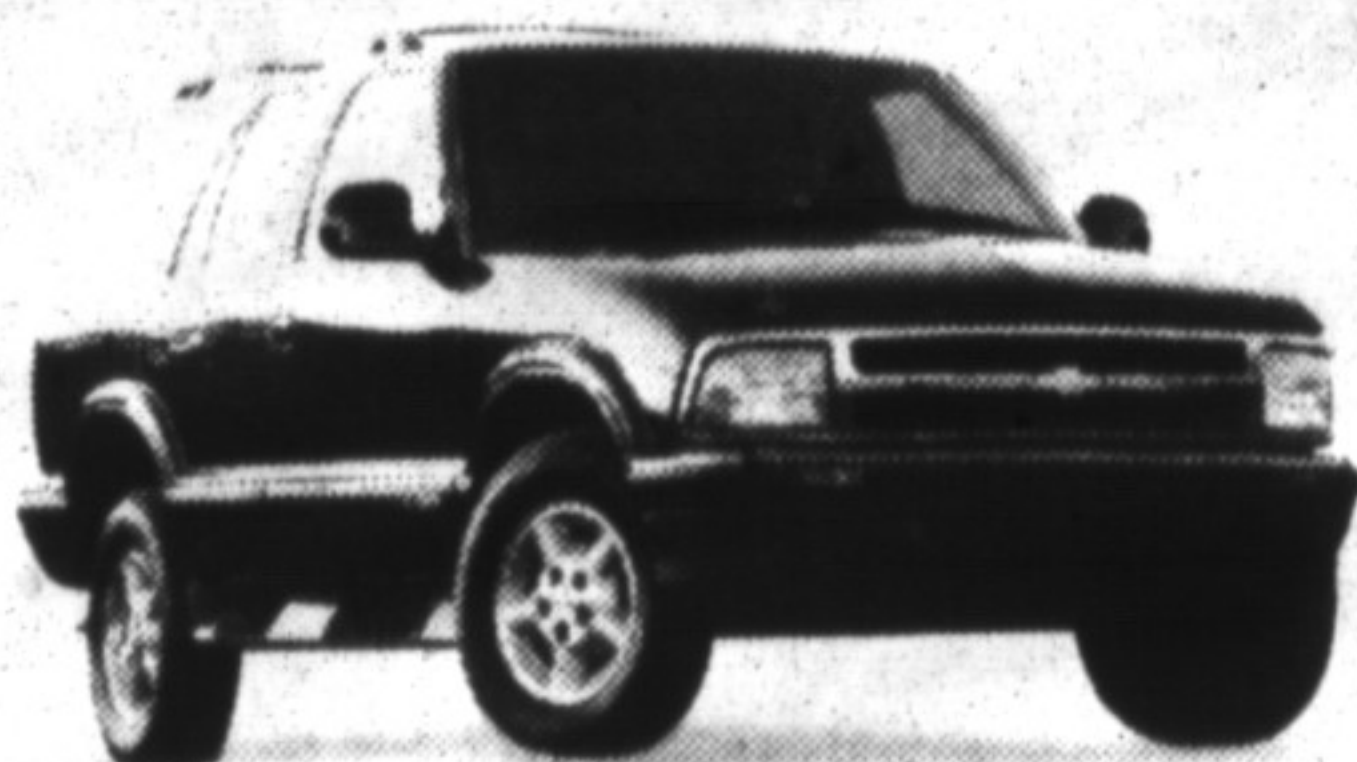
- driver's side air bag • 4-wheel ABS • 4.3 litre V6 engine • 4 speed automatic transmission • push button 4-wheel drive • power windows/mirrors/door locks
- air conditioning • high back reclining front bucket seats

No-charge running boards, aerodeflector, embroidered front floor mats

OUR LOWEST LEASE OFFER OF THE YEAR

\$399

SMARTLEASE per month/36 months, plus a down payment of \$2,510, security deposit of \$475 and freight \$670 are required. 15C vehicle shown.



VALUE PRICED FOR A LIMITED TIME AT YOUR CHEVROLET • GEO • OLDSMOBILE STORE



Don't forget to use your GM card earnings toward the purchase or lease down payment of your next new GM vehicle.*



\$750

SMARTLEASE: Smart customers use SMARTLEASE, a custom-designed lease plan to fit your specific needs. You can pay zero down, lower your monthly payments or use your trade-in.

What's your card done for you lately?

You should know this: *Based on a 36-month lease for vehicles equipped as described. Freight, licence, insurance and taxes are not included. Offer applies to 1996 new or demonstrator models. Dealer trade may be necessary. Dealer may sell/lease for less. Offer applies to qualified retail customers only. Limited time offer may not be combined or used with other offers. See your Dealer for details. **TD and GM are licensed users of Marks. **The buyer/lessee will receive \$300 worth of Sunoco Ultra 94 vouchers which is approximately 500 litres total, provided Ultra 94 is lower than 60¢ per litre. Gasoline vouchers can be redeemed for any Sunoco fuel. Offer applies to new Cavalier 1996 models and Lumina APV 1996 models. This offer expires September 14, 1996.