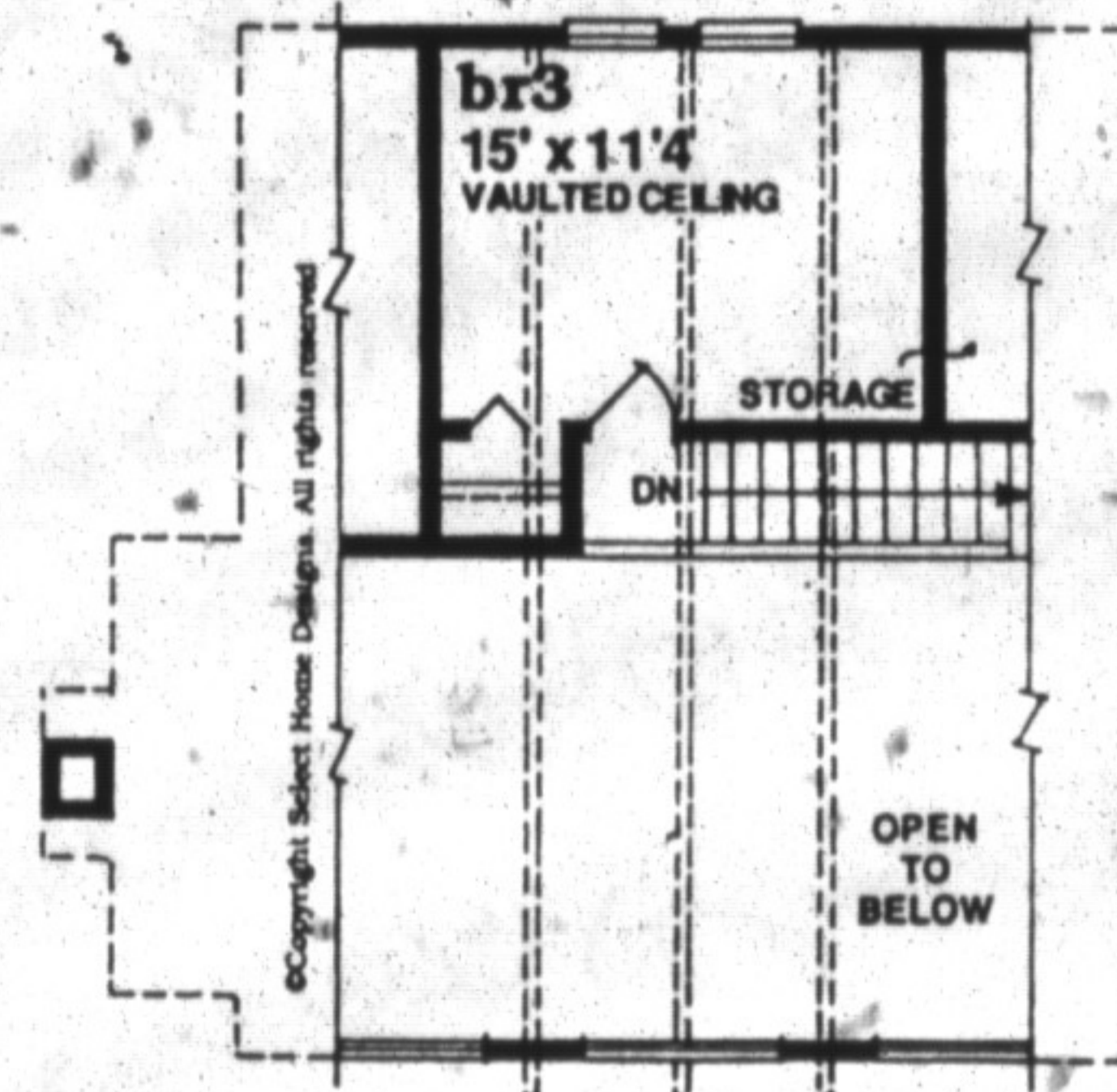
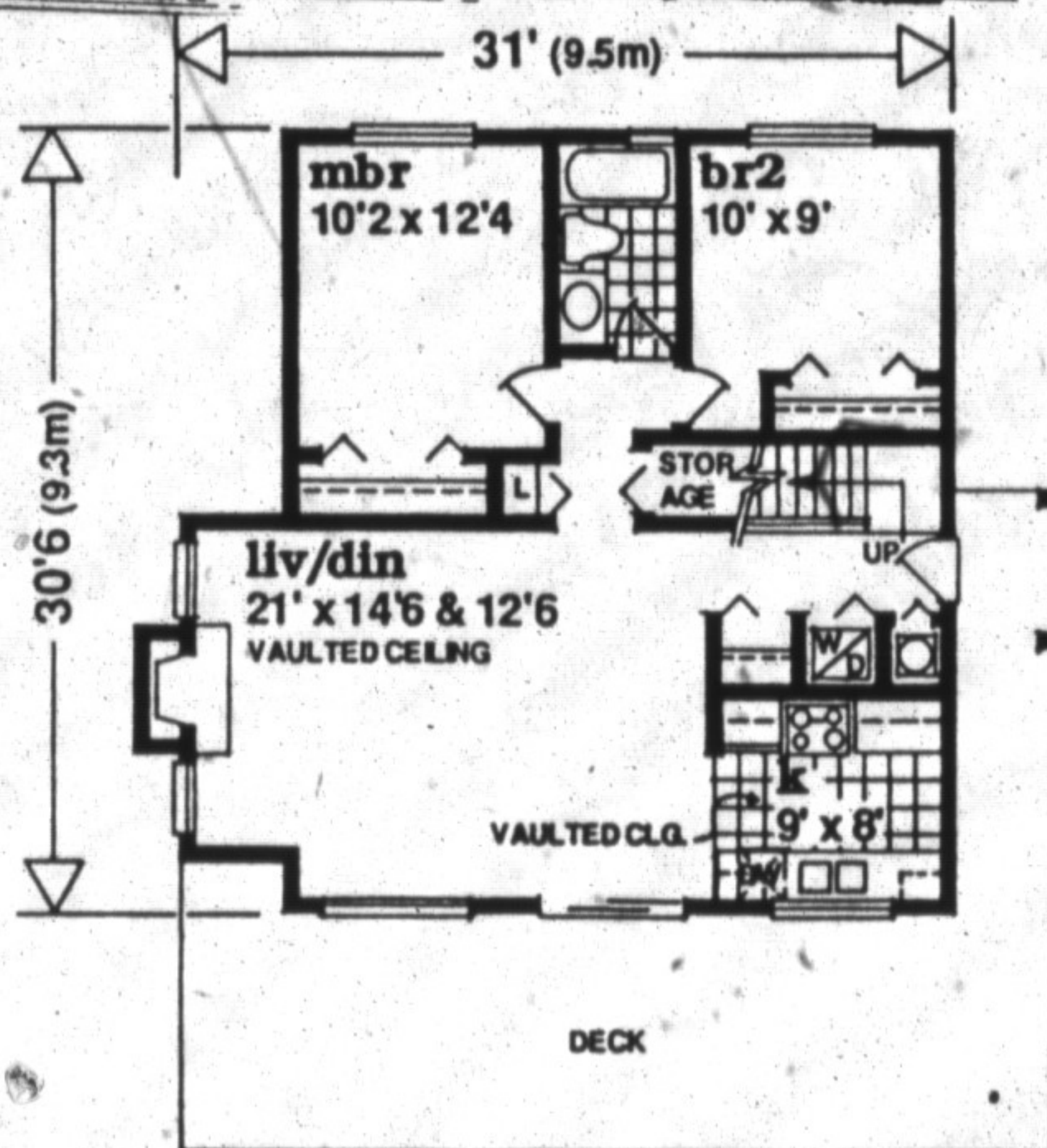
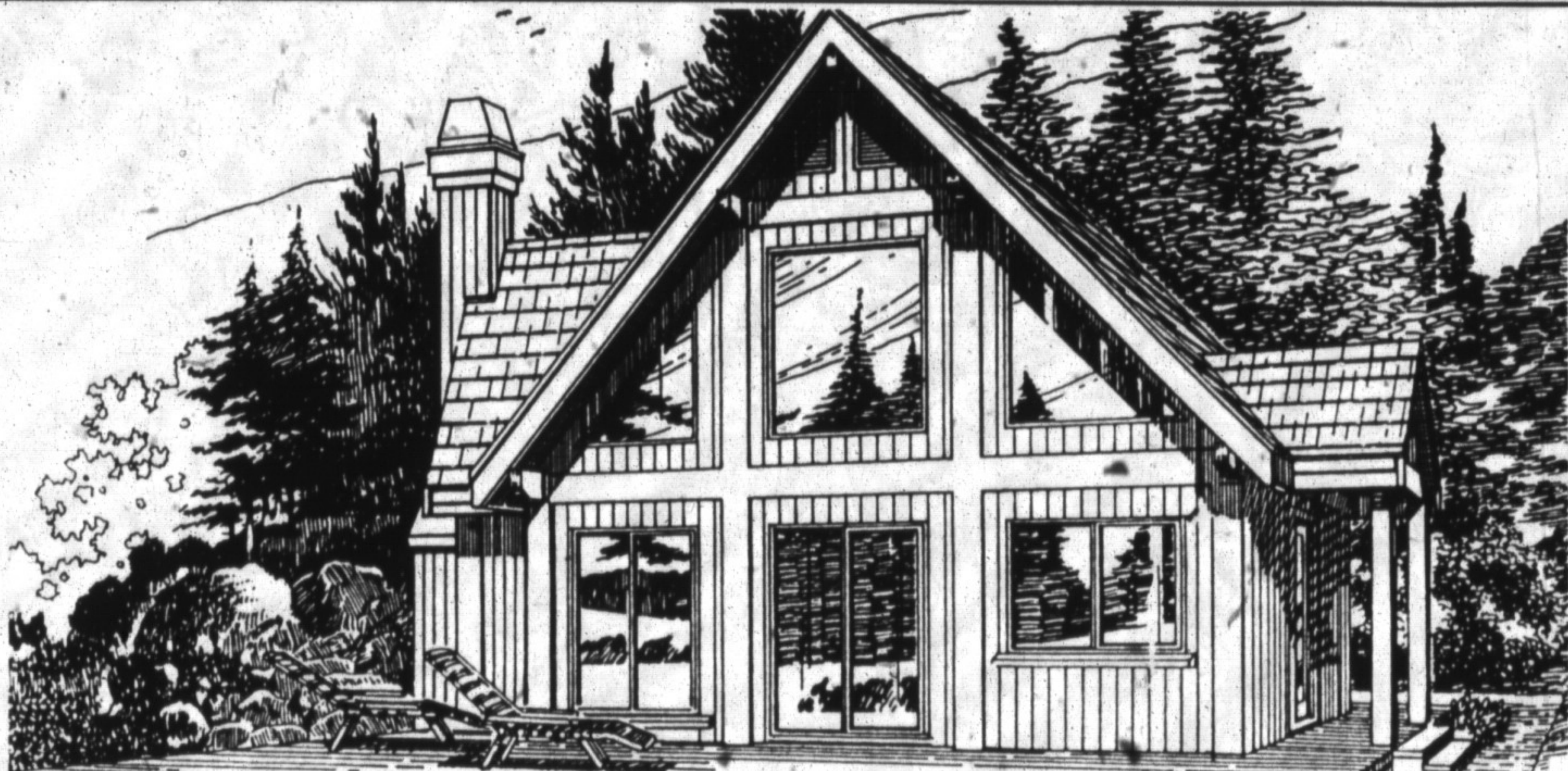


DESIGN for LIVING Cottage comfort

© Copyright
SELECT HOME DESIGNS

- Covered walkway provides a practical and attractive entry.
- Windows galore and sliding glass doors take full advantage of the view.
- Vaulted ceilings throughout the living / dining room.
- Front deck invites outdoor relaxation, and is easily accessible from the living / dining room.
- Efficient corner kitchen opens to the dining room.
- Convenient storage space found under the stairs.
- Ample closet space can be found in all bedrooms.

Send for Canada's largest plan book with more than 500 home plans, including a wide variety of architectural styles from luxurious brick manors to affordable bungalows, only \$9.95 (including shipping and GST). To order using VISA or MasterCard, call toll-free 1-800-663-6739, fax (604) 251-3212, or send cheque or money order to Design for Living, c/o The Canadian Champion, #301, 611 Alexander Street, Vancouver, B.C., V6A 1E1. Trained consultants are standing by Monday to Saturday to take your order for the plan book, or to provide information about the plan featured in this column.



JOHN WEIDE
ASSOCIATE BROKER

COLDWELL BANKER

PINNACLE REAL ESTATE

Expect the best™

Your **HALTON, MILTON, OAKVILLE CONNECTION™**

905-338-5400

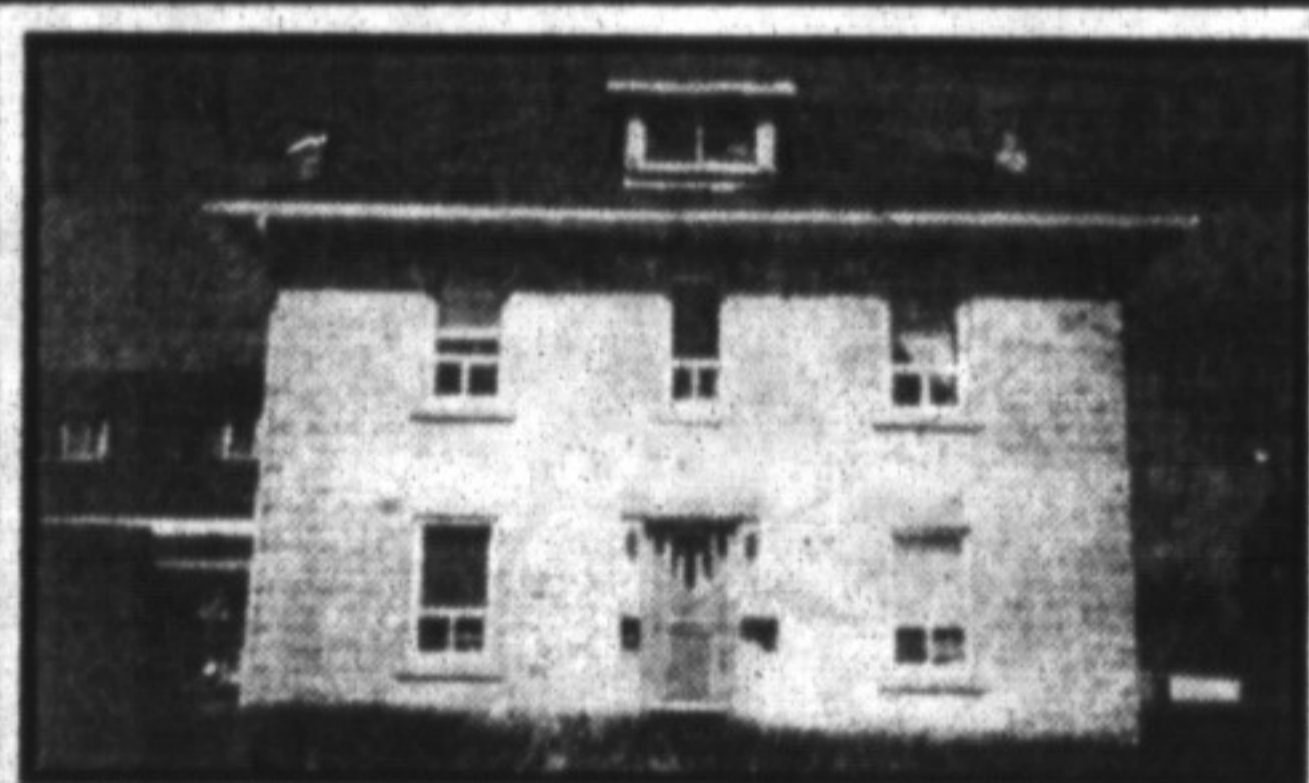


COUNTRY RANCH
Close to Milton, upgraded 3 bedroom home, large lot, view of Escarpment, **MAINTENANCE FREE!**

SOLD



GUELPH LINE
Large ranch, 3 bedrooms, dining, family room, sun room, office and separate workshop. Check it out!
SOLD
\$224,900



MILTON HEIGHTS

Large family home with many rooms, presently used as duplex. Asking only **\$179,900**



INDUSTRIAL LAND - MILTON

Just north of 401 on Third Line. 2.08 acres of valuable land together with solid built brick bungalow, well maintained, separate barn, excellent potential, many uses. **\$340,000**



FOR BUSINESS, DOCTOR'S OFFICE, TRADES, CHECK IT OUT!

Many opportunities for this fine quality upgraded home on Bronte Road. Property is large enough to park a truck and it has a separate 1800 square foot workshop! Beautiful large, farm style kitchen, main floor family rm, many, many extras! **\$214,900**



"LOST PARADISE" FOUND NEAR GEORGETOWN

A beautiful Escarpment vista, open floor plan, vaulted ceilings, floor to ceiling fireplace. Large picture window overlooking conservation lands, ravine, hills, valleys, majestic trees, nature at its best! A view for all seasons situated on 3+ acres. Close to Georgetown. Investigate! **\$399,900**



WANTED:

- Country home - bungalow preferred around **\$200,000**
- Country- modern executive home up to **\$600,000**
- Quality home up to **\$250,000** in Campbellville
- Milton- Large ranch private lot up **\$350,000**
- **City Buyers • Corporate Relocations**

Call **JOHN WEIDE** 338-5400**

Expect the best®