

RE/MAX

miltowne realty corporation
INDEPENDENTLY OWNED AND OPERATED

Going Above and Beyond For YOU!

#1 IN MILTON REAL ESTATE SALES & TRANSACTIONS

22 Ontario St. S.

E-mail address
miltowne@globalseve.on.ca

878-7777



FLORENCE WALTER

Sales Representative
878-7777 Office
878-0231 Res.
825-4485 Tor. Line



NATURE LOVER'S RETREAT

Beautiful 10 ACRE setting on the outskirts of Campbellville village. Enjoy all the benefits of the country with the convenience of Hwy 401 a few minutes away. 3 bedroom bungalow is located at the end of a long private laneway. Nicely wooded, trickling stream, a wildlife haven. All for \$239,900. Call me for more information today.



CAROL M. BROOKS

Sales Representative
Office:
(905) 878-7777
Residence:
(905) 875-0067
Toronto Line:
825-4485

RE/MAX
Miltowne
Realty Corp.



PICTURE PERFECT

You will fall in love with this lovely 4 bedroom traditional style home custom built home. 2 full bathrooms, main floor family room, fireplace sep. living room and din. room, bright new kitchen with walkout to large extremely private backyard with hot tub. Must see to fully appreciate. \$259,900.

THE PERFECT HOBBY FARM OPEN HOUSE SUN JULY 28TH, 2-4

Guelph Line North of 401 to 10th Side Road, Turn West



THE HOUSE

-custom built/centre hall
-4 bdrms (master with ensuite)
-separate living & dining rooms
-good size kitchen with separate dinette
-main floor fm. m/den
-floor to ceiling brick f.p.
-main floor laundry
-3 bathrooms -solarium



THE BARN

-20'x40'
-7 box stalls
-Floor screening & drainage
-Good size hay loft
-Tack/ feed room.
-Water / hydro



THE PROPERTY

-5 acres very secluded
-6 fenced paddocks
-in ground kidney shaped pool
-pretty landscaping
-excellent location
-convenient to village of Campbellville & Milton
-minutes to 401 for commuters.



A '10'

You must see this beautiful country bungalow. Recently professionally redecorated. New kitchen, large liv./din. room with fireplace, lovely family room with built in bookcases, 3 bedrooms, ensuite bath, new sunroom. \$277,000

THE TOTAL PICTURE: COUNTRY LIVING AT IT'S BEST \$324,900



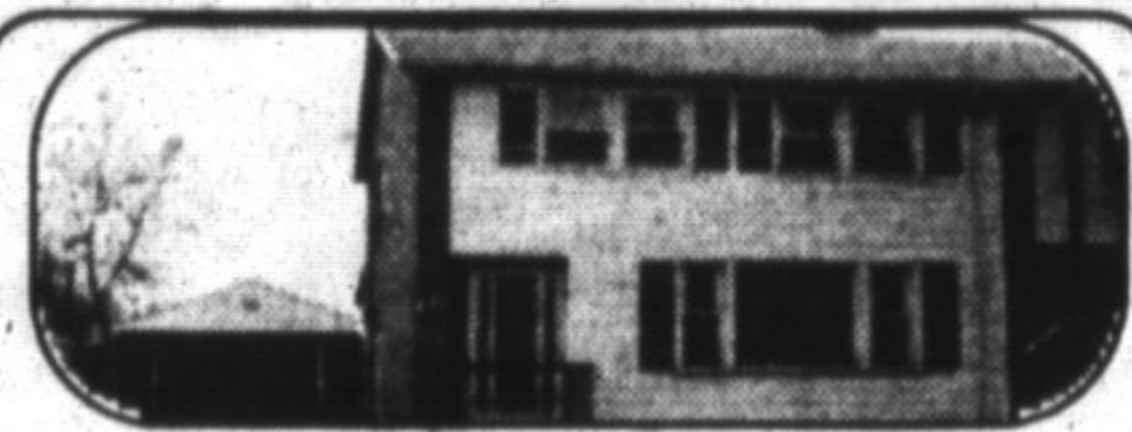
SCOTT B. PRIOR

associate BROKER
(905) 878-7777 TOR (905) 825-4485

Just a thought ...
Every accomplishment starts with the decision to try.

VACANT LAND

Excellent building lot, 200' x 400' (1.82 acres), well on property (10 gallons/minute), only minutes from James Snow Parkway, situated between Milton and Georgetown. Asking \$159,900.



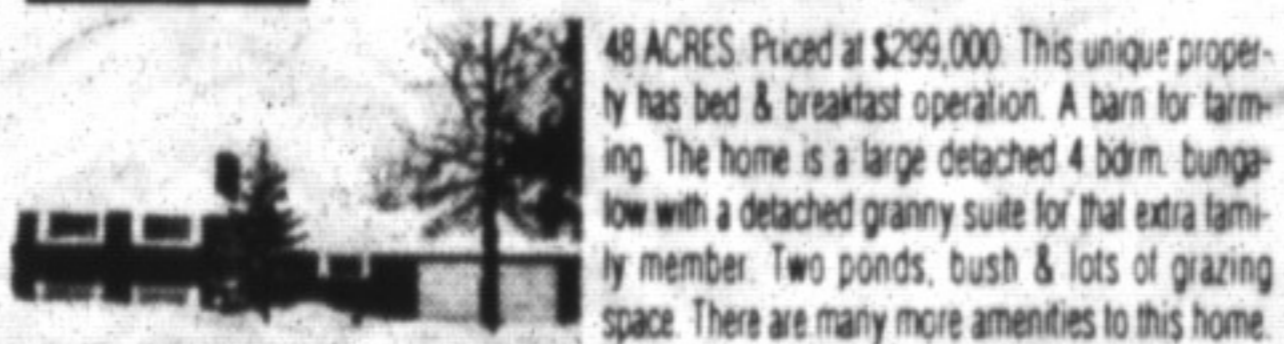
RENT NO MORE!

At this price, owning your first home can be a reality! Located on a large lot in desirable mature Milton, this cute 3 bedroom semi features an upgraded kitchen, central air and a finished basement with 3 piece bath. Offered at \$149,900.



JACK McCRUDDEN

Associate Broker
878-7777



48 ACRES. Priced at \$299,000. This unique property has bed & breakfast operation. A barn for farming. The home is a large detached 4 bdrm. bungalow with a detached granny suite for that extra family member. Two ponds, bush & lots of grazing space. There are many more amenities to this home.



Maintenance Free. This charming townhouse located on Childs Drive is in move-in condition. It has an open concept with a finished basement. The kitchen has had thousands of \$\$\$ spent recently in renovations. This would be fine living. End unit.

Entertainment centre. This one owner bungalow home is ideal for entertaining and those people who need extra living space. It has 3 bedrooms on the main floor and two additional ones on the lower level. A great deck with a pool. Eat-in kitchen and very nicely landscaped.

FOR SALE: 1200 sq. ft. Industrial unit \$64,000.
FOR LEASE: 1800 sq. ft. available immediately \$650 per month.

For information on these please contact:
JACK McCRUDDEN



LINDSAY J. McLAREN

Sales Representative
878-7777 Office
(Res.) 854-2451 (Tor. Line) 825-4485

CLOSE TO EVERYTHING



Family-sized 4-bedroom split level home located close to schools, sports areas and shopping in Timberlea. A lovely renovated oak kitchen, oak wainscoting in halls, main floor family room with fireplace, and interlocking stone front patio make this home a must to be seen.

Lindsay J. McLaren WAS \$219,900
Now \$214,900

COUNTRY SOLITUDE



Quality built 7 year old brick bungalow on a beautiful 2 acre country lot. Approximately 2,000 square feet featuring Hollywood style kitchen 3 1/4" cherry hardwood floors, 3 bedrooms, 3 1/2 PC. Washrooms, great room with fireplace, sun room. Numerous walkouts to decks and patios, plus grade level spacious in-law/manny suite, completely finished, oversized 2 car garage. Many extras!

Lindsay J. McLaren Value Priced at \$329,900

WOODED SECLUSION



A spectacular wooded lot is the setting for a well built all brick bungalow, located on the beautiful Niagara escarpment. Three plus bedrooms, 2 1/2 bathrooms, large deck off family room and kitchen and a main floor den and balcony. All of this within minutes of town. For further information contact:

Lindsay J. McLaren .Was \$299,900
Now \$279,900

CENTURY FARM - 111 ACRES



This corner farm is situated very close to Campbellville and has bank barn and approximate 70 acres of acreable land. Brick home is in need of complete restoration. Excellent long term investment.

Lindsay J. McLaren Asking \$389,900

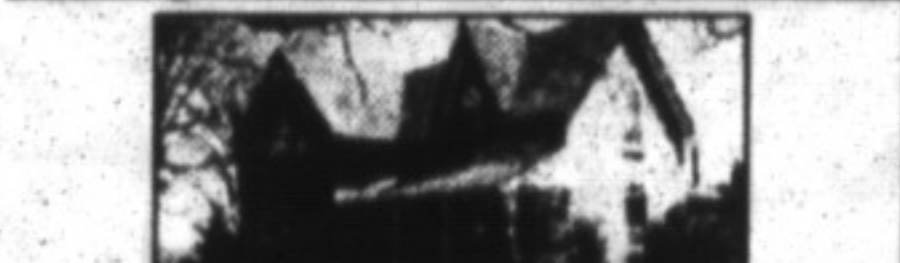
WHY PAY RENT?



Lovely townhome at an affordable price. Three bedrooms, eat-in kitchen, private backyard. Ideal for first-time buyers or empty-nesters.

Lindsay J. McLaren ... \$109,900

ONE OF A KIND



CENTURY STONE, C'VILLE High on a hill with maple tree-lined drive, this 12 acre property with fruit trees and open fields, features an immaculate renovated gabled farmhouse with 4 bdrms, 3 baths, comfortable L.R. & D.R., large country sized kit, M.F. sun rm with F.P. & walkout, fin. bsmt. & huge oversized 2 car garage. Ideal for small horse farm or country retreat. Was \$439,900
Lindsay J. McLaren Now \$339,900

TIMBERLEA EXECUTIVE BACKSPLIT

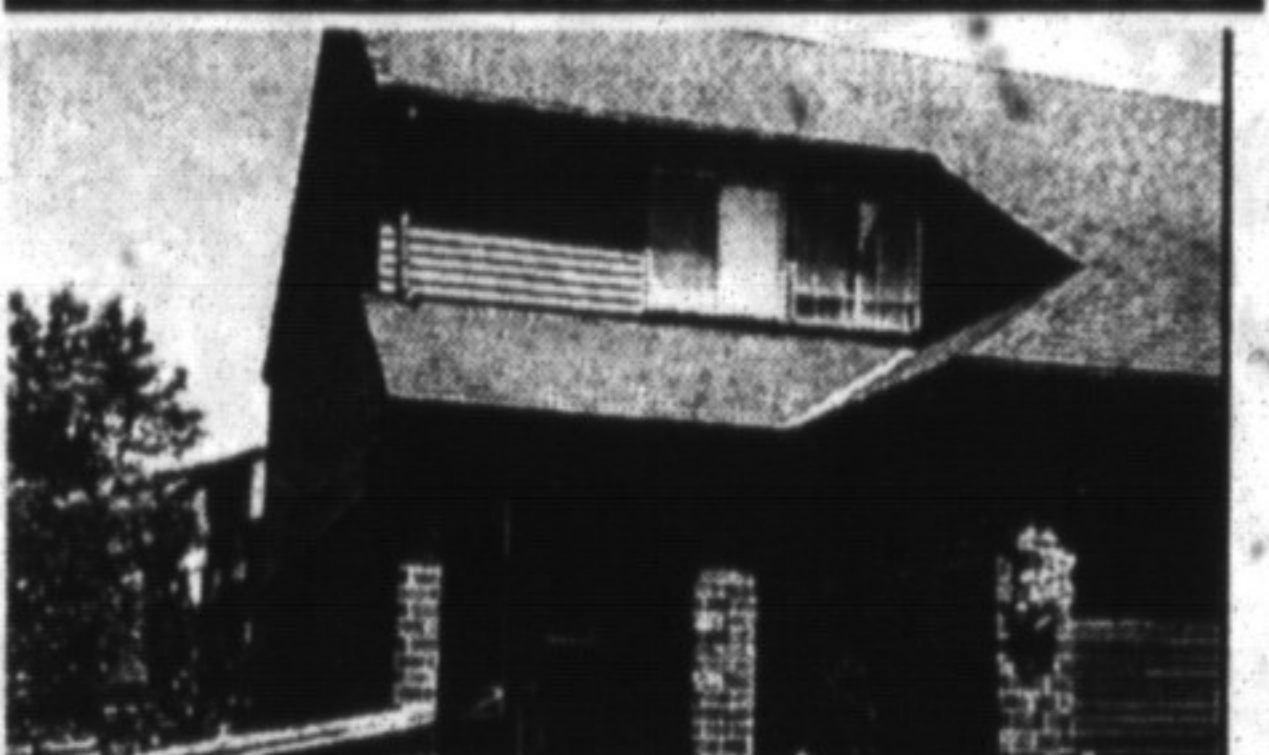


Huge 5 level, brick, large family home featuring L.R., DR, eat-in kitchen, 3 1/2 baths, huge family room with gas FP and w/out to covered deck, den, main floor laundry, inground pool, extra deep lot and sep. entrance to 2nd living area with kitchen, bath, BR, and large LR. Was \$237,900
Lindsay J. McLaren Now \$229,900

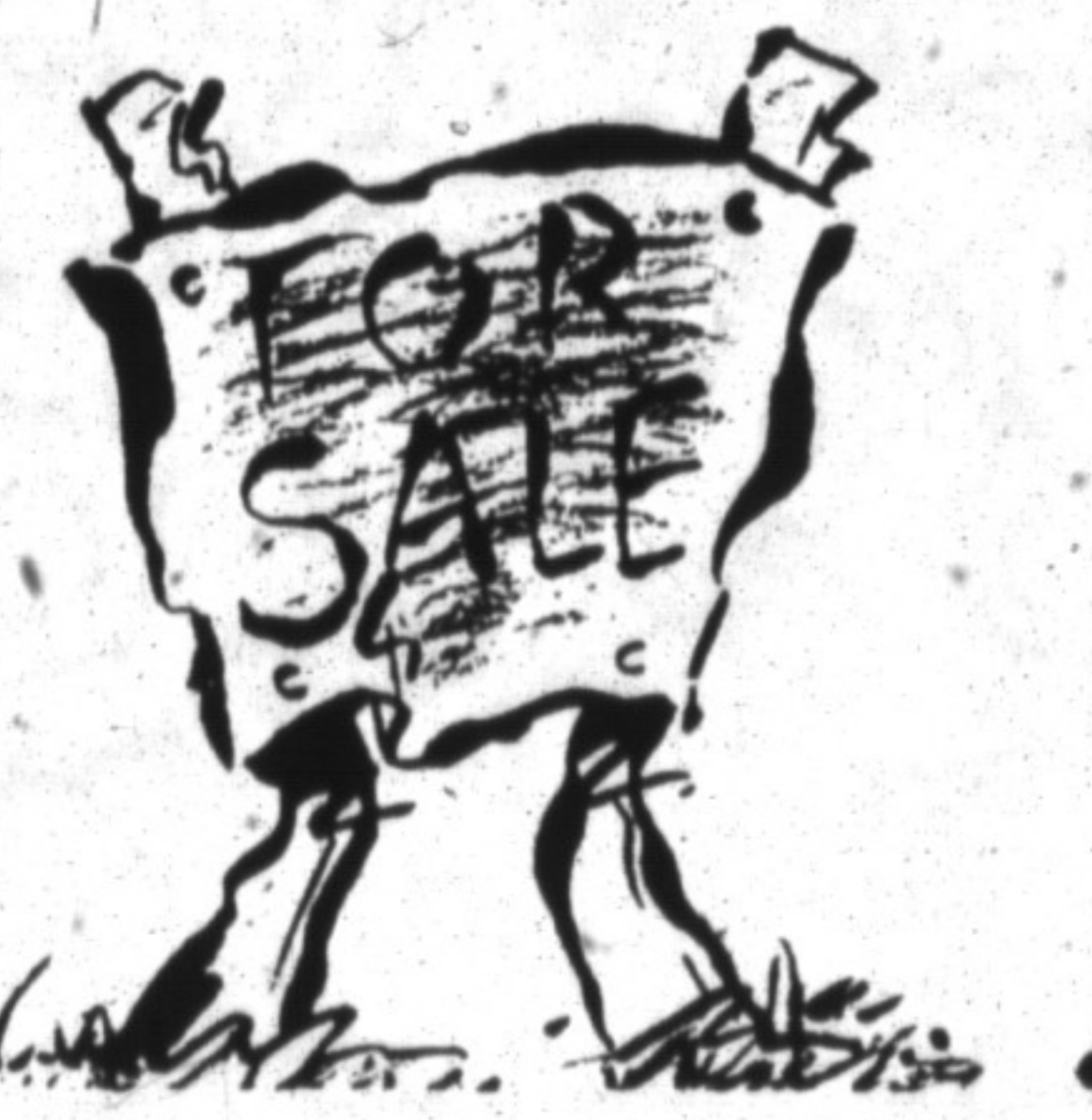
BETTY INGLE R.R.S.

Sales Representative
Registered Relocation Specialist
Office: 878-7777
Res: 827-4286
Tor. Line: 825-4485

LOVELY 3 BEDROOM TOWNHOUSE



Finished basement, neutral broadloom end unit with garage, air conditioning. A must-to see, priced at \$127,900. Phone Betty for your appointment to view.



Don't wait. Call RE/MAX first.
Milton's #1 Real Estate Company
For years & years & years



Office:
878-7777
Residence:
875-4698
Toronto Line:
825-4485

HEATHER ASHBEЕ

Sales Representative



INCOME PROPERTY Custom-home on 46 acres super sep. Main floor in law apt. Apple orchard operation for extra income. Barn with cold storage & trailer with own well & septic. \$599,000



42 AC, HOBBY FARM \$359,000 Bright open concept bungalow with finished walkout basement, 3 car garage & studio. 30x60 6 stall barn, paddocks, woods & stream.



BROOKVILLE ESTATES 2 ac. hilltop location, privacy & views abound, winding circular drive leads to this 4 br custom home, tennis court for the sportsman. \$319,000.



BEAUDAICIOUS BUNGALOW! Finished in quality top to bottom. Solid oak kitchen, open concept room, insulated heated garage, 1/2 pool surrounded by privacy & mature landscaping. A must see.

IMMACULATE TOWNHOUSE

CALLING ALL 1ST TIME BUYERS! Bright & spacious, quiet location, updated kitchen, bathroom retiled - Lots of extras \$118,900.

CAMPBELLVILLE EXECUTIVE

1.4 ac. landscaped gardens, pond, 4 BR, 4 baths, main floor office, sunny greenhouse kitchen, Natural gas heat. Now \$325,000.