

The Canadian
Champion

BEST HOMES

MILTON, ONTARIO

878-2341

JULY 31, 1996

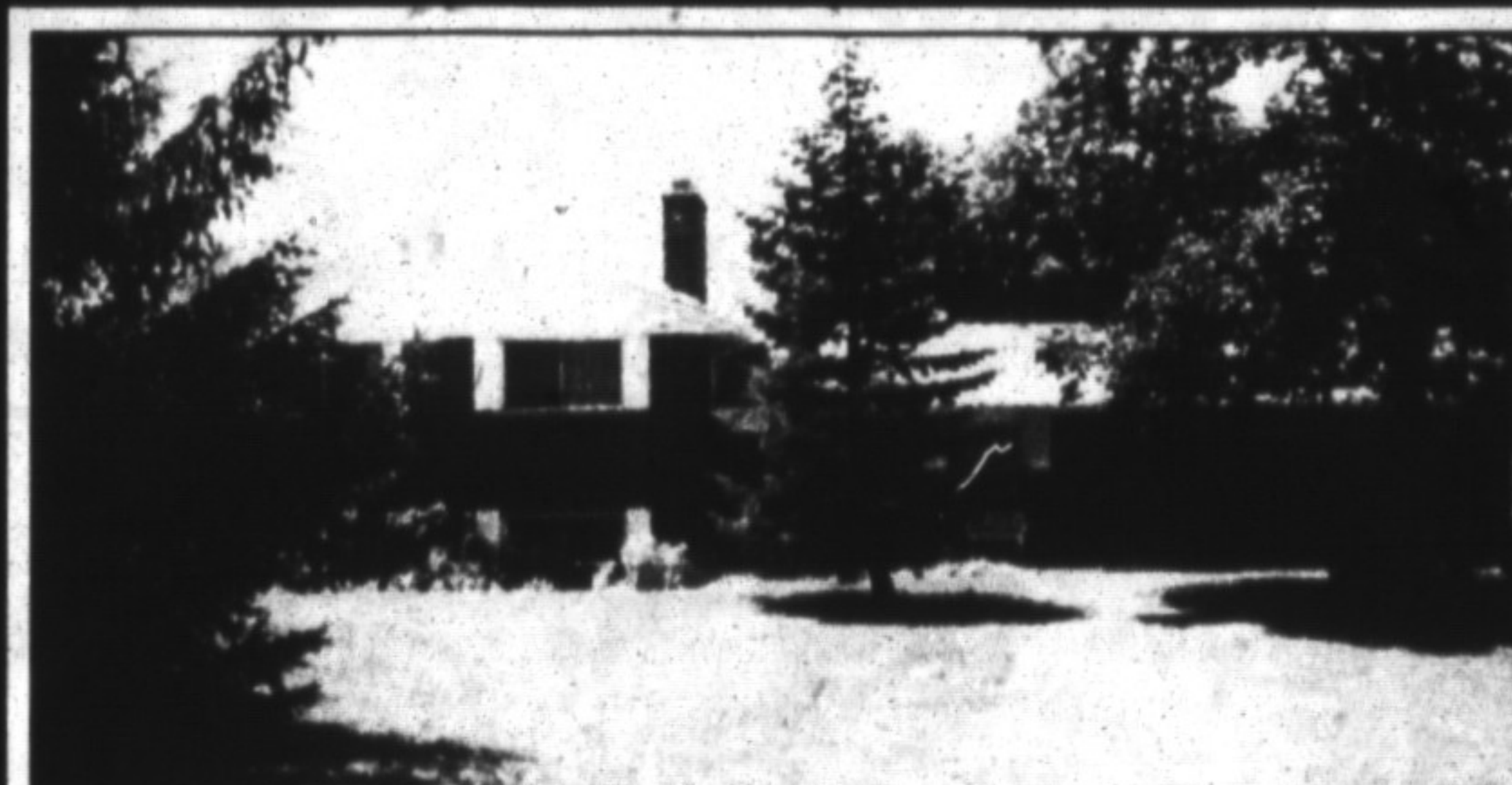


\$252,500

RE/MAX

RAVINE LOT IN DESIRABLE AREA. Beautifully maintained home has 4 good sized bedrooms, large family room, terrific solarium with gas fireplace and all the extras you'd expect in an executive home.

RE/MAX MILTOWNE REALTY CORP.
RICHARD HIERMAN - 878-7777

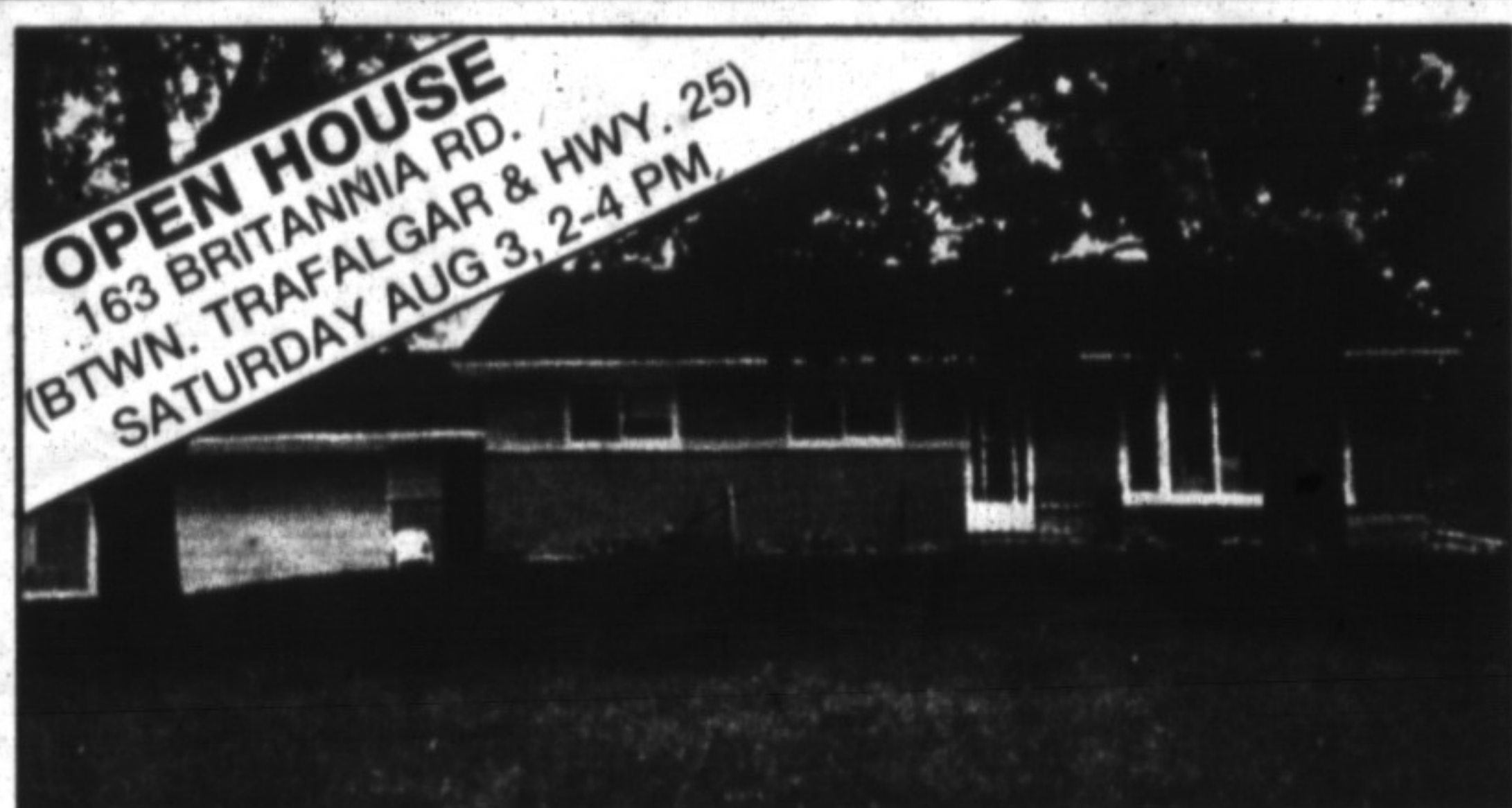


\$299,000

RE/MAX

48 ACRES This unique property has bed & breakfast operation. A barn for farming. The home is a large detached 4 bdrm. bungalow with a detached granny suite for that extra family member. Two ponds, bush & lots of grazing space. There are many more amenities to this home.

RE/MAX MILTOWNE REALTY CORP.
JACK M'CRUDDEN - 878-7777



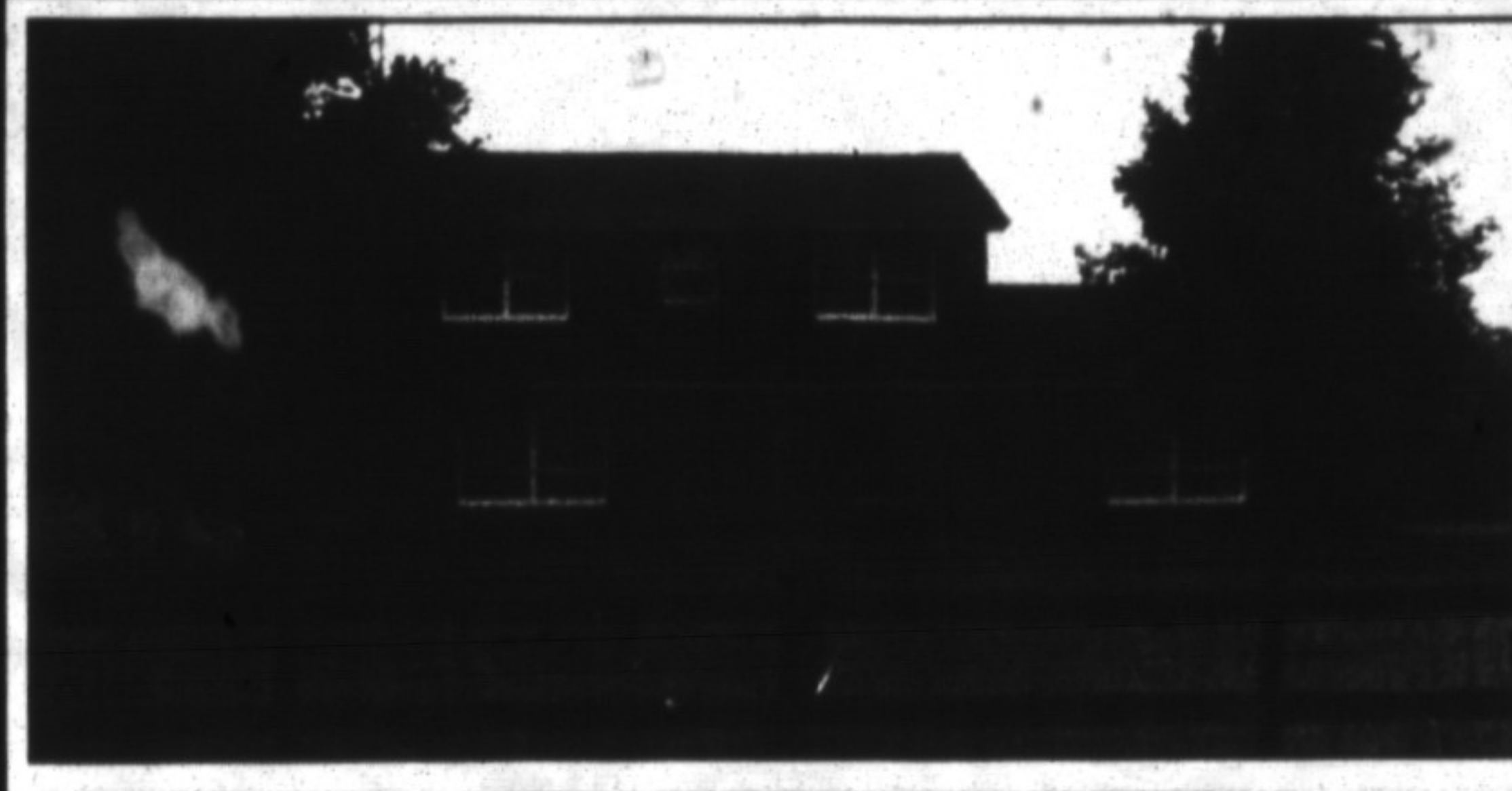
OPEN HOUSE
163 BRITANNIA RD.
(BTWN. TRAFALGAR & HWY. 25)
SATURDAY AUG 3, 2-4 PM

\$185,000

ROYAL LEPAGE

EAST OF MILTON LOCATION Great opportunity to own your own country home. "Three garages", 1/2 acre lot with mature trees, hardwood floors, woodstove & patio doors to deck. Just call for details.

ROYAL LEPAGE REAL ESTATE SERVICES
VIRGINIA BRAZEAU - 878-8101



\$310,000

ROYAL LEPAGE

1 ACRE - OAKVILLE/ MISSISSAUGA/ MILTON - Ideal location for this fabulous 4 bedroom executive with gleaming hardwood floors, new white kitchen, main floor office plus family room with fireplace. \$310,000. Call for info.

ROYAL LEPAGE REAL ESTATE SERVICES
VIRGINIA BRAZEAU - 878-8101



\$209,000

ISR

REDUCED - Gorgeous ravine lot in town: Move in condition, many extras including finished basement with brick fireplace, loads of upgrades. For details and to view call Joyce.

JOYCE SCOTT REAL ESTATE INC.
JOYCE SCOTT - 878-1526



\$224,900

ISR

CUSTOM BUILT - Excellent condition with many upgrades for comfort including a beautiful addition on main floor and basement. **Picture perfect ravine lot.** For details on this lovely property call Joyce.

JOYCE SCOTT REAL ESTATE INC.
JOYCE SCOTT - 878-1526