

BEST HOMES

MILTON, ONTARIO

878-2341

JUNE 26, 1996



\$189,900 **RE/MAX**

BEAUTIFUL 3 BEDROOM BUNGALOW on large lot. Features hardwood floors, upgraded kitchen, professionally finished basement with bar and gas fireplace, neutral broadloom, 1 1/2 car garage. This is a must see. Asking \$189,900... Call today.

RE/MAX MILTOWNE REALTY CORP.
BETTY INGLE — 878-7777



\$197,000 **RE/MAX**

7 YEAR OLD CUSTOM BUILT CHARMER. Well done inside and out. 5 minutes north of Milton on pretty treed lot. Wrap around deck to enjoy country living.

RE/MAX MILTOWNE REALTY CORP.
CAROLE D. BUDWORTH — 878-7777



\$269,000 **RE/MAX**

COUNTRY PRESTIGE Lavishly appointed. We challenge you to find a nicer finished home in this price range. Lots of space over 3500 sq. ft. Lots of upgrades (custom built for present owners). Close to town, on town water, make a smart decision. Unbelievable! Was \$284,500 Now \$269,000

RE/MAX MILTOWNE REALTY CORP.
GLEN OR GARY THOMAS — 878-7777



ROYAL LEPAGE

JUST MINS. NORTH OF DOWNTOWN MILTON 12.5 acres—all usable! Very pretty property surrounds this 4 bedroom executive. 3 stall barn, paddocks, pasture—just waiting for your viewing only \$389,000.

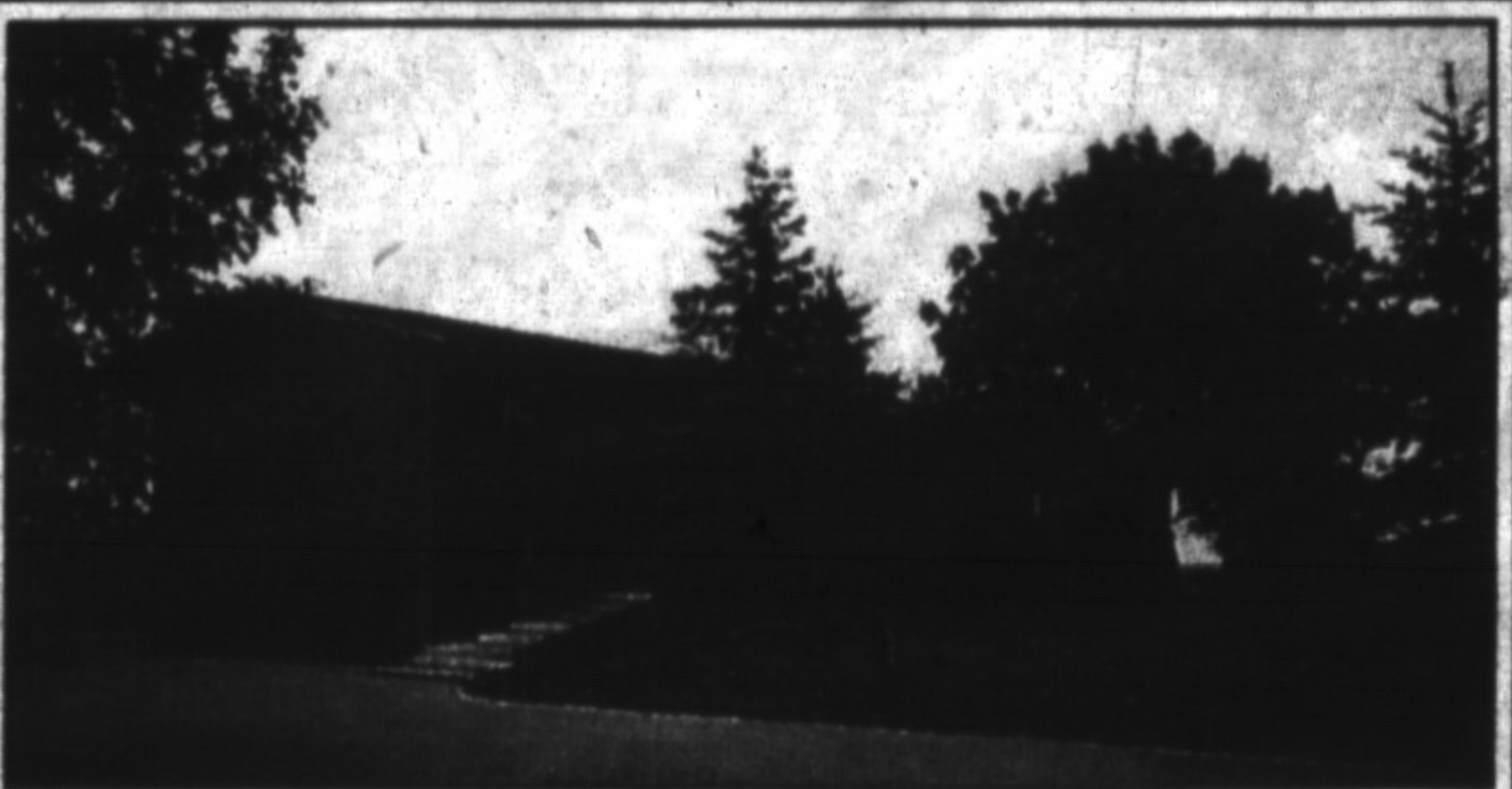
ROYAL LEPAGE REAL ESTATE SERVICES
VIRGINIA BRAZEAU — 878-8101



\$242,000 **ROYAL LEPAGE**

YOU'LL BE PROUD To purchase this home so well cared for, separate dining room, corner brick fireplace, eat-in kitchen with walkout, close to all conveniences.

ROYAL LEPAGE REAL ESTATE SERVICES
EVA GOODING — 878-8101



CAMPBELLVILLE REALTY INC.

CUSTOM BUILT HOME Relaxed family living in this spacious four bedroom split level home situated on a 1/2 acre country lot located South of Milton—only minutes from the 401 & 403. Features walk-out from bedrooms to deck, master with cathedral ceiling and ensuite, living/dining room with cathedral ceiling, cedar & stone walls, floor to ceiling stone fireplace, ground level family room with fireplace & walkout to patio

CAMPBELLVILLE REALTY INC.
SYLVIA BURSEY — 874-2294