

HUNT

SALES SATISFACTION

CUSTOMER SATISFACTION

SPECIAL DEALER PRICING FOR SUMMER!

WITH PRICES LIKE THESE NOW IS THE TIME TO BUY!

SUMMER SAVINGS EXPLOSION

ASK ABOUT FACTORY REBATES OR SPECIAL FINANCING

CHRYSLER VALUE CHALLENGE

ATTENTION ROYAL BANK CARD HOLDERS
Your Visa Gold Card Reward Points may now be applied against new Chrysler, Plymouth or Dodge Truck purchases or leases at Hunt Plymouth Chrysler staff for full details.



1996 Chrysler Intrepid **\$19,988*** PLUS FREIGHT
GOLDKey

- 22C Package**
- 3.3L, 161 hp, V6 engine
 - Dual air bags
 - Air conditioning
 - 4 speed automatic transmission
 - Power windows & locks
 - 16" polycast wheels

LEASE FOR \$279 a month for 30 months plus \$3200 down payment or equivalent trade and \$325 security deposit and \$790 freight. Ask about our No Money-Down Option.



1996 Neon Highline **\$13,688*** PLUS FREIGHT
GOLDKey

- 22D Package**
- 2.0L, 16V, 132 hp SOHC engine
 - Dual air bags
 - Automatic transmission
 - Cab-forward design
 - No-charge air conditioning
 - AM/FM stereo

LEASE FOR \$189 a month for 30 months plus \$2100 down payment or equivalent trade and \$225 security deposit and \$630 freight. Ask about our No Money-Down Option.



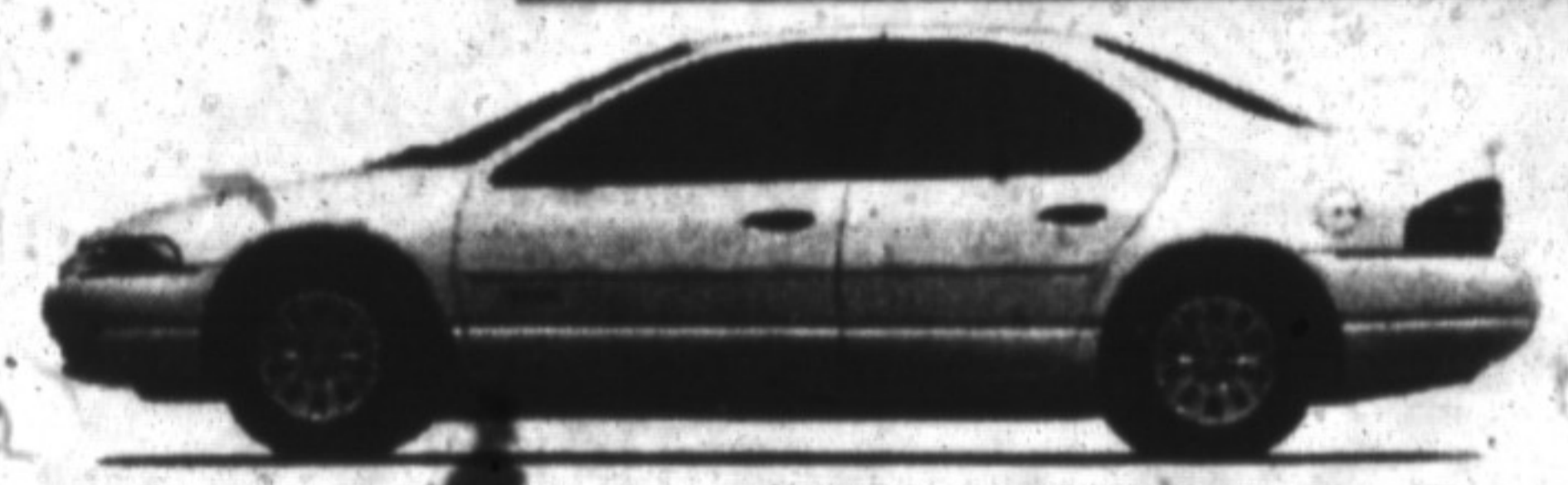
GOLD KEY LEASE



1996 Family Value Pkg. Voyager **\$19,988*** PLUS FREIGHT
GOLDKey

LEASE FOR \$249 a month for 30 months plus \$2400 down payment or equivalent trade and \$300 security deposit and \$840 freight. Ask about our No Money-Down Option.

VISIT OUR AWARD WINNING DEALERSHIP

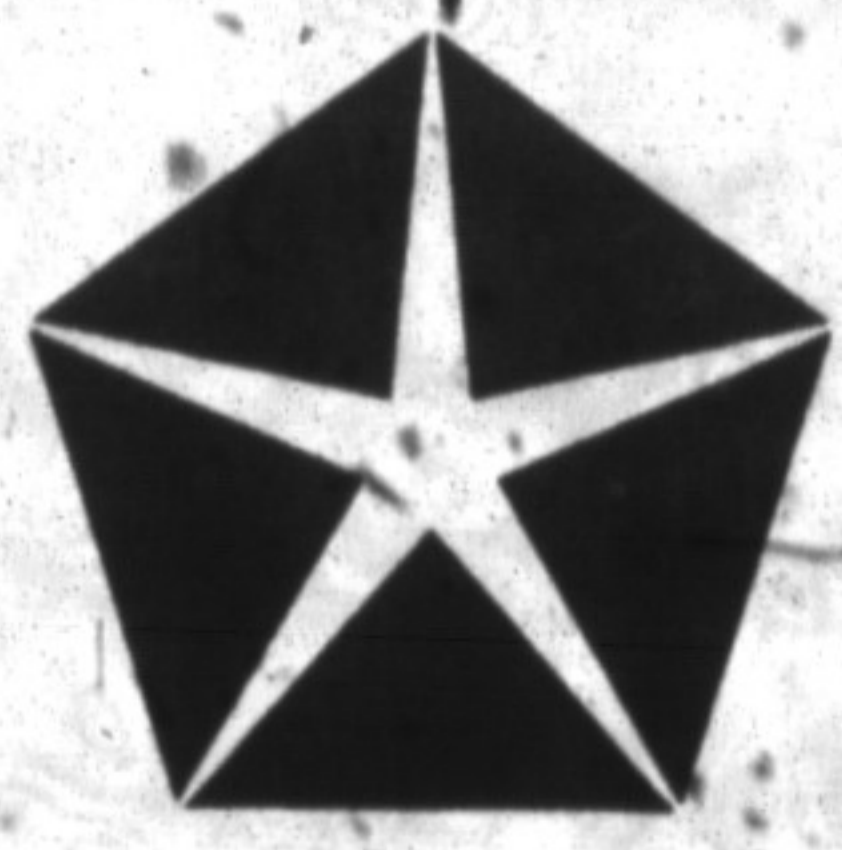


1996 Plymouth Breeze **\$17,688*** PLUS FREIGHT
GOLDKey

- 24A Package**
- 2.4L, multi-valve 150 hp engine
 - Dual air bags / side-guard door beams
 - 4-speed automatic transmission
 - AM/FM stereo cassette
 - Full folding rear seat back
 - Air conditioning

LEASE FOR \$189 a month for 30 months plus \$2100 down payment or equivalent trade and \$225 security deposit and \$630 freight. Ask about our No Money-Down Option.

WHEN YOUR DEALING WITH HUNT YOU'RE DEALING WITH EXCELLENCE



HUNT

PLYMOUTH CHRYSLER

WHEN YOUR DEALING WITH HUNT YOU'RE DEALING WITH EXCELLENCE

| | |
|-------------|------------|
| 401 | |
| Steeles Ave | Hwy 25 |
| 55 | Main St |
| HUNT | Derry Road |
| | Hwy 25 |

500 BRONTE STREET, MILTON

SALES SATISFACTION CUSTOMER SATISFACTION SERVICE EXCELLENCE PARTS EXCELLENCE

SERVICE EXCELLENCE PARTS EXCELLENCE SALES SATISFACTION CUSTOMER SATISFACTION SERVICE EXCELLENCE PARTS EXCELLENCE

SERVICE EXCELLENCE PARTS EXCELLENCE SALES SATISFACTION CUSTOMER SATISFACTION SERVICE EXCELLENCE PARTS EXCELLENCE