

RE/MAX
 miltonwe realty corporation
 INDEPENDENTLY OWNED AND OPERATED

Going Above and Beyond For YOU!

#1 IN MILTON REAL ESTATE SALES & TRANSACTIONS

22 Ontario St. S.

E-mail address
 miltonwe@globeserve.on.ca

878-7777



Office:
 878-7777
 Residence:
 875-4698
 Toronto Line:
 825-4485

HEATHER ASHBE
 Sales Representative



EXECUTIVE CAMPBELLVILLE
 1-1/2 acres, beautifully landscaped garden & pond, 4 bedrooms, 4 baths, main floor office. Bright, sunny greenhouse, custom kitchen, oak hardwood & ceramic main floor - A must see!



RENOWNED ARGYLE FARM
 48 acres complete with the no-expense spared renovated homestead, 5 barns with a total of 50 stalls, 1/2 mile track & separate apt. - a thriving standardbred breeding farm.



RAVINE SETTING
 3/4 acre lot in the heart of Campbellville. Gracious raised Tudor with 4 bedrooms, spacious kitchen. Three walkouts to deck overlooking beautiful grounds. Town water supply, new high-efficiency gas furnace. Call me for details.

LOTS

50 ACRES - Prime Campbellville location. \$275,000. Great for horses and/or home.

2 ACRES Campbellville, super price, \$109,000.

COUNTRY LANE ESTATES

NEW!
 First Time Buyers Tax Rebate

MOFFAT
 Custom Homes on 1.48+ acres
GREAT VALUE from \$249,900
 Lots sold separately as well from \$84,900

LOOK FOR OUR MODEL HOME SOON

Call Heather Ashbee



THE TEAM

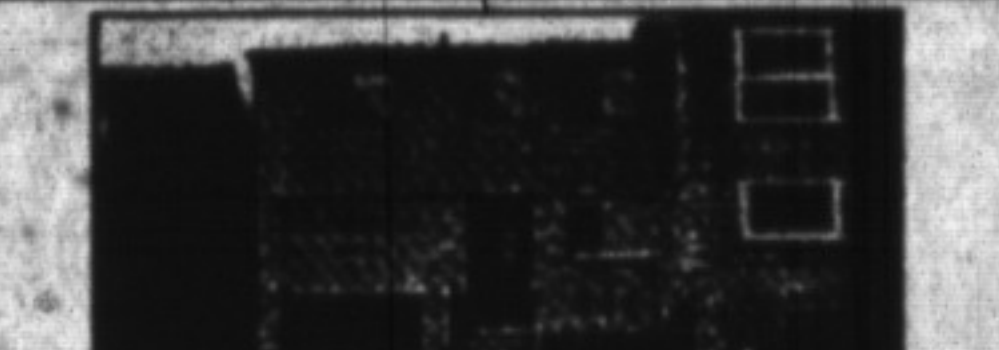
NEW LISTINGS



MILTON - This link comes complete with ceramic tile in foyer, baths, kit., new high efficiency gas heater and A/C in '90. Large wood deck total cost of over \$4,000. Fireplace, blinds, drapes, etc., all incl. \$173,990. A must see.



OAKVILLE - This incredible home located in the Glen Abbey area of Oakville. This prestigious home can be yours for \$330,000.



PICKERING - This out-of-town location is owned by an interior designer. It comes with all the extras - A/C, C/Vac, ELF, oak garage door, auto door opener, appliances, \$162,500.



MILTON - Why pay rent when you can own this spotless townhouse. First-time buyers give us a call. We can enlighten you, and show you all the steps in buying your first home. \$122,900.

Joe Manchio (sales representative), Tony Vidri and Domenic Manchio (licensed assistants to Joe) are

THE TEAM

RE/MAX MILTOWNE REALTY

46 Ronan Street, Milton	SOLD
20 9th Street, Milton	SOLD
422 Mountaineer Drive, Milton	SOLD
258 Steeles Ave., Milton	SOLD
716 Main Street E., Milton	SOLD
59 Bradford Street Holland Landing	SOLD
561 Childs Drive, Milton	SOLD
371 Bronte Street, Milton	SOLD
850 Third Line, Milton	SOLD



Call now for a FREE computer-assisted market evaluation with NO OBLIGATION

We take pride in all our clients. We look at each one's individual wants, needs, hopes and dream. Get THE TEAM working for you. Call us direct at 875-0899 or 878-7777

FEATURE HOME OF THE WEEK



Glen Thomas
 Sales Representative
 878-7777



GOWLAND CRESCENT
 Wonderful split level home backing onto greenspace ravine on one of Milton's finest streets. A definite must see.
\$252,500



Gary Thomas
 Sales Representative
 878-7777



FORGET ME NOT
 Great opportunity to move into a very clean, well kept home. 3 bedroom link home in nice neighborhood. Walking distance to tennis club, arena, and ball diamond facilities. Come view
\$161,500



COUNTRY PRESTIGE
 Lavishly appointed. We challenge you to find a nicer finished home in this price range. Lots of space (3000 sq.ft.) Lots of upgrades (custom built for present owners). Close to town, on town water. Make a smart purchase.
\$284,500



COME ON HOME
 This is a showplace! Excellent 3 bedroom sidesplit with upgrades throughout. Hardwood floors, tasteful decorating and a fantastic recently finished basement. Outstanding Buy.
\$188,500



INTRODUCING
 Fine country living just west of Campbellville. Bungalow with very tasteful addition & separate 2 car garage. Nice spot.
\$199,900



OWNER SAYS SELL!
 Excellent unit here. The 1225 square foot "Sherwood" with views of the pond & escarpment from the living room & kitchen. Make a nice buy today.
now \$148,500



ON THE MILL POND
 Outstanding opportunity to own one of Milton finest. Charming 3 bedroom century home with numerous upgrades. Stunning 25' glass walled great room overlooking the Pond.
\$279,000



IN-LAW POTENTIAL
 Charming home in village of Kilbride features recent addition at the back. Gas heat installed w/separate barn.
Now \$189,000



CONDO CORNER
81 MILLSIDE
 2 Bedroom \$139,900
 3 Bedroom Unit available. Nice side of the building with outdoor balcony. Four appliances & an undercover parking spot. NOW \$139,900

BETTY INGLE R.R.S.
 Sales Representative
 Registered Relocation Specialist
 Office: 878-7777
 Res: 827-4286
 Tor. Line: 825-4485



GORGEOUS BUNGALOW
 Lovely 3-bdrm bungalow, A/C with updated kitchen, hardwood floors, 2 baths, w/o large fenced lot, basement is perfect for party time with gas F.P., built-in bar w/ridge, neutral carpeting. 1-1/2 car garage, interlocking brick, must see to appreciate! Asking \$189,900.



INVESTMENT
 Commercially zoned bungalow. Income established. For more information call Betty. \$145,000.

JACK M'CRUDDEN
 Associate Broker
 878-7777

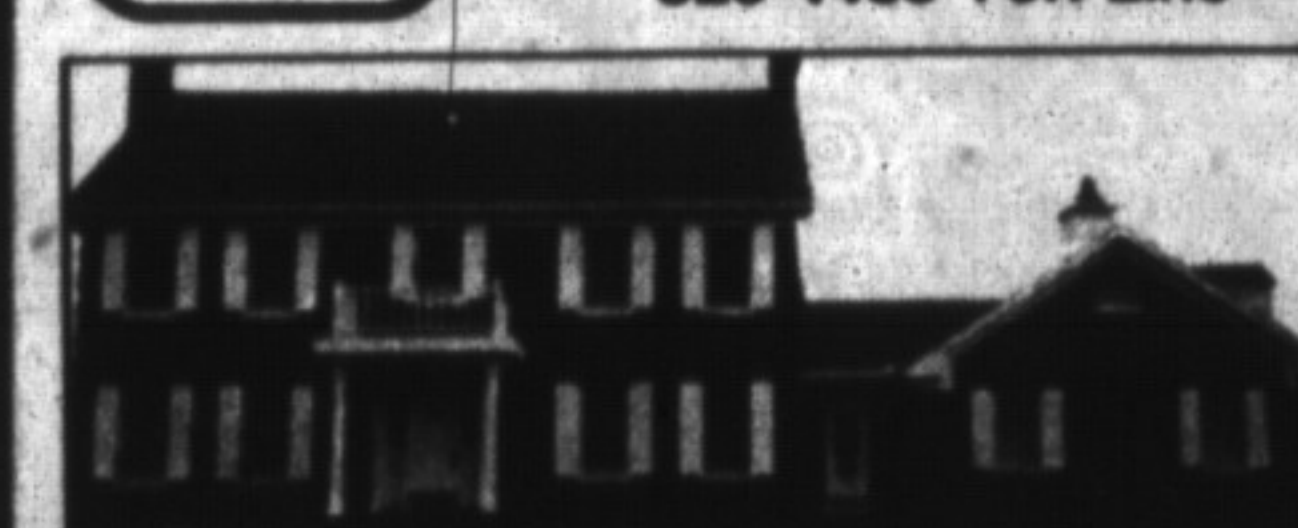


COME TO THE COUNTRY This home offers comfortable living on 48 acres with ponds, meadows and bush. This 4 bedroom home has a detached nanny suite and a steel barn which is ideal for horses and storage. Many upgrades has been done since 1992. This home is available for \$299,000 Call Jack \$299,900



NEW LINK - 3 BR close to schools, Fenced finished basement. This home has Twin "values priced at \$174,900.

FLORENCE WALTER
 Sales Representative
 878-7777 Office
 878-0231 Res.
 825-4485 Tor. Line



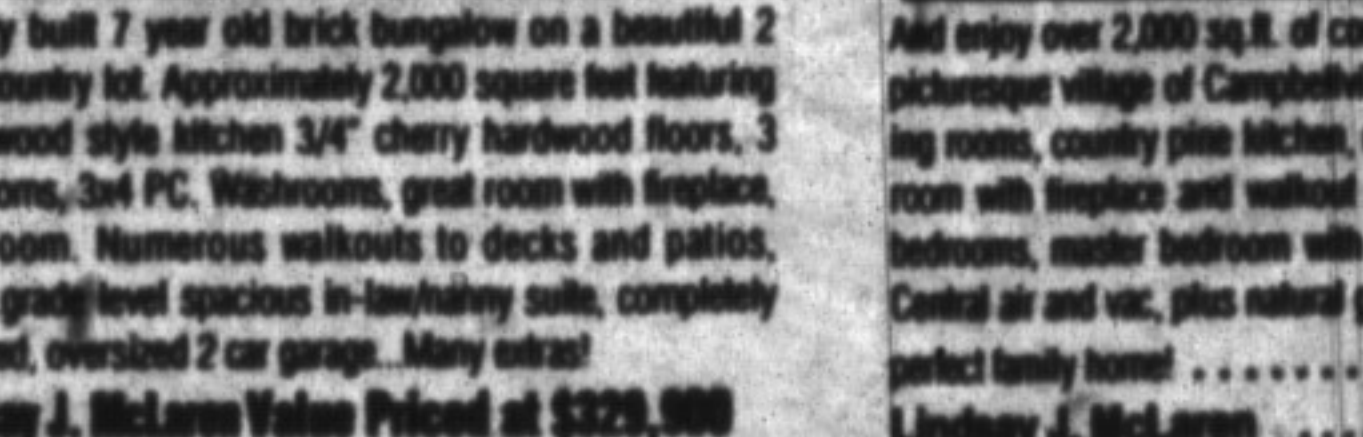
TOAD HALL
 10-acre estate, woods, meadow, I/G pool & sauna for luxurious executive living. Custom home is a "10" with sep. nanny's quarters. A must see! \$579,000.

LINDSAY J. McLAREN
 Sales Representative
 878-7777 Office
 Res: 854-2451 Tor. Line: 825-4485

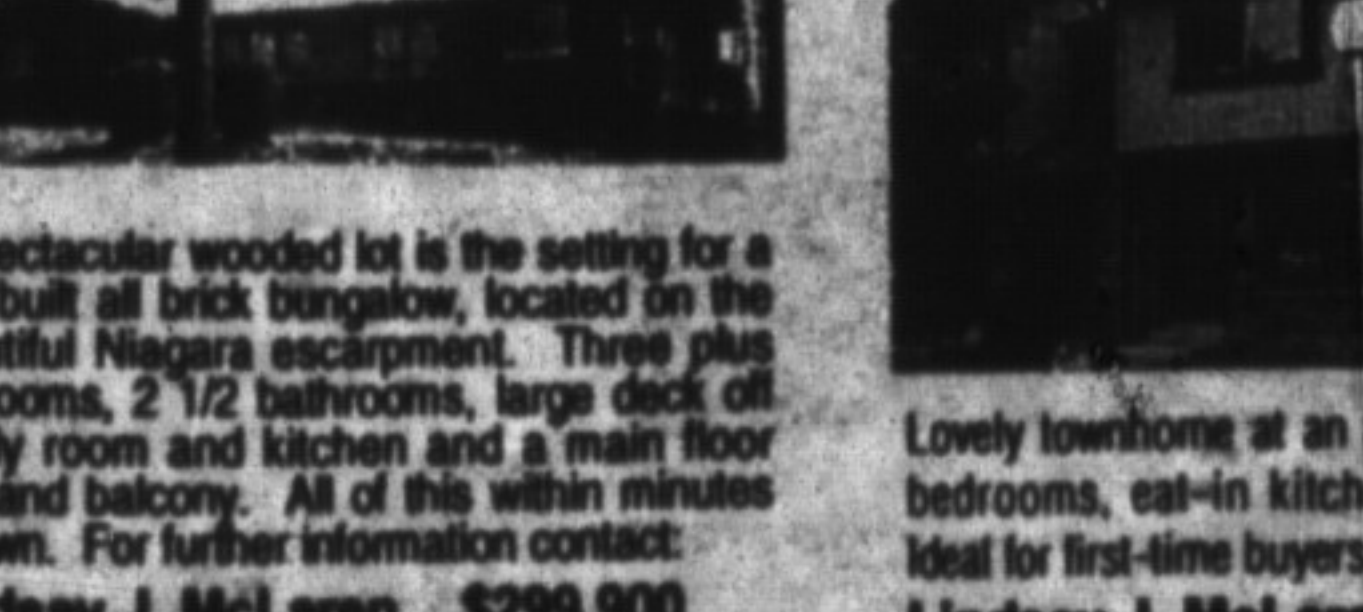


CLOSE TO EVERYTHING
 Family-sized 4-bedroom split level home located close to schools, sports areas and shopping in Timberlea. A lovely renovated oak kitchen, oak wainscoting in halls, main floor family room with fireplace, and interlocking stone front patio make this home a must to be seen.
 Lindsay J. McLaren ... Asking \$219,900

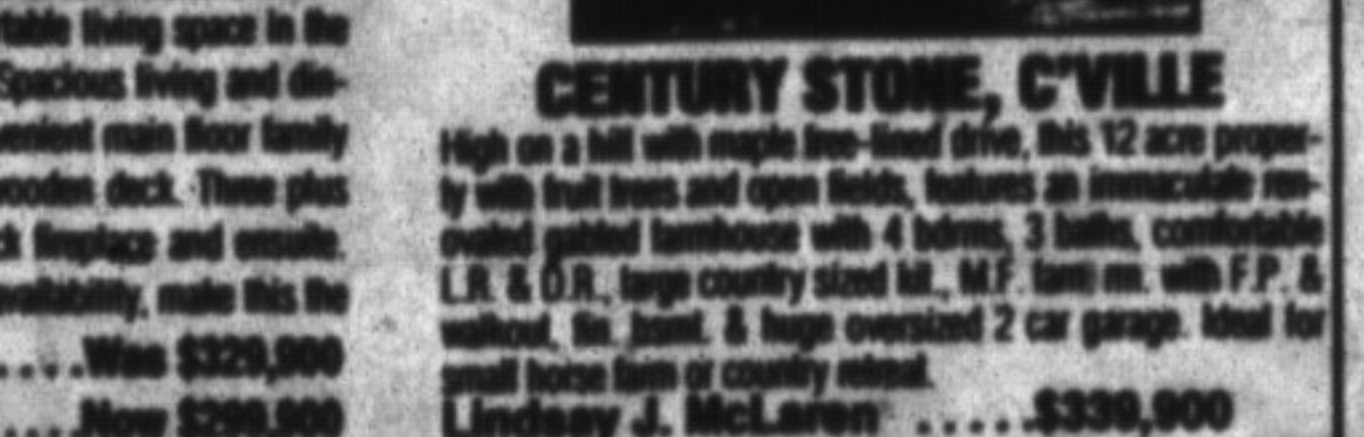
COUNTRY SOLITUDE
 Quality built 7 year old brick bungalow on a beautiful 2 acre country lot. Approximately 2,000 square feet featuring Hollywood style kitchen 3/4" cherry hardwood floors, 3 bedrooms, 3 1/2 PC, Walkers, great room with fireplace, sun room. Numerous walkouts to decks and patios, plus... great level spacious in-law/teeny suite, completely finished, oversized 2 car garage. Many extras!
 Lindsay J. McLaren Value Priced at \$329,900



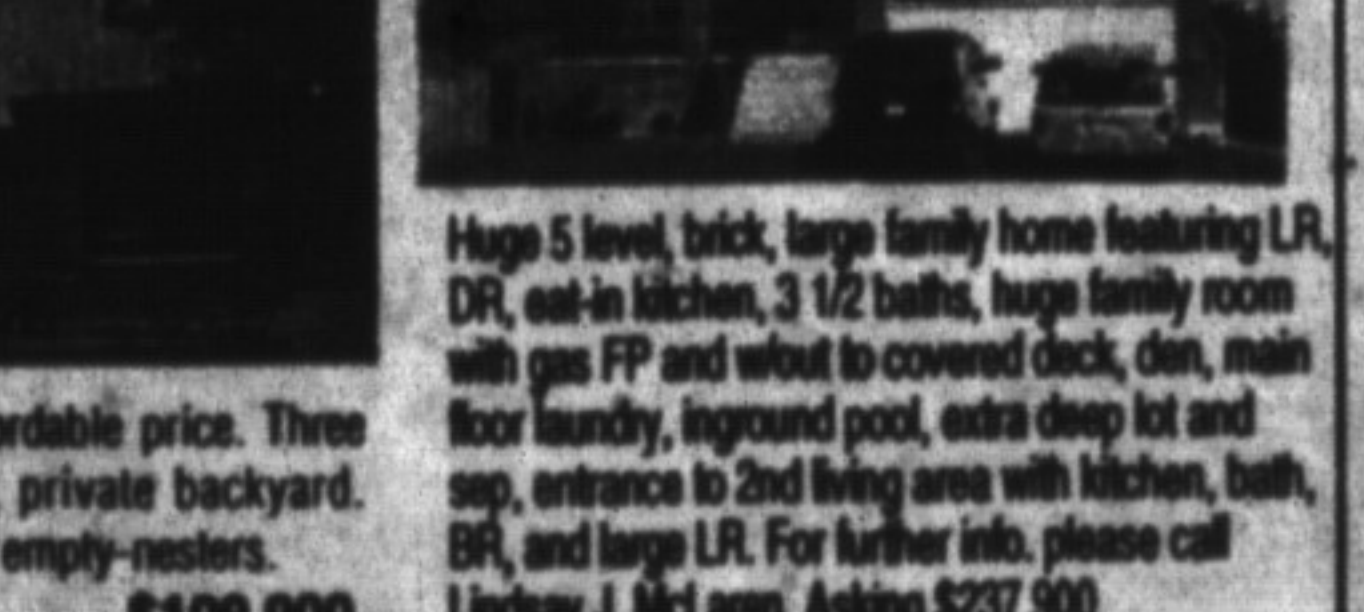
WOODED SECLUSION
 A spectacular wooded lot is the setting for a well built all brick bungalow, located on the beautiful Niagara escarpment. Three plus bedrooms, 2 1/2 bathrooms, large deck off family room and kitchen and a main floor den and balcony. All of this within minutes of town. For further information contact:
 Lindsay J. McLaren ... \$299,900



BRING THE FAMILY
 Add enjoy over 2,000 sq.ft. of comfortable living space in the picturesque village of Campbellville. Spacious living and dining rooms, country style kitchen, convenient main floor family room with fireplace and woodstove to wooden deck. Three plus bedrooms, master bedroom with brick fireplace and ensuite. Central air and vac, plus natural gas availability, make this the perfect family home! When \$329,900
 Lindsay J. McLaren Now \$299,900



WHY PAY RENT?
 Lovely townhome at an affordable price. Three bedrooms, eat-in kitchen, private backyard. Ideal for first-time buyers or empty-nesters.
 Lindsay J. McLaren ... \$109,900



ONE OF A KIND
CENTURY STONE, C'VILLE
 High on a hill with maple tree-lined drive, this 12 acre property with front lawn and open fields, features an immaculately renovated painted limestone with 4 bedrooms, 3 baths, comfortable L.R. & D.R., large country sized lot, M.F. farm rm. with F.P. & walkout, tin. joint. & huge oversized 2 car garage. Ideal for small home farm or country retreat.
 Lindsay J. McLaren \$339,900
TIMBERLEA EXECUTIVE BACK-SPLIT
 Huge 5 level, brick, large family home featuring L.R., DR., eat-in kitchen, 3 1/2 baths, huge family room with gas FP and woodstove covered deck, den, main floor laundry, inground pool, extra deep lot and sep. entrance to 2nd living area with kitchen, bath, BR, and large LR. For further info, please call Lindsay J. McLaren. Asking \$237,900