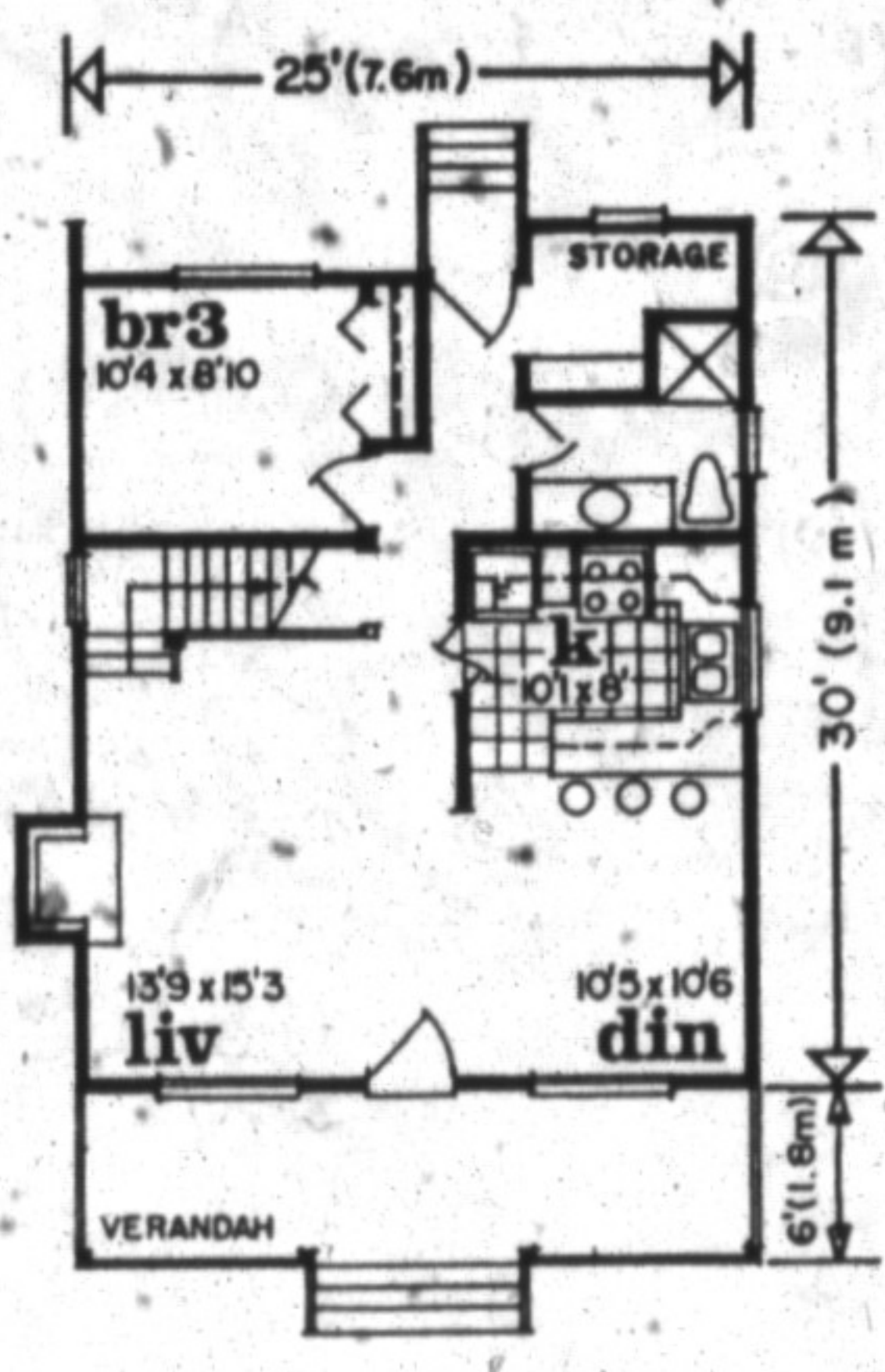
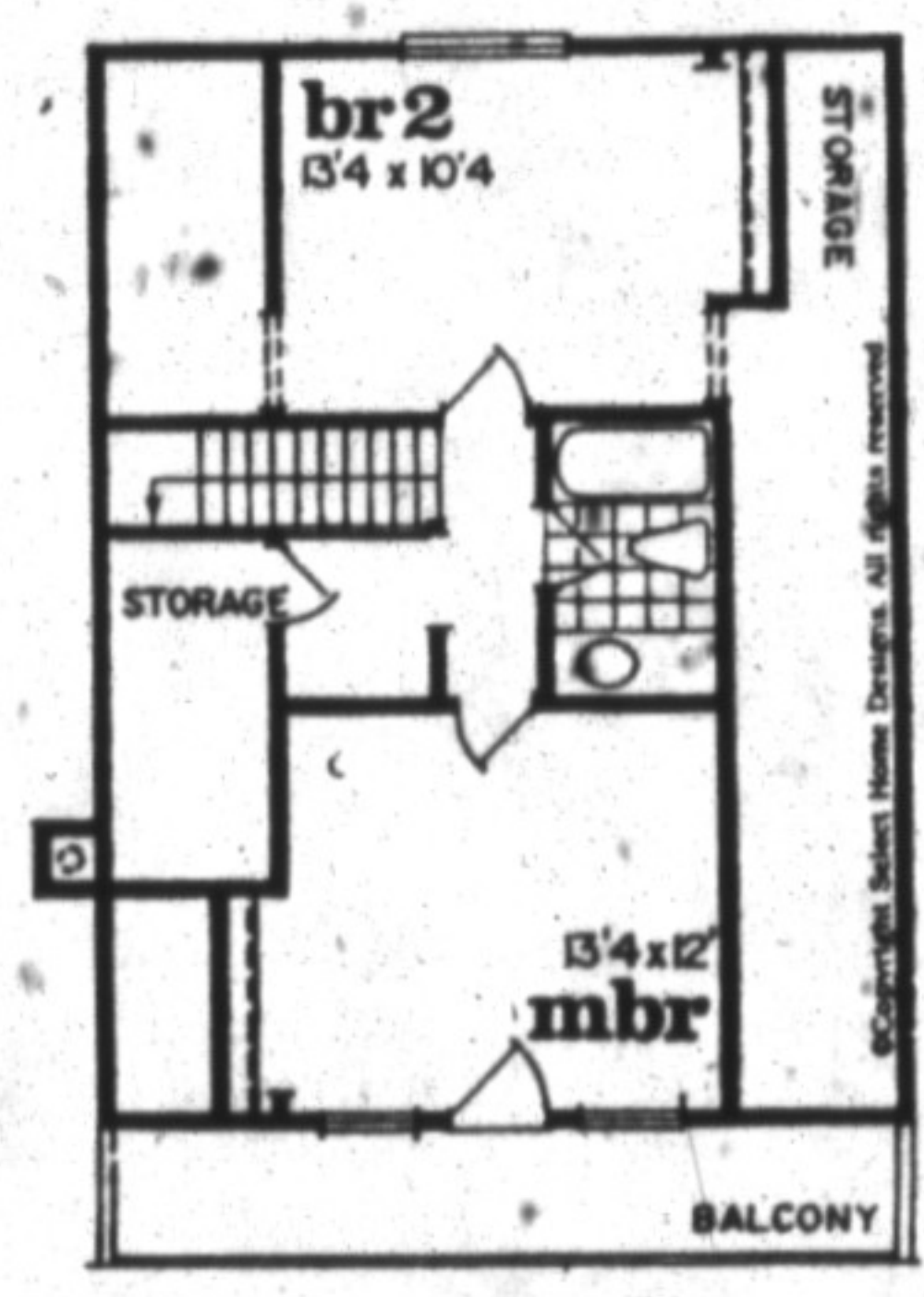




Plan No. 9-1146



first level 725 sq.ft.



second level 607 sq.ft.

Lovely year round retreat

© Copyright
SELECT HOME DESIGNS

- Covered railed verandah opens to the living room with warming fireplace.
- U-shaped kitchen with breakfast bar is open to the dining room.
- Convenient storage / mud room off the back door.
- Master bedroom opens to a front view balcony.

DESIGN for LIVING

• Abundant storage closets throughout.
Send for Canada's largest plan book with more than 500 home plans, including a wide variety of architectural styles from luxurious brick manors to affordable bungalows, only

\$9.95 (including shipping and GST). To order using VISA or MasterCard, call toll-free 1-800-663-6739, fax (604) 251-3212, or send cheque or money order to Design for Living, c/o The Canadian Champion, #301, 611 Alexander Street, Vancouver, B.C., V6A 1E1. Trained consultants are standing by Monday to Saturday to take your order for the plan book, or to provide information about the plan featured in this column.

Tips for getting your house ready for sale

It's almost time for the For Sale sign to go up, and time to make sure your house will be looking its best when the first prospective purchasers walk through the door.

A clean, uncluttered house looks bigger and more inviting, so begin by packing away bulky or unused furniture and making the best use of your space. Be ruthless when you go through closets, spare rooms and cupboards.

If you haven't used that bread-making machine for a while, and if you're not likely to need that extra set of china or cutlery in the next few weeks, pack it away. Those knick-knacks on the mantelpiece may have sentimental value to you, but they'll just look like knick-knacks to the people who come through your home. Take a deep breath and move them out of sight.

You can make a head start on packing by cleaning off bookshelves, clearing clothes, shoes, extra towels and bedding out of closets, and boxing the kids' toys, out-of-season sports equipment and garden tools.

Take a tour of your house and make a note of all those easy-to-miss spots that need a good cleaning. Wash down the walls, windows

and woodwork. Scrub sinks, toilets, bathtubs and kitchen appliances until they shine. Clean out the cupboards under the sink, dust the tops of baseboards and wash all window coverings.

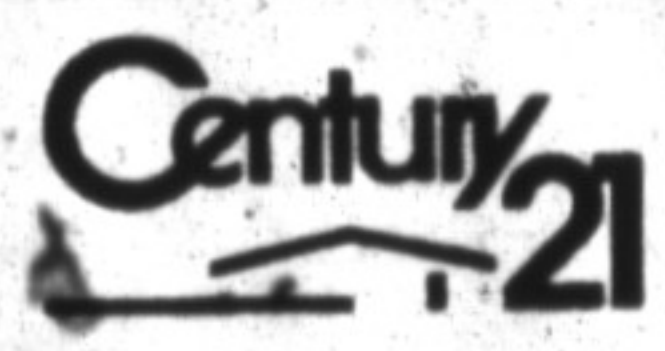
Now is the time to fix the cracked light-switch plates, broken door handles, leaky faucets and squeaky doors you've learned to live with for years.

Shabby kitchen cupboards and a grubby hallway will benefit from a fresh coat of paint in a neutral colour - this is not the time to start experimenting with dramatic paint schemes.

Similarly, heavily patterned wallpaper or brightly coloured accent walls may tend to distract buyers from other features, or make it hard for them to imagine how their belongings will look in the room. If you can, repaint or paper the walls in a subtle colour.

It's often worth replacing carpet or floor coverings that are in really rough shape. If the state of your kitchen floor is lowering the tone of the whole room, for example, inexpensive stick and peel tiles can make a dramatic difference.

Ask yourself if improvements like this will make your home more saleable, and do they justify the cost.

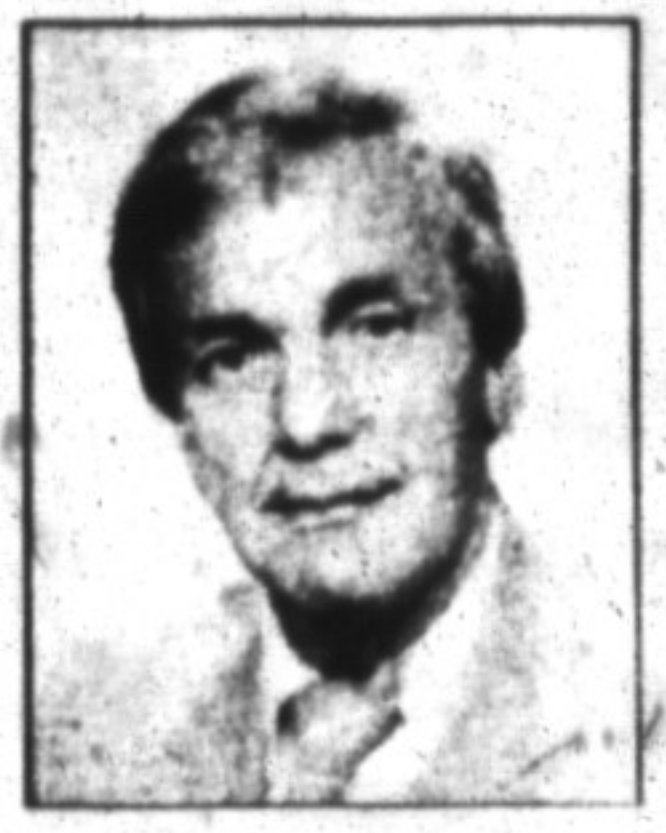


Kingsbury Real Estate Ltd.

ARNOLD SASEK

Sales Rep.

878-1568 or (905) 568-2121



ALL AROUND MILTON ...



KILBRIDE 2-1/4 ACRE \$425,000.

Within walking distance to general store and post office, yet privacy and serene country living assured. An incredible well-built home with stream backing onto conservation lands.



93 ACRE STATE OF THE ART HORSE FARM \$489,000

Minutes from Mohawk Raceway, completely renovated home with inground pool, modern barn with 25 box stalls, arena and a plank fenced paddocks, hayfields, and mature hardwood bush, 3,000 ft. frontage.



ONLY 2 MILES FROM TOWN ON 1.35 ACRES \$234,900

Custom built by present owner this 19 year old home designed by a B.C. architect has a large parklike backyard, with trout stream and borders onto the conservation area. A 24'x48' insulated workshop is suitable for many home industries.



MOST SCENIC 92 ACRE FARM \$599,000

Located between Kilbride & Lowville on the slopes of the escarpment, Mount Nemo on one and Rattlesnake Point on the other side & a view of the Toronto skyline. A spacious well kept century home, barn, workshop & pond rounds out this desirable property.



NEAR "JAMES SNOW PARKWAY" & STEELES \$219,000.

A home in immaculate shape, finished basement with gas fireplace, a complete updated kitchen, ready to move in. This 1/2 acre property is ideal for a trucker, welder or any other industrial use. Ask agent for details.



NEXT TO MAGNA — 11 ACRES \$599,000

Large brick bungalow in excellent condition. A one owner home with barn and 11 acres of industrial (M-2) land. All around this property a draft plan for an industrial subdivision has been approved by the Town of Milton. Great investment. Call agent for details.

LOT IN TOWN

(0.93 Ac.) \$78,000. High and dry on town water, builders. Terms available.