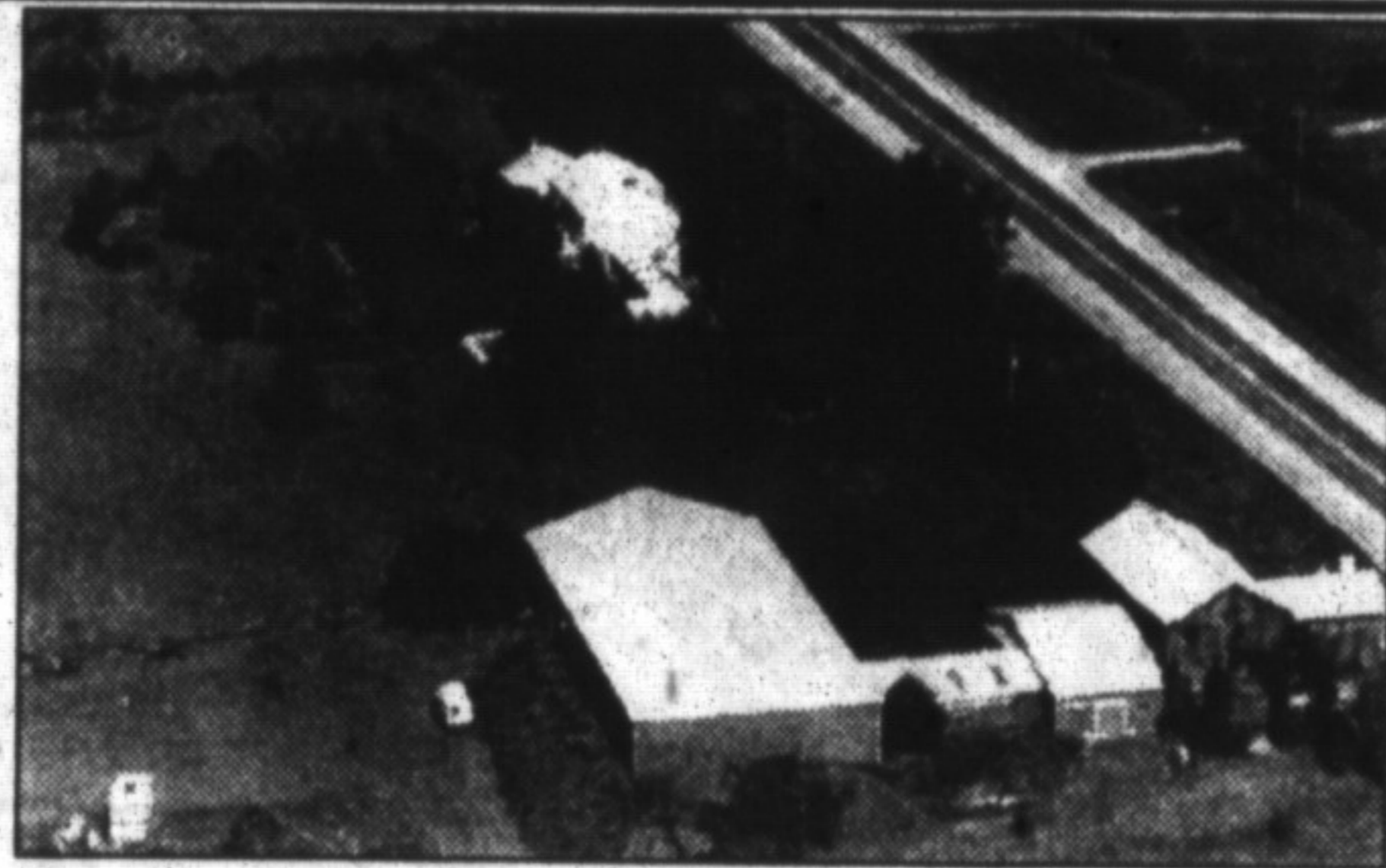


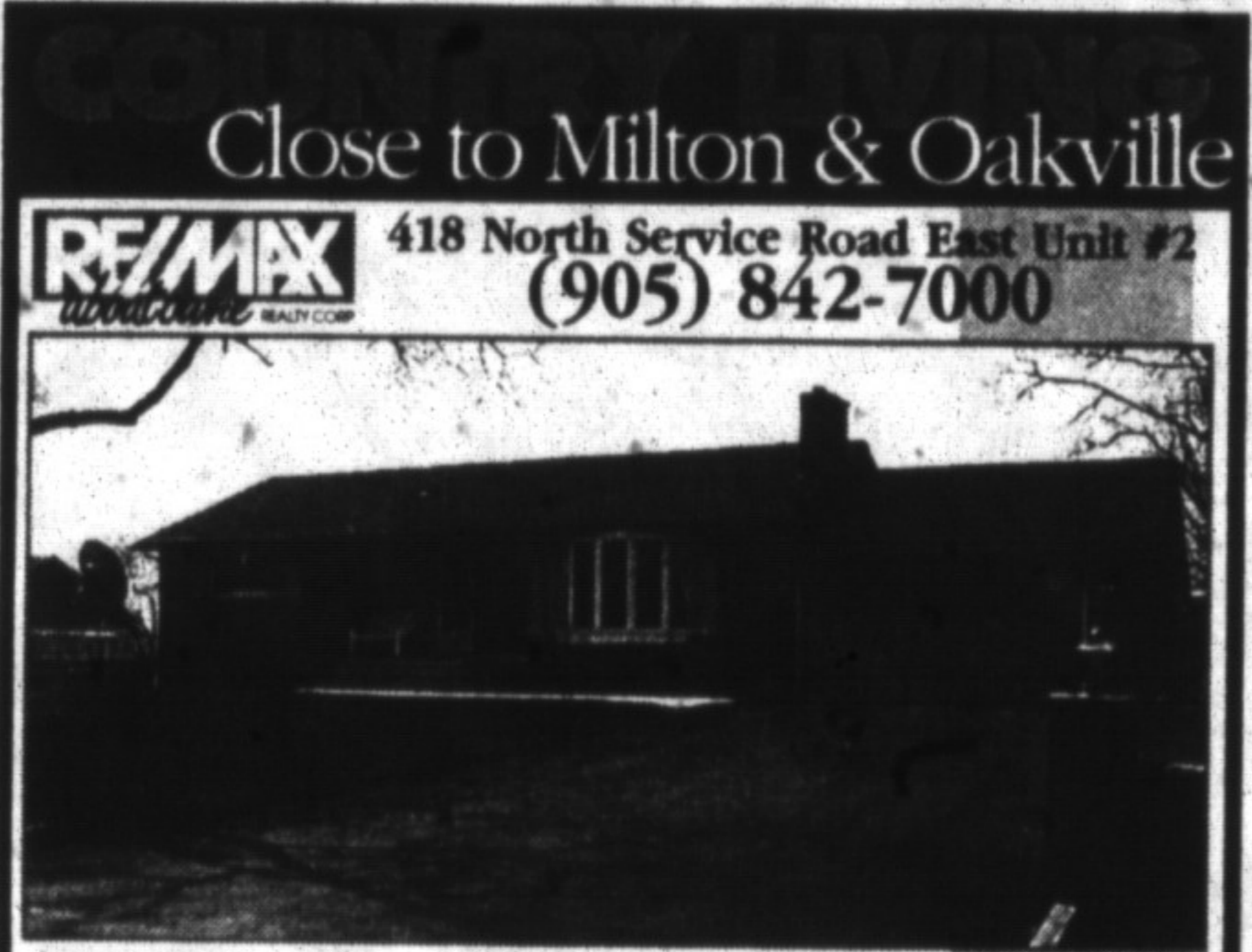
Your Milton
Real Estate
Marketplace

Best Homes



\$525,000 — JUST REDUCED!
Fabulous horse farm, indoor arena (60' x 120'). Stately four bedroom Georgian, totally renovated, main floor family room with fireplace, heated inground pool, double garage. Must be sold! No reasonable offer refused.

ROYAL LEPAGE
CALL **CHERYL SMITH**
Sales Representative
(905) 845-4267.



\$237,900. Beautiful renovated bungalow on half acre lot. Updated white kitchen. All windows replaced. Stone fireplace. Walkout from dining room and master bedrooms, 2 baths. In-law potential. Double garage. Above ground pool.

Carolyn Lofquist, Associate Broker
(905) 842-7000



**MS
FACT
#1**

Canada has one of the highest rates of multiple sclerosis in the world.

**Multiple Sclerosis
Society of Canada**
1-800-268-7582

ROYAL LEPAGE

Royal LePage Real Estate Services Ltd

388 Main St. E.

878-8101



**PETRA
SCHWABE *BA**
Sales Representative
878-8101



LOCATION. LOCATION. LOCATION
Attractive custom built raised bungalow conveniently located near Trafalgar Road & Hwy. 401. Spacious principal rooms, nicely finished lower level with F.P., 1+ acres. \$259,000.



10 ACRES + POND
Spacious 12 room sidesplit conveniently located just north of Milton. 4 bedrooms, family room with woodstove, in-law suite potential. Gorgeous property with small barn. \$279,900.



BROOKVILLE ESTATES
\$324,500. One of the nicest properties in the area offering fabulous views of the surrounding countryside. Custom built 2-storey, 4 bedroom home, large inlaw apt. with walkout, inground pool.



COUNTRY EXECUTIVE HOME
Beautiful Cape Cod custom-built in 1994. Centre hall plan features gorgeous kit./family room, formal D.R., main floor den, inlaw suite over garage, 1/2 acres N. of C'ville. \$395,000



CAMPBELLVILLE
Century home with much of its original character awaits your personal touch. Currently used as a triplex with 3 spacious apts. and separate 600 sq. ft. commercial building. Excellent financing available. \$249,000.



JOHN WEIDE
ASSOCIATE BROKER

COLDWELL BANKER **PINNACLE REAL ESTATE**

Expect the best* Serving Oakville & Surrounding Area

Your **"HALTON, MILTON
OAKVILLE CONNECTION"**
905-338-5400



10 ACRES, WOODS, RAVINE
Excellent retreat in ground swimming pool, 5 bedrooms, large kitchen with fireplace. On Fifth Line, just north of 401.
\$689,900



MILTON ESTATE 2.5 ACRES!
Just outside of town on woodclose, beautifully appointed home, 5 bedrooms, 5 fireplaces, 5 baths, move right in. Nothing to do! **\$699,900**



CAMPBELLVILLE, COOL POOL
3 bedroom raised Tudor ranch in popular Campbellville. Nicely decorated, recent upgrades, family room with brick fireplace, tiered lot, lots of trees. Inground swimming pool and private patio. **\$249,900**



MILLION-DOLLAR VIEW
Country, close to Milton, upgraded 3 BR country home, pleasant decor, large lot 107' x 204' rec. rm with woodstove, opposite horse farm and view of Escarpment. **\$196,900.**



"LOST PARADISE" FOUND IN HALTON HILLS
A beautiful Escarpment vista, open floor plan, vaulted ceilings, floor to ceiling fireplace. Large picture window overlooking conservation lands, ravine, hills, valleys, majestic trees, nature at its best! A view for all seasons situated on 3+ acres. Close to Georgetown. Investigate! **\$399,900**



LOWVILLE
Large sprawling ranch, approx. 2400 sq.ft., 3 bedrooms, dining, family and sunroom, office and separate workshop, all on one acre. Check it out! **\$224,900**



MILTON HEIGHTS
Large family home with many rooms, presently used as duplex. Asking only **\$179,900**.

WANTED:

- Urgent! Old Milton, Victorian-style home up to **\$325,000** Fast closing!
- Country. Modern up to **\$600,000**
- Country. 25 acres+ home up to **\$850,000**
- Milton detached homes **\$150,000 - \$175,000**
- Home plus/10 acres. Kilbride Area. Up to **\$350,000**

Want to Sell??
Call **JOHN WEIDE* 338-5400**
Expect the best*