

# HUNT

## SPECIAL EVENT

WE WILL NOT BE UNDERSOLD\*

WE WILL NOT BE UNDERSOLD\*

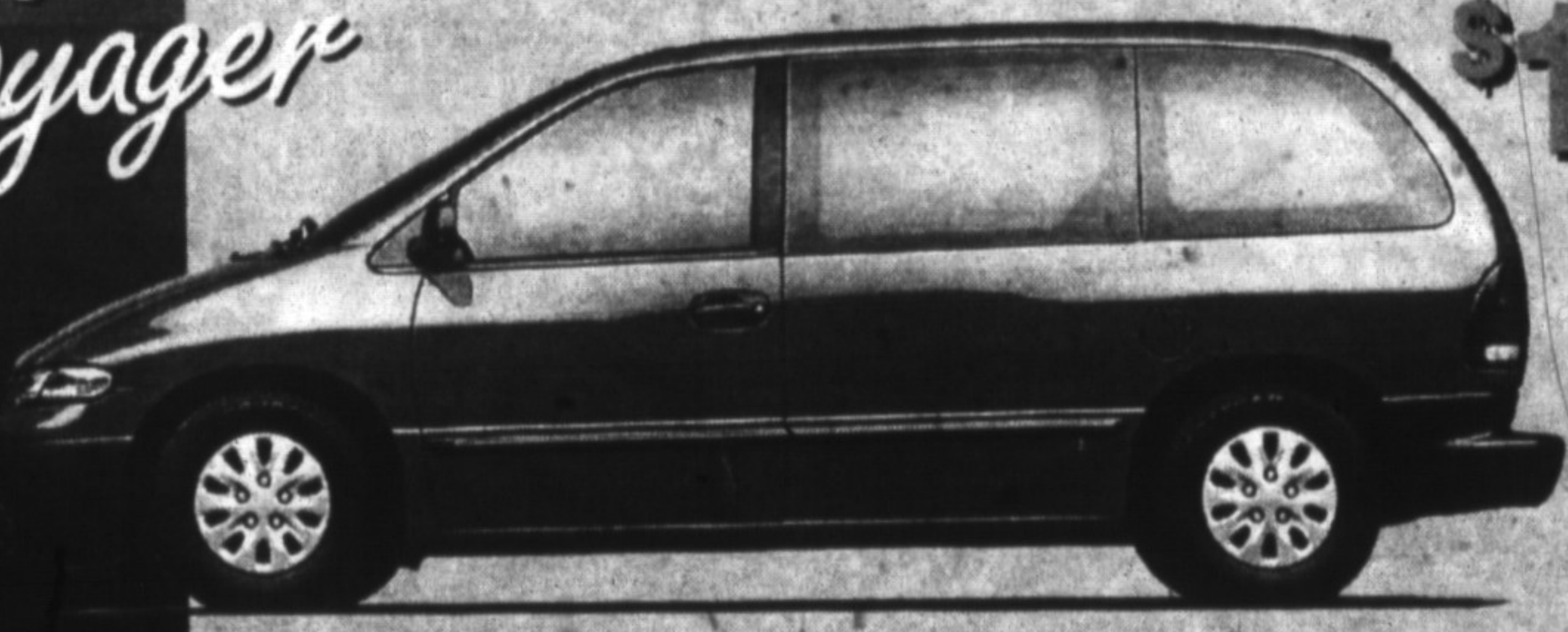
WE WILL NOT BE UNDERSOLD\*

WE WILL NOT BE UNDERSOLD\*

# HOT Wheels COOL Deals

NEW FOR '96  
*Plymouth Voyager*

Featuring:  
Dual air bags, clearcoat,  
3 litre V6, automatic, A/C,  
7 passenger seating, roof rack,  
light package, storage drawer,  
dual electric horns, silencer pad -  
rear floor, rear wiper/washer, elec.  
rear window defroster, AM/FM stereo  
with four speakers and much more.



*Sale Price*  
**\$19,988**  
SAVE ON YOUR  
MONTHLY PAYMENTS.  
ASK ABOUT  
CHRYSLER'S  
GOLD KEY  
PROGRAM

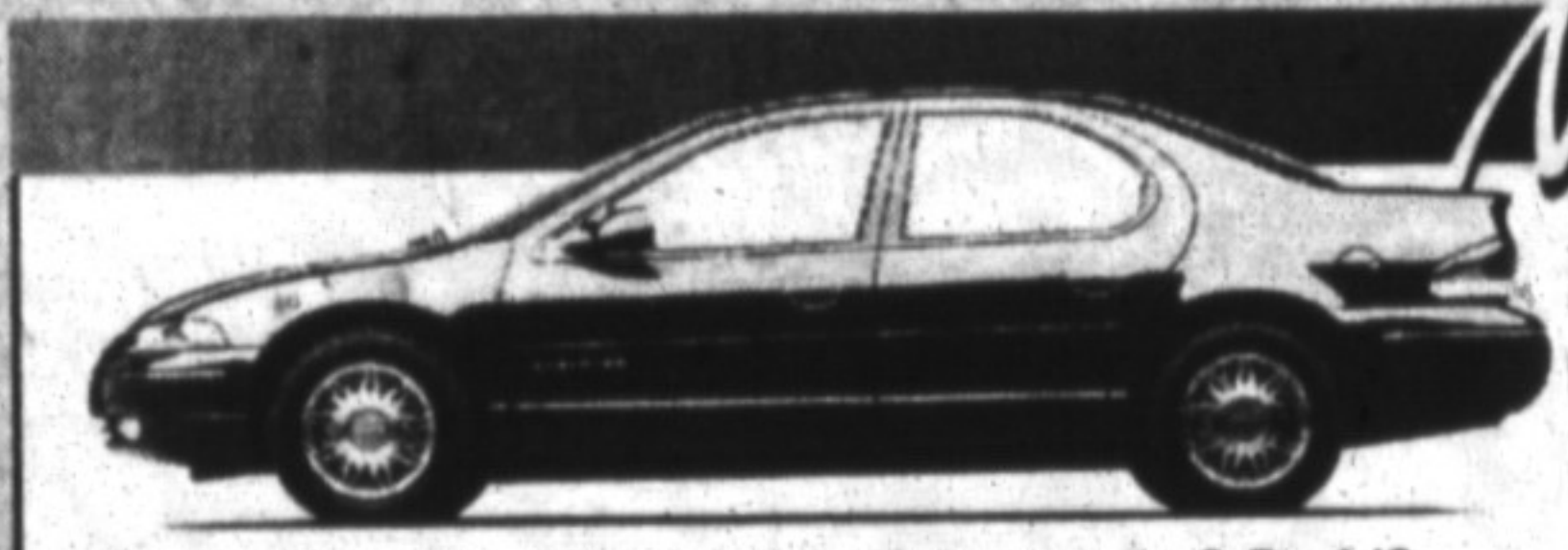
Win a Trip for 2 to the  
'96 Olympics in Atlanta...  
A Home Computer  
System...  
or a **BRAND NEW CAR!**  
(see dealer for details)



*New!* 1996  
**Chrysler  
Intrepid**  
SALE PRICE\*\*  
**\$20,288\***

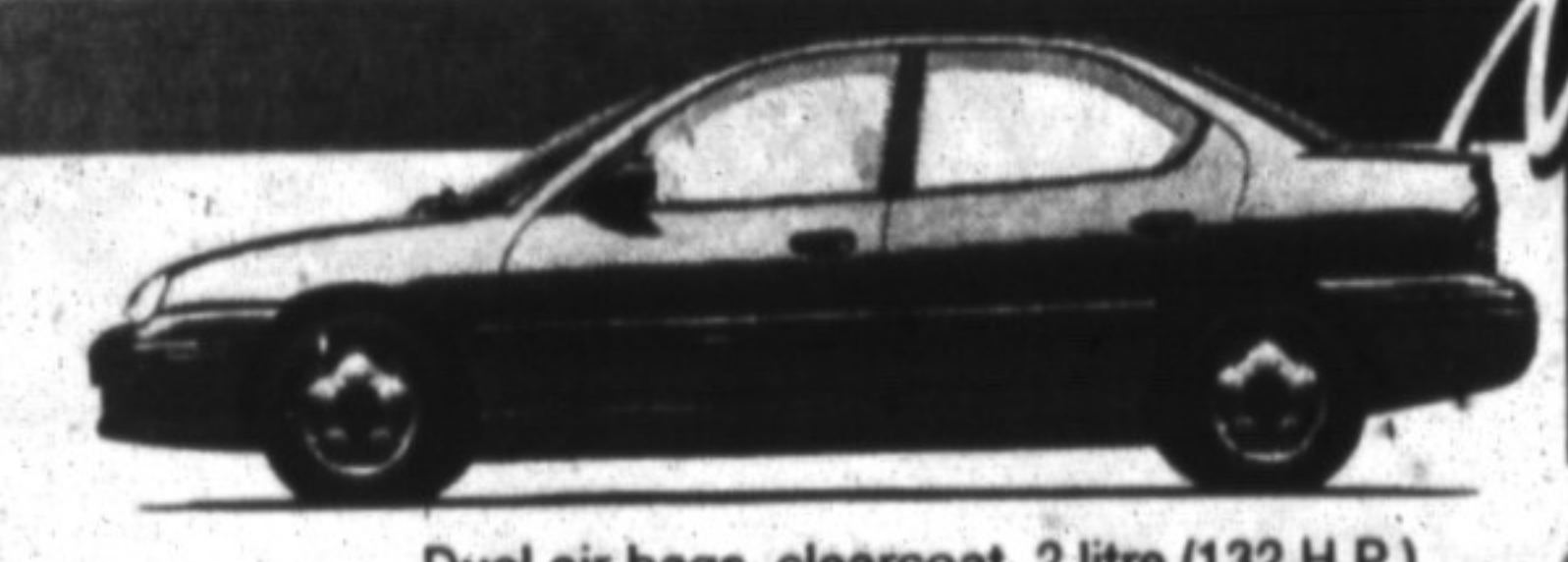
Dual air bags, clearcoat, 3.3 litre V6,  
automatic O.D., A/C, tilt, cruise, p.w., p.d.l.,  
p.m., p.t., AM/FM stereo w/cassette w/6 speakers

CHRYSLER  
**FIVE STAR SERVICE**  
★★★★★  
driving home excellence



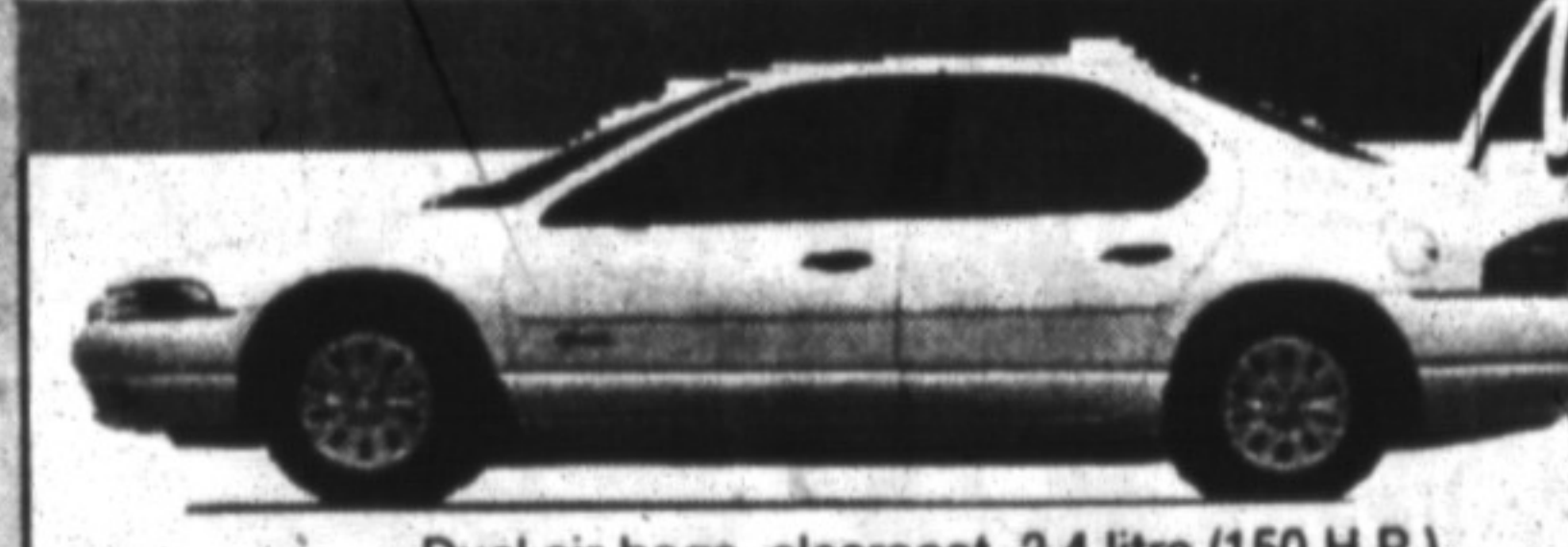
*New!* 1996  
**Chrysler  
Cirrus "LX"**  
SALE PRICE\*\*  
**\$21,288\***

Dual air bags, clearcoat, 2.5 litre V6, automatic O.D., A/C,  
ABS, tilt, cruise, p.w., p.d.l., p.m., keyless entry, AM/FM  
stereo w/cassette w/4 speakers and much more.



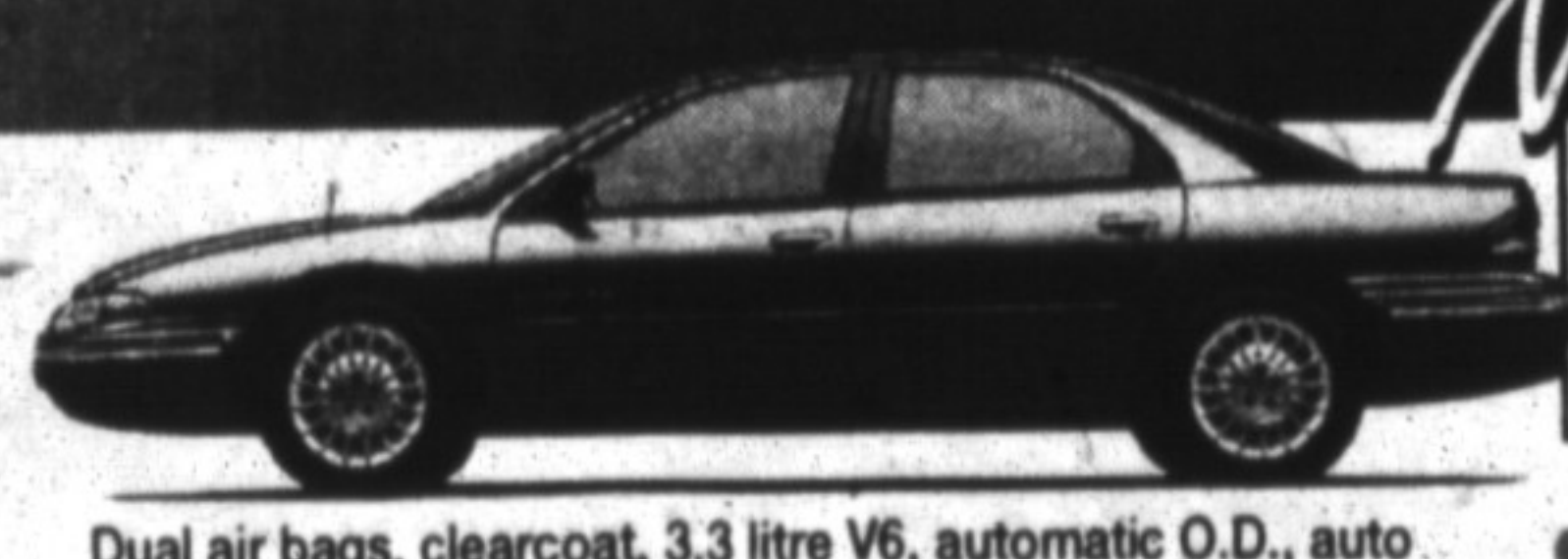
*New!* 1996  
**Plymouth Neon  
4 Dr. Highline**  
SALE PRICE\*\*  
**\$13,998\***

Dual air bags, clearcoat, 2 litre (132 H.P.)  
4 cyl., A/C, automatic, AM/FM stereo  
w/4 speakers and much more.



*New!* 1996  
**Plymouth  
Breeze**  
SALE PRICE\*\*  
**\$17,988\***

Dual air bags, clearcoat, 2.4 litre (150 H.P.)  
4 cyl, automatic O.D., A/C, tilt, cruise, AM/FM  
stereo cassette w/4 speakers and more.



*New!* 1996  
**Chrysler  
Concorde "LX"**  
SALE PRICE\*\*  
**\$24,288\***

Dual air bags, clearcoat, 3.3 litre V6, automatic O.D., auto  
temp., ABS, tilt, cruise, p.w., p.d.l., p.m., p.t., p.d.s., keyless  
entry, premium AM/FM stereo cassette w/6 speakers.

\*PLUS FREIGHT, TAXES, LICENCE & GAS. \*\*CHRYSLER REBATES WHERE APPLICABLE ARE ASSIGNED TO DEALER, HAVE BEEN APPLIED TO SALE PRICES AND ARE TAXABLE.  
VEHICLES MAY NOT BE EXACTLY AS ILLUSTRATED. FACTORY ORDER OR DEALER LOCATE MAY BE NECESSARY. SEE DEALER FOR COMPLETE DETAILS.

**We invite you to come and see our award winning dealership.**



Treat yourself to our  
**"Total Customer Delight"**  
on all our new and used vehicles.

# HUNT

PLYMOUTH CHRYSLER

**500 BRONTE ST., MILTON**  
**876-2580**

PROUD  
SUPPORTERS  
OF LOCAL  
ORGANIZED  
SPORTS

OUR AWARD WINNING SALES STAFF

GARY HUNT PRESIDENT	TODD LANDRY SALESMAN
AL MacGREGOR SALESMAN	JOHN PINNEY SALESMAN
SCOTT OSBOURNE SALESMAN	FRANK COLLETTI SALESMAN

**GOLD KEY LEASE**  
#1 Gold Key Lease  
Dealership in Canada  
in Our Category!

WE WILL NOT BE UNDERSOLD\*

WE WILL NOT BE UNDERSOLD\*