

# RE/MAX

MILTOWNE REALTY CORPORATION  
INDEPENDENTLY OWNED AND OPERATED

## Going Above and Beyond For YOU!

#1 IN MILTON REAL ESTATE SALES & TRANSACTIONS

22 Ontario St. S.

E-mail address  
miltowne@globalseve.ca

878-7777



**LINDSAY J. McLAREN**  
Sales Representative  
878-7777 Office  
(Res.) 854-2451 (Tor. Line) 825-4485

Call Lindsay  
to find out how you  
can participate  
in the  
Spring Market!

**NESTLED IN THE TREES**

Enjoy over 2,000 sq. ft. of comfortable living space in the picturesque village of Campbellville. Spacious living and dining rooms, country pine kitchen, convenient main floor family room with fireplace and walkout to wooden deck. Three plus bedrooms, master bedroom with brick fireplace and ensuite. Central air and vac. plus natural gas availability, make this the perfect family home!  
Lindsay J. McLaren... Was \$329,900  
Reduced... NOW \$309,900

**ONE OF A KIND**

A unique custom built home in popular Campbellville Country Meadows. This well built home features an open cathedral ceiling, gas fireplace in the spacious living room, separate dining room and large oak kitchen with built in appliances. The vaulted ceiling family room opens to the kitchen, has a fireplace and walkout to deck. A huge master bedroom with 6 piece ensuite, jacuzzi and private deck. 3 other bedrooms, central air and vac, natural gas availability. 1.5 acre lot at the end of a quiet court, all make this a home to be seen!  
Lindsay J. McLaren... Asking \$399,900

**STATELY COLONIAL**

On acre lot on Crawford Cres. features large LR DR with hardwood floors, hollywood style greenhouse kitchen with built appliances. Huge master bedroom w/ fireplace, main floor laundry room, 2 hall bns, hot gas heat, C/A, C/Vac, large deck & h...  
Lindsay J. McLaren... Asking \$399,900

**JOSEPH FEDACSEK**  
Associate Broker  
878-7777



**YEAR ROUND ENJOYMENT**  
in this 5 bedroom country home, with indoor swimming pool, with nature walks and ski trails on 8.7 acres of privacy. Just minutes from town. \$599,000. Call Joseph

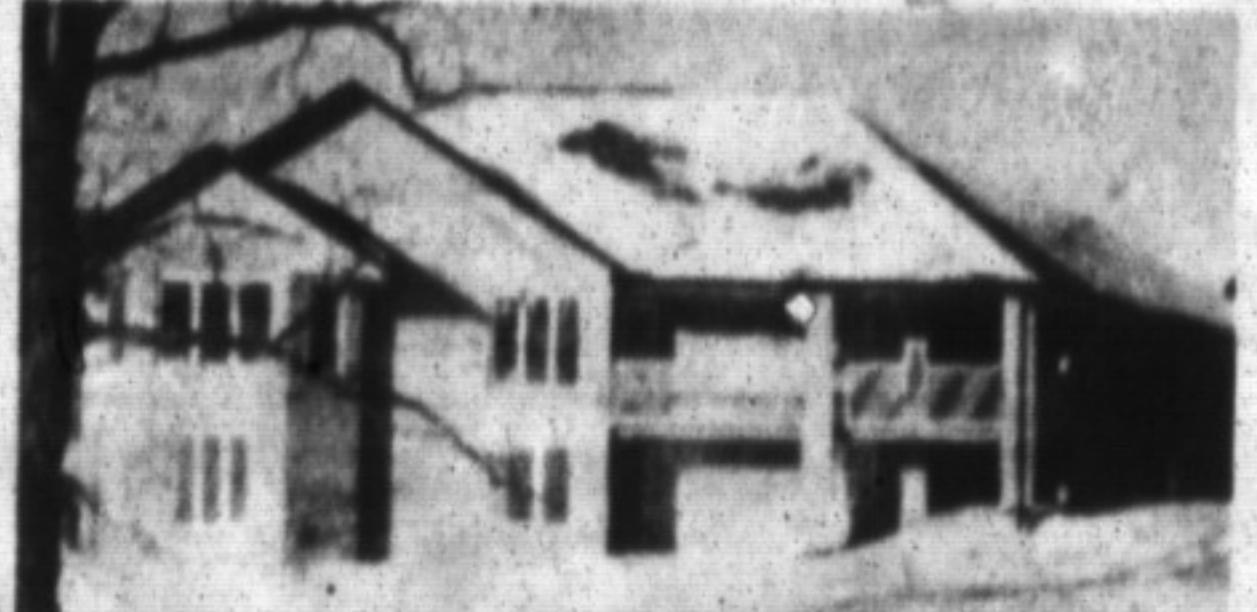
**SERENITY IN THE WOODS**

A spectacular wooded lot is the setting for a well built all brick bungalow, located on the beautiful Niagara escarpment. Three plus bedrooms, 2 1/2 bathrooms, large deck off family room and kitchen and a main floor den and balcony. All of this within minutes of town. For further information contact:  
Lindsay J. McLaren. Asking \$299,900

**MAIN ST. COMMERCIAL**

Ideal location at Main & James St., with 1150 sq. ft. of commercial space with bsmt. and 1 bedroom apt. upstairs. Building has been renovated & updated and is in good condition. For further information contact Lindsay J. McLaren. Value priced at \$179,900

**FLORENCE WALTER**  
Sales Representative  
878-7777 Office  
878-0231 Res.  
825-4485 Tor. Line



**ANYTHING BUT ORDINARY**  
Brand new bungalow, 3 bedrooms, great room with cathedral ceiling, dream kitchen. Optional 1500 sq. ft. in-law suite. Set on two rural acres, now asking \$329,000. Call me to view this unique property.

**Lloyd Moore**  
Sales Representative  
Office: 878-7777 Res.: (519)853-3158

**\$319,900.**  
**SPRING INTO COUNTRY** new 3 1/2 year old custom built 4 bedroom home on 1 acre treed lot with private 2 bdrm. in-law suite. Close to town on paved road, cable TV. Quality throughout. Call Lloyd Moore.

*Citizen of the Year*

Betty Ingle

*Congratulations Betty from all of your colleagues at Re/max. It's a pleasure, working with someone who cares so much about Milton and gives so much back to the community.*

Don't wait.  
Call RE/MAX first.  
Milton's #1 Choice

**RON FURIK**  
Sales Representative  
Office 878-7777  
Res. 878-3337  
Tor. Line 825-4485



**WHY PAY RENT MORE FOR LESS**  
When you can carry the monthly payments for less. Features U/G Hardwood floor, central air, finished basement & walkout to yard. Asking \$116,900 Call Ron today.  
Best describes this great 4/5 bedroom family home. Features family room with F.P., main floor laundry, mud room & back door access to yard. LR & DR hardwood floors. Asking \$179,900.

**WANTED**

- Executive style home in Timberlea/Bronte
- Detached homes \$160,000-\$175,000.
- In/out of town bungalow.

**ANNE TAYLOR**  
Associate Broker  
Town & Country  
REGISTERED RELOCATION SPECIALIST  
854-9833  
Tor.: 825-4485  
Pager: 878-7777

**TIMBERLEA FOUR BEDROOM**  
\$159,900



Four bedroom semi on fenced corner lot has the feel of a detached home. Living room has fireplace and walk-out, bay windows in dining room and kitchen, unpolished basement level for your finishing touch.

**GEORGETOWN SEMI**  
\$144,900

First time offered. Immaculate semi on edge of Town and close to Credit River in move-in condition, fenced yard, huge eat-in kitchen and basement ready for you to finish

**TOWN & COUNTRY**  
\$239,900



Have the best of both worlds. Upgraded home on almost an acre just outside town offers new windows, gas furnace, Florida room with hot tub, pool and quiet agricultural views. Bruce trail at your door. Just move right in and enjoy.

**IN THE VILLAGE**  
\$284,900

Upgraded family home in one of Campbellville's most popular subdivisions. Large wooded lot just steps to village shops. Master bedroom suite with fireplace, huge family room, separate living/dining rooms. A lifestyle you would want for your growing family.

**LOADED WITH EXTRAS**  
\$249,900



On almost an acre right in Millal Village, bright immaculate contemporary home offers four bedrooms, family room with cathedral ceilings and fireplace, eat-in kitchen with walk-out to large deck. Backs onto agriculture and definitely won't last!

**NEW LISTING**

Gorgeous raised ranch bungalow, fabulous kitchen with centre island, let the sunshine in the rear sunroom. 4 large bedrooms, huge living room & dining room, finished lower level with 900+ sq. ft. in-law apartment. All on over 2 acres of escarpment land. \$369,000. Must to see.

**GORGEOUS VIEWS**

Gorgeous 1300 sq. ft. Oban mfo:el, 2 bedrooms, 2 bathrooms, large sunroom/breakfast room, faces south and overlooks escarpment and Mill pond. Ready to move into. \$166,900.

**COME SEE, COME SIGH**

Located in Puslinch on 2.5 gorgeous acres the home is ideally suited for a small business or someone who likes a lot of space - 4 bedrooms, separate living and dining rooms, main floor family room/den, sunroom, games room/office. Asking \$368,000

**MOVE IN LIKE LAND**

Many upgrades flooring, some windows, insulation, front doors, and more. 3 bedrooms, open plan living room and dining room & flexible closing. \$119,900.

Completely remodeled this gorgeous side split offers main floor den and family room, walk out rec. room and games room. 3+ bedrooms, formal living and dining rooms, large 2 car garage and nearly 10 acres. \$319,900. A must to see in this range.

**JOHN (JP) PEARS**  
Sales Rep  
Office 878-7777  
Res. 878-6859  
Tor. Line 825-4485

**RE/MAX MILTOWNE REALTY CORP.**  
Demand the Very Best!